

Installation Manual

Product

**Rally Mud Flaps
VSCR-A025**



Fitment

2022+ WRX

BEFORE YOU START

Suggested Tools

- Factory Service Manual
- Pick Tool
- Phillips Screwdriver
- Standard Flat Head Screwdriver
- 3/8" Ratchet
- 4mm Allen key socket
- 10mm wrench
- 19mm Socket (Lug Nuts)
- Torque Wrench
- Floor Jack
- Jack stands
- Anti-Seize

What's Included

Front Flap Set

- RH & LH Front Mud Flaps
- RH & LH Front Brackets
- 8x M6x1 Barrel Clips
- 2x M6x1x16 Hex Head Screws
- 2x M6x1x20 Hex Head Screws
- 4x M6x1x30 Hex Head Screws
- 2x M6x1 Nylon Insert Lock Nut
- 10x M6 Washers
- 4x M6x4 Stainless Steel Spacer

Rear Flap Set

- RH & LH Rear Mud Flaps
- RH & LH Rear Brackets
- 4x M6x1 Barrel Clips
- 4x M6x1x20 Hex Head Screws
- 2x M6x1x30 Hex Head Screws
- 2x M6x1 Nylon Insert Lock Nut
- 8x M6 Washers
- M6x12 Stainless Steel Spacer



CAUTION: NOTES BEFORE STARTING

This document uses a 2022 WRX for the installation process.
Your experience may differ slightly depending on year and model.

Make sure you have all necessary tools before beginning installation. We recommend taking your vehicle to an appropriate shop for the installation of this part if anything in this process is outside of your experience.

Take care when choosing a car wash after installing mud flaps. Hand washing is recommended, as brushes from automatic car washes may cause damage.

Please reference your **Factory Service Manual** for specific part removal instructions on your specific vehicle.

Factory Service Manuals can be purchased at:

<https://techinfo.subaru.com/>

SAFETY CHECK

Always make sure the vehicle is adequately supported on ramps, jack stands, or a lift.

Warning: Never work under a vehicle supported only by a floor jack!

PART 01

Preparing for Installation

1. Lift car off ground and secure appropriately
2. Remove wheels from vehicle and set aside

PART 02

Installing Front Mud Flaps

Note: Photos show installation of LH side mud flaps

1. Remove three (3) visible clips using a Phillips screwdriver to release the center portion of the clip ([REFERENCE 01](#))



REFERENCE 02



Location and position of mounting bracket

2. Pull back wheel arch liner to expose lower mount point for front bracket ([REFERENCE 02](#))
3. Install the front bracket
 - Align to metal tab and attach using M6x16 screw with a flat washer on either side and secured with M6x1 nut
 - Make sure that the welded nut aligns with the hole on the plastic skirt

PART 02 CONTINUED

4. Add 2x barrel nuts to two tabs making sure barrel is on the inside of the tab ([REFERENCE 03](#))
5. Replace the wheel arch liner making sure it tucks underneath the fender
6. Install mud flap ([REFERENCE 04](#))
 - Install each screw loosely to adjust positioning of the flap – a pick tool can be helpful to align the barrel nut with the screw - Use of anti-seize recommended for salty/corrosive environments
 - Top mount uses M6x30 screw with flat washer and 4mm spacer
 - Bottom outer mount – use M6x25 screw with flat washer
 - Bottom inner mount – use M6x30 screw with flat washer and 4mm spacer
7. Repeat steps 1-6 to install the mud flap on the opposite side
8. Reinstall wheels and make sure lugs have been set to the appropriate torque

REFERENCE 03



REFERENCE 04

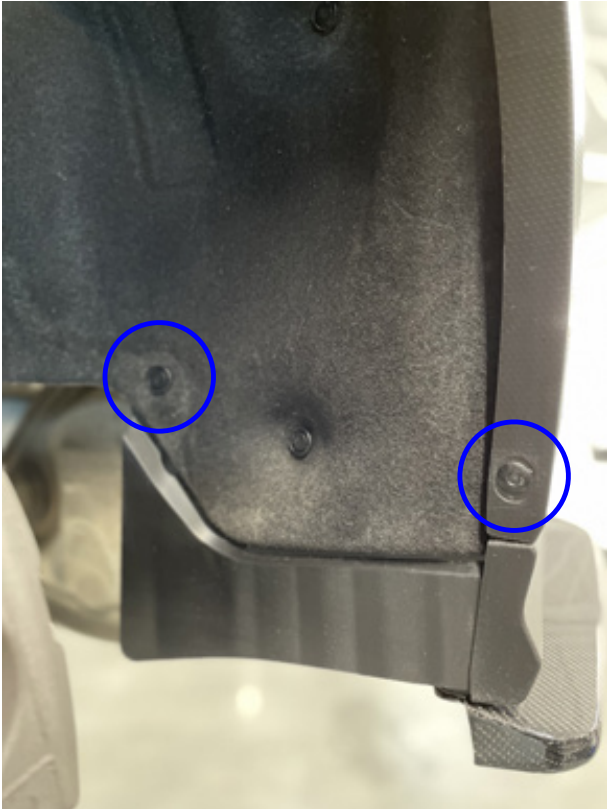


Rear Mud Flap Installation

1. Remove two (2) visible clips using a pick tool or flathead screwdriver ([REFERENCE 05](#))
2. Prepare rear bracket by positioning one barrel nut clip on the top part of the bracket ([REFERENCE 06](#))

Note: Make sure the arc in the bracket matches the wheel arch

REFERENCE 05



REFERENCE 06



PART 03 CONTINUED

3. Position the bracket between the liner and the painted bumper
4. Place a barrel clip over bottom hole making sure to capture the painted bumper with the bracket ([REFERENCE 07](#))

Note: The clip may need to be opened slightly for this step for ease of installation

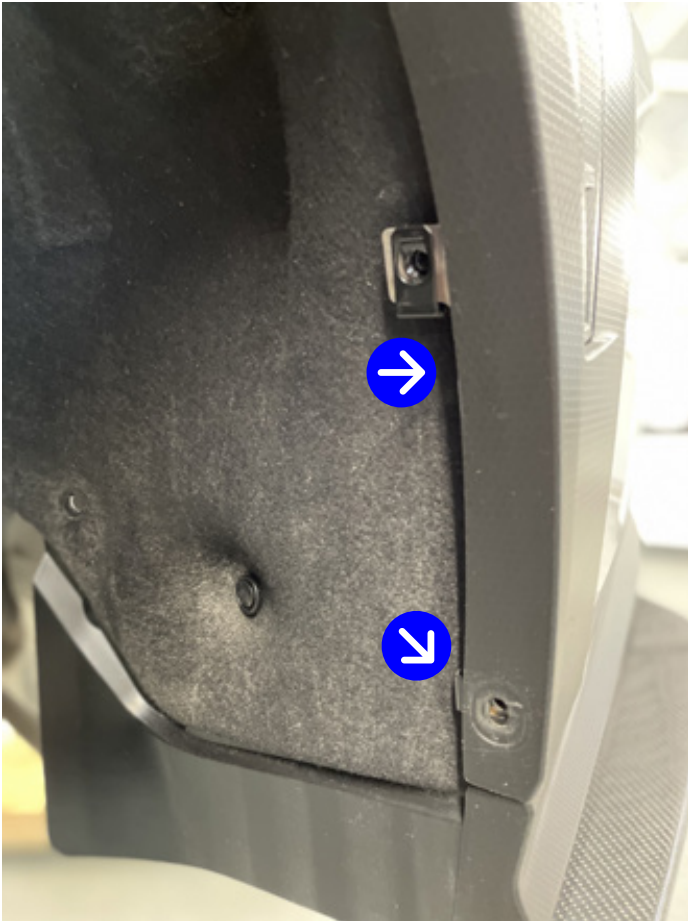
Note: a pick tool can be helpful to align the barrel nut to the hole

5. Mud flaps are now ready to install

Note: Secure all hardware so that it is tight but does not drastically deform the flap

Note: Use of anti-seize recommended for salty/corrosive environments

REFERENCE 07

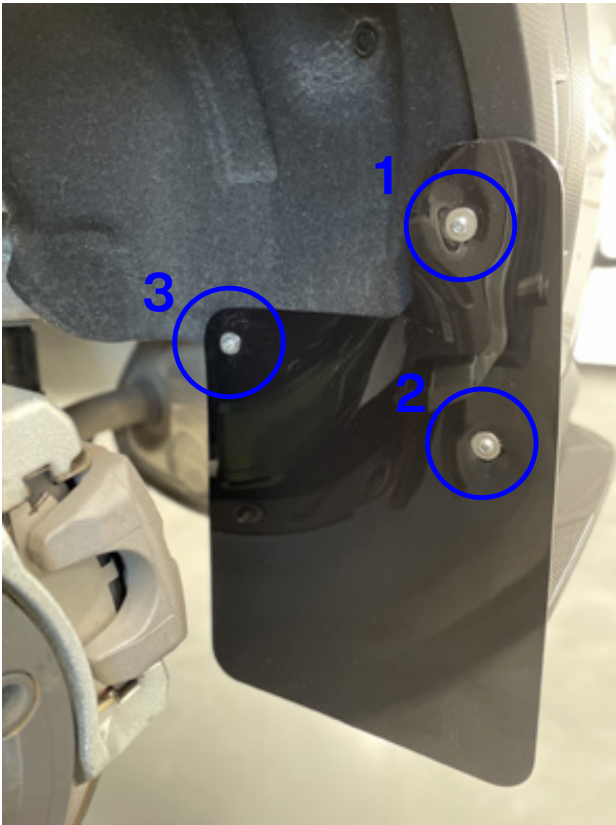


Ensure the barrel clip is secured to the painted bumper beneath plastic fender

PART 03 CONTINUED

6. Use M6x25 screw and flat washer for the top mount to the bracket ([REFERENCE 08](#))
7. Use M6x25 screw and flat washer for the bottom mount to the bracket ([REFERENCE 08](#))
8. The innermost mount will be secured on the opposite side with the provided M6x1 locking nut and washer ([REFERENCE 08](#))
 - Use the M6x30 screw with flat washer
9. On back of mud flap position the 12mm spacer and align screw through spacer and into hole – on opposite side secure with flat washer and M6x1 locking nut ([REFERENCE 9](#))
10. Repeat steps 1-9 to install the mud flap on the opposite side
11. Reinstall wheels and make sure lugs have been set to the appropriate torque
12. Safely lower vehicle

REFERENCE 08



REFERENCE 09





If you have questions or need help with your install or parts questions, please reach out to us:

Email: support@vtcar.com | **Phone:** 802.655.3533

Prior to the installation and/or use of any of products contained herein, whether purchased from or provided by Lance Smith Inc., d/b/a Vermont SportsCar (“VSC”), please read and understand both the installation instructions and these Warning and Safety Rules.

Failure to read, and strictly adhere to both the installation instructions and this Warning and Safety Rules may result in damage to personal property, serious personal injury, and/or death.

Keep all products out of the reach of children, and if children are around the products, always have an adult present.

Follow all instructions regarding the installation and use of all products.

Do not disassemble, modify, or attempt to repair any products for any reason. If damaged or in need of service, please contact VSC at the phone number or email address below.

Do not use products in any manner which has not been approved by VSC, or in connection with any third-party products, unless each has been approved by VSC prior to such use.

Do not install or use products on vehicles which have not been approved by VSC, as stated at www.vtcar.com (the “Website”).

Prior to installation, always store products in a dry and clean location.

Do not strike, hit, crush, shock, drop, pierce or otherwise physically abuse products. Make sure products are located in a place in which they will not be tripped over, damaged, cut or scratched. Do not install or use any product if it appears to be damaged or defective, instead call or email VSC at the phone number or email address below.

Immediately discontinue use of the products in the event they become damaged, deformed, destroyed, or altered in any way due to force or contact.

In the event you become injured during installation or use of products seek immediate medical attention.

If you are for any reason unable or unwilling to follow these instructions, or to comply with the terms above as applicable, please contact VSC at (802)891-6815 or at store@vtcar.com

Your installation or use of the products will constitute your acknowledgement that you have read the above. Keep this Warning and Safety Rules for your records so that you may return to them as needed.



The Undisputed Destination for Fast.

vtcar.com