

TOP SHELF RARE PARTS

Wide-Angle Lens Install

2008-2014 Wrx/ STi

Tools needed:

Plastic trim remover/Plastic knife

3M Double-sided tape

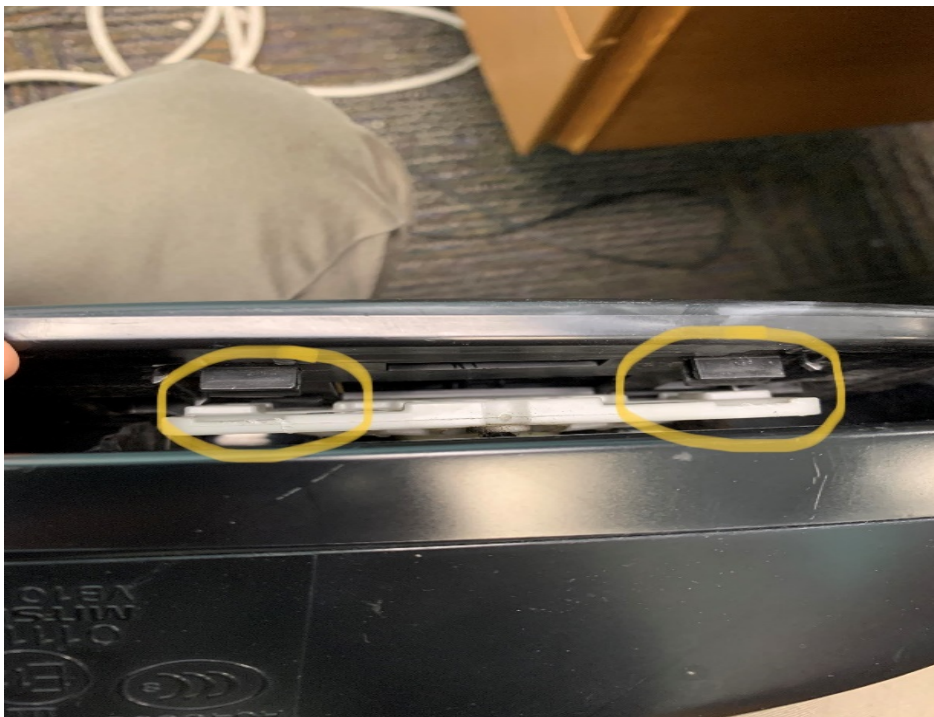
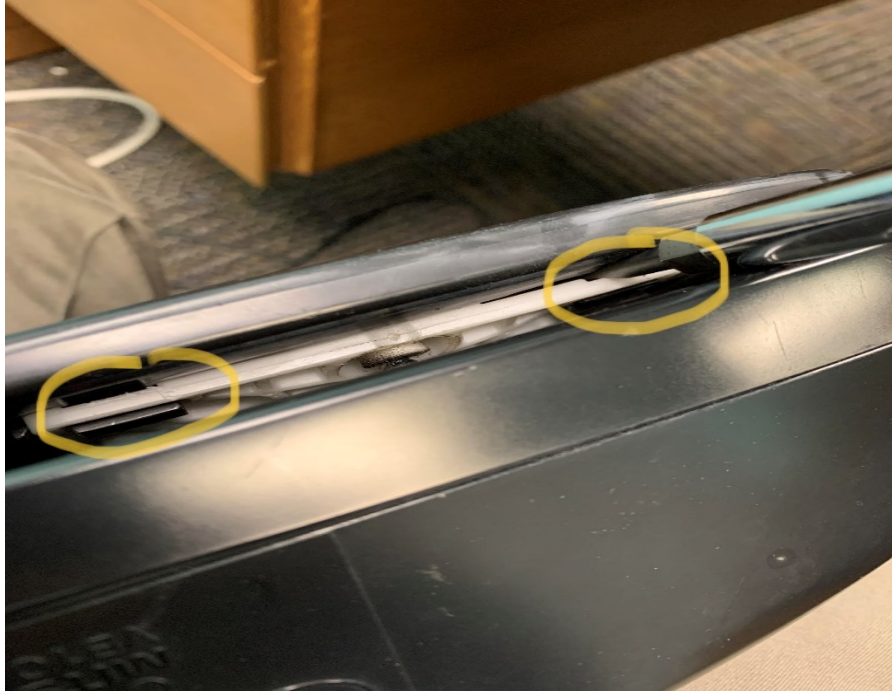
Heat gun/Hair dryer with heat settings

Flat head screwdriver

Install time: 30 mins – 1 hour.

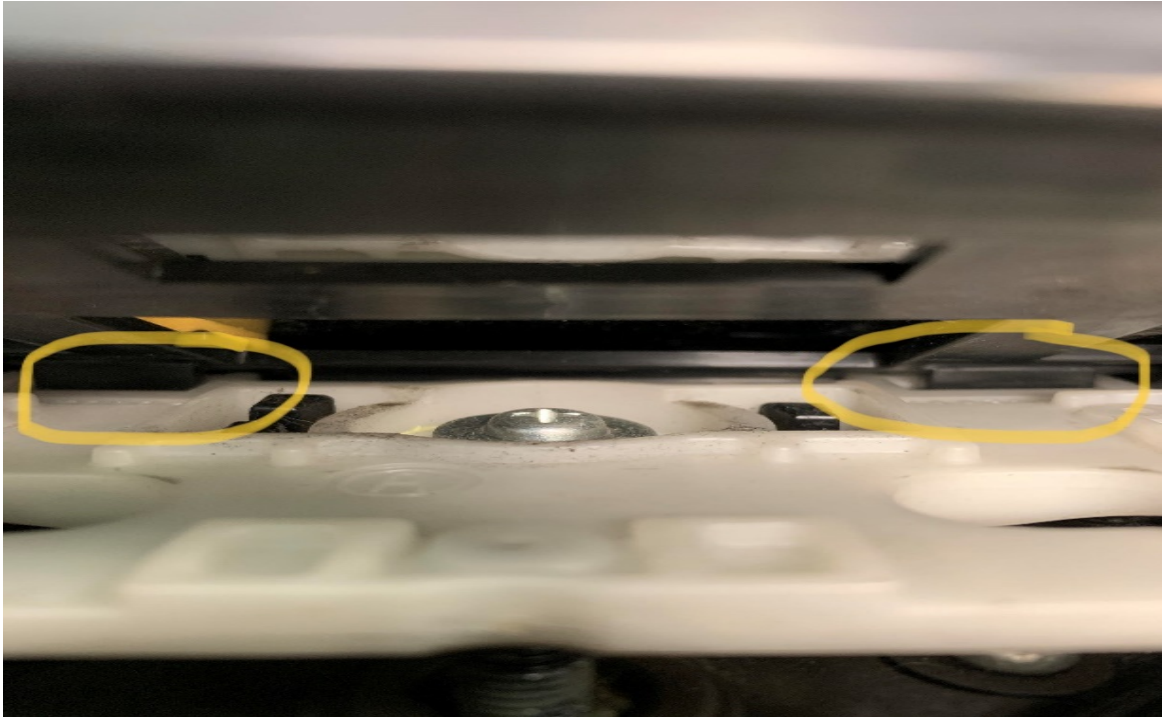


From underneath, move the mirror lens up until you see these two tabs.
Use a flat head screwdriver to pop it free.



Once bottom tabs are free, there are two more tabs on the top. You can just wiggle it out by moving the bottom part outward and pulling it down...Carefully.

Top tabs should look like the picture below.



Separate lens from lens frame.

The lens frame is attached to the lens with double-sided tape. The easiest and safest way to remove the frame is with a little heat. Grab a heat gun and gradually heat the back of the lens frame.



Once the plastic lens case is out, now it's time to take the mirror lens off by heating it up using a heat gun, and a plastic piece to pry the lens off. I normally use a plastic knife (comes with takeout food) but you can also use a plastic trim remover.

The key here is making sure that the glue/tape is warm enough for the lens to come off the plastic casing. Take your time doing this, you do not want to crack the OEM lens if you're planning to put it back on later.

Keep the heat gun moving around, do not keep heating one area.

After warming the back of the lens frame, take a plastic trim removal tool and gently slide it between the frame and the lens. This will help separate the lens from the frame.

Flip the lens frame back over and gradually pry the frame edges around the edges of the lens. Start in one corner and work your way around. The lens will come right out.



Install TS wide angle lens.

Clean the plastic lens case with alcohol or anything that will take the grease and other contaminants off.

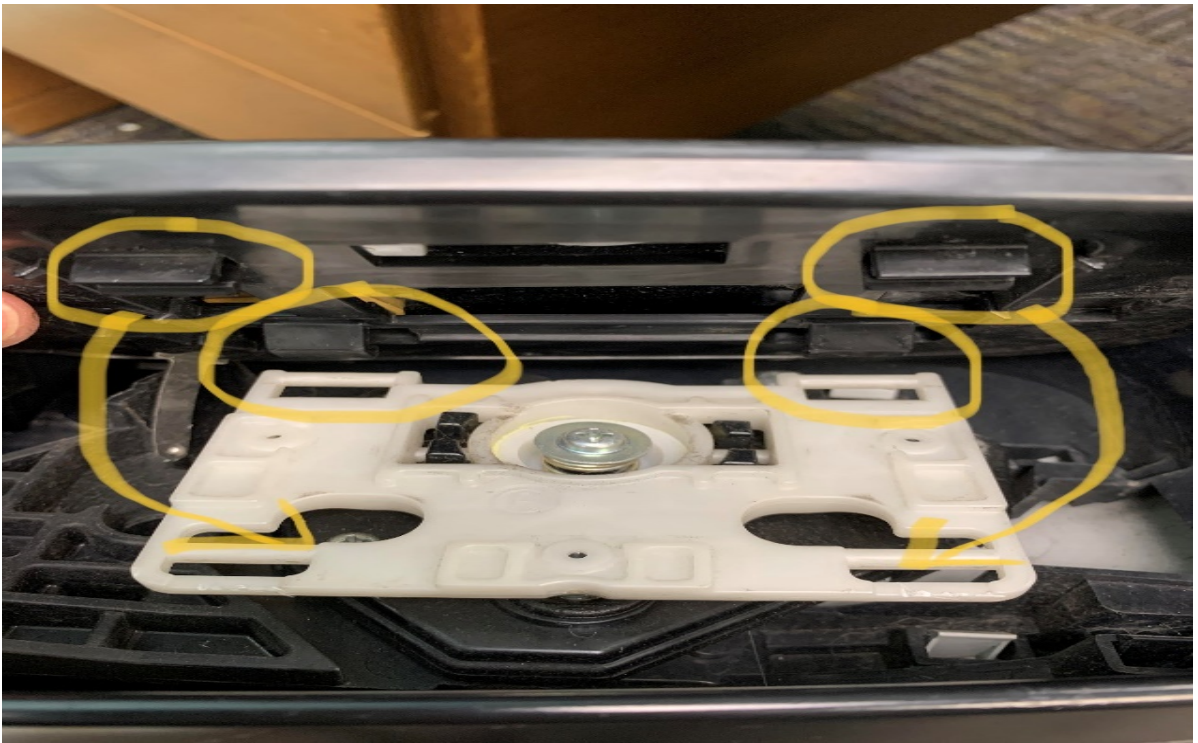
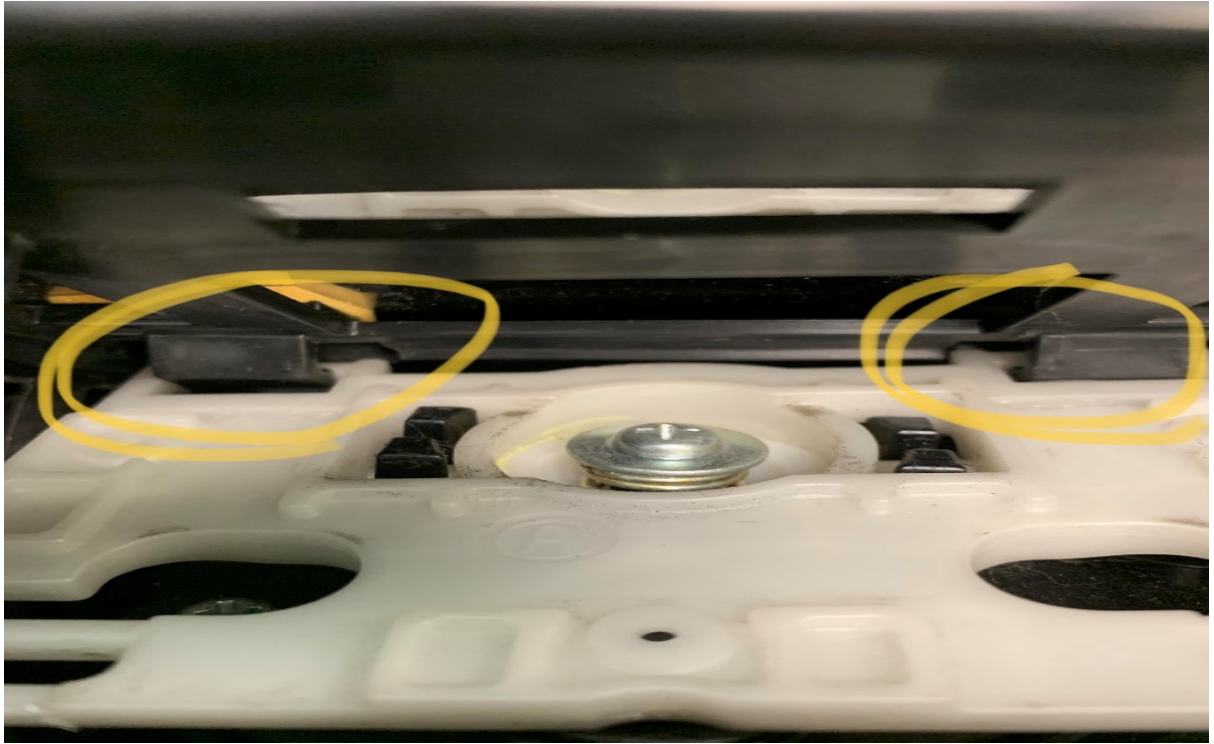
Carefully remove the lens from the package. Double-sided tape can be added to the back of the lens if you choose, but it is not required.

The lens will clip / snap into the frame just like the oem lens. Start with one corner and work the frame around the edge (use your heat gun on low, to slightly warm the black lip) or the lens (the reverse of removing the oem lens).



Now you can install the plastic lens piece back with your new Top Shelf lens. Start on putting the top tabs first by sliding it in.

Make sure the top tabs are in, then proceed to just pop the bottom tabs back on, sometimes a quick tap would work.





Congratulations!!!

You have now installed your new Top Shelf lens!