

# Installation & CARE

## 2015-2019 SUBARU WRX SWITCHBACK SEQUENTIAL LED TAIL LIGHTS INSTALLATION INSTRUCTIONS

### BEFORE INSTALLATION:

- If you experience any difficulties that the instructions did not cover, please seek assistance at a local automotive shop.
- Please wear proper protective equipment before you work on any vehicle.
- An assistant is recommended when removing the front bumper from your vehicle.
- Please be cautious when working with the bumper or any parts belonging to the vehicle's body to prevent scratching.
- Do not make direct contact with the halogen bulbs or the wire assembly until the unit has cooled down after use.

### TOOLS AND SUPPLIES REQUIRED

3/4" Ratchet	8 mm socket	Plastic Pry bar	Trim Pad Remover

### PRODUCT NUMBER

- LT-WRX15JMLED-SQ-TM
- LT-WRX15BBLED-SQ-TM
- LT-WRX15BKLED-SQ-TM
- LT-WRX15RLED-SQ-TM
- LT-WRX15GLELED-SQ-TM



### LET'S START THE INSTALLATION



**STEP 1**  
Remove the three plastic clips



**STEP 2**  
Remove the trunk trim panel cover



**STEP 3**  
Remove the three plastic clips and pull out the trunk side liner cover to access the back of the tail light



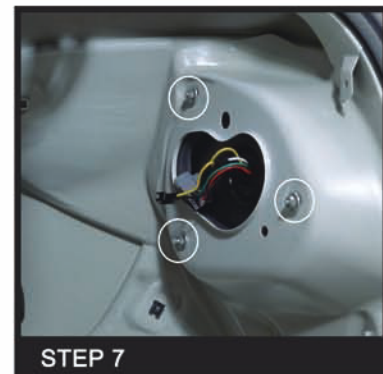
**STEP 4**  
Disconnect the tail light harness and remove the three 8mm tail light mounting nuts



**STEP 5**  
Remove the factory tail light housing



**STEP 6**  
Seat the new tail light assembly in place



**STEP 7**  
Reinstall the three 8mm tail light mounting nuts



**STEP 8**

Connect the tail light harness



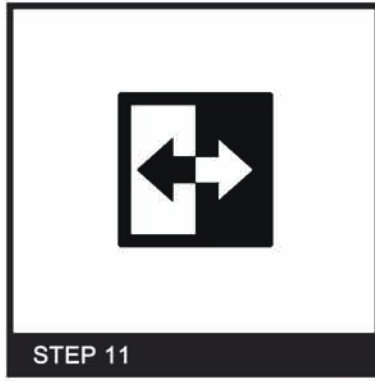
**STEP 9**

Connect the tail light resistor and set the resistor on the metal area



**STEP 10**

Reinstall the trunk side liner cover and the three plastic clips



**STEP 11**

Please repeat the steps from 3 to 10 for the opposite side



**STEP 12**

Close the trunk to complete installation



## 2015-2019 SUBARU WRX SWITCHBACK SEQUENTIAL LED TAIL LIGHTS INSTALLATION INSTRUCTIONS

### BEFORE INSTALLATION:

- If you experience any difficulties that the instructions did not cover, please seek assistance at a local automotive shop.
- Please wear proper protective equipment before you work on any vehicle.
- An assistant is recommended when removing the front bumper from your vehicle.
- Please be cautious when working with the bumper or any parts belonging to the vehicle's body to prevent scratching.
- Do not make direct contact with the halogen bulbs or the wire assembly until the unit has cooled down after use.

## 2015-2019 SUBARU WRX SWITCHBACK SEQUENTIAL LED TAIL LIGHTS INSTALLATION INSTRUCTIONS

