

INSTRUCTION MANUAL

DESKVIEW *MOTIS*



ADHERES TO

- TEMPERED GLASS
- SELECT METAL AND TILE

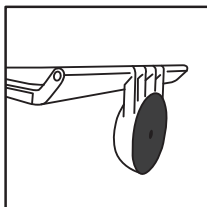
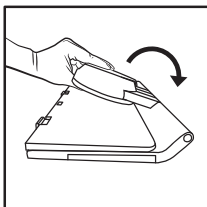
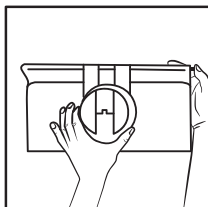


DOES NOT ADHERE TO

- BRICK
- CEMENT
- DRYWALL
- ANY PAINTED OR TEXTURED SURFACE

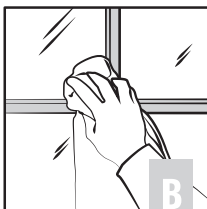
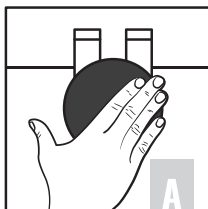
Scan this
to see Video
Instruction





STEP 1 Deploy

Grip the bracket with one hand. As you depress the button on the right of your Motis with the other hand, gently lift the bracket up, extending around the back of your Motis until it locks into place and the button pops back out. The bracket should now be perpendicular, at a 90-degree angle, to the top surface. Check to make sure the bracket is locked in place.

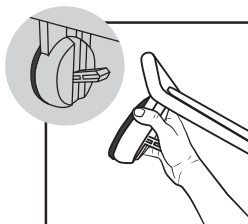


STEP 2 Clean

Wet fingertips and wipe clean the rubber suction discs, leaving them slightly wet. Clean window with water and a microfiber towel.

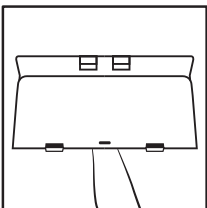
WARNING:

Ensure that the surface selected is **1) smooth, (2) flat, and (3) rated to withstand the forces that will be placed upon it once DeskView is installed.** See website FAQ regarding tempered glass requirement.



TIP:

Ensure that every part of the rubber suction disc contacts the surface and that the disc does not overlap any joints or imperfections on the surface.

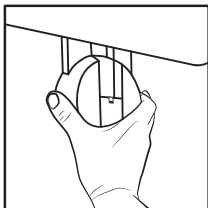


STEP 3 Grip

Lower the lever so it points out from the bracket. Grip the bracket so your thumb and fingers are touching the edges of the suction disc and the lever rests against your palm.

STEP 4 Press

Check to see DeskView is level, then press firmly against the clean, flat glass surface (see "Testing Non - Glass Surfaces" on page 4 for testing other materials).

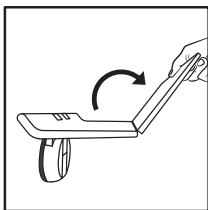


STEP 5 Secure

With your palm, press down the lever.
You should feel resistance as you engage the suction force.

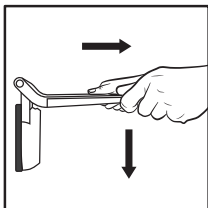
TIP:

The resistance of the negative pressure generated *must* be clearly felt.



STEP 6 Deploy

With the suction disc engaged, unfold the front half of the top surface until it is flat and level.



STEP 7 Deploy

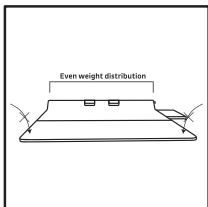
Grab the working surface on each side - Pull Down and then Pull Away from the glass to ensure secure suction. Re-test in 5 minutes and then every 24 hours. If the required suction force has not been achieved, repeat steps 1-4 before using your DeskView.

WARNING:

The suction force may feel strong when initially tested, but impurities in the mounting surface and dust, hair, or debris under the suction disc can slowly allow air into the vacuum chamber, causing your DeskView to lose hold force over time.

Repeat Steps 1-5 every time the outside temperature changes by >30°F.

Do not leave objects unattended on or below DeskView.

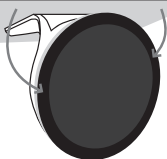


STEP 8 Load

When placing objects, distribute weight equally on both sides of the top surface. Overweighting one side may result in your DeskView dipping or cause the suction disc to twist and lose hold force.

Distribute as much load as possible to the back-half of the top surface, as that is where your Motis has the greatest strength.

Ensure thick, black adherence band at every point of the disc

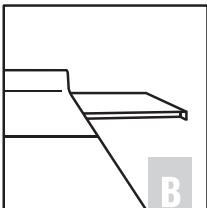
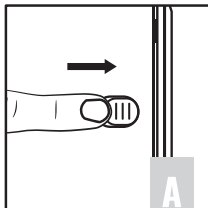


Look out for thin sections or hair/debris that can compromise the vacuum chamber

STEP 9 Seal Check

If you are able to see the back side of the rubber suction disc, you can verify a perfect seal by looking for a thick, black band at every point along the rim of the rubber suction disc.

Thin sections are indications of a compromised seal. Re-install if you notice a compromised seal.



STEP 10

Deploy Side Tray

Depress the button on the underside of your Motis and push outward.

Once enough of the side tray is exposed, gently pull the side tray out until the side tray can no longer extend.

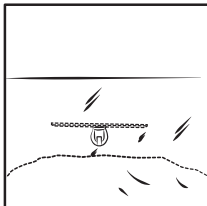
ENJOY!

MAX. LOAD: 20 LBS.
MAX. WINDOW TEMPERATURE: 120°F

FOR TEMPERED GLASS ONLY

IMPORTANT NOTICE:

DeskView is designed and tested for tempered glass. The following testing procedures must be followed before using DeskView on any other surfaces to ensure strong, long-lasting suction force can be maintained.*

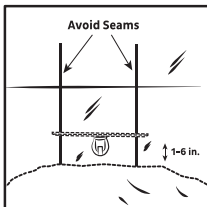


STEP A Safety

Using pillows, blankets, or other soft items, create a safety area directly below DeskView (1-6 inches below where DeskView will be tested) to protect DeskView from damage.

HERE'S WHY:

If the non-glass surface allows air into the vacuum chambers, it will weaken the suction force, causing DeskView to fall.



STEP B Test Installation

Using pillows, blankets, or other soft items, create a safety area directly below DeskView (1-6 inches below where DeskView will be tested) to protect DeskView from damage.

TIP:

You *must* re-test after 5 minutes and 24 hours. The non-glass surface may slowly allow air into the vacuum chambers so DeskView initially appears secure but loses force. Do not place any items on DeskView while testing.



STEP C Final Installation

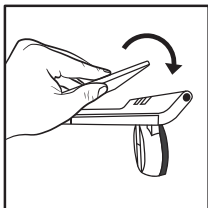
If DeskView remains secure on the non-glass surface after 24 hours, follow installation Steps 1-5 on pages 1-2 at the desired height.

WARNING:

Ensure the non-glass surface is rated to withstand the weight you will be placing on DeskView. Do not use DeskView on any surface that fails Step B.



*DeskView DOES NOT adhere to drywall, cement, and other textured or painted surfaces.



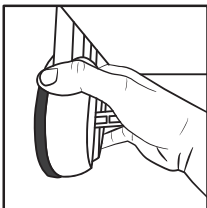
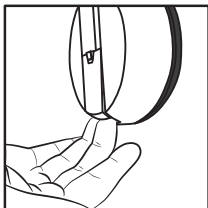
STEP 1 Remove Items

Remove all items on your *Motis*' working surface, slide the side tray back into its housing, and fold the front half of the top surface up and back.

STEP 2

Slowly Release Lever

Grip the bracket so your thumb and fingers are touching the edges of the suction disc and the lever rests against your palm. To release the lever, rotate your hand so your palm faces up with your middle two fingers touching the bottom of the lever. Slowly pull up on the lever with your middle two fingers. Release the lever into your palm to allow for a slow release.



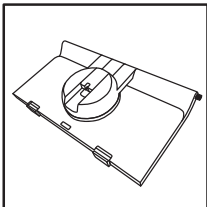
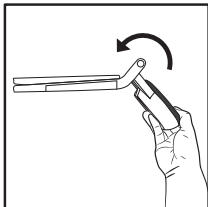
WARNING:

The levers can release at high-speed. Avoid injury and damage to your DeskView by keeping your palm on the lever as you release with your middle two fingers. **DO NOT** place your thumb on the lever at any time.

STEP 3

Break Suction Seal

If DeskView cannot be removed after releasing the lever, then while gripping the bracket as described in Step 2, slide your fingertip between the glass and the rubber suction disc to release the suction force.



STEP 4 Fold Away

Depress the button on the right of your *Motis* and, with the other hand, gently lift the bracket up, extending around the back of your *Motis* until it locks into place and the button pops back out.

The bracket should now be resting on the top surface.

Check to make sure the bracket is locked in place.

- ④ Always keep the rubber suction discs clear of oil, dust, hair and debris.
- ④ Clean the rubber suction discs with water and a micro-fiber towel before every use.
- ④ Check the rubber suction discs for possible deterioration. If rubber suction discs show damage, contact us at contact@shopdeskview.com and replace immediately.*
- ④ DO NOT remove the top surface or try to replace the rubber suction discs or any other components without first receiving proper replacement instructions from us by contacting contact@shopdeskview.com

***DeskView offers FREE REPLACEMENT for damaged rubber suction discs.**





COPYRIGHT

Copyright © Abvious, LLC 2020.

Contents subject to revision without prior notice.

DeskView and *Motis* are registered trademarks of Abvious, LLC (the "Company"). All rights reserved. No part of this manual may be reproduced, transmitted, transcribed, or translated into any language, in any form or by any means, without the prior written consent of the Company.

DISCLAIMER

The company does not warrant the the product will work properly in all environments and applications, and makes no representations or warranties, either implied or express, with respect to the quality, performance, or fitness for a particular purpose.

The company shall not be responsible for products found to be defective as a result of misuse, mishandling, or neglect.

Information contained in this manual is subject to change without notice and the Company reserves the right to make improvements to this manual and/or to the products described in this manual, at any time without notice.

If you would like an electronic copy of the most up-to-date manual or if you find information contained in this manual that is inaccurate, misleading, or incomplete, please contact us at contact@shopdeskview.com

THE COMPANY MAKES NO OTHER REPRESENTATIONS OR WARRANTIES OTHER THAN THOSE SPECIFIED IN THIS MANUAL, OF ANY KIND WHATSOEVER, EXPRESS OR IMPLIED, AND WARRANTIES OF MERCHANTABILITY AND FITNESS FOR A PARTICULAR PURPOSE ARE HEREBY DISCLAIMED BY THE COMPANY AND EXCLUDED FROM THE TERMS OF SALE.

**Please follow these instructions
for the best performance and long life
of your DeskView.**