

INSTRUCTION MANUAL

DESKVIEW



ADHERES TO

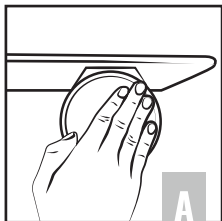
- TEMPERED GLASS
- SELECT METAL AND TILE

DOES NOT ADHERE TO

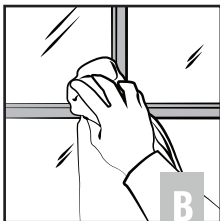
- BRICK - CEMENT - DRYWALL
- ANY PAINTED OR TEXTURED SURFACE

Scan this
to see Video
Instruction





A



B

STEP 1 CLEAN:

Wet fingertips and wipe clean the rubber suction discs, leaving them slightly wet. Clean window with water and a microfiber towel.

WARNING:

Ensure that the surface selected is (1) smooth, (2) flat, and (3) rated to withstand the forces that will be placed upon it once DeskView is installed. See website FAQ regarding tempered glass requirement.

STEP 2 GRIP:

Grip the brackets so your thumbs and fingers are touching the edges of the suction discs and the levers rest against your palms.

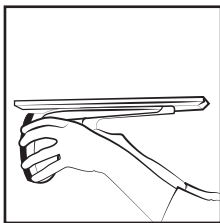


TIP:

Ensure that every part of the rubber suction discs contact the surface and that the discs do not overlap any joints or imperfections on the surface.

STEP 3 PRESS:

Check to see DeskView is level, then press firmly against the clean, flat glass surface (see "Testing Non - Glass Surfaces" on page 3 for testing other materials).

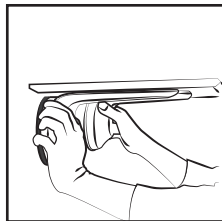


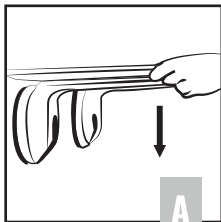
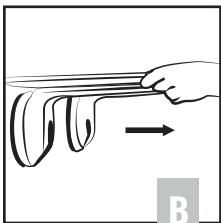
STEP 4 SECURE:

With your palms, press down the levers, one at a time. You should feel resistance as you engage the suction force.

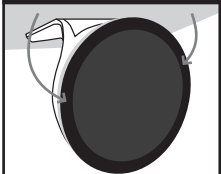
TIP:

The resistance of the negative pressure generated *must* be clearly felt.




A

B

Ensure thick, black adherence band at every point of the disc



Look out for thin sections or hair/debris that can compromise the vacuum chamber

STEP 5 TEST :

Grab the working surface on each side - Pull Down and then Pull Away from the glass to ensure secure suction. Re-test in 5 minutes and then every 24 hours.

If the required suction force has not been achieved, repeat steps 1-4 before using your DeskView.

WARNING:

The suction force may feel strong when initially tested, but impurities in the mounting surface and dust, hair, or debris under the suction disc can slowly allow air into the vacuum chamber, causing your DeskView to lose hold force over time.

Repeat Steps 1-5 every time the outside temperature changes by $>30^{\circ}\text{F}$.

Do not leave objects unattended on or below DeskView.

STEP 6 SEAL CHECK :

If you are able to see the back side of the rubber suction discs, you can verify a perfect seal by looking for a thick, black band at every point along the rim of the rubber suction disc. Thin sections are indications of a compromised seal. Re-install if you notice a compromised seal.

ENJOY!

MAX. LOAD: 40 LBS.
MAX. WINDOW TEMPERATURE: 120°F

FOR TEMPERED GLASS ONLY

TESTING NON-GLASS SURFACES

IMPORTANT NOTICE:

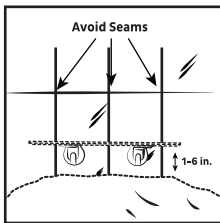
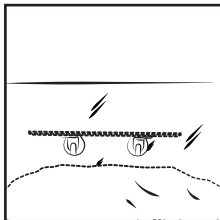
DeskView is designed and tested for tempered, commercial, high-rise glass. The following testing procedures must be followed before using DeskView on any other surfaces to ensure strong, long-lasting suction force can be maintained.*

STEP A SAFETY:

Using pillows, blankets, or other soft items, create a safety area directly below DeskView (1-6 inches below where DeskView will be tested) to protect DeskView from damage.

HERE'S WHY:

If the non-glass surface allows air into the vacuum chambers, it will weaken the suction force, causing DeskView to fall.



STEP B TEST INSTALLATION:

Following Installation Steps 1-5 on pages 1-2, install DeskView on the non-glass surface (avoiding grout and seams) 1-6 inches above the safety area. Test for secure install after 5 minutes and 24 hours.

TIP:

You *must* re-test after 5 minutes and 24 hours. The non-glass surface may slowly allow air into the vacuum chambers so DeskView initially appears secure but loses force. Do not place any items on DeskView while testing.

STEP C FINAL INSTALLATION:

If DeskView remains secure on the non-glass surface after 24 hours, follow installation Steps 1-5 on pages 1-2 at the desired height.

WARNING:

Ensure the non-glass surface is rated to withstand the weight you will be placing on DeskView. Do not use DeskView on any surface that fails Step B.



*DeskView DOES NOT adhere to drywall, cement, and other textured or painted surfaces.

REMOVAL INSTRUCTIONS

STEP 1 REMOVE ITEMS :

Remove all items placed on DeskView's working surface.

STEP 2 SLOWLY RELEASE EACH LEVER :

Grip both brackets so your thumbs and fingers are touching the edges of the suction discs and the levers rest against your palms. To release the lever, rotate your hand so your palm is facing up with your middle two fingers touching the bottom of the lever. Slowly pull up on the lever with your middle two fingers. Release the lever into your palm to allow for a slow release.

WARNING:

The levers can release at high-speed. Avoid injury and damage to your DeskView by keeping your palm on the lever as you release with your middle two fingers. DO NOT place your thumb on the lever at any time.

STEP 3 BREAK SUCTION SEAL :

If DeskView cannot be removed after releasing the levers, then while gripping the brackets as described in Step 2, slide your fingertip between the glass and the rubber suction disc to release the suction force.

- ④ Always keep the rubber suction discs clear of oil, dust, hair and debris.
- ④ Clean the rubber suction discs with water and a micro-fiber towel before every use.
- ④ Check the rubber suction discs for possible deterioration. If rubber suction discs show damage, contact us at contact@shopdeskview.com and replace immediately.*
- ④ DO NOT remove the top surface or try to replace the rubber suction discs or any other components without first receiving proper replacement instructions from us by contacting contact@shopdeskview.com

***DeskView offers FREE REPLACEMENT for damaged rubber suction discs.**



<https://DeskView.co>

COPYRIGHT

Copyright © Abvious, LLC 2017.

Contents subject to revision without prior notice.

DeskView is a registered trademark of Abvious, LLC (the "Company"). All rights reserved. No part of this manual may be reproduced, transmitted, transcribed, or translated into any language, in any form or by any means, without the prior written consent of the Company.

DISCLAIMER

The company does not warrant the the product will work properly in all environments and applications, and makes no representations or warranties, either implied or express, with respect to the quality, performance, or fitness for a particular purpose.

The company shall not be responsible for products found to be defective as a result of misuse, mishandling, or neglect.

Information contained in this manual is subject to change without notice and the Company reserves the right to make improvements to this manual and/or to the products described in this manual, at any time without notice.

If you would like an electronic copy of the most up-to-date manual or if you find information contained in this manual that is inaccurate, misleading, or incomplete, please contact us at contact@shopdeskview.com

THE COMPANY MAKES NO OTHER REPRESENTATIONS OR WARRANTIES OTHER THAN THOSE SPECIFIED IN THIS MANUAL, OF ANY KIND WHATSOEVER, EXPRESS OR IMPLIED, AND WARRANTIES OF MERCHANTABILITY AND FITNESS FOR A PARTICULAR PURPOSE ARE HEREBY DISCLAIMED BY THE COMPANY AND EXCLUDED FROM THE TERMS OF SALE.

**Please follow these instructions for the
best performance and long life of your
DeskView.**



Made in China