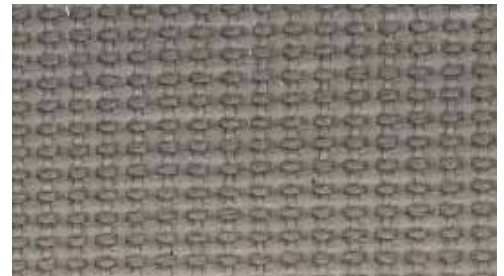


M4 Mesh



Latte M40



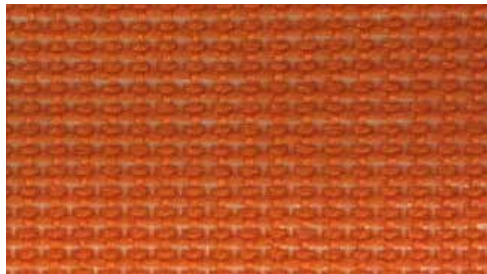
Cloud M41



Lemon M42



Apple M43



Tangerine M44



Aqua M45

Pattern: M4 Mesh

68% Polyester, 32%
Poly Elastomeric

Abrasion: 100,000
Double Rubs

Bleach Cleanable



Crimson M46



Electric Blue M47



Onyx M48



Dove M49



**EXPRESSSHIP
FABRICS**


9to5 Seating's Express Ship Mesh Program

Need it fast? We have you covered with a wide variety of mesh options!

Our Express Ship program offers expedited delivery on our seating products, now including Vivid mesh and fabric options. This is in combination with seat fabric selected from our 9to5 Seating Signature Express Ship Card.




info

Pattern	M4 Mesh
Fiber Content	68% Polyester, 32% Elastomeric
Abrasion	100,000 Double Rubs
Applicable ACT®	
Light-fastness	5-7
Cleaning Code	WS/BC : 10:1 WS: Water based foam or cleaner BC: Bleach Cleanable 10:1


All patterns are FR free.


Icon Upholstery Definitions


 **Fire Retardancy**
Flammable testing determined as fabric's resistance to burning.
PASSES - California 117


 **Colorfastness To Wet & Dry Crocking**
Colorfastness to wet & dry crocking refers to the rubbing off of color from the fabric unto clothing, hands or other materials and can occur under wet or dry conditions.
PASSES - AATCC 8-1974 Dry Crocking, Class 4 minimum; Wet Crocking, Class 3 minimum.

Abrasion
Abrasion is the ability of fabric to withstand damage from wear and rub. This is a general contract specification as well as a heavy duty specification.
PASSES -

 General Contact: ASTM 3579 modified (#10 cotton duck); 15,000 double rubs Wyzenbeek Method

 Heavy Duty: ASTM 3579 modified (#10 cotton duck); 30,000 double rubs Wyzenbeek Method or ASTM D4966 (with 21oz. weight); 40,000 rubs Martindale Method

 **Colorfastness to Light**
Colorfastness to light is the degree to which fabric will retain its color when exposed to light.
PASSES - AATCC 16A-1974 or AATC 16E-1976; Class 4 minimum at 40 Hours. NOTE: Class 4 minimum at 60 hours is recommended for direct sunlight exposure situations.

 **Physical Properties**
3 Physical property tests include: brush pill test to determine a fabric's pilling. Breaking/tensile strength is the ability of a fabric to withstand tension without breaking or tearing. Seam slippage is the pulling apart of fabrics at the seam.
PASSES - Brush Pill ASTM D3511, 3-4 minimum. Breaking Strength ASTM D3597-D1682-64 (1975) 50lbs. minimum in warp & weft Seam Slippage ASTM D3597-D434-75 25lbs. minimum in warp & weft.

9to5[®]
seating

3211 Jack Northrop Ave.
Hawthorne, CA 90250

PHONE
888.925.SEAT

FAX
866.925.SEAT

EMAIL
sales@9to5seating.com

9to5seating.com
Follow us: @9to5seating

