

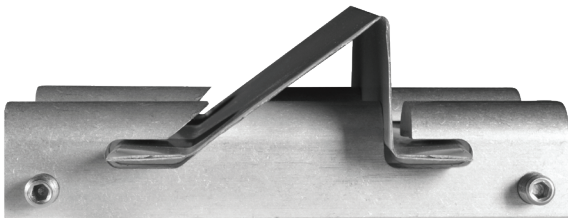
## FEATURES AND BENEFITS

- Designed for standing seam roofs
- Made in USA
- Colored rail bent out of customer inventory
- Freight savings
- Efficient inventory management
- Product testing independently verified
- 25 Year Warranty

The MRC SNOW TRAX standing seam roof clamp system has been designed to provide the highest degree of safety.

The extruded aluminum clamp is attached to the roof panel rib by tightening two 5/32" stainless steel cone set screws. They should be set at 70-90 inch pounds of torque. The cone shape of the point will not penetrate the seam. This will ensure the weather tightness & protect the finish on the roof panel. The clamp & rail system is designed to provide excellent holding strength.

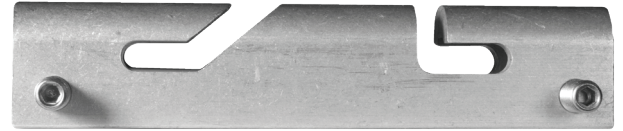
The 25 year written warranty ensures that the MRC SNOW TRAX is free of material defects, & will provide a safe & maintenance free snow retention system.



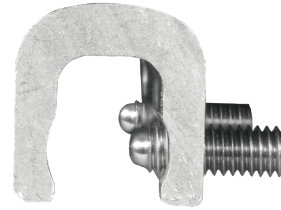
**TABLE 1 - TEST RESULTS FOR MRC SNOW TRAX**

Ultimate Axial Load Capacity - 26 gauge steel roof panel	913 lbf [S.D. 46.6 lbf]
Ultimate Axial Load Capacity - 24 gauge steel roof panel	843 lbf [S.D. 67.4 lbf]
Ultimate Axial Load Capacity - All Samples	878 lbf [S.D. 64.7 lbf]

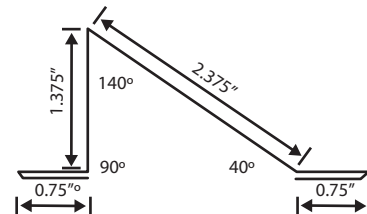
## MRC SnowTrax™



The Extruded Aluminum alloy clamp is machined with pre-drilled holes. 26 gauge colored rail is formed to slide through the grooves in the clamp.

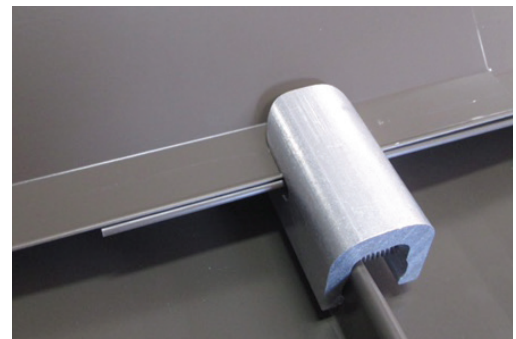


304 Stainless Steel coned set screws are provided to secure the clamp to the standing seam roof panel.



The schematic drawing below illustrates the dimensions to fabricate the rail from the same material as the roof.

## APPLICATIONS



The MRC SNOW TRAX is shown installed with the colored rail.



The MRC SNOW TRAX is both functional & attractive. The colored rail blends into the overall look of the roof panel.

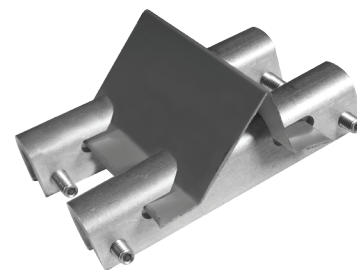
**MRC**  
**SnowTrax**™



# Putting the Clamps on Snow

**Bend Your Own Rail From Your Color Matched Roof Material**

ST FASTENING SYSTEMS introduces a functional but aesthetic way to prevent snow & ice dams from building up on standing seam metal roofs. The MRC SNOW TRAX incorporates a roof clamp & rail system that is easy to install & blends well into the color scheme of the roof panel. The panel manufacturer will form the rail from trim stock & slide it through the clamp to complete the system. It is functional & cost effective.



The extruded aluminum clamp & painted 26 gauge metal rail combine to form the MRC SNOW TRAX system

**SnowTrax**™ Available For Exposed Fastener Metal Panels



304 Stainless Steel snow guard is available in 28 powder coated industry standard colors. Use with the WOODBINDER MB micro-bit for a secure attachment to metal roof panels.