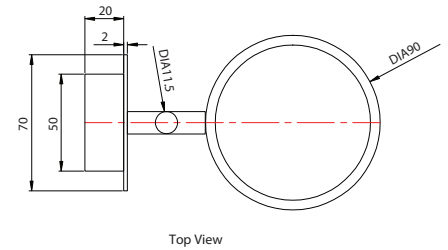


STANLEY

Ambience can be created within any home with the right lighting. In this Collection, create an elegant atmosphere that is akin to your favourite Show Gallery. Selecting only the best styles and the use of the best materials, let the light illuminate your room with a warmth that ignites emotions within.



Product Code	MAN-WLST-GD
Type	Wall Lamp
Finish	Plated
Material	Iron + 1.0m Frost Acrylic Cover
Color	Gold
Extra Info	It is also available in Chandelier
Cleaning Instructions	Wipe with a clean cloth to remove any dirt or dust. Avoid the use of any abrasive cleaning products. For stubborn marks, wash with warm water and a mild soap, and rinse with warm water. Never use strong solvents to clean power coated surfaces. Revive dull surfaces using car polish.

	Dimensions (mm)			
	<table border="0"> <tr> <td>Diameter</td> <td>90</td> </tr> <tr> <td>Height</td> <td>300</td> </tr> </table>	Diameter	90	Height
Diameter	90			
Height	300			
	<table border="0"> <tr> <td>Bulb Spec</td> </tr> <tr> <td>2.5W LED Bulb G9 2X Max 240V</td> </tr> </table>	Bulb Spec	2.5W LED Bulb G9 2X Max 240V	
	Bulb Spec			
2.5W LED Bulb G9 2X Max 240V				
	<table border="0"> <tr> <td>Cord Length</td> </tr> <tr> <td>-</td> </tr> </table>	Cord Length	-	
Cord Length				
-				
	<table border="0"> <tr> <td>Ceiling Canopy (mm)</td> </tr> <tr> <td>-</td> </tr> </table>	Ceiling Canopy (mm)	-	
Ceiling Canopy (mm)				
-				
	<table border="0"> <tr> <td>Weight (kg)</td> </tr> <tr> <td>3</td> </tr> </table>	Weight (kg)	3	
Weight (kg)				
3				