

# RECONFIGURABLE AND REUSABLE MODULAR OFFICE WALL SOLUTIONS



EverBlock® & EverPanel® are used by corporations both large and small to create beautiful and unique office spaces, temporary walls, partitions, room dividers, cubicles and modular furniture.



# So You Need An Office Wall Or Divider?

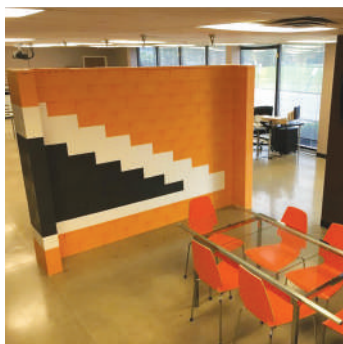
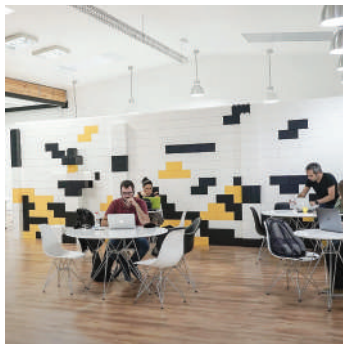
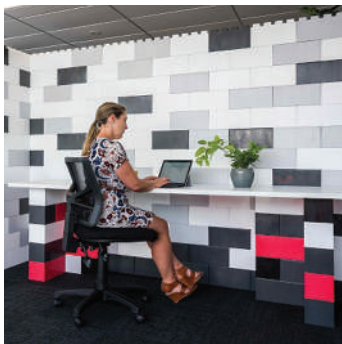
## Choose Which Wall System Is Best For Your Needs.

**EverBlock** modular wall solutions are fully **customizable, 100% reusable and reconfigurable**, and can meet any company or brand's **style, colors and culture**. Use **EverBlock®** and **EverPanel®** to delineate offices, build temporary walls, divide spaces, create conference rooms and deploy instant offices. Design inviting locations for your employees to meet, work, brainstorm and collaborate.



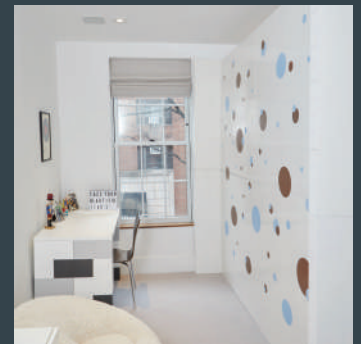
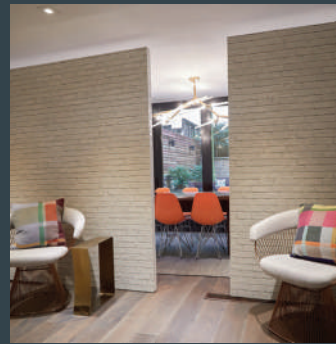
### COLORFUL MODULAR BUILDING BLOCKS TO BUILD WALLS... AND MORE

Offices interested in building temporary walls that add an architectural element and contributes to the spirit of innovation will love incorporating **EverBlock** building blocks into the interior design of their office space. With **EverBlock**, clients can create all types of accent walls, portable office dividers, branded modular walls, stylish cubicles, pony walls and much more.



### SOPHISTICATED MODULAR WALL PANELS

The **EverPanel** instant wall system is flexible, allowing you to build all types of floor plans, economically divide spaces and define office areas. Quickly build offices, conference rooms, break rooms, visitor areas, branded walls or any type of partition required, using a series of lightweight, durable fiberglass composite panels that connect with adjacent panels using a proprietary lug and connector system.



## EVERBLOCK®

Varying size building blocks allow for custom interior walls to meet any spacial needs and blocks are available in 16 exciting colors to match your design goals. Build accent walls and office dividers in any height, width, thickness, color or shape.

**EverBlock** allows clients to create beautiful office, residential and factory dividers, desks, modular furniture and furnishings that add an architectural element that contributes to the spirit of innovation.

Add semi-translucent blocks to run **LED** lighting strips within to create illumination or to allow diffused light to enter.


Reconfigure walls as needs change and repurpose building blocks into a multitude of other objects; from desks to seating, and from cubicle walls to stimulating decor.

## EVERPANEL®

With 18 panel size options, window panels and door panels, various panels can be combined and connected to build permanent or temporary walls that meet a space's specific needs.

**EverPanel** allows clients to run electrical and power cables within and between panels in any direction, providing a clean and connected workspace. Add doors, windows and openings as needed. Adhere standard adhesive backed wallpaper to your walls to customize your space and walls in an instant.

Installation is quick and simple, there are no tools required for assembly. Reconfigure walls as needed. Sections are easy to transport, install, remove and store compactly. Build temporary offices, walls and partitions as needed or permanent walls as your company grows.

FEATURES	EVERBLOCK BUILDING BLOCKS	EVERPANEL MODULAR WALL PANELS
<b>Color Options</b>	16 Color Options	White
<b>Integrated Cable Channels</b>	Limited	Yes
<b>Window Panels</b>	No	Clear polycarbonate panels
<b>Door Options Available</b>	Accordion door	Accordion door & standard swing door
<b>Fire Tested</b>	UL94HB	E84
<b>Reusable &amp; Reconfigurable Into Other Objects/Structures</b>	Yes	Can be reconfigured into other wall sizes & layouts
<b>Shelving &amp; Desk Accessories Available</b>	Yes	No
<b>Wall &amp; Ceiling Mounts</b>	Wall mount	Wall mount & ceiling bracket
<b>Can Receive Wallpaper</b>	Yes	Yes
<b>Material</b>	Hi-Impact Polypropylene Co-Polymer ("no-break") with UV Inhibitors	Moisture & Impact Resistant Fiberglass Reinforced Panels (FRP), bonded to a fire retardant ABS skeleton, incorporating additives for smoke reduction, fire retardancy & additional durability.
<b>Typical Wall Width</b>	6"	3"
<b>Manufactured in the USA</b> 	Yes	Yes

# Features & Specifications



## EASY TO INSTALL MODULAR BLOCKS

The **EverBlock®** system is modular and is designed to be 100% reusable and reconfigurable. Choose between **different sized** blocks and finishing caps, as well as **16 vibrant colors**, to create objects for all types of uses.

## BLOCK MATERIAL

Hi-Impact Polypropylene Co-Polymer (“no-break”) with UV Inhibitors added. EverBlock is recyclable.

## FIRE RATING: UL94HB

UL94HB (Underwriters laboratory Yellow Card Number): signifying that EverBlock material embodies a slow burn rate of 2” per minute for a 2” wide by 0.5” in thickness test sample. Furthermore, UL94HB signifies that the material will not flare up when exposed to an open flame.

Hot wire ignition rating: 3

## WIDE SELECTION OF COLORS

We offer a wide palette of colors, enabling you to match design needs, corporate colors, event themes, or other color requirements.



## UNIQUE PRODUCT FEATURES

- Finishing Caps Create a Flat Top Surface
- Shelving, DeskTops, and Doorway Lintels
- Durable, Stable, Waterproof, and Easy To Clean
- Easily Transportable

## MODULE SIZES & WEIGHTS

- **Full Block:** 12”L x 6”W x 6”H (+1” for lugs) - 1.72 lbs.
- **Line Block:** 12”L x 3”W x 6”H (+1” for lugs) - 0.87 lbs.
- **Half Block:** 6”L x 6”W x 6”H (+1” for lugs) - 0.91 lbs.
- **Quarter Block:** 3”L x 6”W x 6”H (+1” for lugs) - 0.53 lbs.
- **Single Lug Block:** 3”L x 3”W x 6”H (+1” for lug) - 0.25 lbs.
- **Finishing Cap:** 12”L x 6”W x 1.1”H - 0.39 lbs.
- **Finishing Cap Quarter Size:** 3”L x 6”W x 1.25”H - 0.11 lbs.



## EASY TO INSTALL MODULAR WALL PANELS

The **EverPanel** system is **modular**, which means you start with as many panels as you need and can later add to your construction. You can easily **reconfigure, transport, and re-assemble** your designs in minutes and re-use panels in new locations or in new configurations.

## PANEL MATERIAL

Moisture and Impact Resistant **Fiberglass Reinforced Panels (FRP)**, bonded to a fire retardant ABS skeleton, incorporating additives for smoke reduction, fire retardancy and additional durability.

## FIRE RATING

**Fire Rating E84** - Pass - Class C.

**R-Value:** R-Value for EverPanel panels is estimated at **R-2** based on 3 inches of air space and two exterior FRP walls .

## COLORS

- **White FRP Panel** (with White Frame)

## UNIQUE PRODUCT FEATURES

- UV Protection
- Cable Channels
- Easily Transportable

## MODULE SIZES & WEIGHTS

- **8ft x 4ft Panel:** 96” x 48” x 3” - 60.5 lbs.
- **8ft x 3ft Panel:** 96” x 36” x 3” - 46.5 lbs.
- **8ft x 2ft Panel:** 96” x 24” x 3” - 34 lbs.
- **8ft x 1ft Panel:** 96” x 12” x 3” - 19.5 lbs.
- **7ft x 4ft Panel:** 84” x 48” x 3” - 55 lbs.
- **7ft x 3ft Panel:** 84” x 36” x 3” - 40 lbs.
- **7ft x 2ft Panel:** 84” x 24” x 3” - 30.5 lbs.
- **7ft x 1ft Panel:** 84” x 12” x 3” - 17.5 lbs.
- **4ft x 4ft Panel:** 48” x 48” x 3” - 33.5 lbs.
- **4ft x 3ft Panel:** 48” x 36” x 3” - 23.5 lbs.
- **4ft x 2ft Panel:** 48” x 24” x 3” - 18 lbs.
- **4ft x 1ft Panel:** 48” x 12” x 3” - 10.5 lbs.
- **3ft x 3ft Panel:** 36” x 36” x 3” - 19 lbs.
- **3ft x 2ft Panel:** 36” x 24” x 3” - 14 lbs.
- **3ft x 1ft Panel:** 36” x 12” x 3” - 9 lbs.
- **2ft x 2ft Panel:** 24” x 24” x 3” - 10 lbs.
- **2ft x 1ft Panel:** 24” x 12” x 3” - 6 lbs.
- **1ft x 1ft Panel:** 12” x 12” x 3” - 3.5 lbs.

## PANEL ACCESSORIES

- **Lug Connector** (EP-LUG)
- **Finishing Cap** (EP-CAP)
- **2-Way Interpanel Connector** (EP-2 Way)
- **3-Way Interpanel Connector** (EP-3 Way)
- **Mounting Cap** (EP-MOUNT)
- **Panel Door Kit** (EP-DOOR)
- **Lintel** (EP-LINTEL NARROW)
- **L-Channel Extrusion** (EP-L CHANNEL)
- **Ceiling Connector Bracket** (EP-CEILING BRACKET)
- **Window** (EP-WINDOW)