

KYOWA SERVICE CENTER (MAIN)

Rm. 1203 State Center Building
#333 Juan Luna St., Binondo
Manila, Philippines
242-1731 to 35

AFFILIATED TRONIX SERVICE CENTERS:

- 1. TRONIX MAIN Q.C.**
777 N.S. AMORANTO ST., COR STO.DOMINGO AVE, Q.C.
TEL NOS. 749-8477 / 743-9094 / 4132775 / 743-0354
CELLPHONE NO: 0922-8534797
CONTACT PERSON: MS. SHARENE TAN
- 2. TRONIX SAN JUAN BRANCH**
135 N.DOMINGO ST., COR PINAGLABANAN, SAN JUAN
TEL NO: 721-9147
CELLPHONE NO: 0922-9218653
CONTACT PERSON: MS. MAY BONZON
- 3. TRONIX MANILA BRANCH**
1793 CONCEPCION AGUILA ST., NEAR J.P. LAUREL,
SAN MIGUEL MANILA
TEL NO: 734-4088
CELLPHONE NO: 0922-7909555
CONTACT PERSON: MS. ANGEL BARBASTRO
- 4. TRONIX STA. CRUZ BRANCH**
#910 LUZON ST., (BET MASANGKAY & BENAVIDEZ ST)
STA CRUZ MANILA
TEL NO: 310-3353
CELLPHONE NO: 0922-2389971
CONTACT PERSON: MS. SHIRLEY DELA CRUZ
- 5. TRONIX ALABANG TOWN CENTER BRANCH**
LA-7 SERVICE TOWN, ALABANG TOWN CENTER,
MUNTINLUPA CITY
TEL NO: 807-3546
CELLPHONE NO: 0922-7584917
CONTACT PERSON: MS. EVELYN DENISING
- 6. TRONIX PARANAQUE BRANCH**
#51 PRESIDENT AVE., BF HOMES PARANAQUE
TEL NO: 828-2915
CELLPHONE NO: 0932-4060806
CONTACT PERSON: MS. ELIZABETH PALIMA
- 7. TRONIX CAVITE BRANCH**
GOV DRIVE, BRGY LANGKAAN II (INFRONT OF PCIE
COMPOUND) CATHERINE SQUARE BLDG II, DASMARINAS
CAVITE
TEL NOS.: 475-6362 / (046) 852-2955
CELLPHONE NO: 0922-3377214
CONTACT PERSON: MR. ARSENIO ANGELES
- 8. TRONIX MANDALUYONG BRANCH**
#412 SHAW BOULEVARD COR TORRES ST.,
MANDALUYONG CITY
TEL NOS.: 725-7290
CONTACT PERSON: MS. JENY



ELECTRIC STEAMER

MODEL # KW-1901

Voltage: 220V a.c. 60Hz Power: 700 WATTS



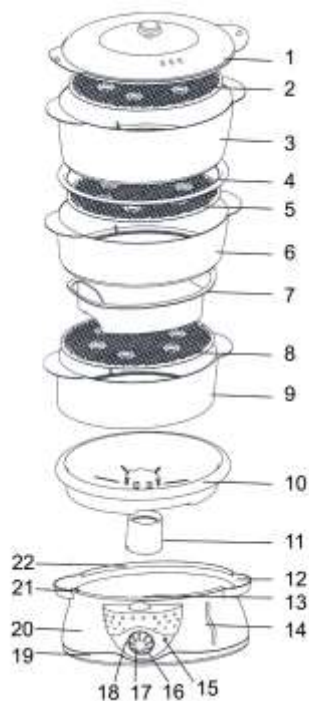
INSTRUCTION MANUAL

CONGRATULATIONS

You are now a proud new owner of a KYOWA Electric Steamer model no. KW-1901.

Before using for the first time, kindly take time to carefully read your instruction manual. Please observe all safety precautions and follow operating procedures. After reading, kindly store your instruction manual in a safe place for your future reference. Should you pass on this Electric Steamer to a third party, please hand over this instruction manual as well.

PARTS DESCRIPTION



1. Cover
2. Rice Bowl
3. Steamer Tray - Large
4. Steamer Tray - Medium
5. Steamer Tray - Small
6. Steamer Ring
7. Liquid Catcher
8. Removable Ring
9. Heater Element
10. Base
11. Base cover
12. Timer Knob
13. Removable
14. Timer Cover
15. Removable Grid
16. Water Level Indicator
17. Deco Ring
18. Water Filling Device
19. Water Reservoir

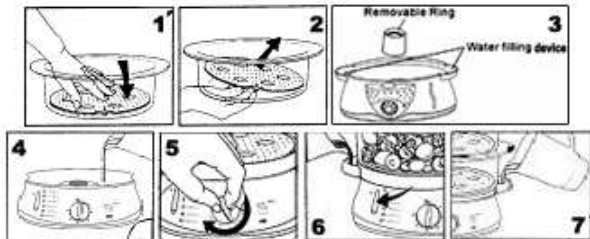
IMPORTANT SAFEGUARDS

When using the Electric Steamer, basic safety precautions should always be followed:

- Always operate your KYOWA Electric Steamer from a power source of the same voltage and frequency rating as indicated on the rating label.
- Connect the Electric Steamer unit only to properly wired wall outlets.
- Do not use Electric Steamer in damp or wet area. Keep dry the exterior and the base of the steamer.
- Do not place the Electric Steamer on uneven surfaces. Place upon a flat area surface.
- Do not operate or place any part of your KYOWA Electric Steamer on or near any hot surface such as a gas or electric burner, hotplate or heated oven.
- Do not operate the Electric Steamer if any part of it has been damaged. Return the appliance to the nearest authorized dealer or service facility for repair.
- Make sure that the steamer is unplugged when filling with (cold) water.
- Always ensure that the cover is tightly closed when boiling water.
- Do not use or replace accessories other than the ones originally provided.
- Never leave the Electric Steamer unattended when in use.
- Do not move Electric Steamer when power is ON or when the water inside is still boiling. Turn power to OFF before moving.
- Avoid touching hot surfaces of the Electric Steamer during use. Use the cover or handle only.
- Hold plug when unplugging from socket. Do not unplug by pulling the supply cord.
- Switch OFF and unplug the Electric Steamer from outlet before filling, emptying, when not in use or before cleaning.
- To reduce the risk of electric shock, do not immerse or expose the Electric Steamer to rain, moisture or any liquid.
- Keep out of reach from children or from persons with mental or physical disabilities.
- This KYOWA Electric Steamer is intended for normal domestic/household use only. This unit is not suitable for commercial use.

HOW TO USE

- Place the Removable Bottom Tray on the center of the Steamer Tray with clip pointing downward.
- Press tray downward until clip is locked in place.
- To ensure Bottom Tray is properly placed, push underneath the tray to check if it is securely locked.
- Pour water into the Water Vessel between the MIN and MAX line. Do not mix in salt or any other condiments in the water.
- Place removable ring – larger opening on bottom part and smaller opening on top – around the heater element.
- Place the Liquid Catch Tray on top of the Water Vessel.
- Place Steamer Tray # 1 on top of the liquid catch tray. To be able to identify which trays go on the first layer, a circle mark should be found on the handle of steamer trays. 1 circle mark means for the first layer, 2 for the second and 3 circle marks on the third layer.
- Put food inside the Steamer Tray.
- If needed, place Steamer Tray # 2 on the second layer.
- Put Steamer Ring on top Steamer Tray #2 then place Steamer Tray # 3 on top. Cover top with steamer cover.
- Switch power to ON by turning timer knob clockwise. When setting steamer to less than 10 minutes, rotate knob to 15 minutes then rotate counter clockwise to desired time to activate power.
- While steaming, check Water Level Indicator from time to time to see if more water should be added to it.
- Add water into the vessel by pouring through the side pouring lip or the water filling device.
- After timer has switched OFF and food is cooked, unplug the steamer unit.
- Carefully remove the cover avoiding hot steam coming from the steamer.
- Transfer steamed food from steamer trays into serving dishes.
- When steaming eggs or rice, use the provided rice bowl or egg tray.



CLEAN AND CARE

- After every use, wash the movable accessories of the steamer including the steamer trays, grids, rings, and cover with warm and soapy water.
- Rinse water vessel with water, careful not to allow liquid into the motor of the steamer.
- Do not use harsh cleaning agents or abrasive objects (e.g. scrubbing pads or metal brushes) for cleaning.
- Do not use dishwasher to clean any part of the steamer.
- Put back parts and accessories of the Electric Steamer to their proper places before operating again.
- After washing, wipe dry all parts and store in a cool, dry place.

SERVICE

- Do not operate your KYOWA Electric Steamer if the unit malfunctions or appears damaged in any manner. Bring the complete product to the place of purchase or to any authorized KYOWA dealers for inspection, repair or replacement.
- Do not disassemble your KYOWA Electric Steamer by yourself. No user serviceable parts inside. Refer all needed repair to an authorized KYOWA service facility ONLY.