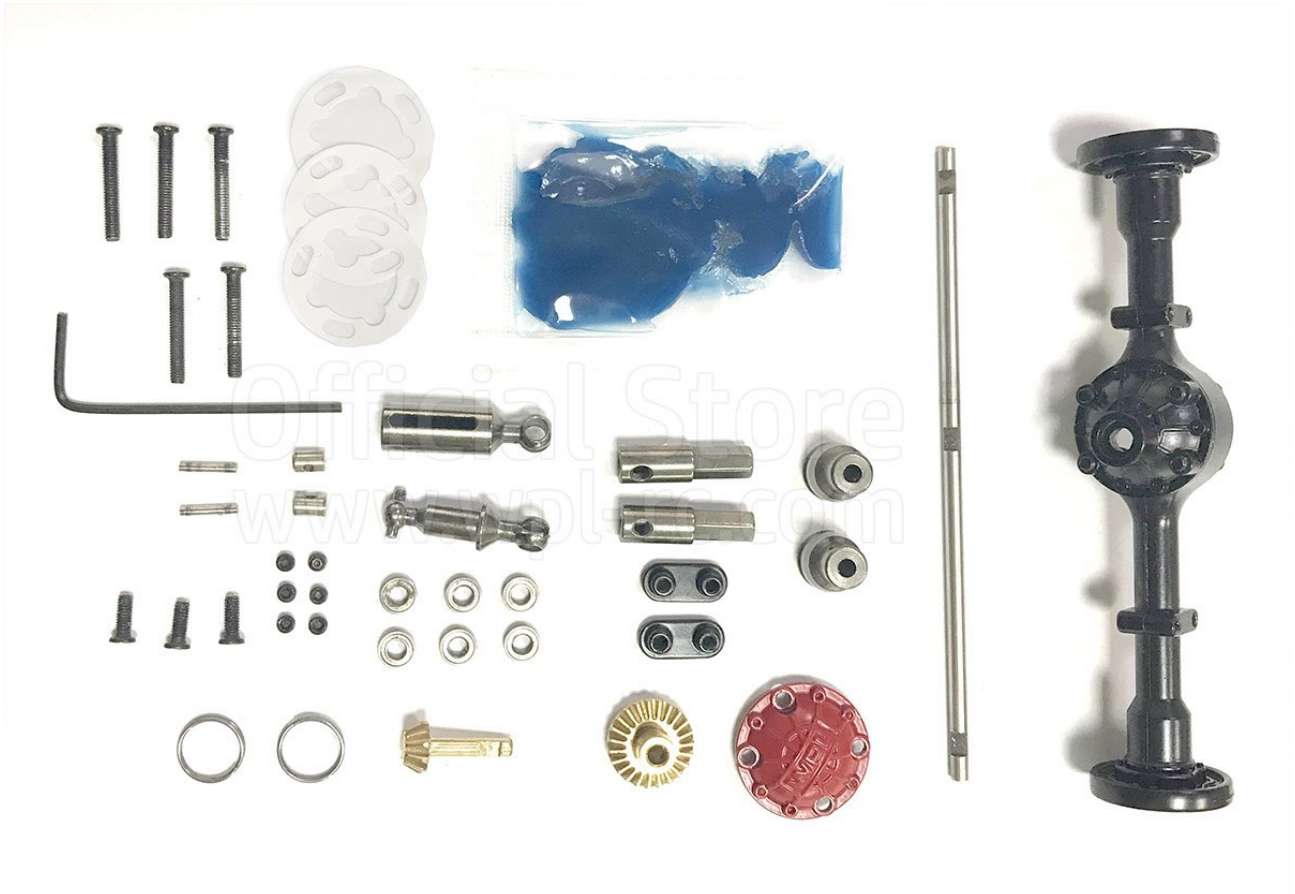


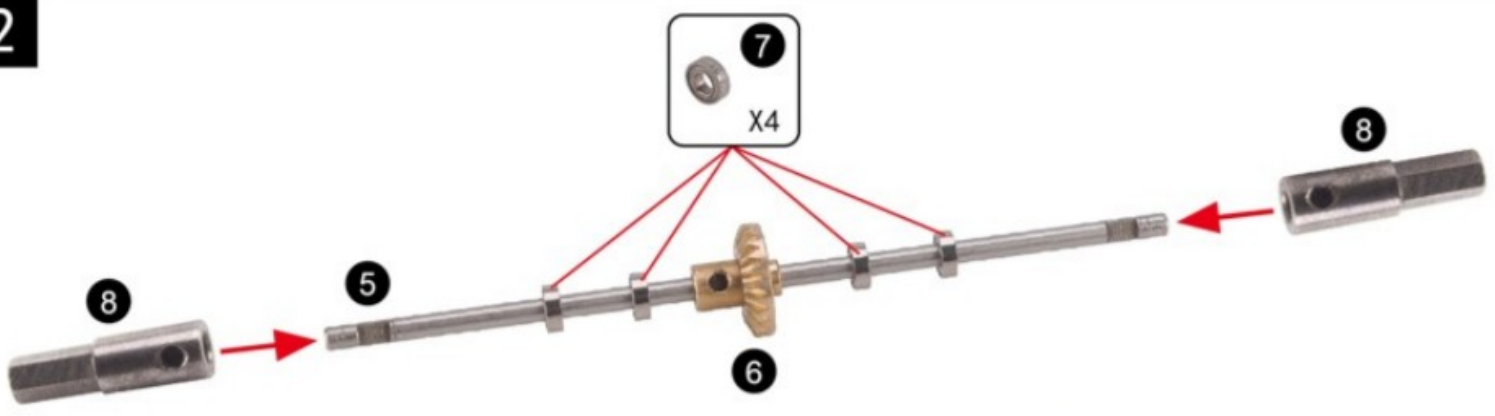
**There is no Official Instruction Manual specifically for
“D12 Rear Axle Metal Upgrade”**

**Below is a build instruction extracted from D12-KM which may contain
other parts not included in your “D12 Rear Axle Metal Upgrade”**

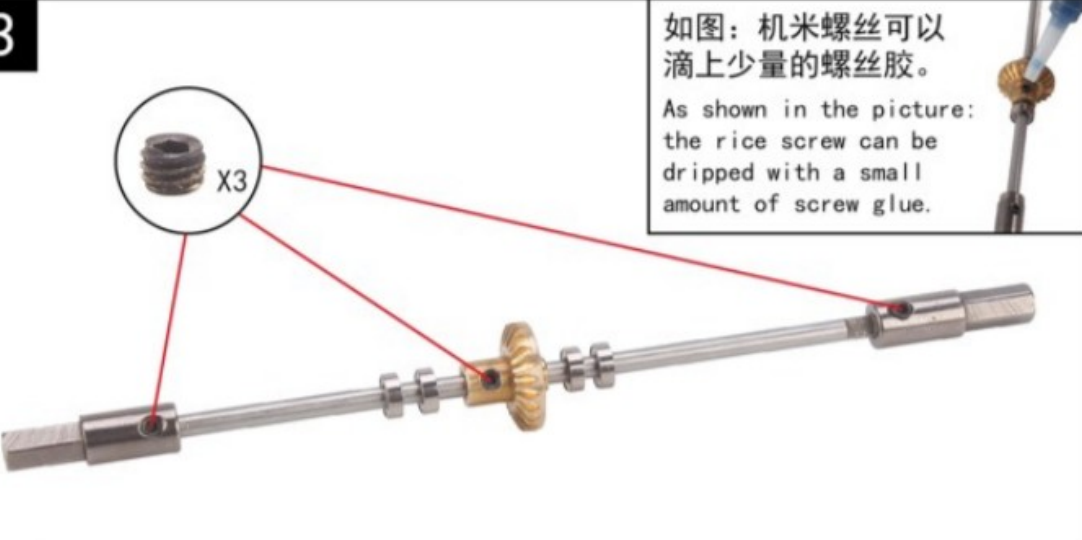


For accuracy, above photo shown parts contained in the
“D12 Rear Axle Metal Upgrade” pack.

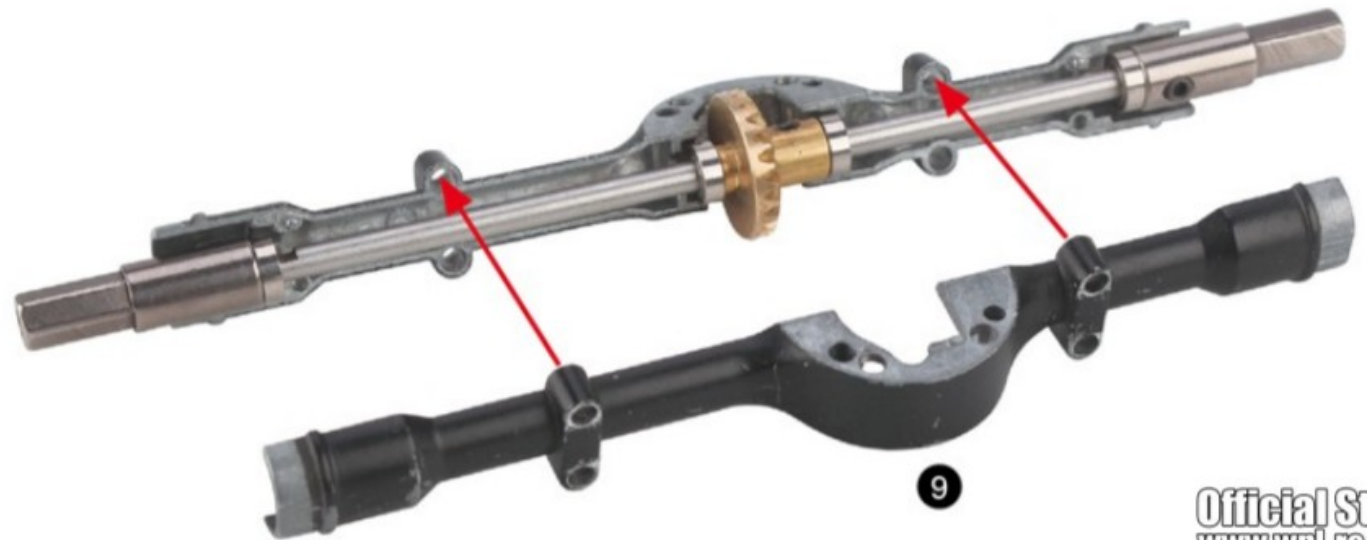
2



3

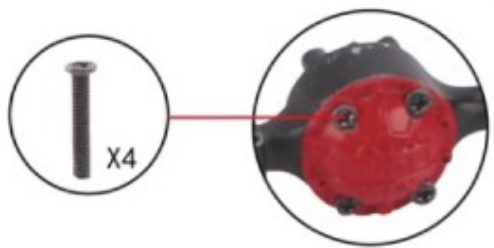


4

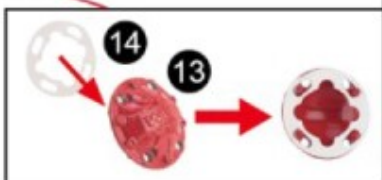


5

如图：齿轮
可以滴上一
些润滑油。
As shown,
apply grease
on the ring
gear



使用工具把螺丝拧紧
Tighten the 4 screws



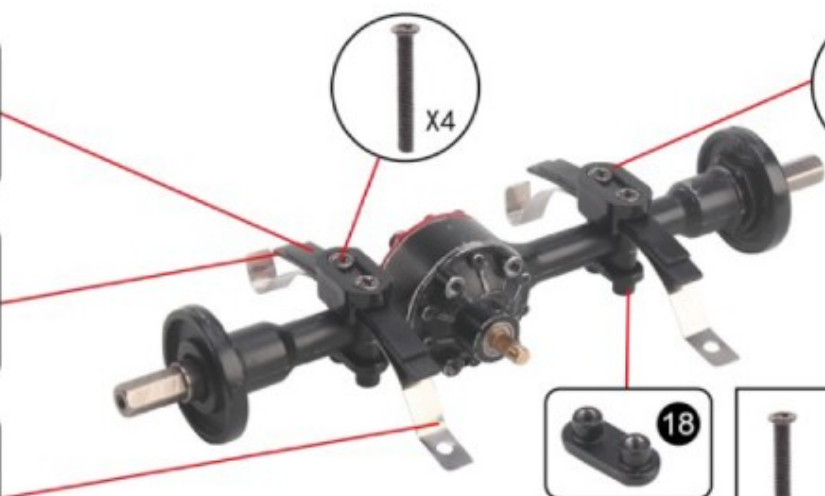
2.5x14
桥盖螺丝
Screws for
Axle cover
1:1实物参照图
1:1 scale reference

6

17
塑料减震片 (短)
Plastic Leaf Spring
(Short)

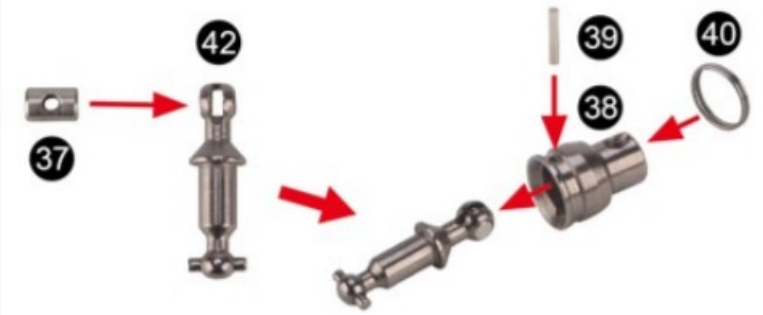
16
塑料减震片 (长)
Plastic Leaf Spring
(Long)

15
金属弹簧片
Steel Leaf Spring



2.5x17
后桥固定减震片螺丝
Screws for Rear
Leaf Spring
1:1实物参照图
1:1 scale reference

13



Official Store
www.wpl-rc.com

14



2.3x6x5
黑色螺丝
Black screw
1:1实物参照图
1:1 scale reference