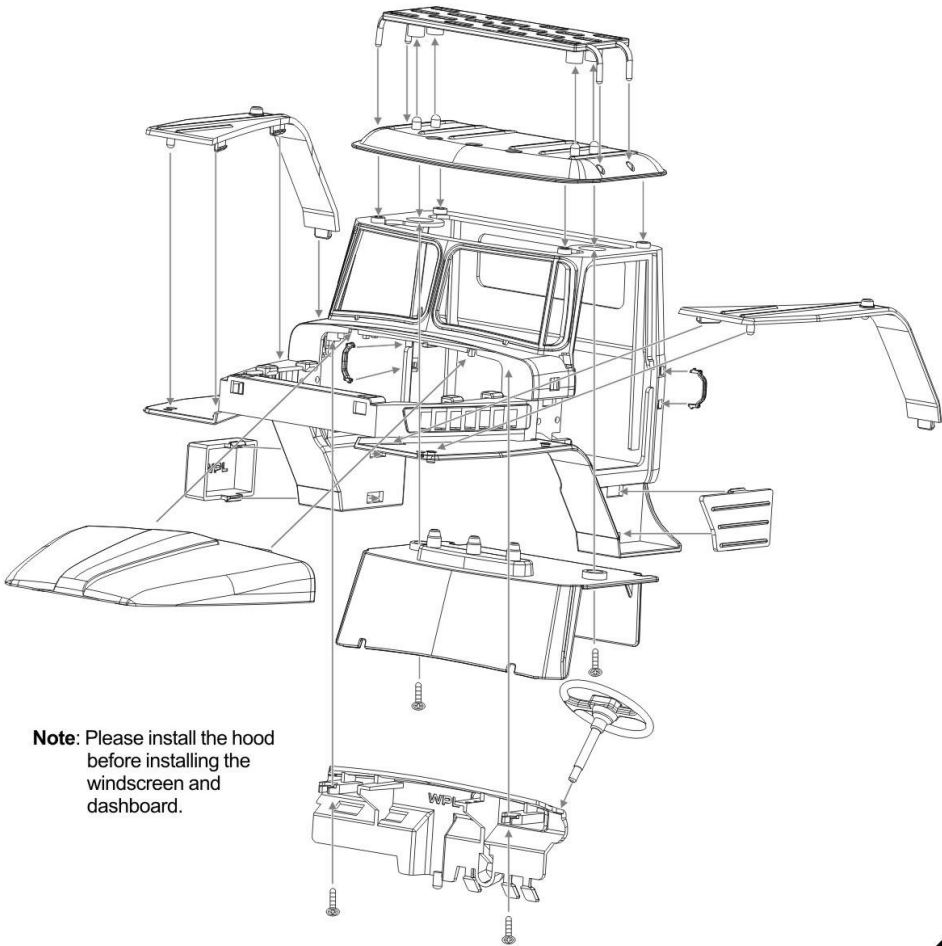
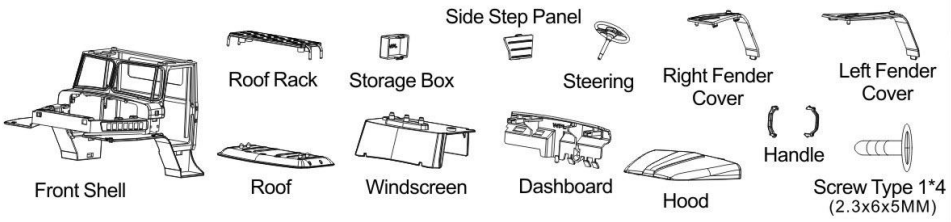
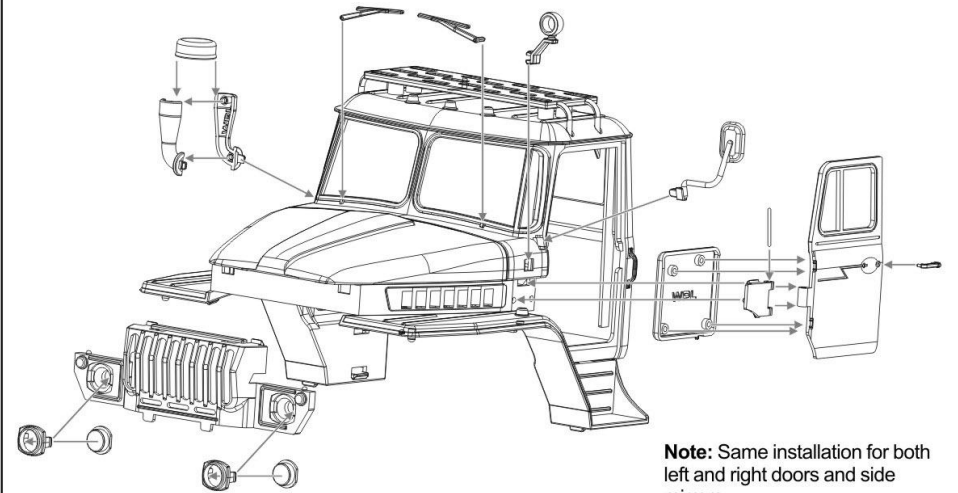
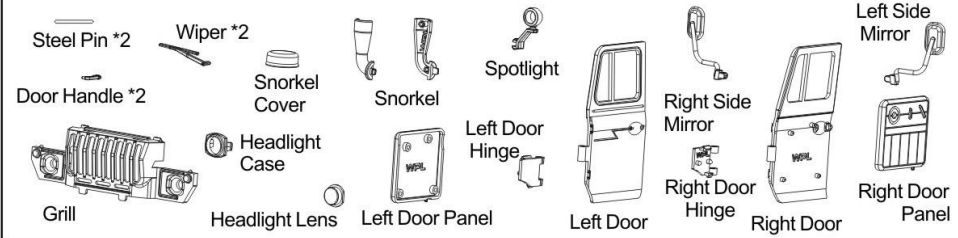


Front Cabin Installation



Note: Please install the hood before installing the windscreen and dashboard.

Front Cabin Installation



Note: Same installation for both left and right doors and side mirrors.

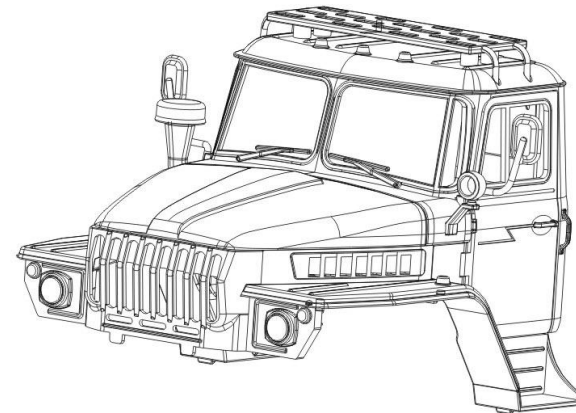
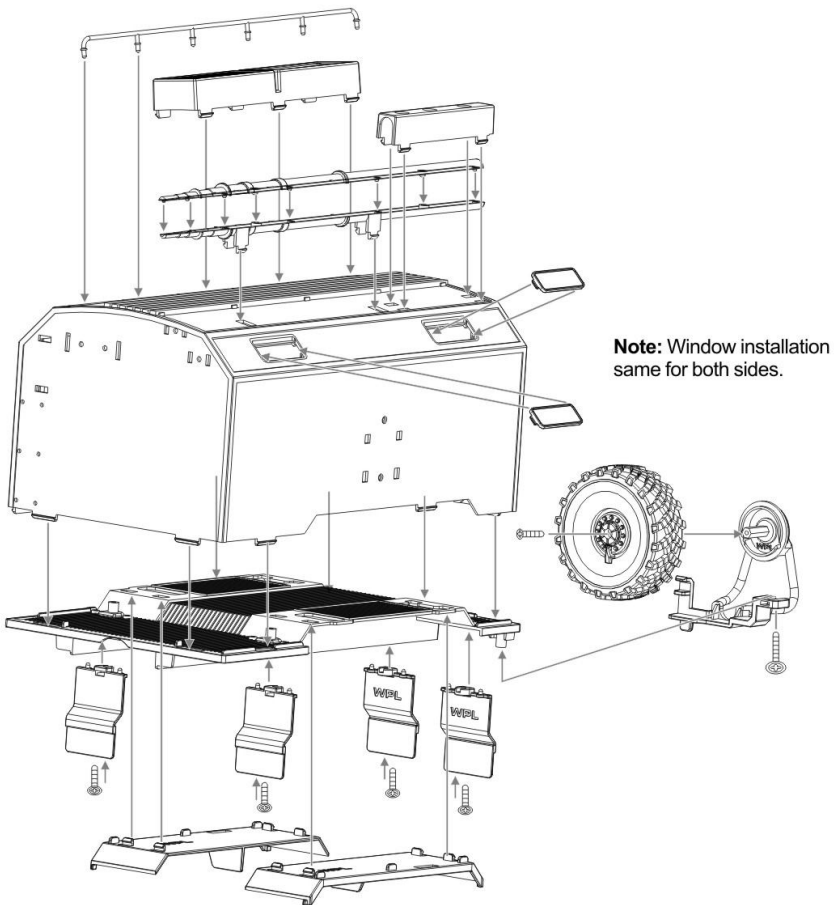
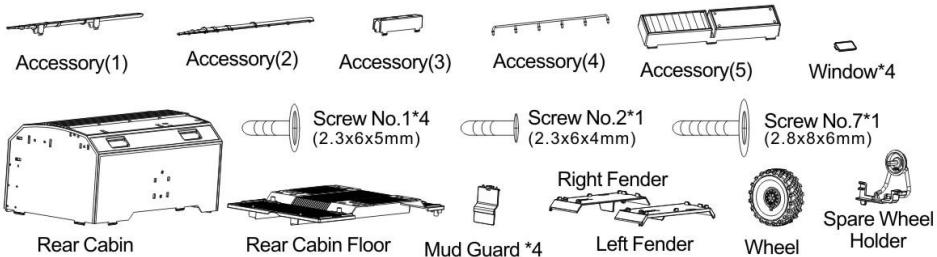


Illustration of completed front body part

**Rear Cabin Installation**



**Rear Cabin Installation**

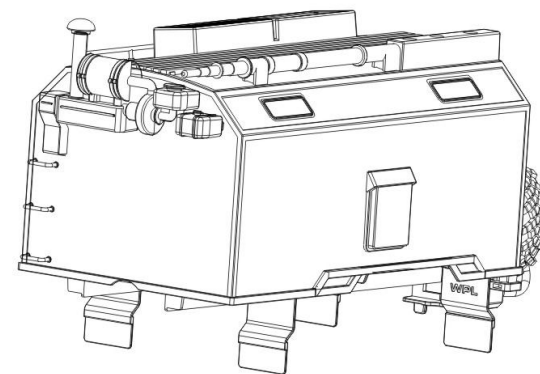
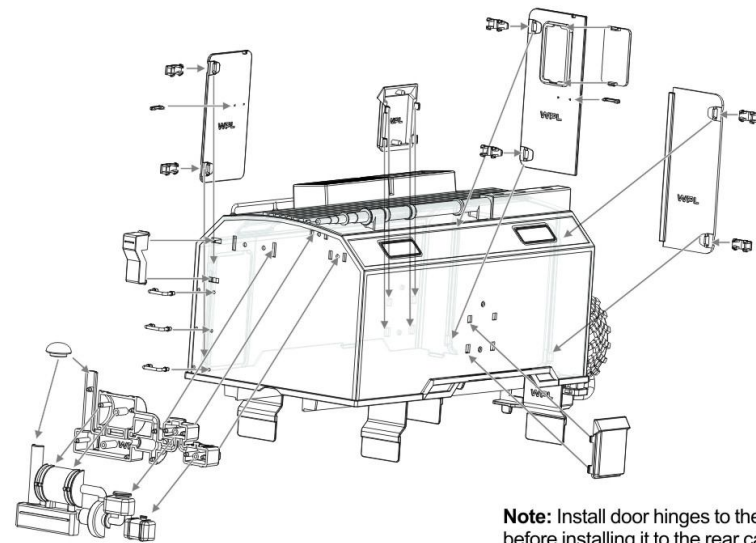
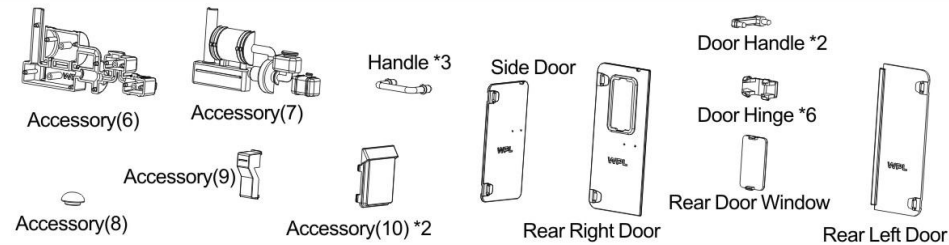
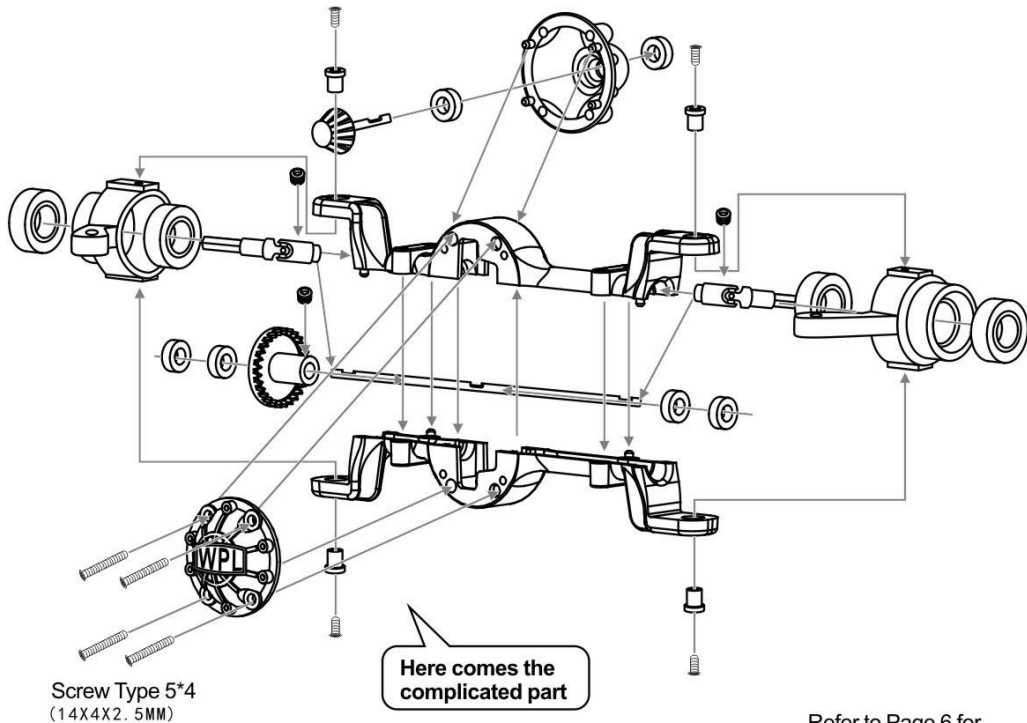
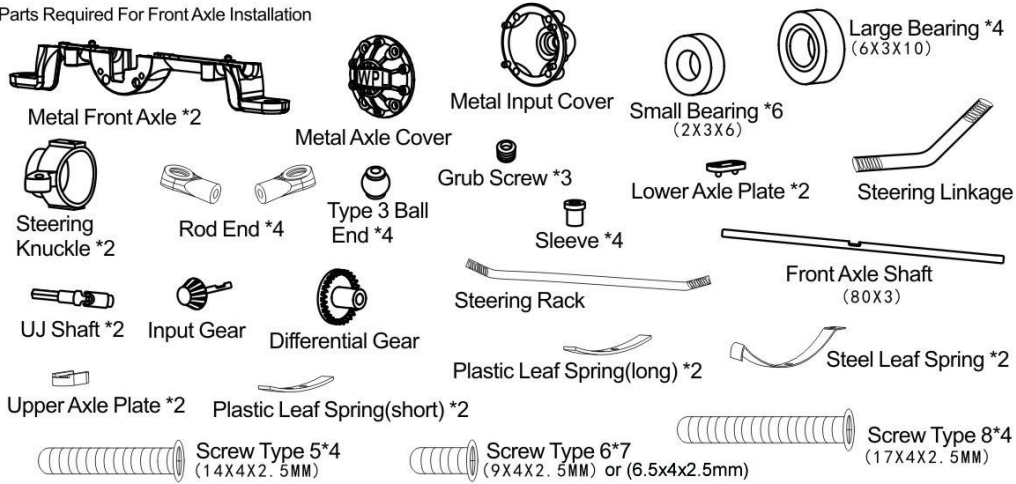


Illustration of completed rear cabin

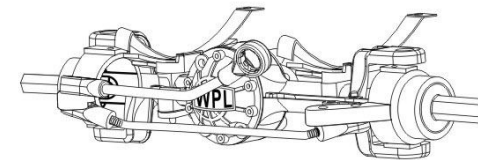
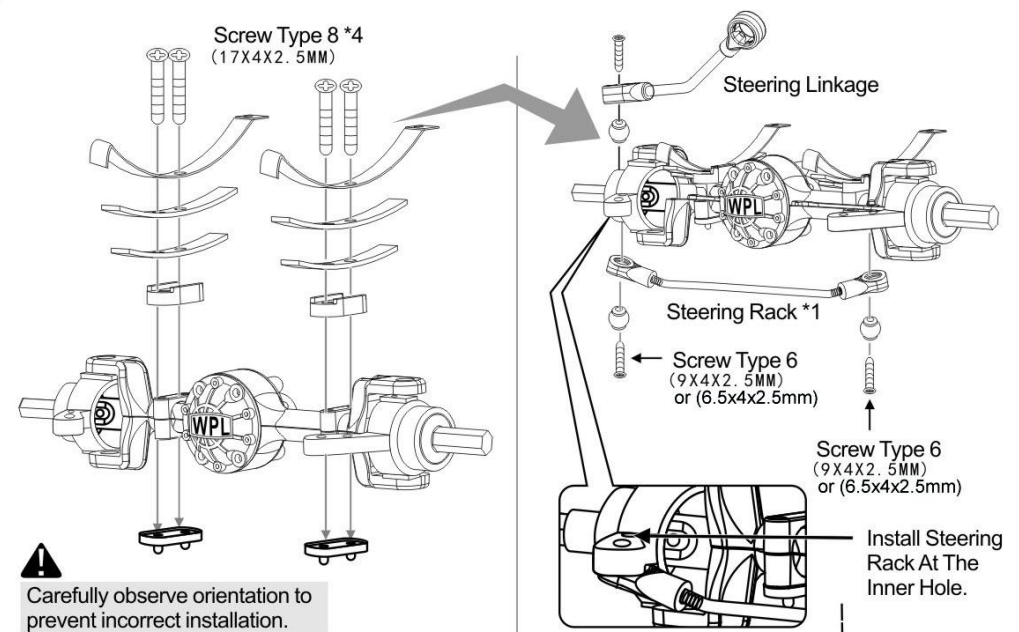
**Front Axle Installation**

Parts Required For Front Axle Installation



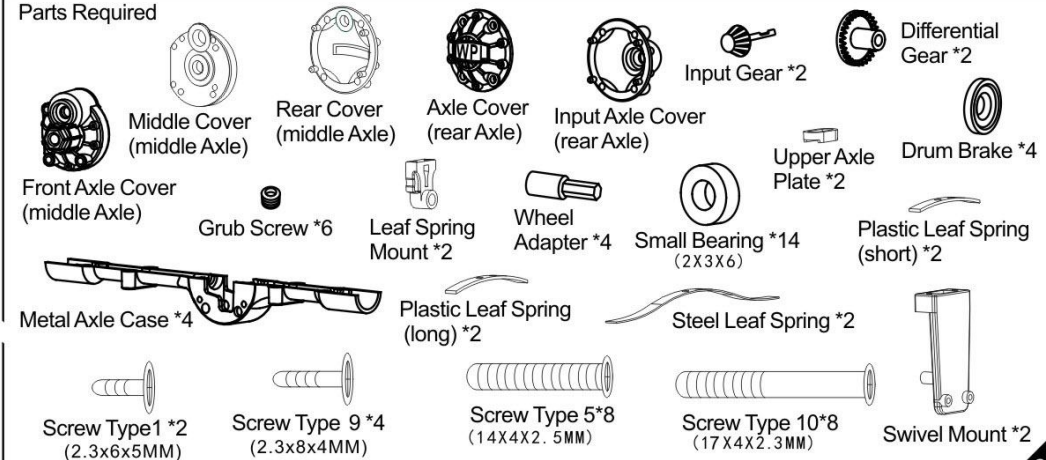
Refer to Page 6 for completed assembly

**Front Axle Installation**



**Middle Axle Installation**

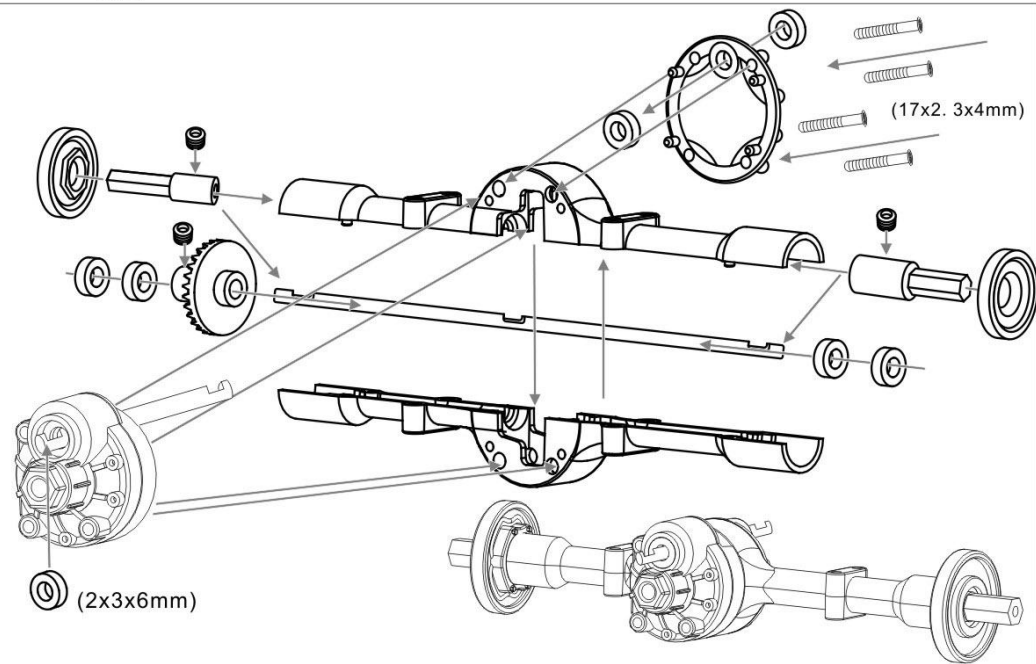
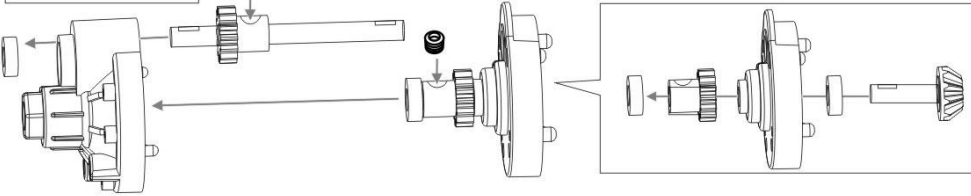
Parts Required



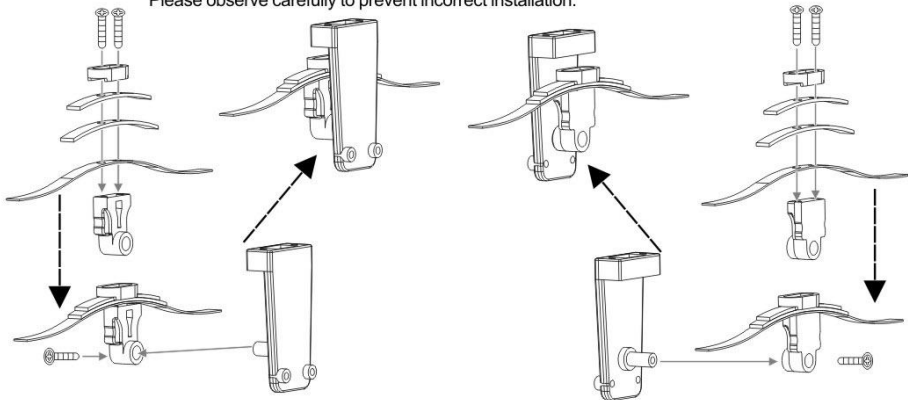
**Middle Axle Installation**

**Note:** Careful not to over-tighten grub screw here

**Installation Method**

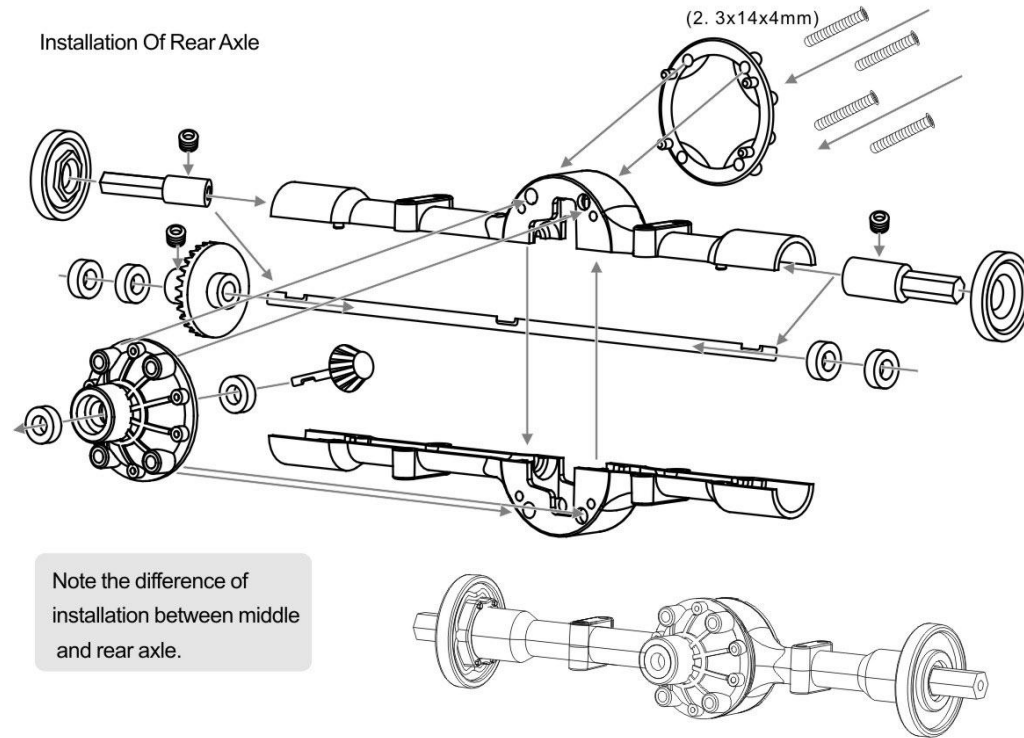


**Note:** There are different material such as plastic and metal, front and rear difference. Please observe carefully to prevent incorrect installation.



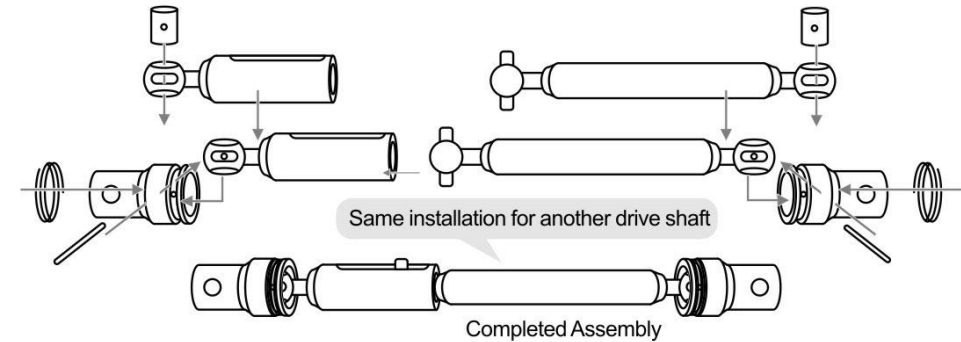
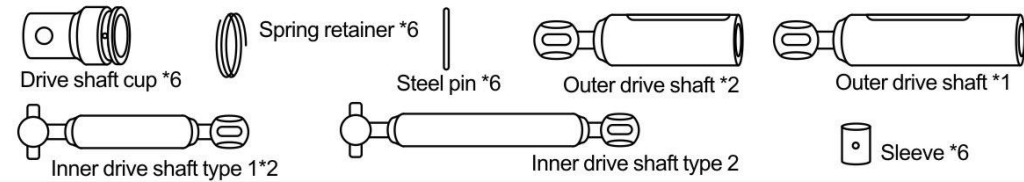
**Rear Axle Installation**

**Installation Of Rear Axle**



**Note:** the difference of installation between middle and rear axle.

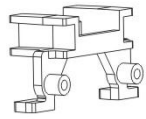
**Drive Shaft Installation**



Same installation for another drive shaft

Completed Assembly

**Middle Axle Installation**



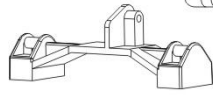
Axle Bridge



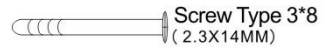
Link Rod \*6



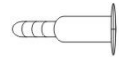
Link Rod Plate \*4



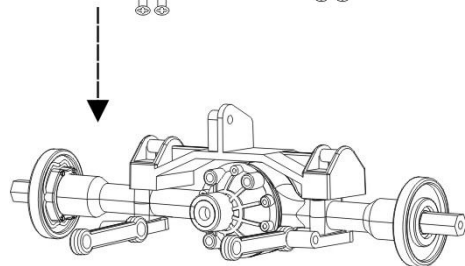
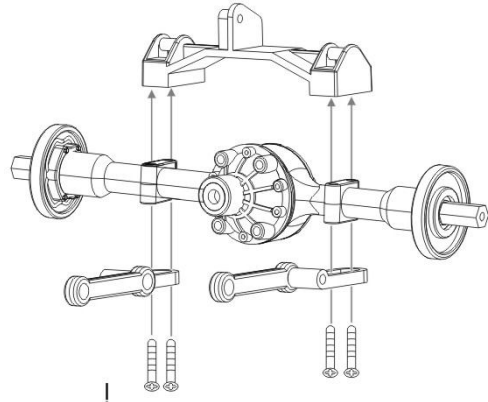
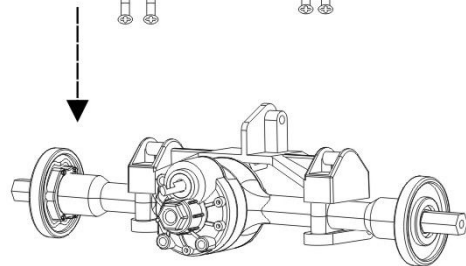
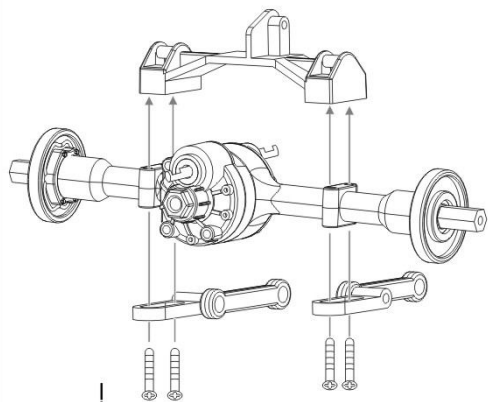
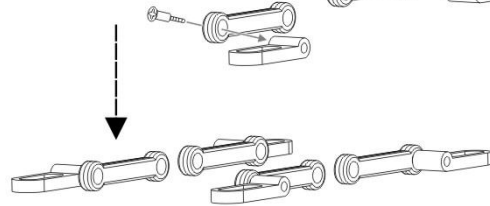
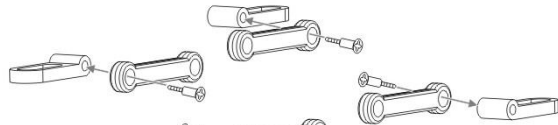
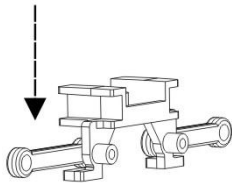
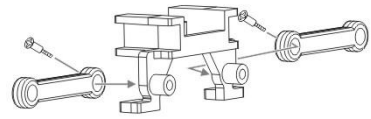
Axle Truss \*2



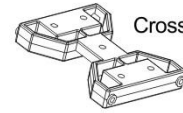
Screw Type 3\*8  
(2.3x14MM)



Screw Type 11\*6  
(3x9x4MM)



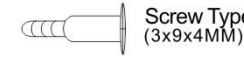
**Middle Axle Installation**



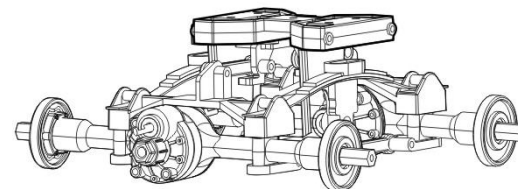
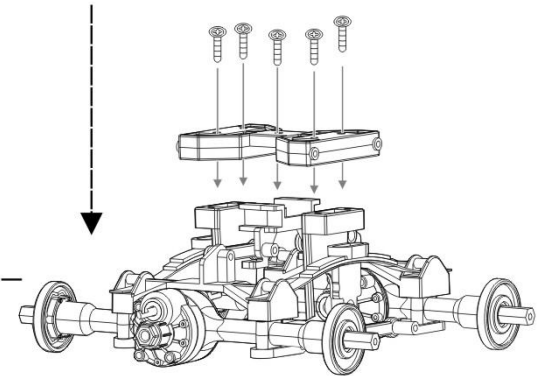
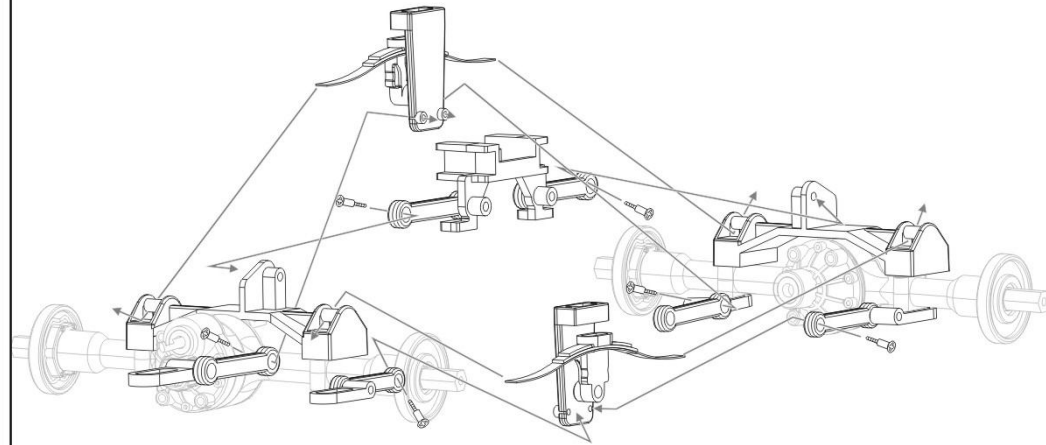
Cross Member



Screw Type 1\*6  
(2.3x6x5MM)

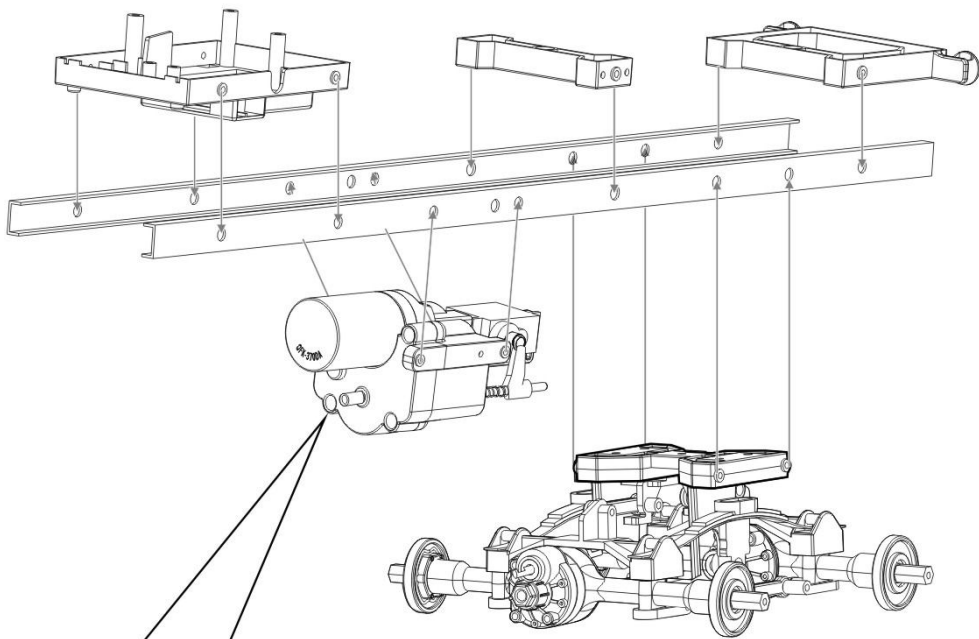
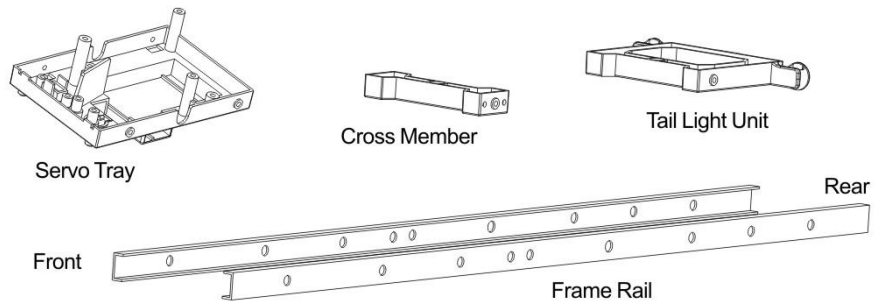


Screw Type 11\*6  
(3x9x4MM)



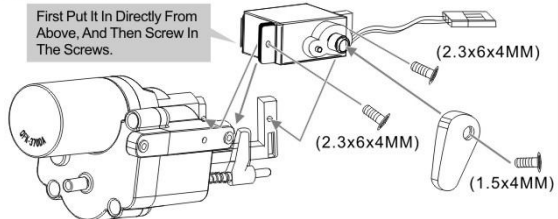
Completed Assembly

Chassis Installation



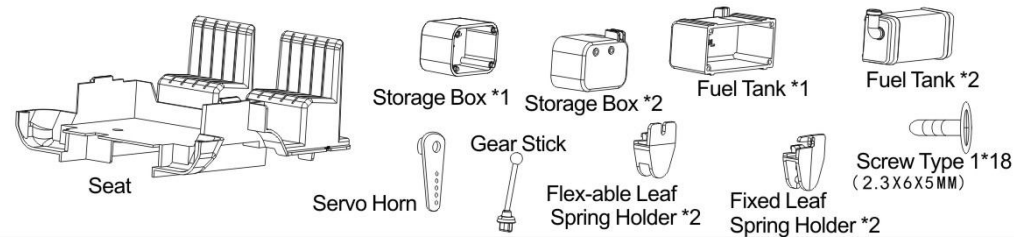
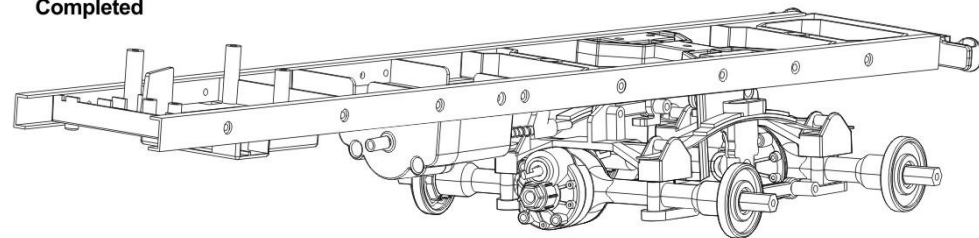
Motor Installation

First Put It In Directly From Above, And Then Screw In The Screws.

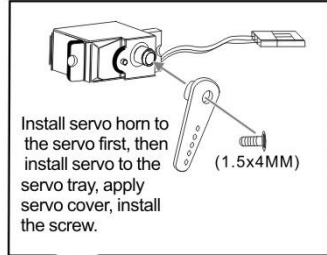
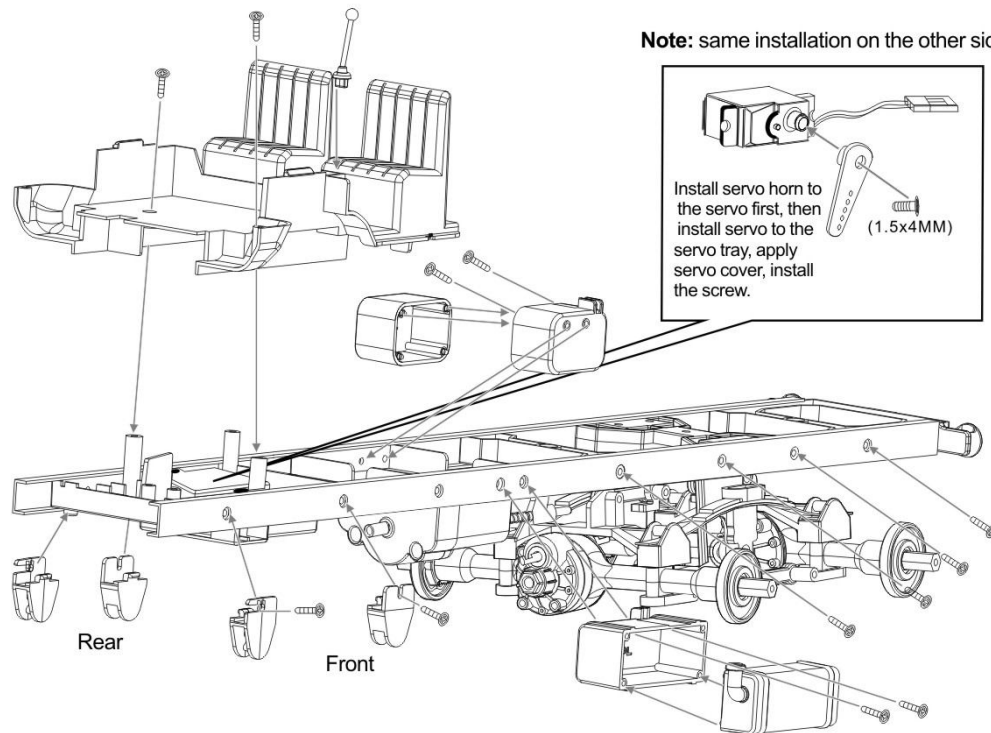


Chassis Installation

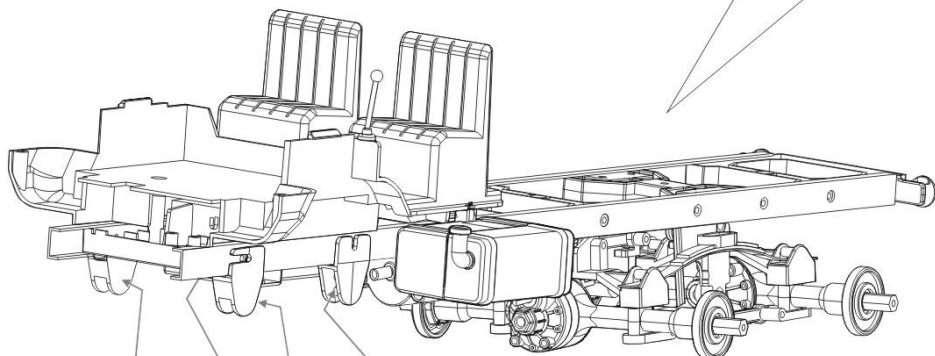
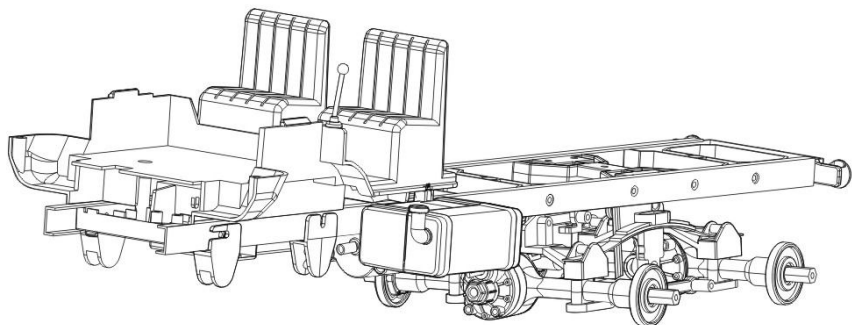
Completed



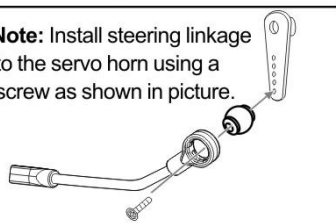
Note: same installation on the other side.



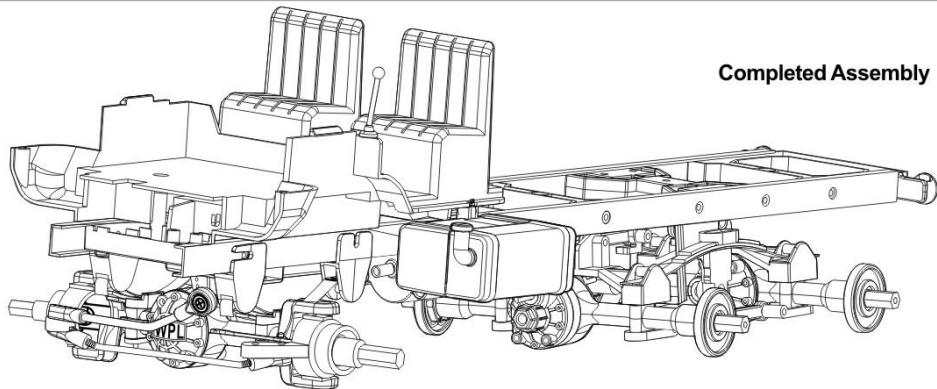
Chassis Installation



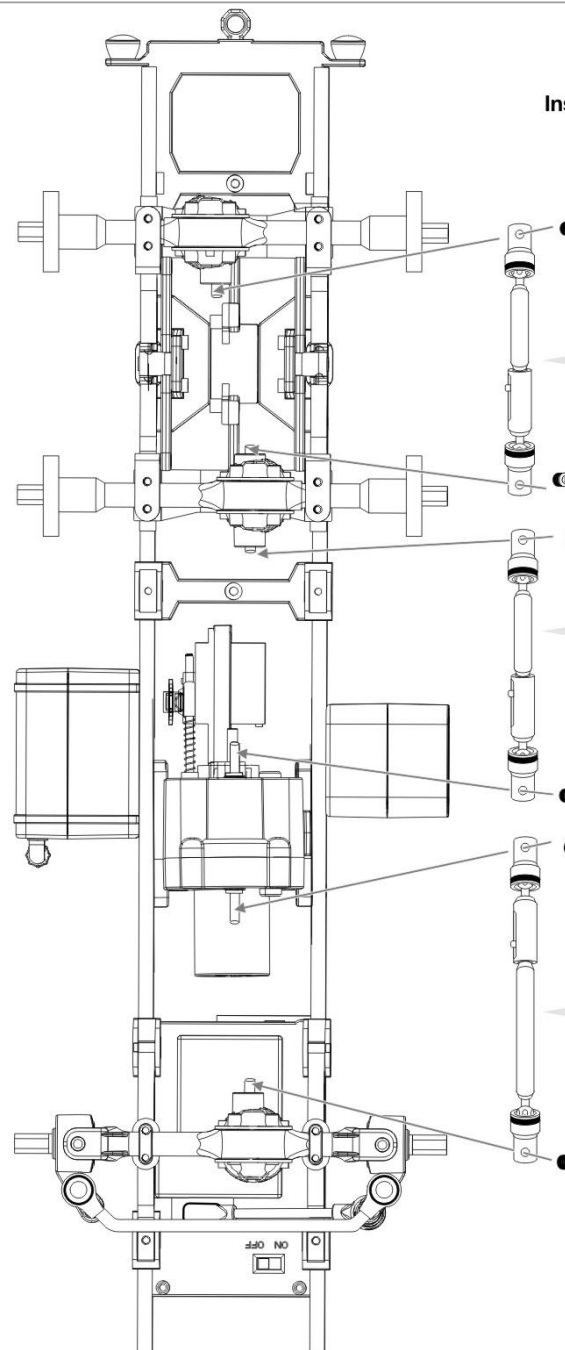
**Note:** Install steering linkage to the servo horn using a screw as shown in picture.



Completed Assembly



Chassis Installation



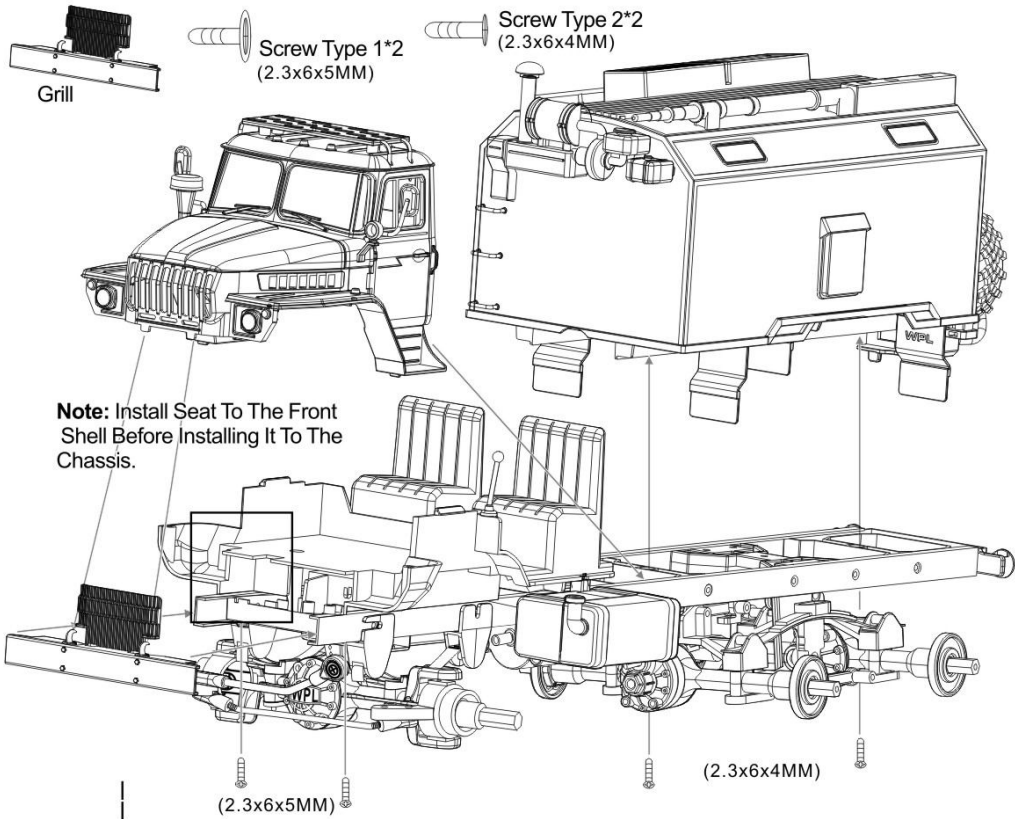
Instal drive shaft as shown

Type 1 Drive Shaft

Type 1 Drive Shaft

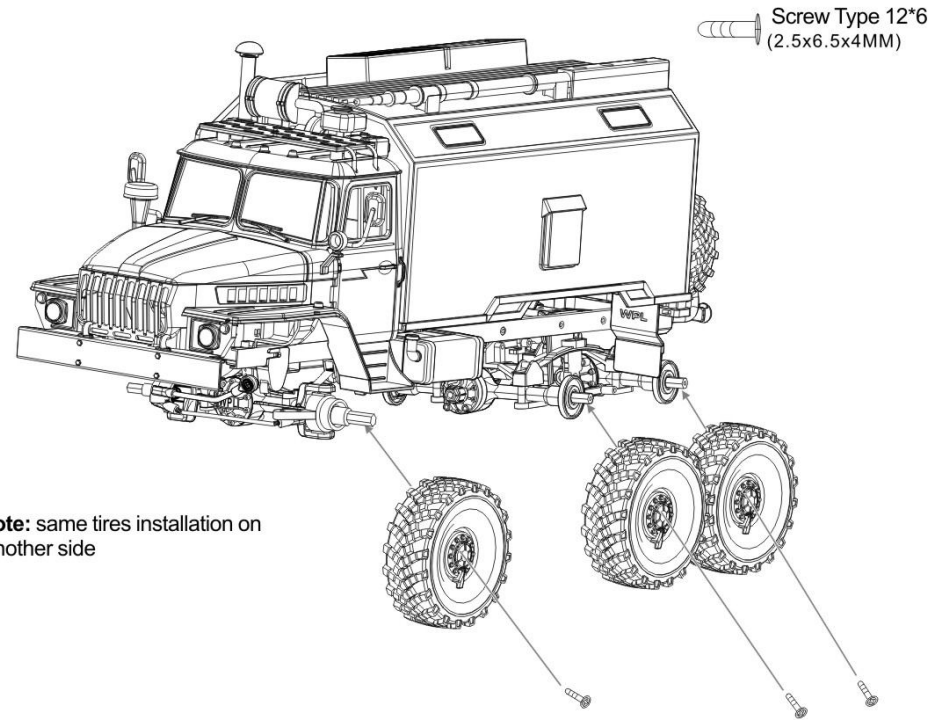
Type 2 Drive Shaft

Installation of each parts

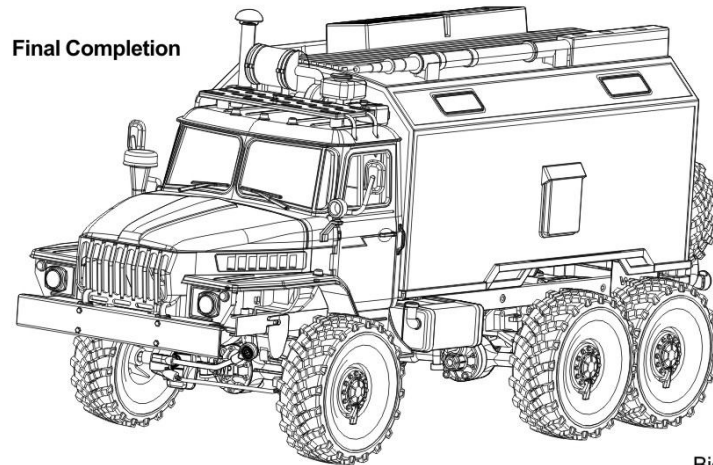


Completed

Installation of each parts



Final Completion



Big thank you for purchasing WPL RC products. love you! muakkkz