

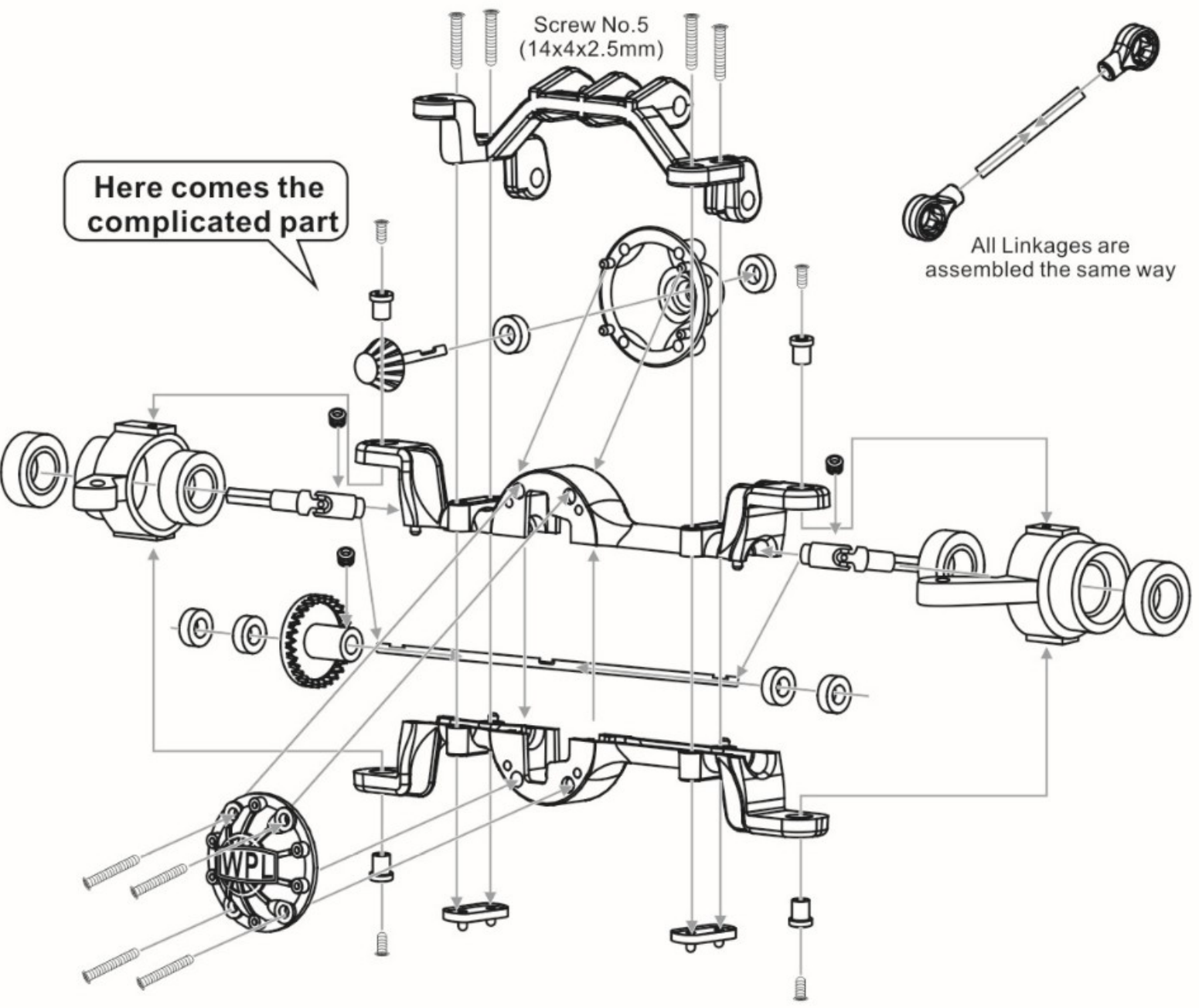
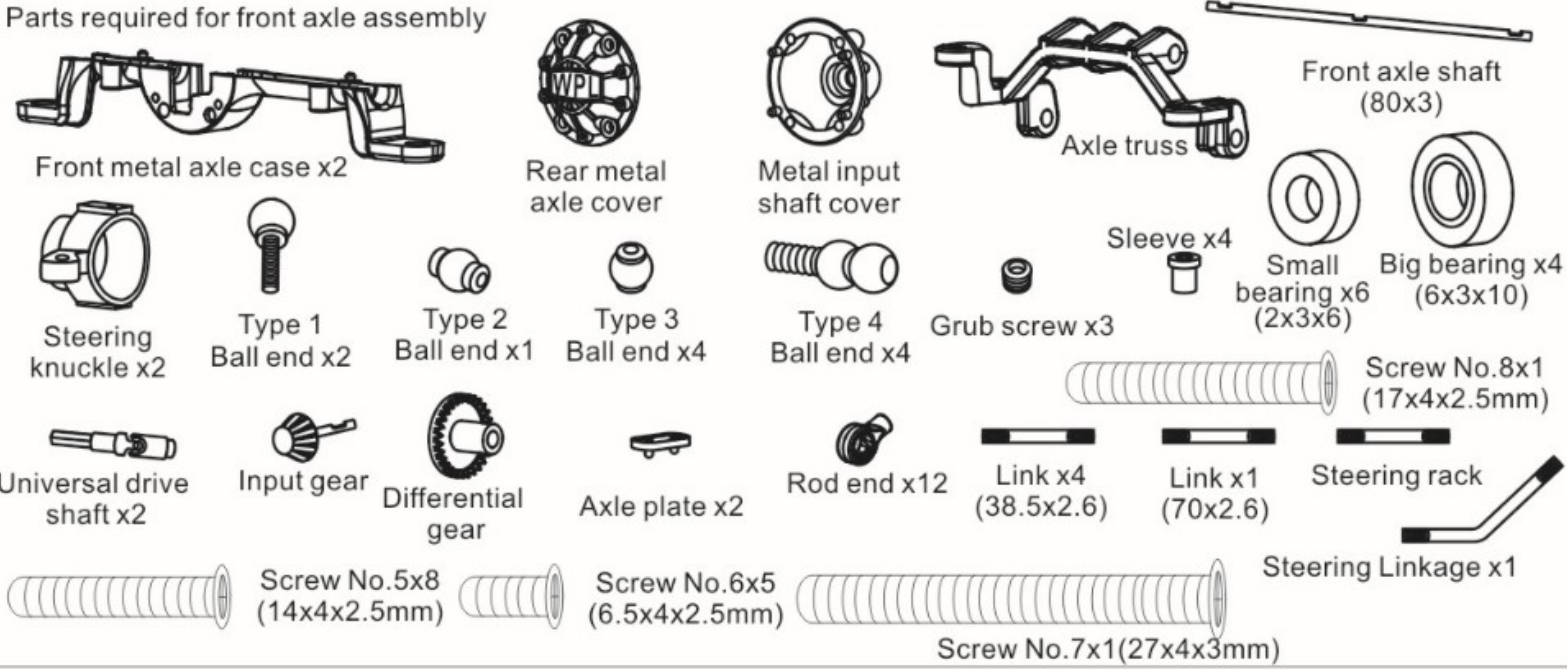
Note : Below manual pulled from the C44KM instruction manual.

The manual contains details and parts not physically included in the 4x4 metal upgrade.

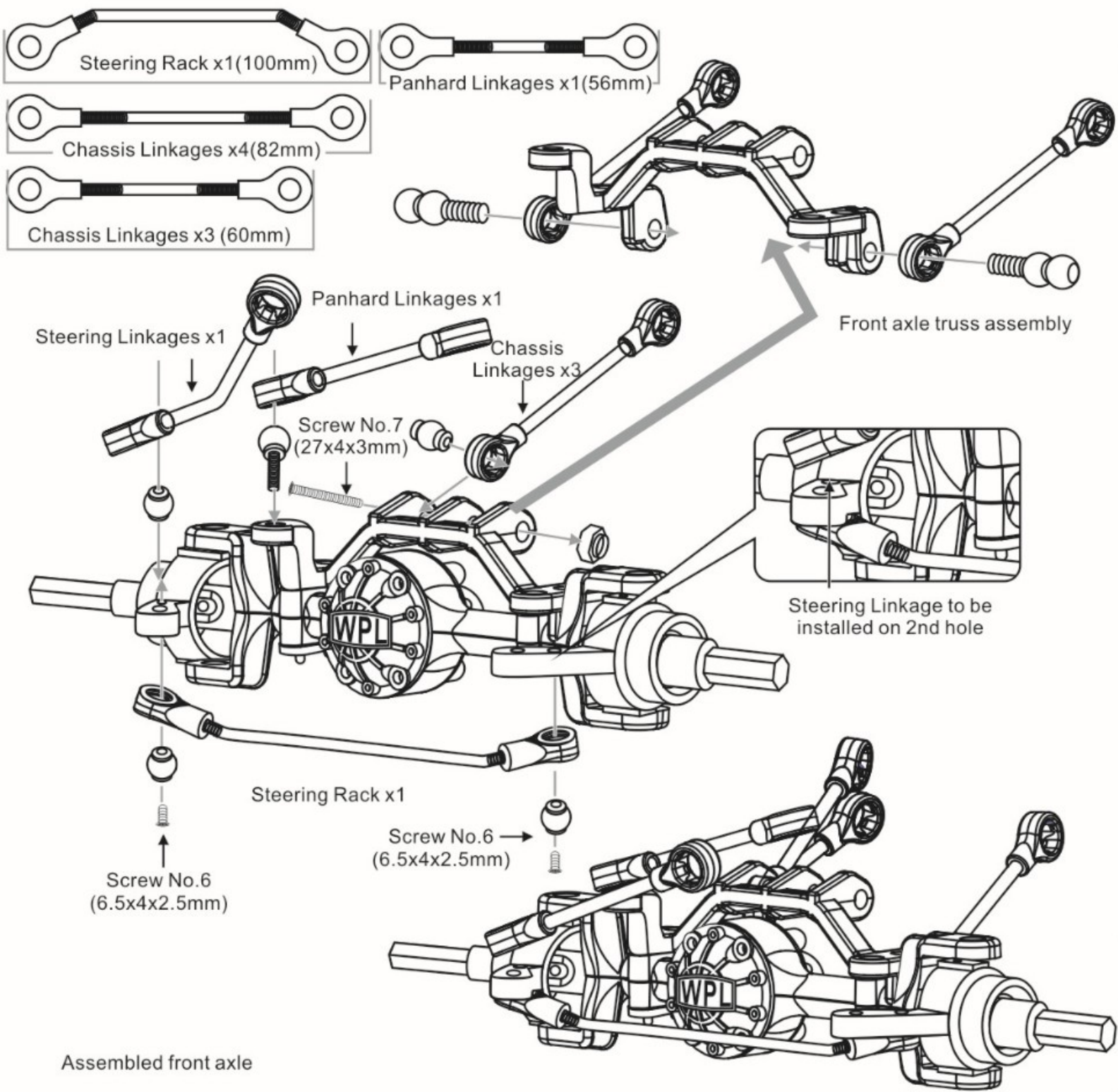
Refer to the 4x4 Metal Upgrade product page for reference on what's included.

# Front & Rear Axle Assembly Instruction

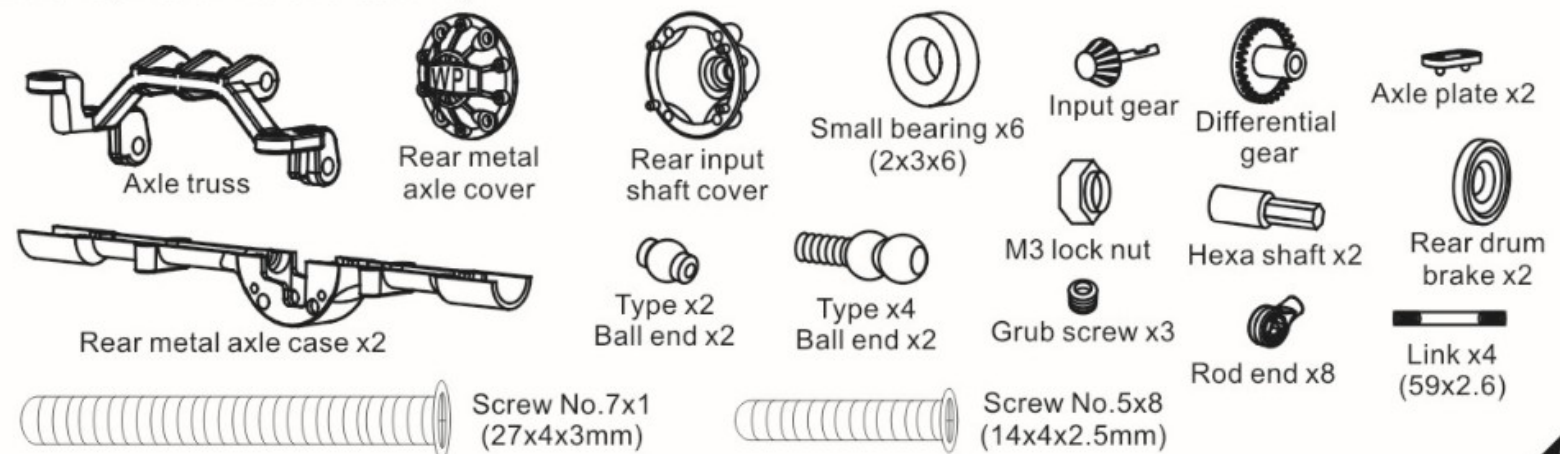
## Parts required for front axle assembly



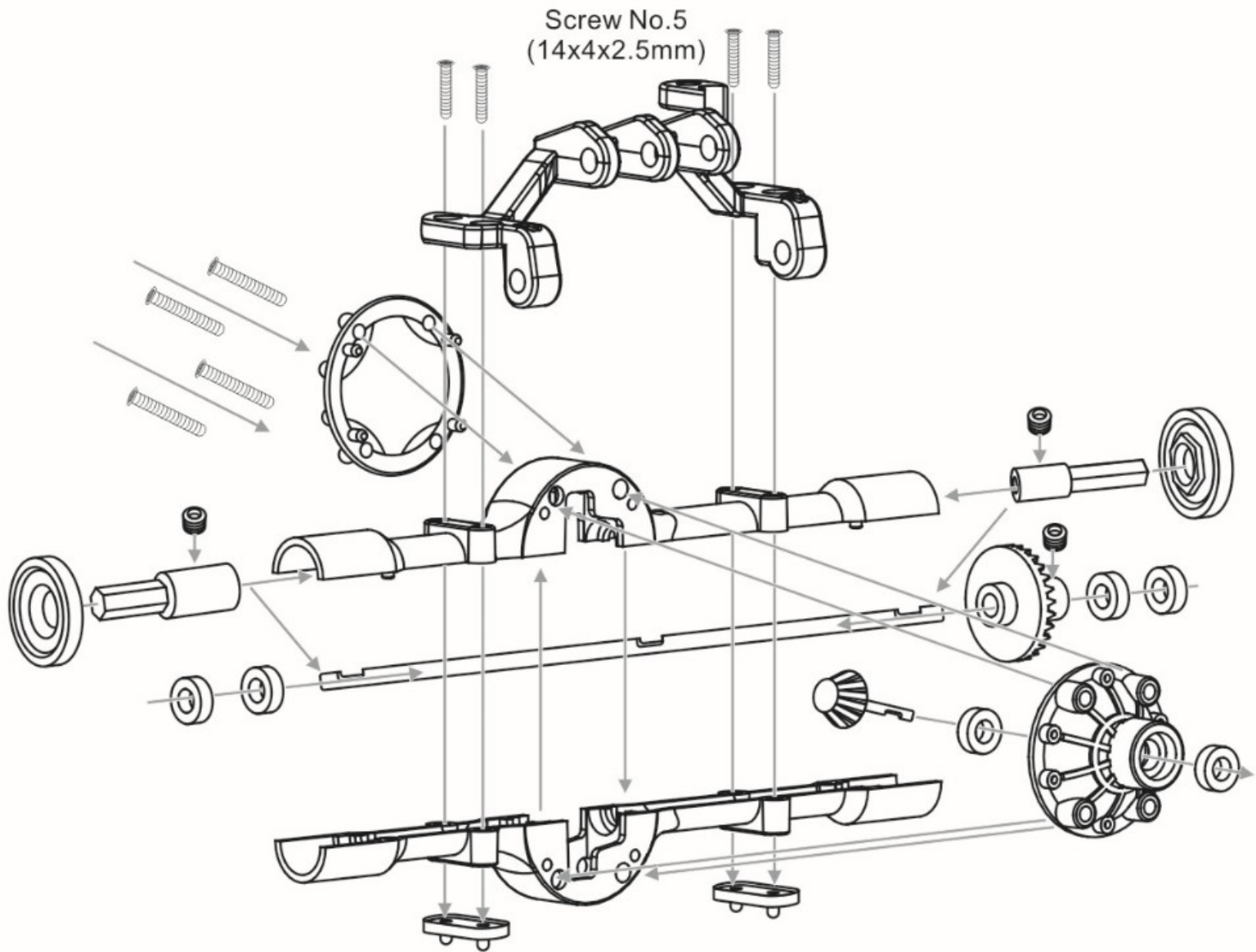
# Front & Rear Axle Assembly Instruction



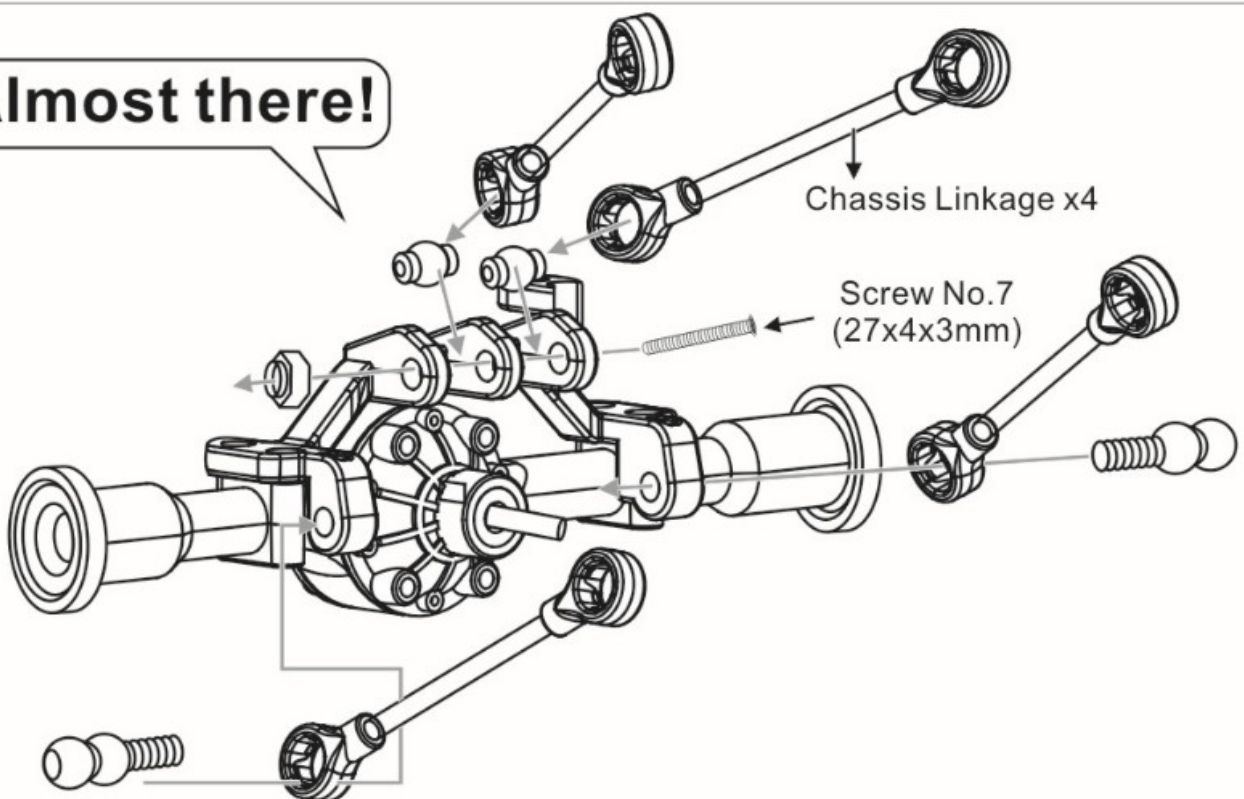
## Parts required for rear axle assembly



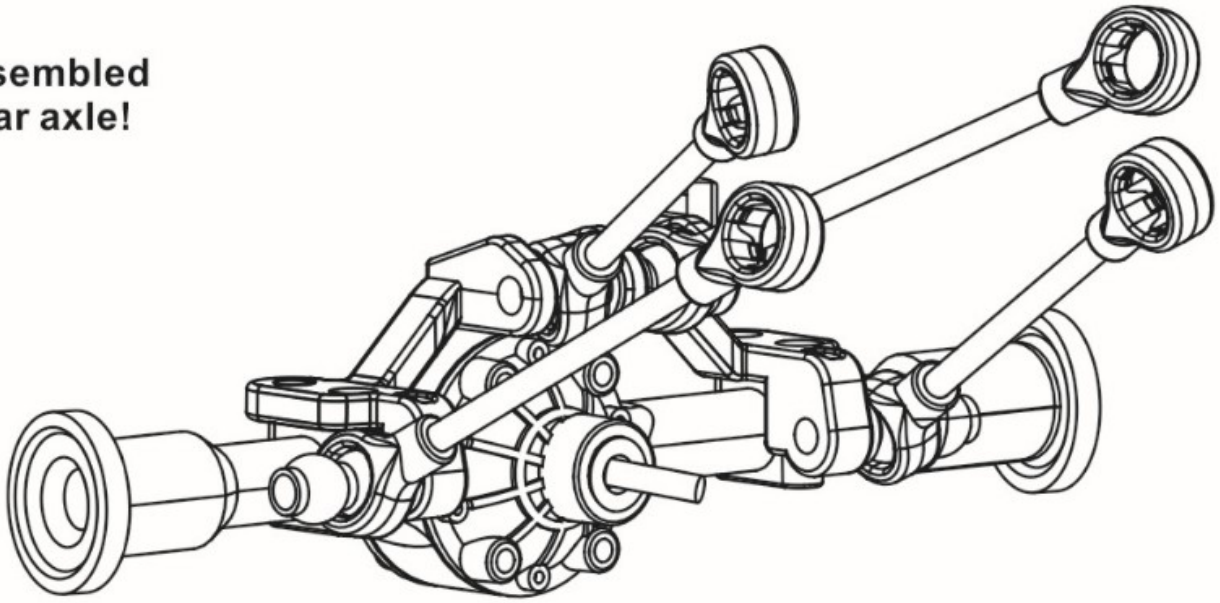
# Front & Rear Axle Assembly Instruction



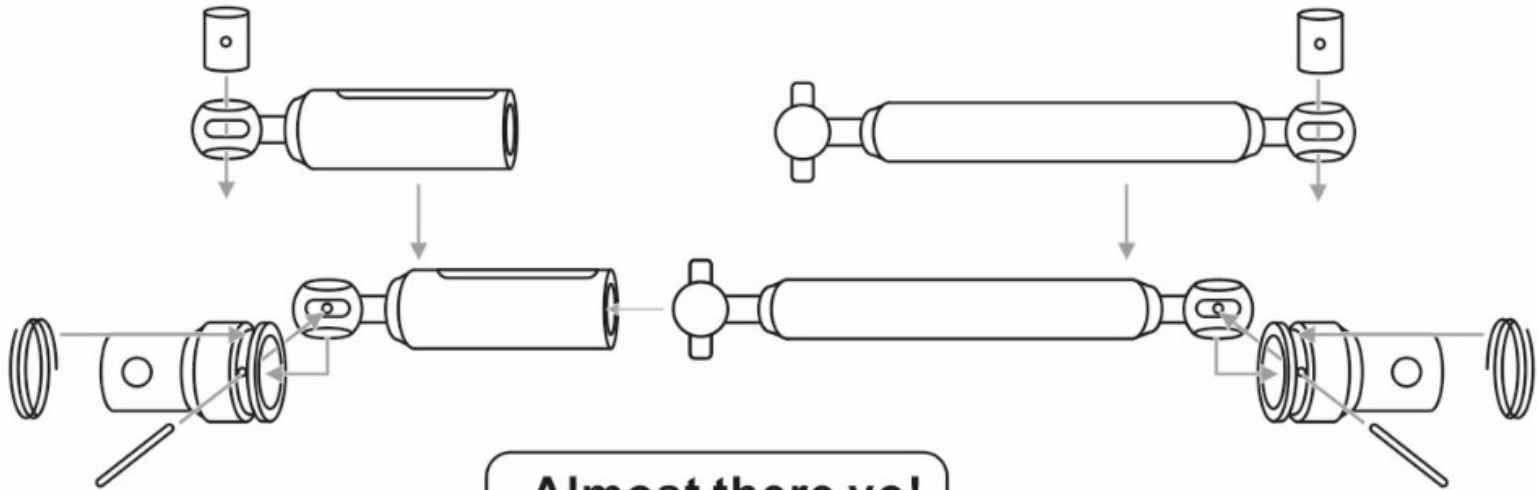
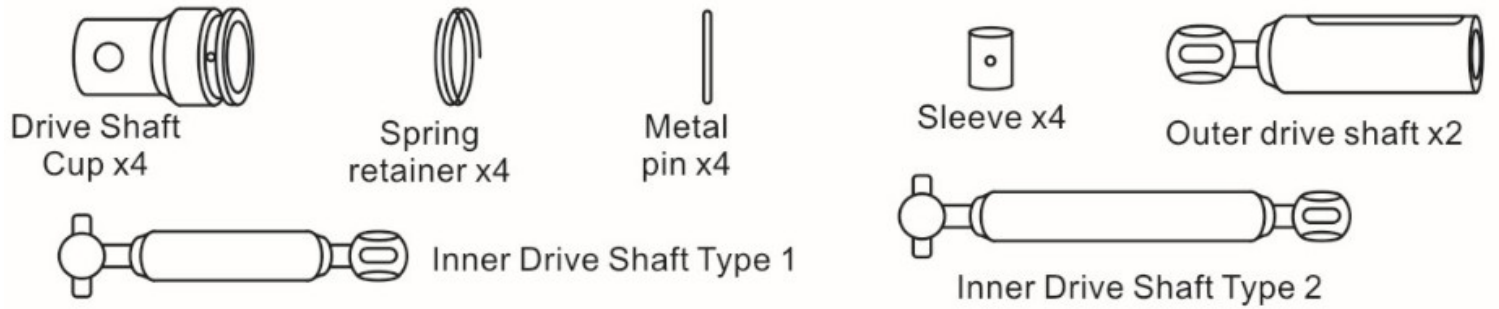
**Almost there!**



**Assembled rear axle!**

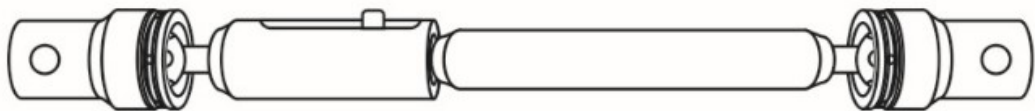


### Drive Shaft Assembly



**Almost there yo!**

Same assembly method applies to another identical drive shaft



**Assembled drive shaft**