



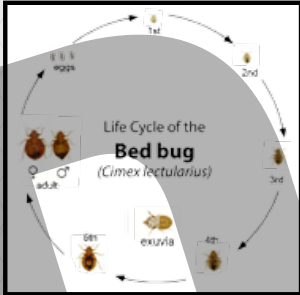
# TEMPLATE PROOF BACK

## INSIDE FOLD

### ARE THEY BED BUGS?



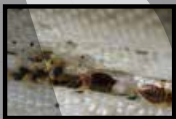
Bed bugs are small, wingless insects that grow to approximately 8mm in length. Bed bugs are parasitic and will look for a blood meal every 1-3 days. Although they thrive when meals are readily available, they have been known to go 80-140 days without feeding. After feeding the insects body becomes enlarged and turns red. Bed bugs lay between 1-12 eggs per day. These eggs are nearly clear and extremely small.



During a thorough search of a room or structure bed bugs can be identified by various signs.

#### Some of the most easily spotted signs are:

- Small brown or reddish spots on linens or mattress cover. The spots could be either droppings or blood spots from feeding.
- Small cast skin shells (called the excuvia) can be seen in the seams of furniture and hidden crevices.
- Bed bug bites can be identified on victims that describe red, swollen, itchy welts. These bites are usually found in groups of 3 and could be mistaken for mosquito bites.



Arizona's Premier Certified Bed Bug Heat Equipment Rental Company



Schedule Your Rental At:

[www.RentBedBugHeaters.com](http://www.RentBedBugHeaters.com)

877-445-2847

INFO@AZEXPEST.COM

[www.azexpest.com/rent-bed-bug-heaters/](http://www.azexpest.com/rent-bed-bug-heaters/)

AZEX Pest Solutions – Phoenix, AZ  
5230 W. Luke Ave., Suite F-1  
Glendale, AZ 85301  
MAIN: (602) 535-2151



Arizona Structural Pest License Number 8647



## FRONT

Arizona's Premier Certified Bed Bug Heat Equipment Rental Company



RENTALS STARTING AS LOW AS  
**\$99/DAY**

CAN'T AFFORD A PROFESSIONAL BED BUG HEAT TREATMENT?

RENT THE SAME HEATERS THE PROS USE!

YOU COULD BE BED BUG FREE IN JUST 8 EASY STEPS



## INSIDE LEFT

### WHERE TO LOOK?



- Most bed bugs will be found near the head of the bed area.
- Start by inspecting the sheets, edges of mattress piping and box springs, frame and headboard.
- Check in, under and behind night stands and all pleats/piping of upholstered furniture.
- Check ceiling, crown molding, walls, fixtures, pictures, free standing lamps, drapes and carpet edges.
- After the inspection be sure to check yourself and shoes for bugs or eggs. Have a change of clothes available if you suspect bugs are on your clothing after the inspection.

## INSIDE MIDDLE

### WHY HEAT?

Heat Treatments Are The Most Effective Way To Kill Bed Bugs

- Kills all life stages of bed bugs—adults, nymphs, and eggs with one treatment.
- Non-chemical, non-toxic approach penetrates wall cavities, mattresses and other hard to reach areas.
- No odor.
- Treated in 24 hours.
- No damage to contents in the infested room.
- Guaranteed success.

We offer you an environmentally friendly, non-toxic heat application that can be applied to specific areas as well as entire structures. Our treatment equipment works by generating clean, dry, heated air within an infested area by slowly raising temperatures to levels no bed bug can survive.

Temperatures in the range of 115-143°F for about one hour prove fatal to many of the pesticide resistant organisms that invade our buildings. If you're looking for a product that kills bed bugs, without exposing your family to dangerous chemicals, while not breaking the bank consider renting our systems today!

## INSIDE RIGHT

### WHY RENT?

Why spend thousands on exterminators when you can kill bed bugs yourself? With RentBedBugHeaters.com you can kill bed bugs and keep your business on track! We offer professional quality heaters, fast service, and all the information you need to perform professional quality heat treatments on your schedule.

- Don't wait for exterminators to work you into their busy schedule.
- Save money.
- Save time.
- Keep your business operational.
- Only treat the areas that need treatments.
- Easy and discreet!

### WHY US?

RentBedBugHeaters.com partners with some of the BEST equipment rental companies and pest professionals from around the country. All of our providers use Convectex heaters in their business, and now can offer you the same equipment to rent for extremely low daily rates.

With RentBedBugHeaters.com you can trust that you are receiving the best equipment and quality services! We offer fast service, pick-up and delivery (not available in all locations), and professional add-on services.

### HEAT RENTAL



ECO FRIENDLY



EFFECTIVE



AFFORDABLE



SAFE

VS.



LESS EFFECTIVE

### CHEMICAL TREATMENTS



POLLUTION



EXPENSIVE



HEALTH RISKS

WHICH WOULD YOU PREFER? START KILLING BED BUGS WITH HEAT TODAY!



CONVECTEX

# TEMPLATE PROOF

## BED BUG EARLY DETECTION GUIDE



### IDENTIFY

Adult bed bugs are reddish brown in color and are approximately 1/4 inch in length. The immature bed bug is pearl whitish in color and darkens as it reaches maturity. There are five immature stages before reaching the adult reproduction stage.

Bed bugs, scientifically known as Cimex lectularius (Hemiptera: Cimicidae) are small insects that are flattened dorsally.

### SIGNS

Finding early signs of bed bugs will help to avoid costly treatments for infestations later!

Live bed bugs in any growth stage • Eggs laid in clusters by a sticky substance • Fecal Stains appear like a small dark ink spot Castings (shed skins) • Blood spots or smears • Peculiar odor (in serious infestations)



### WHERE TO LOOK

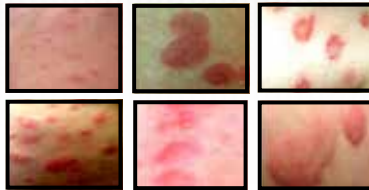
- Most bed bugs will be found near the head of the bed area.
- Start by inspecting the sheets, edges of mattress piping and box springs, frame and headboard.
- Check in, under and behind night stands and all pleats, piping of upholstered furniture.
- Check ceiling, crown molding, walls, fixtures, pictures, free standing lamps, drapes and carpet edges.



### BITES

A bed bug bite can resemble many other insect bites.

They can itch severely and cause extreme anxiety and sleeplessness.



EDUCATIONAL POSTERS

PRINTED ON 2 SIDES

11 X17

SPANISH & ENGLISH

## CHINCHES DE LAS CAMAS GUÍA DE DETECCIÓN



### IDENTIFICAR

La chinche de las camas inmadura es de color perla blanquecino y su color se va oscureciendo al llegar a la madurez.

Pasa por cinco edades antes de llegar a la edad adulta reproductora.

Las chinches adultas son de color marrón rojizo y miden aproximadamente 5 mm de longitud.

### CHINCHES EN LA CAMA

Se encuentran en grupos adheridos por una sustancia pegajosa que tienen la apariencia de exuvias oscuras. • Las exuvias de sus molts de sangre. • Chinches vivas en la cama. • Olor peculiar (en infestaciones)



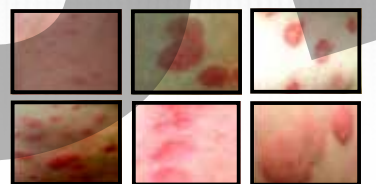
### DÓNDE BUSCAR

- Donde más chinches de las camas se encuentran es cerca de la cabecera de la cama.
- Iniciar la inspección en las sábanas, las costuras, el colchón, el somier y en el cabecero de la cama.
- Inspeccionar debajo y detrás de la mesita de noche y todos los pliegues y costuras de los muebles tapizados, el techo, molduras, paredes, cuadros, lámparas de pie, cortinas y los bordes de las alfombras.

### LAS PICADAS

Una picada de chinche puede parecerse a las picaduras de otros insectos.

Las picadas pueden causar insomnio y causar trastornos graves.



CONVECTEX

CONTACT US TODAY!  
1 (877) 375-0005  
WWW.CONVECTEX.COM



CONVECTEX

CONTACT US TODAY!  
1 (877) 375-0005  
WWW.CONVECTEX.COM





CONVECTEX

TEMPLATE PROOF

PLASTIC LIFECYCLE BUSINESS CARDS

PREMIUM PRODUCT

TRANSPARENT

RENTAL HEATER INSTRUCTION SHEETS

11 X 17

2 SIDED

**HAND DOES NOT PRINT**

Colors may vary.

**BED BUG ID CARD**

Life Cycle of the **Bed bug** (*Cimex lectularius*)

eggs, 1st, 2nd, 3rd, 4th, 5th, exuvia, adult

Actual Size

CONVECTEX  
Your Bed Bug Heat Store  
877-375-0005  
info@convectex.com  
www.convectex.com

CMYK WHITE UV COATING

**INSTRUCTIONS FOR ELITE 8 BED BUG HEATER**

USE AT YOUR OWN RISK!

**NOTE: Walls and ceilings made of block or concrete require more heat because they are more conductive of energy than drywall. This means 1 heater will heat less space when you have walls and/or ceilings with block or concrete. 50% more power is a general rule for these rooms. All buildings are not created equal and more conductive materials take more energy to heat.**

**STEP 1**  
Inspect your Elite 8 for damage - Do not use if damaged. Check all heating elements to make sure everything works and nothing was damaged from shipping. If damaged from shipping do not use and contact us immediately at 877-375-0005.

**STEP 2**  
Always check for fire sprinkler installed in a building. Keep the heat level at fire sprinkler head a minimum of 30° F below the trigger temperature of the fire sprinkler. Place the sprinkler head protector into position with small ice packs. Make sure that the amount of ice in the cover allows the fire sprinkler head to fit inside cover without touching the ice packs.

**STEP 3**  
Turn off any AC or Heater units within the unit. Cover bathroom exhaust fan grills and any A/C air returns with tape or similar material to reduce heat loss via thermal stacking. Remember that heated air naturally rises. By focusing the energized air directly over the floor coverings, and along the walls and furniture, the heated air will heat the treatment area from the ground up.

**STEP 4**  
Cover single pane windows with reflective insulating material such as Reflectix.

**STEP 5**  
Pull all furniture, chairs, couches, beds, headboards, nightstands, etc. at least 6 inches away from the walls of the room to allow airflow along the walls. If the headboard is attached to the wall, leave it in place. Be sure to direct heated air low to the floor by pointing electric heaters towards carpeting. Aim heaters towards floor coverings and hard to heat infested areas such as the head boards.

**STEP 6**  
Slightly open any cupboards and drawers approximately 4 to 6 inches.

**STEP 7**  
If room has pedestal or sealed type bed frames that obstruct airflow under the bed: Prop the bed and box spring using a chair or drawer to ensure airflow. Note: Try to disturb the room as little as possible to avoid disturbing the insects and driving them into wall voids or under carpet pads.

**STEP 8**  
Ensure proper air flow direction (See Graph). Be sure to leave plenty of room in front and behind heater and fan. Secure loose paper. Do not place back of fan too close to hanging curtains that could be sucked into the fans or heater.

**STEP 9**  
Place heater and additional fans following the above diagram to create the proper airflow. You will need to adjust heater and fan placement to maximize airflow according to the actual room configuration. Be sure to plug in the Black Fan Cord attached to the heater as well in order to operate the fan and the temperature controls.

**STEP 10**  
If present, plug splitter into A/C 20 amp 240 volt outlet and plug the four splitter cords in the heater plug receptacles. See step 11 and follow for both sides if your

**STEP 11**  
Run additional power cords to the remaining orange plugs. When utilizing wall outlets, make sure the total power draw per circuit does not exceed breaker capacity (2 Blue Cords / 20amp 110 volt Circuit or 1 Blue Cord / 15 amp 110 volt Circuit).

**STEP 12**  
After plugging in all the heating elements, and ensuring all the lights are lit, turn on the fan (GREEN SWITCH). Note: Be sure to unplug all electrical items. Do not place electrical items directly in front of the heater. Electrical items are rated for higher temperatures than you are heating, just avoid the direct heat coming out of the heater.

**Caution:**  
Always turn fans on prior to turning heater on. Always turn heater off prior to turning fans off.

**STEP 13**  
Your Elite 8 Heater comes with a state of the art digital temperature controller built into the unit. The controller is preset to 132° Fahrenheit and requires no need for adjustment to use your Elite 8 unless you want to change the high temperature settings. To change the high temperature setting push the set button on the thermostat up or down. Push the set button when finished.

**STEP 14**  
Close the room door and allow to heat for at least 15 hours (24 hours is ideal). Ensure all the surface temperatures within the treatment area are above 120° Fahrenheit.

**STEP 15**  
Place a towel under the door to reduce heat escaping the treatment area.

**STEP 16**  
Target temperatures will begin to be achieved around the 7 to 10 hour mark. Monitor the room as desired using the provided infrared laser spectrometer pistol. This will give you a quantifiable measurement of the temperatures in the room. Take temperature readings in the corners, low next to the carpet on the outside walls of the room where glass windows or sliding doors are located. Take temperature readings under the bedspread and pillows, inside drawers, around headboards, inside under carpet edges if possible. Point the air movers towards any cool spots located during your monitoring efforts. All the surface temperatures within the treatment area should be above 120° Fahrenheit.

Each heating element draws 8 amps or 960 watts. Two (2) heating elements can be plugged into a 20 amp circuit or One (1) heating element per 15 amp 110 volt circuit.

With (4) 20amp or 8 15 amp circuits you can achieve full power of your Elite 8 creating 26,160 BTUs.

**ELITE 8 BED BUG HEATER**

FAN SWITCH, HEATER SWITCH, THERMOSTAT, BLACK FAN CORD MUST BE PLUGGED IN TO TURN ON HEATER, GREEN MASTER LIGHT, A/C/PTAC ADAPTOR (CHANGE LIGHTS ONLY), PTAC SPLITTER IS NOT REQUIRED FOR USE

DETAILED TRAINING INSTRUCTION VIDEOS, HEAT PREPARATION SHEETS AND MANUALS CAN BE FOUND AT

**INSTRUCTIONS FOR ELITE 4 BED BUG HEATER**

USE AT YOUR OWN RISK!

**NOTE: Walls and ceilings made of block or concrete require more heat because they are more conductive of energy than drywall. This means 1 heater will heat less space when you have walls and/or ceilings with block or concrete. 50% more power is a general rule for these rooms. All buildings are not created equal and more conductive materials take more energy to heat.**

**STEP 1**  
Inspect your Elite 4 for damage - Do not use if damaged. Check all heating elements to make sure everything works and nothing was damaged from shipping. If damaged from shipping do not use and contact us immediately at 877-375-0005.

**STEP 2**  
Always check for fire sprinkler installed in a building. Keep the heat level at fire sprinkler head a minimum of 30° F below the trigger temperature of the fire sprinkler. Place the sprinkler head protector into position with small ice packs. Make sure that the amount of ice in the cover allows the fire sprinkler head to fit inside cover without touching the ice packs.

**STEP 3**  
Turn off any AC or Heater units within the unit. Cover bathroom exhaust fan grills and any A/C air returns with tape or similar material to reduce heat loss via thermal stacking. Remember that heated air naturally rises. By focusing the energized air directly over the floor coverings, and along the walls and furniture, the heated air will heat the treatment area from the ground up.

**STEP 4**  
Cover single pane windows with reflective insulating material such as Reflectix.

**STEP 5**  
Pull all furniture, chairs, couches, beds, headboards, nightstands, etc. at least 6 inches away from the walls of the room to allow airflow along the walls. If the headboard is attached to the wall, leave it in place. Be sure to direct heated air low to the floor by pointing electric heaters towards carpeting. Aim heaters towards floor coverings and hard to heat infested areas such as the head boards.

**STEP 6**  
Slightly open any cupboards and drawers approximately 4 to 6 inches.

**STEP 7**  
If room has pedestal or sealed type bed frames that obstruct airflow under the bed: Prop the bed and box spring using a chair or drawer to ensure airflow. Note: Try to disturb the room as little as possible to avoid disturbing the insects and driving them into wall voids or under carpet pads.

**STEP 8**  
Ensure proper air flow direction (See Graph). Be sure to leave plenty of room in front and behind heater and fan. Secure loose paper. Do not place back of fan too close to hanging curtains that could be sucked into the fans or heater.

**STEP 9**  
Place heater and additional fans following the above diagram to create the proper airflow. You will need to adjust heater and fan placement to maximize airflow according to the actual room configuration. Be sure to plug in the Black Fan Cord attached to the heater as well in order to operate the fan and the temperature controls.

**STEP 10**  
If equipped, plug the 2 Way A/C/PTAC splitter into A/C 20 amp 240 volt outlet and plug the 2 splitter cords into 2 heater receptacles. Find 2 x 20 or 2 x 15 amp circuits for the remaining power (4 x 20 or 15 amp circuits will be required if PTAC is not utilized or available or if no splitter option was purchased). When utilizing wall outlets, make sure the total power draw per circuit does not exceed breaker capacity (1 Blue Cord / 20 or 15 amp circuit).

**STEP 11**  
After plugging in all the heating elements and ensuring all the lights are lit, turn on the fan (GREEN SWITCH). Note: Be sure to unplug all electrical items. Do not place electrical items directly in front of the heater. Electrical items are rated for higher temperatures than you are heating, just avoid the direct heat coming out of the heater.

**Caution:**  
Always turn fans on prior to turning heater on. Always turn heater off prior to turning fans off.

**STEP 12**  
Your Elite 4 Heater comes with a state of the art digital temperature controller built into the unit. The controller is preset to 132° Fahrenheit and requires no need for adjustment to use your Elite 4 unless you want to change the high temperature settings. To change the high temperature setting push the set button on the thermostat up or down. Push the set button when finished.

**STEP 13**  
Close the room door and allow to heat for at least 15 hours (24 hours is ideal). Ensure all the surface temperatures within the treatment area are above 120° Fahrenheit.

**STEP 14**  
Place a towel under the door to reduce heat escaping the treatment area.

**STEP 15**  
Target temperatures will begin to be achieved around the 7 to 10 hour mark. Monitor the room as desired using the provided infrared laser spectrometer pistol. This will give you a quantifiable measurement of the temperatures in the room. Take temperature readings in the corners, low next to the carpet on the outside walls of the room where glass windows or sliding doors are located. Take temperature readings under the bedspread and pillows, inside drawers, around headboards, inside under carpet edges if possible. Point the air movers towards any cool spots located during your monitoring efforts. All the surface temperatures within the treatment area should be above 120° Fahrenheit.

Each heating element draws 12 amps or 1500 watts. One (1) heating element can be plugged into a 20 or 15 amp circuit. With (4) 15 or 20 amp circuits you can achieve full power of your Elite 4 at 26,160 BTUs.

Check out our full line of 120 volt conversion accessories at [www.convectex.com](http://www.convectex.com)

**ELITE 4 BED BUG HEATER**

FAN SWITCH, HEATER SWITCH, THERMOSTAT, BLACK FAN CORD MUST BE PLUGGED IN TO TURN ON HEATER

**Bed Bug Heat Eradication Chart**

Bed Bug Adults & Nymphs	Letal Temperature	Time Duration
Bed Bug Adults	113° F / 45° C	15 MINUTES
Bed Bug Eggs	113° F / 45° C	60 MINUTES
Bed Bug All Stages	113° F / 45° C	7 MINUTES

DETAILED TRAINING INSTRUCTION VIDEOS, HEAT PREPARATION SHEETS AND MANUALS CAN BE FOUND AT <http://convectex.com/pages/training>

**CONVECTEX** www.convectex.com | 877-375-0005

This sheet is not to be replicated or disseminated in any form without the written permission of Convectex, LLC. This sheet is for instruction purposes only and in no way addresses any and all treatment and/or infestation needs and/or requirements. This system equipment, Convectex, LLC does not ensure that successful elimination and/or does not guarantee for present and/or future bed bug or pest infestation. BY NOT DENYING Convectex, LLC the responsibility for: 1. Fire 2. Expenses related to the replacement of linen, upholstery, furniture, mattress sealing or related costs. 3. Expenses related to medical evaluation or treatment for bites associated with bed bugs. 4. Damages or expenses for any claim of personal injury related to an infestation of bed bugs or through the use of equipment purchased. 5. Loss of income claimed to be related to any bed bug bites or associated illnesses. 6. Specific damage to electronics, furniture or other household items or furnishings. 7. Personal liability or furnishings, and all flooring types. 8. Fire Suppression System failure. (Due to the high temperatures required for an effective thermal treatment, Convectex, LLC recommends that all fire sprinklers be shut off, capped and disarmed.) Convectex, LLC accepts no responsibility for damages should the sprinkler system remain activated during treatment. These specific exclusions are in addition to the other exclusions contained in the Terms and Conditions found at [www.convectex.com](http://www.convectex.com) USE AT YOUR OWN RISK!