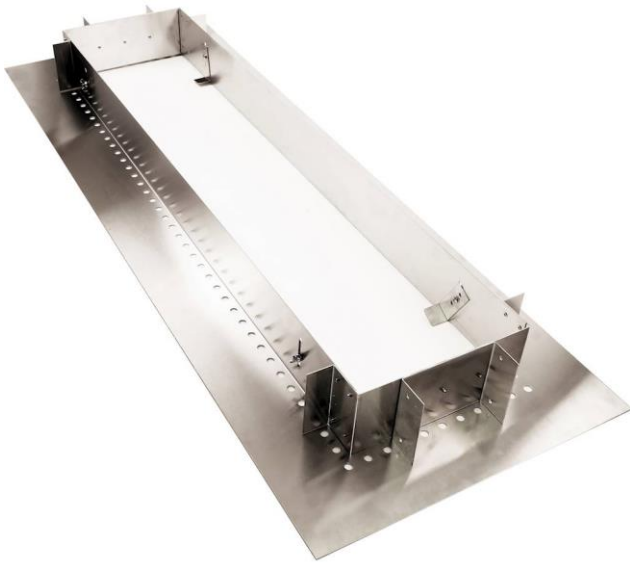




Lynx Professional Flush Mount Kit for LEH61 61-Inch Heaters - FMKIT61 (Flush Mount Kit)



PRODUCT OVERVIEW

Lynx Electric Heaters may be flushed mounted into a non sloped ceiling using a Lynx Flush Mount Kit

Requires a flat ceiling and a minimum 2" x 8" studs, where the heater can face straight when recessed

Use a license contractor in order to complete a flush mount installation

The FMKIT61 is designed to fit the LEH61, 61" Lynx Electric Heater

Avoid flush mounting the heater close to a ceiling fan or light fixture