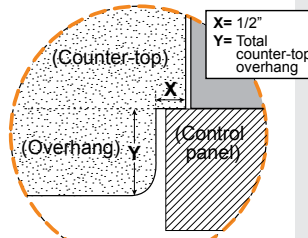


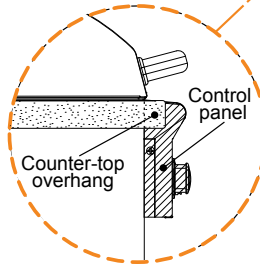
Built-In Grills Height Dimensions

| Description | Hood Open (A) | Hood Closed (B) |
|-------------|---------------|-----------------|
| 24NBT/24NBL | 30½" | 20" |
| 30NBT/30NBL | 30½" | 20" |
| 36NBT/36NBL | 30½" | 20" |

TOP VIEW

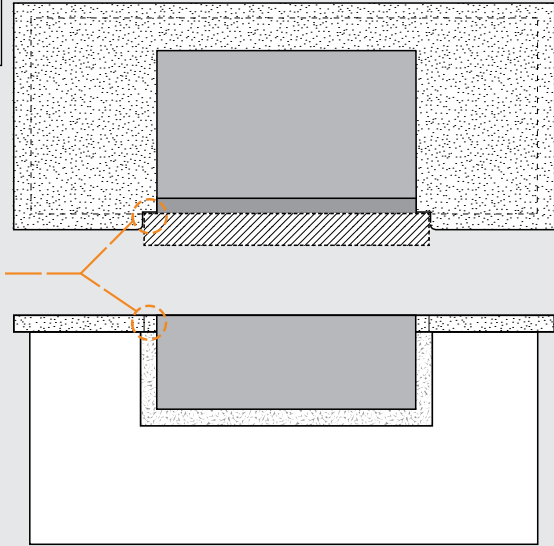


SIDE VIEW



ISLAND COUNTER-TOP OVERHANG

The control panel is designed to sit flush against the enclosure front wall. If the enclosure counter-top extends beyond the front wall, creating a counter-top overhang, it must be cut flush with the front wall for the width of the control panel or a gap will be created exposing the forward portions of the left and right side grill fire walls. See illustrations below.

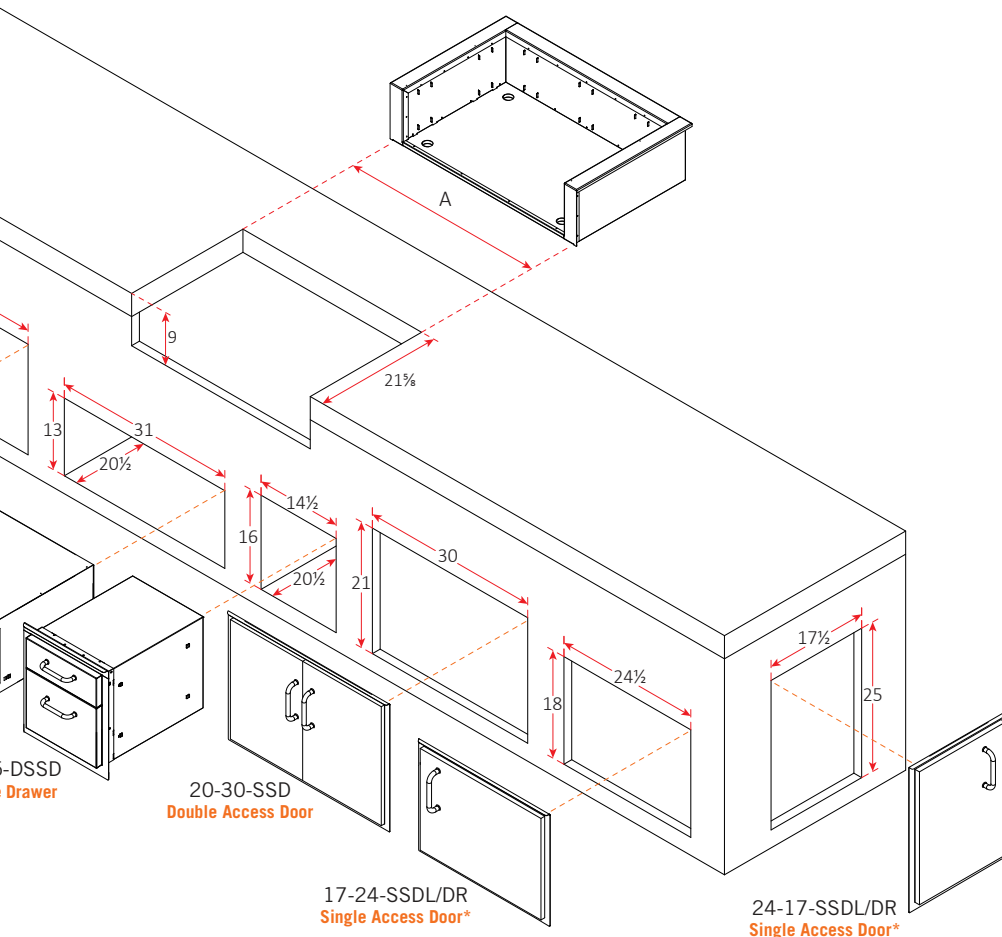


Grill Insulating Liners

(must be used when installing in a combustible island)

| Model | Description | "A" Cut-out |
|---------|----------------------------|----------------------------------|
| 24-IL-C | 24" Grill Insulating Liner | 28 ⁵ / ₈ " |
| 30-IL-C | 30" Grill Insulating Liner | 34 ⁵ / ₈ " |
| 36-IL-C | 36" Grill Insulating Liner | 40 ⁵ / ₈ " |

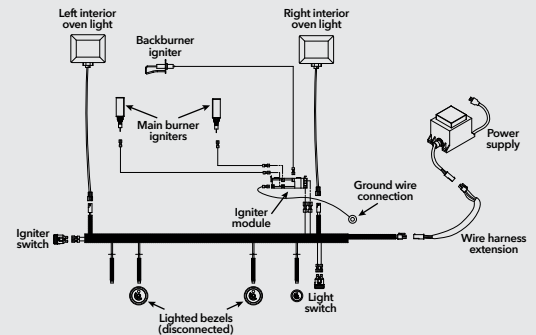
(top to unit bottom)



"L" SERIES ELECTRICAL SPECIFICATIONS

- "L" Series grills require 120VAC (5 AMP min.) power to operate
- Power supply rating - 120VAC / 0.3A / 60 Hz
- Oven lights rating - 12V / 10 watt halogen bulb

"L" SERIES BUILT-IN GRILL WIRING DIAGRAM *



*24" model shown. Model wire diagrams vary between models, a wire diagram specific to each unit can be found affixed to the inside of the control panel.

OUTDOOR KITCHEN CONSIDERATIONS

- Carefully consider grill size & accessories needed
- Combustible construction requires insulating liner
- Select Natural or Propane (LP gas)
- Determine total gas consumption for supply line size
- Access required to gas connections and shut off valve
- Plan location of propane tank away from grill and appliances
- Always refer to the installation and operating instructions of your American Outdoor Grill® and/or accessories for installation guidelines & safety warnings before starting your project
- Always check all gas connections for leaks
- Provide ventilation in island for gas vapors. Allow at least four ventilation openings (two at floor level and two 16" above floor 10 in² each) at opposing ends/sides

LOCATION

- Identify outdoor area where grill will be installed
- Determine the utilities needed (gas, water, electricity, drainage, etc.)
- Consider element exposure (sun, wind direction, weather, etc.)

MATERIALS

- Foundation - concrete
- Base - brick, stone, stucco, concrete
- Counter top - tile, granite, marble, concrete

*Available with left or right hinge