

# KESNOS

## Home Dehumidifier

Please read this manual carefully  
before using the product

**PD10A**

**USER MANUAL**

## FOR CUSTOMERS

Thank you for purchasing our dehumidifier.

**Kesnos** has been committed to developing powerful and easy-to-use products to bring more convenience to your life. We highly recommend you to keep this user manual for future reference in case of unexpected problems.

Please read this user manual carefully to ensure proper use of the dehumidifier. This humidifier is perfect for reducing humidity in family bedrooms, bathrooms, basements, offices, storage rooms and more.

**Kesnos** dehumidifiers reduce the room humidity efficiently, creating a more healthy and comfortable environment for you and your family.

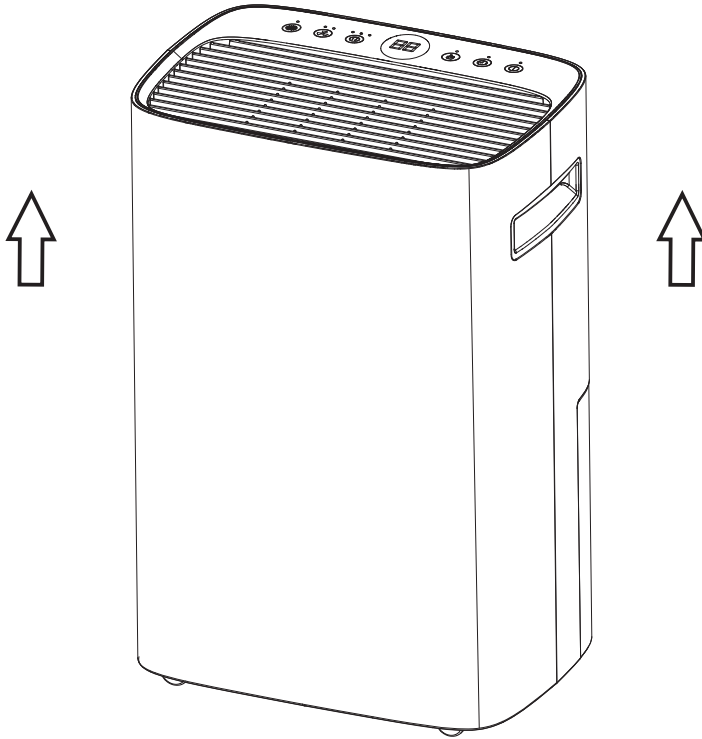
## REQUESTING CUSTOMER SERVICE

If there are any problems of the product, please contact Sleavon Customer Service at [support@kesnos.com](mailto:support@kesnos.com) with your Purchase Order ID. We'll help you solve the problems as soon as possible.

# BEFORE FIRST USE:

To protect the product from any internal damages, please keep the product in the upright position throughout its journey.

Please take out the product and leave it standing in the upright position for **24 HOURS** before plugging it in.



---

# TABLE OF CONTENTS

Precautions for Use.....	1
Parts Description .....	2
Control Panel.....	3
Operation Instructions.....	4
Cleaning & Maintenance.....	12
Troubleshooting.....	13
Special Notes .....	16
Specifications.....	17
Warranty & Contact Us.....	18

## Statement

The graphics and functions provided in this manual maybe not the same as the actual product.

The model shown in this manual is only for reference. Please install and operate the machine according to the actual situations.

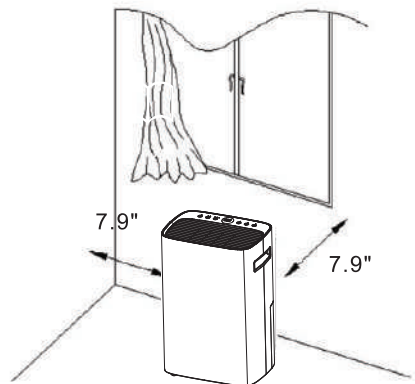
The company reserves the right to interpret relevant terms.

# PRECAUTIONS FOR USE

## Safety notes:

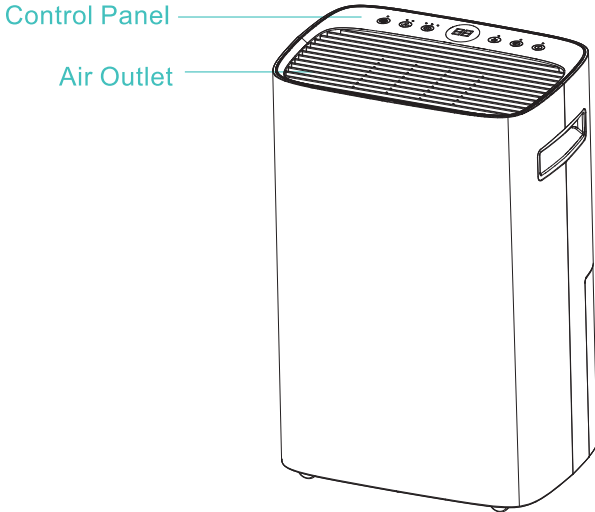
For your safety, please read this manual carefully and keep it for future reference. This product is for home use only. Please install and use the product according to the operations in this manual.

- Before cleaning the dehumidifier, please turn off the machine and unplug it from the power source.
- Please do not place the machine near to heat or flammable goods.
- Do not put any sticks or your fingers into the air inlet or outlet.
- Please always place the machine on a flat ground, rather than uneven or slopping ones.
- Do not spray water, insecticides or flammable liquids on the machine.
- Please do not place the machine in a confined or narrow space.
- If the power cord is damaged, please contact a technician approved by the company to replace it.
- In Dry Mode, please keep the clothes at least 15.7 inches away from the air outlet to prevent the water entering the machine to cause damages.
- Please make sure the machine power wiring is installed in accordance with national wiring rules. The power cord should be connected to a reliable external naught wire.
- The fixed wiring connected to the machine must be equipped with an all-pole disconnect device (air switch) with a contact distance of at least 0.118 inch.
- The specification of the fuse: 3.15A.
- This machine should not be used by people without civil capacity, including those who are physically and mentally impaired, or lack relevant knowledge and experience, unless they are instructed by a professional.
- Please use this dehumidifier in an environment with the temperature range between 41°F/5°C and 95°F/35°C.
- When using the dehumidifier, please keep other surrounding objects at least 7.9 inches/20cm away from the machine. As shown in the picture:

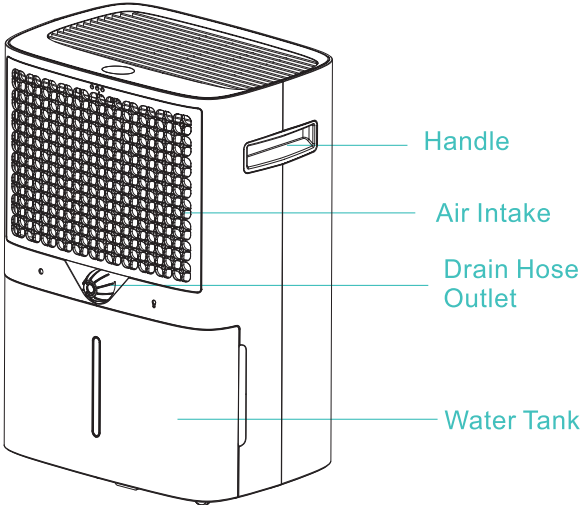


# PARTS DESCRIPTION

## Front

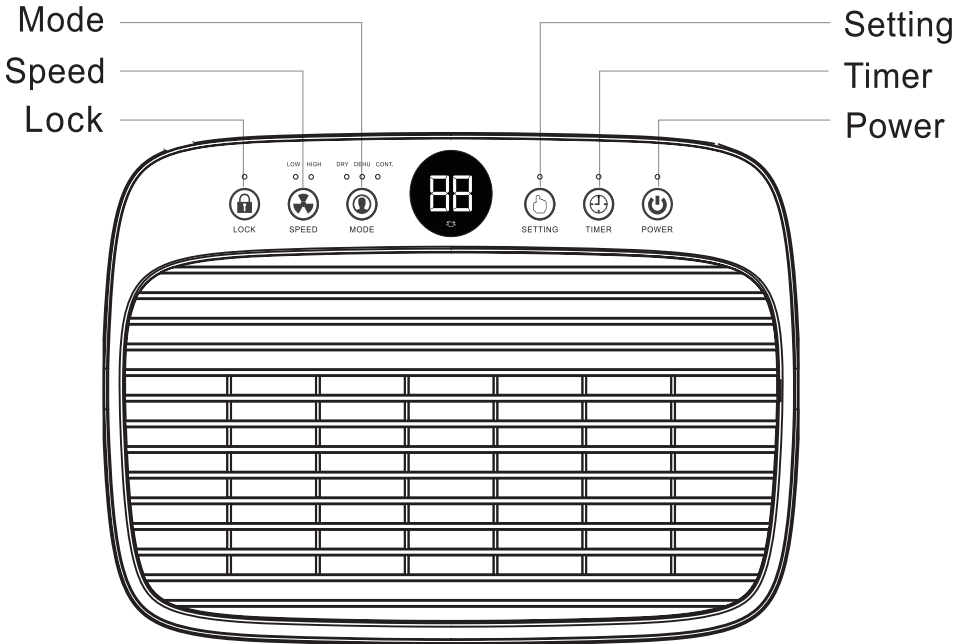


## Back



# CONTROL PANEL

## 1. Control Panel



### Power Button

Press this button to turn on or turn off the machine.



### Setting Button

Press this button to turn up or turn down the set humidity.



### Mode Button

Press this button to select mode.



### Timer Button

Press this button to activate the auto start and auto stop function.



### Child-Lock Button

Press this button to activate or deactivate the child-lock function.



### Speed Button

Press this button to control the fan speed.

## 2. Settings

### Mode Setting

The dehumidifier has three working modes, namely, Dry Mode, Dehumidify Mode and Continuously Dehumidify Mode.

When Power On, press the [Mode] button, the device will cycle through, the driving, dehumidifying, and continuous dehumidifying modes.

In the standby state, you can press the Mode button to switch the working mode among Dry Mode, Dehumidify Mode and Continuously Dehumidify Mode. The working mode will switch once you press the Mode button.

**Dry Mode:** In this mode, the humidity and fan speed are not adjustable.

**Dehumidify Mode:** In this mode, the humidity and fan speed are adjustable.

**Continuously Dehumidify Mode:** In this mode, the humidity is adjustable while the fan speed is not.

### Humidity Setting

The humidity level can be set within the range of 30% RH to 80% RH in 5% increments.

- When the machine starts to work, it will automatically detect and show the room humidity first. In dehumidification mode, press the "Dehumidify" button to set the humidity in 5% increments. Then it will flash "52" and show the set humidity. Now you can set the humidity within the range of 39% RH to 80% RH in 5% increments. If you do not operate the machine for 5 seconds, "52" will show the actual room humidity.
- When the room humidity is higher or lower than the humidity you set, the machine will automatically begin to work or stop.
- When the humidity level is set at 30% RH, the machine will work in continuous dehumidification mode.

### Timer Setting

This setting is used for you to set a time when the machine will turn on and turn off automatically.

1. Press the "TIMER" button to select the timer by 1-hour increments.

You can set the timer up to 24 hours. The machine will start to countdown when you start the timer.

2. Press and hold the "TIMER" button for several seconds to select faster.

3. If the timer is set to 00, it will be a invalid time. If you set the timer successfully, the light "o" will light up. The led screen will display the time for several seconds and show the current humidity.





# OPERATION INSTRUCTIONS

## Speed Button

Press this button to control the fan speed. By press it, you can choose either High or Low speed. Higher speed results in quicker moisture removal. So when you want to reduce the humidity quickly, please choose the High speed; If you have reduced the humidity or prefer quieter operation, please choose the Low speed.



## Child-Lock Setting

Press and hold the "  " for 3-5 seconds to lock or unlock the control panel. When the "  " function is activated, the indicator will flash and other buttons will be disabled. You can unlock the control panel to enable the buttons again.

## Memory Function

1. The machine will automatically restore to its working state when it is turned on.
2. If power outage occurs when the machine is working, the machine will keep the previous parameters or settings when power resumes.
3. If power outage occurs when the machine is not working, the machine will not automatically turn on when power resumes.

## Overflow Protection

When the bucket is full, the indicator light  will flash and the machine will turn off automatically. When you empty the water tank, the indicator light  will turn off and the machine will restart yo work.

## Auto Defrost Function

When the dehumidifier is running at a lower temperature, the system will automatically determine whether there is a presence of frost. If the machine determines there is a presence of frost, it will defrost automatically.


## Defrost Action

The fan runs at a high speed when the compressor stops working.

## Defrost Status Display

In defrosting status, the power button "O" will flash.

## 3. Display Status Description

- If the machine is connected to a power source, the "POWER" button will light up to indicate it is standby state.
- Timer indicator light "o": If the timer is set properly, the indicator will light up. If not, the light will not light up.
- The lighting button "o" : This indicator will light up when using light function. Otherwise, it will not light up.
- High-speed indicator light "  $\overset{\text{HIGH}}{\text{O}}$  " : If you set the high speed, this indicator will light up.
- Low-speed indicator light "  $\overset{\text{LOW}}{\text{O}}$  " : If you set the low speed, this indicator will light up.
- Dry mode indicator light "  $\overset{\text{DRY}}{\text{O}}$  " : When you select Dry Mode, this indicator will light up. Otherwise, it will be off.
- Dehumidify mode indicator light "  $\overset{\text{DEHU}}{\text{O}}$  " : When the machine starts to dehumidify, this indicator light will light up. When the room humidity reaches the set humidity, the light will flash. Otherwise, it will be off.
- Continuous dehumidify mode indicator "  $\overset{\text{CONT}}{\text{O}}$  " : When you select continuous dehumidify mode, this indicator will light up. Otherwise, it will be off.
- Full tank indicator light "  " : When the water tank is full, this indicator will flash.
- When the machine is alarming, the display panel will show alarm error. (The alarm error and the humidity data will flash).
- When the machine is working, the display panel will show " 55 " to indicate the humidity.

## 4. Instructions for Drying Clothes

The dehumidifier can be used for drying clothes in rainy weather.

### Step 1.

Hang the washed clothes in a small space such as a cloakroom, bathroom, or storage room.

Please keep the machine away from the water drips from the wet clothes.

### Step 2.

Turn on the dehumidifier and set the humidity level at 30% RH. It is perfect if you can let the machine air outlet blow the air to the wet clothes directly.

1. The drying effect will vary according to the clothes thickness, quantity and the size of the drying space. Theoretically, the effect will be better if you hang few thin clothes in a small space.
2. It will take 3-8 hours to dry the wet clothes in general. We suggest that you should use continuous drainage when drying clothes.

## 5. Faults and Solutions

Problems	Analysis of Causes	Solutions
Humidity always shows "25% RH" but there is a big difference from the actual humidity.	Does the humidity sensor fail?	Set the humidity to 30% RH and check if the dehumidifier can work normally. If it does, the machine is in a good condition.
		Repair or replace the humidity sensor.
Humidity always shows "99% RH" but there is a big difference from the actual humidity.	Is there some water on the surface of the humidity sensor?	The dehumidifier can work normally. The moisture removal effect is not affected.
		Please keep the machine working for a while to remove the water on the humidity sensor surface. The machine will work normally when the water is removed.
		Repair or replace the humidity sensor.

If the malfunctions still exist, please don't hesitate to contact Kesnos Customer Service at [support@kesnos.com](mailto:support@kesnos.com) for help.

**Notice:**

Before turning on the machine, please be sure to have opened the air outlet. Otherwise, the machine will overheat. Do not unplug the power cord directly to turn off the machine.

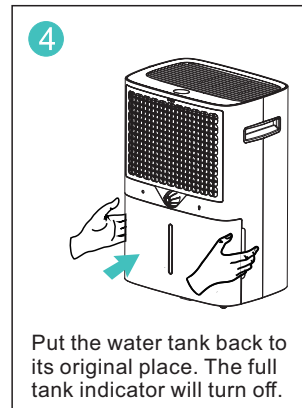
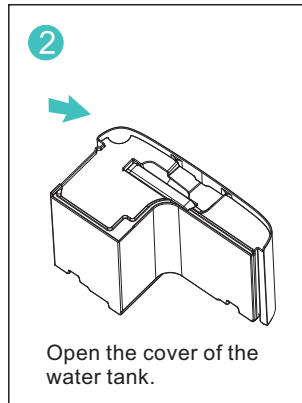
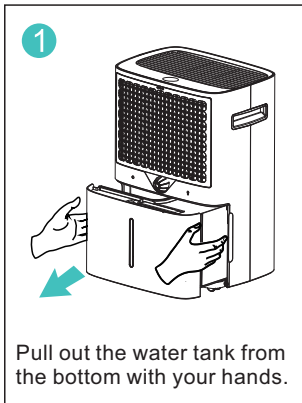
## 6. Emptying the Water Tank

There are two methods to remove the collected water in the tank.

### Using the Bucket

When the water tank is full, the full tank alert indicator will light up and the dehumidifier will automatically shut down until the tank is emptied and placed back to the machine.

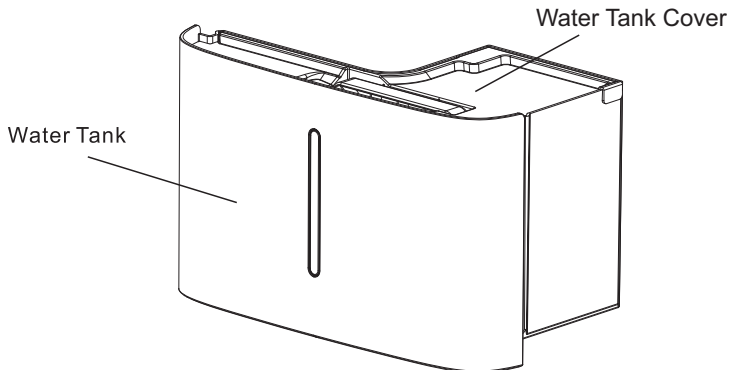
### Steps to Empty the Water Tank



# OPERATION INSTRUCTIONS

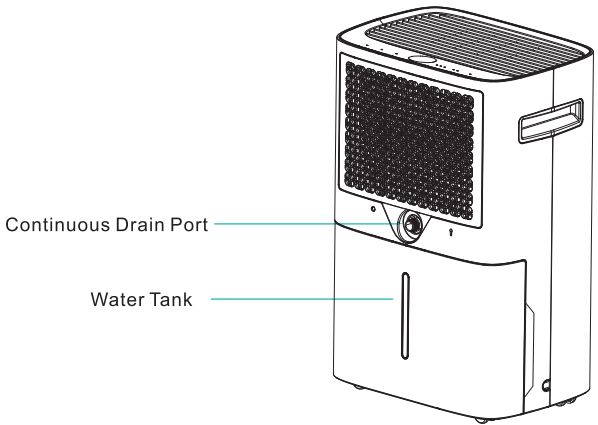
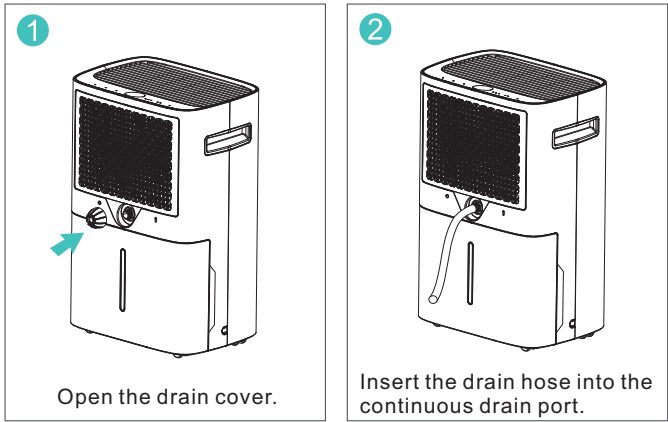
## Note:

- Do not remove the float in the water tank. Otherwise, the sensor maybe unable to identify the water level in the tank properly, thus causing water leakage.
- If the water tank is dirty, please use cold or warm water to clean it. Do not use any detergents, steel wools, chemically-treated dust clothes, gasoline, benzene, thinners or other solvents. Otherwise, it may damage the water tank and cause it to leak.
- When place the water bucket back, please use your hands to gently put it back to its original place. If the water tank is not placed properly, the sensors



## 7. Continuous Drainage

To continuously drain, please unplug the machine from the power source first. Then take out the water tank and open the drain cover. Now insert the drain hose into the continuous drain port and place the water tank back to its original place. Plug the machine into the power source to start continuous drainage. Please make sure that the drain hose should be lower than the continuous drain port by at least 3.9 inches. Do not bend the drain hose.



# CLEANING AND MAINTENANCE

## **⚠ WARNING:**

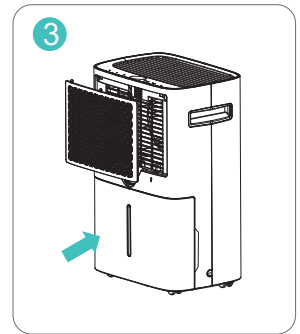
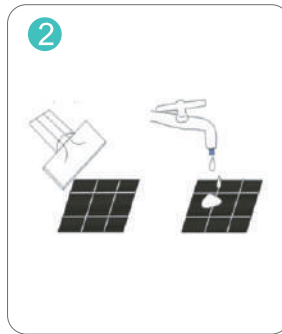
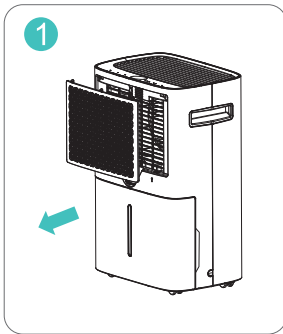
Please turn off the dehumidifier and unplug it from the power source before cleaning.

### **A-Cleaning the Dehumidifier Body**

Please use a soft and slightly damp cloth to clean the humidifier body.

### **B- Cleaning the Filter**

- Pull out the filter.
- Clean the filter: Use a vacuum cleaner to gently remove the dust from the surface of the filter. If the filter is very dirty, wipe it with warm water and a mild detergent and dry it completely.
- Carefully insert the filter back to its original place.



### **C-Dehumidifier Storage**

If you don't use the machine for a long time, please store it according to the following steps:

1. Empty the water in the water tank.
2. Roll up the power cord and tie it up.
3. Clean the filter.
4. Place the machine in a cool and dry environment.



# TROUBLESHOOTING

Check the information below for troubleshooting the common problems you may encounter in the future. These abnormal conditions that are not faults caused by manufacturing process or material defects.

If the malfunctions still exist, please feel free to contact Kesnos customer service for help.

Problems	Possible Causes	Troubleshooting
Dehumidifier does not work	The power cord is unplugged.	Make sure that the unit's plug is inserted properly into the power outlet.
	Is the full tank indicator flashing? (The tank is full or it is in a wrong position.)	Empty the water in the water tank and then reposition the tank.
	Is the room temperature above 95°F (35°C) or below 41°F (5°C).	The machine cannot work in an overheat or cold environment. It will automatically shutdown to protect itself.
	Is the room temperature between 41°F(5°C) and 68°F(20°C) ?	When running under lower ambient temperature, the machine will automatically defrost, it is a normal phenomenon. Wait until the defrost process finish, it will restart dehumidifying again.
	The dehumidifier is in the defrosting process.	It is normal the compressor ceases while defrosting process. Wait until the defrost process finish, it will restart dehumidifying again.
	Does the room humidity is lower than or reach the preset humidity level? (The room humidity has reached the preset humidity level, the dehumidifier enters into Standby Mode and the the LCD and indicators will flash.)	Please set the humidity 5% lower than the room humidity or set the humidity to 30% RH.
	There is prevent frequent start function in the machine. Dose the machine stop working just now?	Please wait for more than 3 minutes.
	Room humidity is low.	The machine is designed to work in the humidity range of 30% RH to 80% RH. It will not work if the humidity is not within this range.

# TROUBLESHOOTING

Dehumidifier does not dry the air as it should	The air filter is dirty.	Clean the air filter.
	Is the air inlet or air outlet obstructed?	Remove the obstruction from the air inlet or outlet.
	The dehumidifier size is too small for application.	Increase the quantity of dehumidifier. Or change a higher capacity dehumidifier.
	Poor air circulation.	Please leave about 7.9inch(20cm) around the product.
	Did not allow enough time to remove the moisture.	Allow enough time to remove the moisture. When first installed, allow at least 3-4 days to maintain the desired RH.
	The room has not been sealed properly.	Check that all doors, windows and other openings are securely closed.
	The room temperature is too low or the ambient temperature is below 41°F (5°C) (The machine will not work or it dehumidifies very slowly in low temperature).	Please wait the temperature rises above 5°C or higher.
The dehumidifier makes loud noise when operating	The dehumidifier is not positioned level.	Move the machine to a horizontal position.
	Is there blocking around the air inlet? The air filter is clogged.	Clean up the dirt on the air inlet and outlet.
	Is the filter installed correctly?	Please check to see if the filter package is removed and it is installed properly.
Dehumidifier operates continuously	Check if the dehumidifier is in CONTINUOUS MODE.	Don't set the humidity too low. Typically, 40-50% are good settings to use.
	Room humidity is too high.	Change humidity settings or replace the machine with a higher-capacity dehumidifier.
	Doors and windows are open.	Ensure that all doors, windows and other openings are closed.

# TROUBLESHOOTING

Overflow of water on floor	The connection between the hose and port may be loose.	Connect the hose with the drain outlet tightly.
	The water tank is not installed properly.	Re-install the water bucket properly.
	The float of the water tank has sunk.	Move the float and make sure it can swing freely.
	The magnet on the float has come off.	Put the magnet in right position.

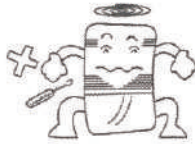
**Notice:**

If the dehumidifier is still not working properly as expected and the troubleshooting steps or solutions above may not resolve the issue. Please unplug the power and shut down the dehumidifier then contact Kesnos customer service [support@kesnos.com](mailto:support@kesnos.com)

## SPECIAL NOTES



- 1 When using the machine, please do not put it on a soft or uneven ground to prevent vibration and movement.



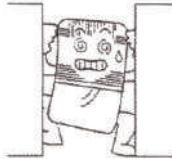
- 2 Do not insert any thin rods or hard items into the machine to prevent malfunctions and dangers.



- 3 When using the machine, please keep it away from any heating furnaces, electric kettles and other heating sources.



- 4 When using the machine, please close doors and windows for the optimal moisture removal effect.



- 5 Please do not put any objects around the machine. The dehumidification effect will be affected if the ventilation is bad.



- 6 Please unplug the machine from the power source if you do not use it for a long time.



- 7 When cleaning the machine, please use wet cloth to wipe gently. Do not spray water on it directly.



- 8 Please do not put any objects on the dehumidifier.



- 9 Please clean the filter every two weeks. Do not use hot water above 104°F, alcohol, gasoline or toluene.



- 10 When using the hose to drain continuously, please place the hose horizontally and make sure it is even and not winded.



- 11 After cleaning the filter, please do not dry it under direct sunlight to prevent it from deforming.



- 12 Before moving or carrying the machine around, please empty the water tank first.

# SPECIFICATIONS

MODEL	PD10A
POWER SOURCE	120V~60Hz
RATED POWER	720W
RATED CURRENT	6.5A
MOISTURE REMOVAL(65°F,60%RH)	35Pints/Day
MOISTURE REMOVAL(80 °F,60%RH)	50Pints/Day
MOISTURE REMOVAL(86 °F,80%RH)	80Pints/Day
MOISTURE REMOVAL(95 °F,90%RH)	100Pints/Day
INPUT POWER(65°F,60%RH)	380W
INPUT CURRENT(65°F,60%RH)	3.6A
IEF( 65°F,60%RH)	1.80 liters/kWh
MOTOR FLA	0.5A
MOTOR COMPRESSOR	RLA:7.0A LRA:19A
REFRIGERANT	R410A/170g(6.0ozs)
MAXLMUM ALLOWABLE PRESSURE	5.5MPa
MAXLMUM OPERATING PRESSURE HIGH	4.0MPa
MAXLMUM OPERATING PRESSURE LOW	1.7MPa

**⚠ WARNING:**

This product can expose you to chemicals including Styrene and its compounds, which is known to the State of California to cause cancer and birth defects or other reproductive harm. For more information, please visit: [www.P65Warning.ca.gov](http://www.P65Warning.ca.gov).

## WARRANTY AND CONTACT US

### Warranty

---

Kesnos offers a 12-month warranty to all of our products together with the original proof of purchase when a defect occurred, including those newly purchased and unused, from Kesnos or through an authorized reseller, wholly or substantially, or as a result of faulty manufacturing parts, or workmanship during the Warranty Period.

The warranty does not apply if damage is caused by other factors, including but without limitation of:

- (a) Normal wear and tear;
- (b) Abuse, mishandling, accident or failure to follow operating instructions;
- (c) Exposure to liquid or infiltration of foreign particles;
- (d) Servicing or modification of the product other than by Kesnos.

There are our general terms for the warranty service, but we always encourage our customers to contact us if any issues, regardless of warranty terms. If you are experiencing an issue with Kesnos product, you can reach out to us at [support@kesnos.com](mailto:support@kesnos.com), we will dedicate our efforts to resolve it for you. )

### Extend Your Warranty by 1 Year

---

Register your product at [www.kesnos.com](http://www.kesnos.com) to extend your 1-year warranty by an additional year.

\*Please fill out all required fields and include your Order ID, Date of Purchased if applicable.

### Customer Support

---

If you have any questions or concerns about our product, please feel free to contact our expert support team. Sleavon customer service is ready to help.

#### **Kesnos Office**

13211, Spring Street Baldwin Park, CA, US

Email: [support@kesnos.com](mailto:support@kesnos.com)

Live Chat: [www.kesnos.com](http://www.kesnos.com)

#### **Support Hours**

24 Hours available

\*Please have your Order Number ready before contacting customer support.



# KESNOS

For FAQs and more information please visit:

[www.kenos.com](http://www.kenos.com)



@Kesos



@Kesos



@Kesos



@Kesos



(Scan the QR Code for Live Chat)

We are expecting to see our products fulfill your life and hear your voice.

Your satisfaction means a lot to us.

Please tag us if you share a snap on your social media.

[www.kenos.com](http://www.kenos.com)