

New 2020 Edition 2>LED Strips & Profiles

## 7835/UW



Flexible LED light strip, with SMD2835 LEDs, 70LEDs/meter, 14,4W/meter. Supplied in 5 meters roll with white PCB and double adhesive tape for a better fixing.

Can be cut every 10cm (7-LED segment).

Requires 24V DC constant voltage LED driver.

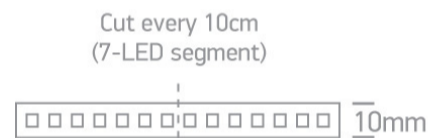
Complies with standard EN60598-1 and any other specific standards.



### Downloads



### Dimensions



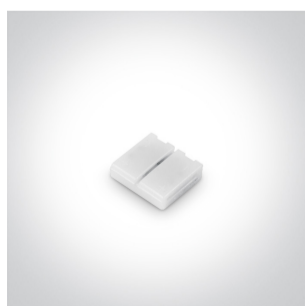
### Gallery



### Accessories



7835P



7837

## Related items




20030

## Physical Specification

Item Group	New 2020 Edition 2
Family	LED Strips & Profiles
Order Code	7835/UW
Shape	Rectangular
Length	5000mm
Width	10mm
Surface Ceiling	Yes
Surface Wall	Yes
Surface Floor/Ground	Yes
Indoor	Yes

## Electrical Characteristics

### Fitting

Input Type	Constant Voltage
Input Voltage	24V DC
Safety Class	
Power(Watts)	14,4W/m
IP Rating	IP20
Light Source	LED built in
LED Type	SMD 2835
LED Brand	Refond
LED Number	70Leds/m

## Illumination Data

Colour Temperature	2200K
Lumen Output	1008lm/m
Light Efficiency	70lm/W
CRI	90
Illumination Diagram	

## Packing Info

Box Length	24cm
Box Width	21,5cm
Box Height	2cm
Box Weight	0,19kg
Pcs/Carton	40
Barcode	5291889062264
HS Code	9405409989

## Certification & Warranty

Warranty	3 Years
Weee Directive	Yes

switch to  
**one light!**

**one**  
LIGHT

