



RGB flexible LED light strip, with SMD5050 LEDs, 60LEDs/meter, 14,4W/meter. Supplied in 5 meters roll with white PCB and double adhesive tape for a better fixing.

Can be cut every 10cm (6-LED segment).

Requires 24V DC constant voltage LED driver.

Complies with standard EN60598-1 and any other specific standards.



Downloads



Dimensions

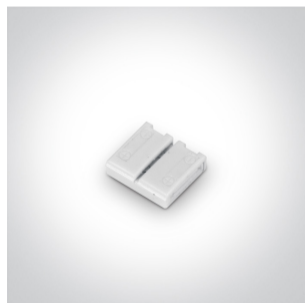
Cut every 10cm
(6-LED segment)



Related items



20034



7832/RGB



7834/RGB

Physical Specification

Item Group

09 LED Strips & Profiles

Family

The RGB & RGBW Strips

Order Code

7830/RGB

Shape

Rectangular

Length

5m

Width

10mm

Surface Ceiling

Yes

Surface Wall	Yes
Surface Floor/Ground	Yes
Indoor	Yes

Electrical Characteristics

Fitting

Input Type	Constant Voltage
Input Voltage	24V DC
Safety Class	
Power(Watts)	14,4W/m
IP Rating	IP20
Light Source	LED built in
LED Type	SMD 5050
LED Brand	Refond
LED Number	60Leds/m

Illumination Data

Colour Temperature	RGB
Illumination Diagram	

Packing Info

Box Length	24cm
Box Width	21,5cm
Box Height	2cm
Box Weight	0,2kg
Pcs/Carton	40
Barcode	5291889017691
HS Code	9405409989

Warranty

5 Years

Weee Directive

Yes

switch to
one light!

one
LIGHT

