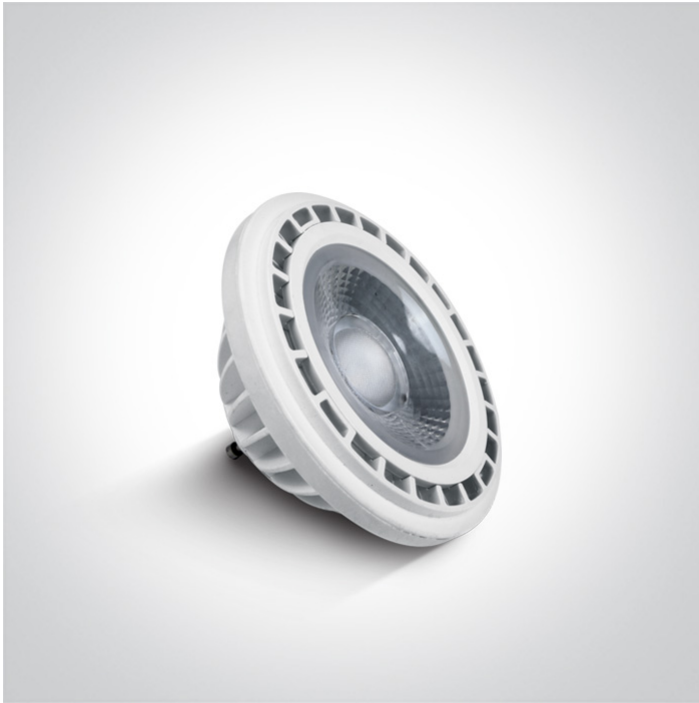


25 Lamps>R111 GU10 LED Dimmable

## 7315GD/W/45



Triac Dimmable R111 SMD LED GU10 15W 230V AC lamp.

Suitable for residential and commercial applications.

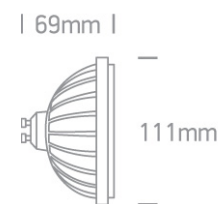
Complies with standard EN62560 and any other specific standards.



### Downloads



### Dimensions



### Physical Specification


Item Group	25 Lamps
Family	R111 GU10 LED Dimmable
Order Code	7315GD/W/45
Shape	Circular
Height	69mm
Diameter	111mm

### Electrical Characteristics

Gear	No
Lamp	
Input Type	Constant Current

Input Voltage	220-240V
50 Hz	Yes
60 Hz	Yes
Power(Watts)	15W
IP Rating	IP20
Lamp Type	LED
Lamp Holder	GU10
LED Type	SMD 2835
LED Brand	Epistar
Dimmable	Yes
Dimmer type	Triac

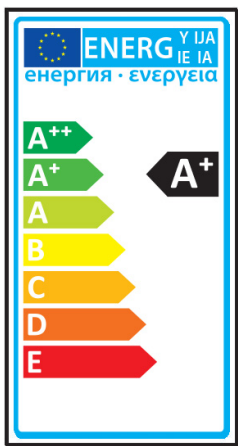
#### Illumination Data

Colour Temperature	3000K
Lumen Output	1200lm
Light Efficiency	80lm/W
CRI	80
Beam Angle	45°
Illumination Diagram	

#### Packing Info

Box Length	11,5cm
Box Width	9cm
Box Height	9cm
Box Weight	0,270Kg
Pcs/Carton	20
Barcode	5291889041771
HS Code	8539500000

#### Energy Label



Energy Consumption

15kWh/1000h

Certification & Warranty

Warranty

2 Years

Average Lifetime

50000hrs

Switching Cycles

15000

Weee Directive

Yes

switch to  
**one light!**

one  
LIGHT

