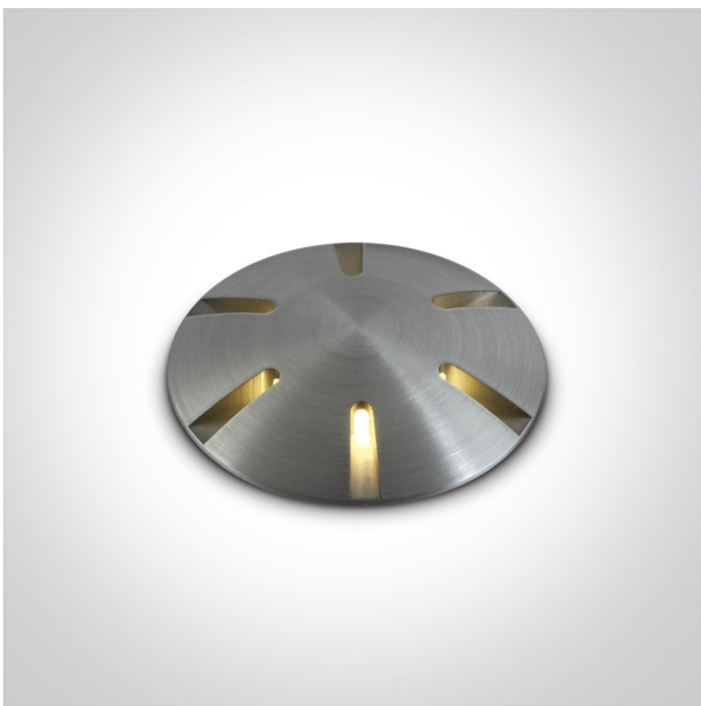


19 Wall Recessed & Inground>The Inground Mini Series Natural Aluminium

69044/AL/W



1W COB LED inground, IP67, stainless steel 316, for path illumination.

Requires 350mA driver.

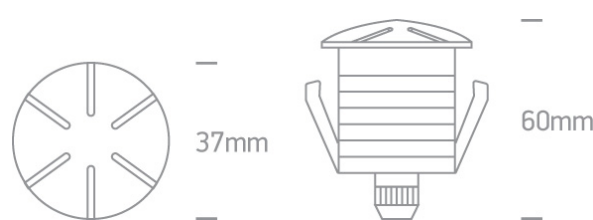
Complies with standard EN60598-1 and any other specific standards.



Downloads



Dimensions



Gallery



Physical Specification

Item Group

19 Wall Recessed & Inground

Family

The Inground Mini Series Natural Aluminium

Order Code

69044/AL/W

Colour

Aluminium

Material

Natural Aluminium

Diffuser Material

Glass



Shape

Circular


Height	53mm
Diameter	37mm
Cutout Hole Diameter	30mm decking 35mm concrete
Inground	Yes
Depth Required	80mm deck 95mm+300mm drainage Concrete
Indoor	Yes
Outdoor	Yes

Electrical Characteristics

Fitting

Input Type	Constant Current
Input Current	350mA
Voltage	3,1V
Safety Class	
Power(Watts)	1W
IP Rating	IP67
Light Source	LED built in
LED Type	SMD
LED Brand	Cree
LED Number	1
Cable Length	200cm
F Mark	

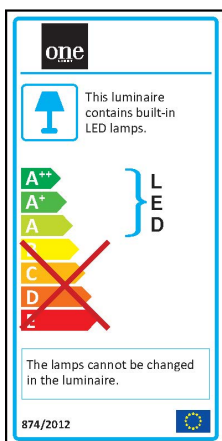
Illumination Data

Colour Temperature	3000K
Lumen Output	80lm
Light Efficiency	80lm/W
CRI	85
Illumination Diagram	

Packing Info

Box Length	6,5cm
Box Width	5cm
Box Height	10,5cm
Box Weight	0,188Kg
Pcs/Carton	50
Barcode	5291889050285
HS Code	9405409900

Energy Label



Certification & Warranty

Warranty	2 Years
Average Lifetime	50000Hours
Weee Directive	Yes

switch to
one light!

one
LIGHT

