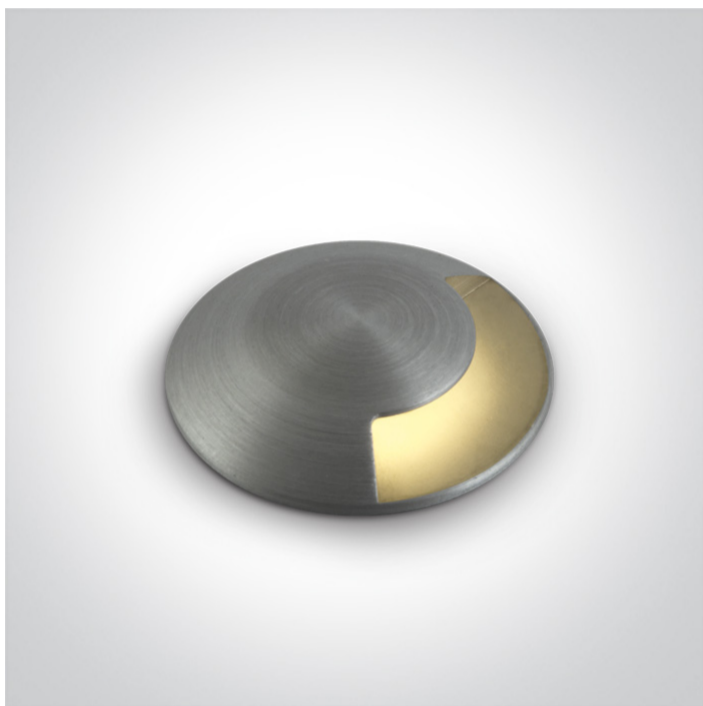


19 Wall Recessed & Inground>The Inground Mini Series Natural Aluminium

## 69042A/AL/W



1W COB LED inground, IP67, stainless steel 316, for path illumination.

Requires 350mA driver.

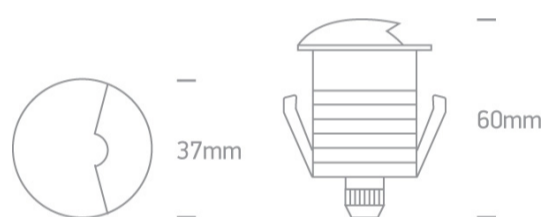
Complies with standard EN60598-1 and any other specific standards.



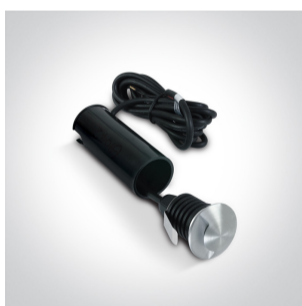
### Downloads



### Dimensions



### Gallery



### Must be ordered separately




89004

## Physical Specification

Item Group	19 Wall Recessed & Inground
Family	The Inground Mini Series Natural Aluminium
Order Code	69042A/AL/W
Colour	Aluminium
Material	Natural Aluminium
Diffuser Material	Glass
Shape	Circular
Height	53mm
Diameter	37mm
Cutout Hole Diameter	30mm decking 35mm concrete
Inground	Yes
Depth Required	80mm deck 95mm+300mm drainage Concrete
Indoor	Yes
Outdoor	Yes
Adjustable	No

## Electrical Characteristics

## Fitting

Input Type	Constant Current
Input Current	350mA
Voltage	3,1V
Safety Class	
Power(Watts)	1W
IP Rating	IP67
Light Source	LED built in
LED Type	SMD
LED Brand	Cree
LED Number	1

Cable Length

200cm

F Mark



## Illumination Data

Colour Temperature

3000K

Lumen Output

30lm

Light Efficiency

30lm/W

CRI

85

Illumination Diagram



## Packing Info

Box Length

6,5cm

Box Width

5cm

Box Height

10,5cm

Box Weight

0,188Kg

Pcs/Carton

50

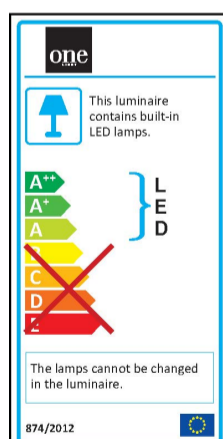
Barcode

5291889045250

HS Code

9405409900

## Energy Label



Warranty

2 Years

Average Lifetime

50000Hours

Weee Directive

Yes

switch to  
**one light!**

one  
LIGHT

