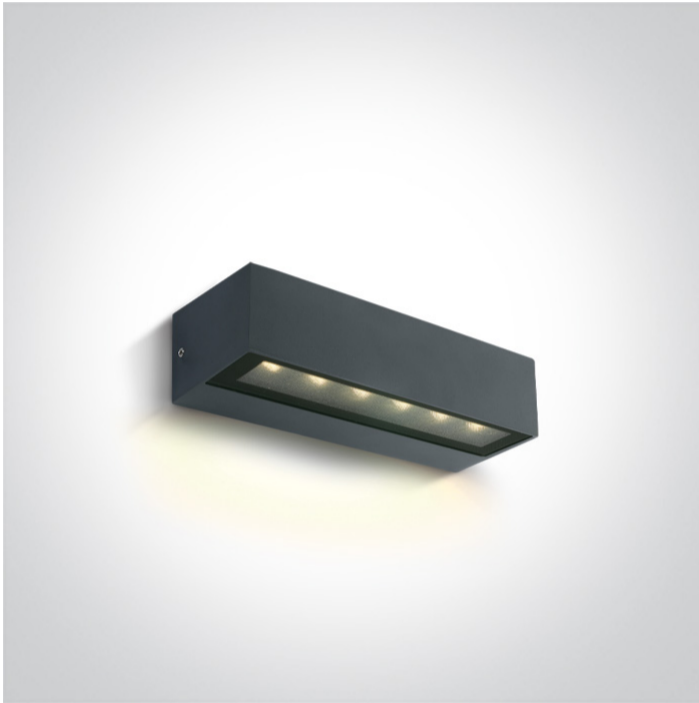


New 2023 Edition 2>Wall & Ceiling LED

67526A1/AN/W



8W Wall light, IP65.

Complete with 350mA driver.

Complies with standard EN60598-1 and any other specific standards.



Downloads



Dimensions



Physical Specification

| | |
|--------------|--------------------|
| Item Group | New 2023 Edition 2 |
| Family | Wall & Ceiling LED |
| Order Code | 67526A1/AN/W |
| Colour | Anthracite |
| Material | Die Cast |
| Shape | Rectangular |
| Length | 222mm |
| Width | 70mm |
| Height | 50mm |
| Surface Wall | Yes |
| Indoor | Yes |
| Outdoor | Yes |

Adjustable No

IK Rating 7

Electrical Characteristics

Gear

Built In

Fitting + Driver

Input Voltage 220-240V

50 Hz Yes

60 Hz Yes

Safety Class 

Power(Watts) 8W

IP Rating IP65

Light Source LED built in

Dimmable No

F Mark 

Fitting

Input Type Constant Current

Input Current 350mA

Voltage 17,92V

Power(Watts) 6,27W

IP Rating IP65

Light Source LED built in

LED Type SMD 3030


LED Brand Osram

Gear


Gear Type Led Driver

Input Voltage 220-240V

50 Hz Yes

| | |
|------------------|---|
| 60 Hz | Yes |
| Power(Watts) | 2,8-7W |
| Power Factor | 0,9 |
| Constant Current | Yes |
| 350mA | 8-20V |
| IP Rating | IP20 |
| Safety Class |  |
| Dimmable | No |
| Housing Material | Plastic |
| Brand | Eaglerise |

Illumination Data

| | |
|----------------------|---|
| Colour Temperature | 3000K |
| Lumen Output | 480lm |
| Light Efficiency | 60lm/W |
| CRI | 80 |
| Illumination Diagram |  |

Packing Info

| | |
|------------|---------------|
| Pcs/Carton | 12 |
| Barcode | 5291889075745 |
| HS Code | 9405413990 |

Certification & Warranty

switch to
one light!

one
LIGHT

