

10 Track Spots > Dark Light Tubes Track Spots

65656AT/W/W



6W SMD LED track spot with, ideal for shops and showrooms.

Complete with 150mA driver.

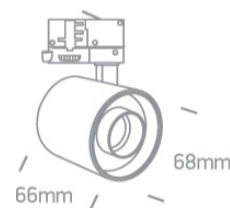
Complies with standard EN60598-1 and any other specific standards.



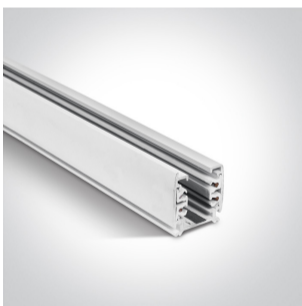
Downloads



Dimensions



Related items



40002A/W




40003A/W


Physical Specification

Item Group	10 Track Spots
Family	Dark Light Tubes Track Spots
Order Code	65656AT/W/W
Colour	White
Material	Aluminium
Shape	Circular
Height	66mm


Diameter	68mm
Track mounted	Yes
Indoor	Yes
Adjustable	2 Directions

Electrical Characteristics


Gear	Built In
Fitting + Driver	
Input Voltage	220-240V
50 Hz	Yes
60 Hz	Yes
Safety Class	
Power(Watts)	6W
IP Rating	IP20
Light Source	LED built in
Dimmable	No

Fitting	
Input Type	Constant Current
Input Current	150mA
Voltage	30V
Safety Class	
Power(Watts)	4,5W
IP Rating	IP20
Light Source	LED built in
LED Type	SMD 5050
LED Brand	Osram

Gear	
Gear Type	Led Driver

Input Voltage	220-240V
50 Hz	Yes
60 Hz	Yes
Power(Watts)	3,75-6W
Power Factor	0,5
Constant Current	Yes
150mA	25-40V
IP Rating	IP20
Safety Class	
Dimmable	No
Housing Material	Plastic
Output Terminal	Connector
Brand	KEGU

Illumination Data

Colour Temperature	3000K
Lumen Output	480lm
Light Efficiency	80lm/W
CRI	90
Beam Angle	40°
Illumination Diagram	
Dark Light	Yes

Packing Info

Pcs/Carton	28
Barcode	5291889067115
HS Code	9405409900

Energy Label



Certification & Warranty

Warranty

3 Years

Weee Directive

Yes

switch to
one light!

one
LIGHT

