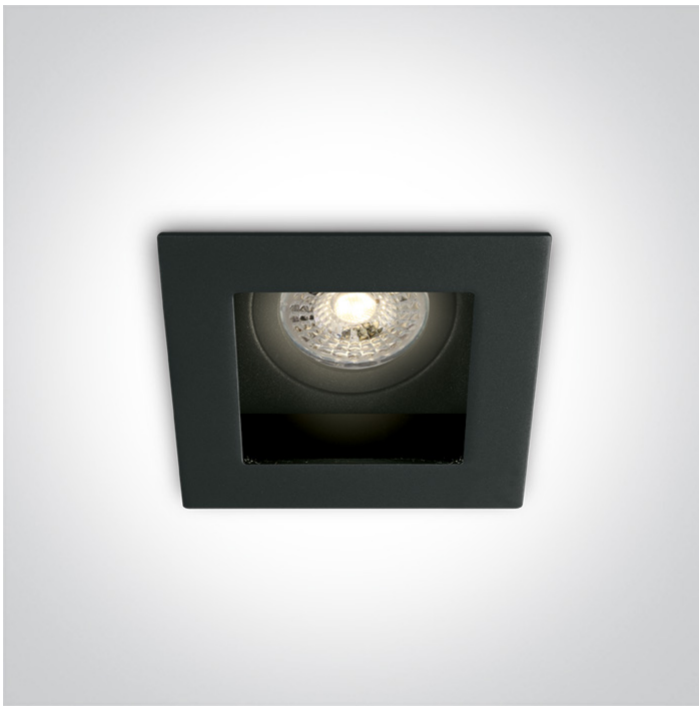


03 Recessed Spots Adjustable > Dark Light Square Metal

## 51105TA/B



Dark Light Recessed Square adjustable MR16 Swivel spot with GU10 lampholder.

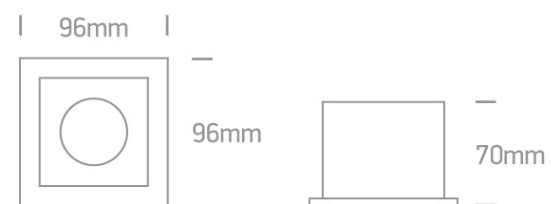
Complies with standard EN60598-1 and any other specific standards.



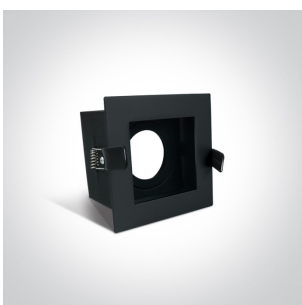
### Downloads



### Dimensions



### Gallery





### Physical Specification


Item Group	03 Recessed Spots Adjustable
Family	Dark Light Square Metal
Order Code	51105TA/B
Colour	Black
Material	Metal
Shape	Rectangular
Length	96mm

Width	96mm
Height	70mm
Cutout Hole Width	80mm
Cutout Hole Length	80mm
Recessed Ceiling	Yes
Depth Required	150mm
Indoor	Yes
Adjustable	1 Direction

### Electrical Characteristics

Gear	No
Fitting + Driver	
Input Voltage	100-240V
50 Hz	Yes
60 Hz	Yes
Safety Class	
Power(Watts)	50W
IP Rating	IP20
Light Source	Replaceable lamp
Lamp Holder	GU10
Number of Lamps	1
Dimmable	N/A
Cable Length	15cm
F Mark	

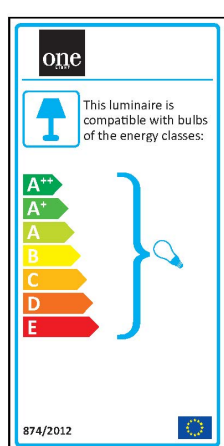
### Illumination Data

Illumination Diagram	
Dark Light	Yes

## Packing Info

Box Length	10,5cm
Box Width	10,5cm
Box Height	9,5cm
Box Weight	0,340kg
Pcs/Carton	36
Barcode	5291889052562
HS Code	9405409900

## Energy Label



## Certification & Warranty

Warranty	5 Years
Weee Directive	Yes

switch to  
**one light!**

one  
LIGHT

