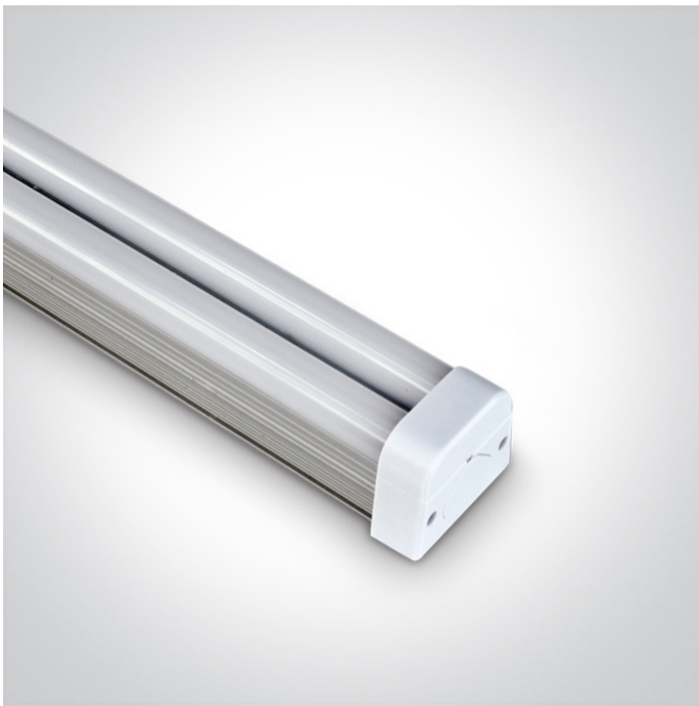


09 LED Strips & Profiles > The 230V Solid Double LED Strip

38215L/W



15W 230V Solid LED Strip, IP20.

Complete with non-dimmable LED driver.

Supplied with 6cm corner cable, 50 cm power cable 1pc connector & 3 fixing clips.

Connect Maximum 5pcs at 110V & 10pcs at 230V

Complies with standard EN60598-1 and any other specific standards.



Downloads



Dimensions



Gallery





Physical Specification

Product Type	Gear
Item Group	09 LED Strips & Profiles
Family	The 230V Solid Double LED Strip
Order Code	38215L/W
Material	Aluminium


Diffuser Material	PC
Shape	Rectangular
Length	570mm
Width	45mm
Height	36mm
Surface Ceiling	Yes
Surface Wall	Yes
Indoor	Yes

Electrical Characteristics


Gear	Built In
Fitting + Driver	
Input Voltage	100-240V
50 Hz	Yes
60 Hz	Yes
Safety Class	
Power(Watts)	15W
IP Rating	IP20
Light Source	LED built in
Dimmable	No
F Mark	

Fitting	
Input Type	Constant Current
Power(Watts)	15W
IP Rating	IP20
Light Source	LED built in

Gear	
Gear Type	Led Driver

Input Voltage	100-240V
50 Hz	Yes
60 Hz	Yes
Power(Watts)	15W
Constant Current	Yes
IP Rating	IP20
Safety Class	
Dimmable	No

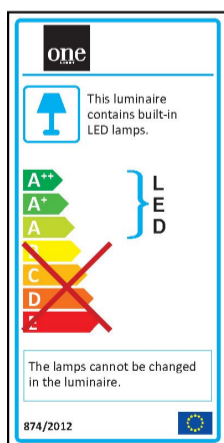
Illumination Data

Colour Temperature	3000K
Lumen Output	1050lm
Light Efficiency	70lm/W
CRI	75
Illumination Diagram	

Packing Info

Pcs/Carton	25
Barcode	5291889031420
HS Code	9405409900

Energy Label



Warranty

2 Years

Wee Directive

Yes

switch to
one light!

one
LIGHT

