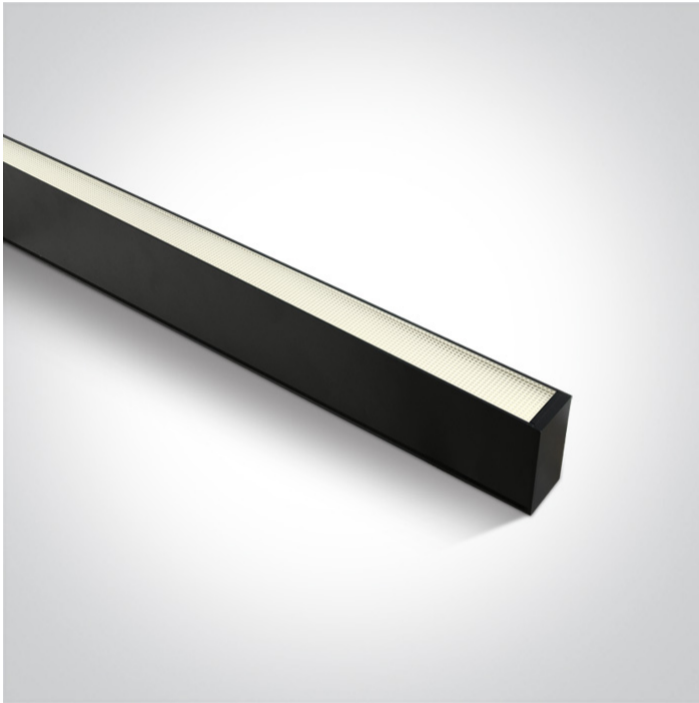


12 Office & Kitchen > LED Linear Profiles

38150A/B/C



40W UGR19 Linear system with diffuser for surface or suspended installation, ideal for offices.

Complete with 1000mA driver

Complies with standard EN60598-1 and any other specific standards.



Downloads



Dimensions



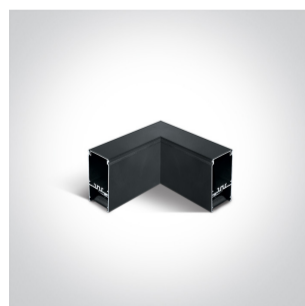
Gallery



Accessories



050170



050170C/B

Related items




38150E/B

Physical Specification

Item Group	12 Office & Kitchen
Family	LED Linear Profiles
Order Code	38150A/B/C
Colour	Black
Material	Aluminium
Shape	Rectangular
Length	1200mm
Width	70mm
Height	35mm
Surface Ceiling	Yes
Suspended Ceiling	Yes
Indoor	Yes
Adjustable	No

Electrical Characteristics

Gear	Built In
Fitting + Driver	
Input Voltage	220-240V
50 Hz	Yes
60 Hz	Yes
Safety Class	
Power(Watts)	40W
IP Rating	IP20

Light Source	LED built in
Dimmable	No
Cable Length	300cm
F Mark	

Fitting

Input Type	Constant Current
Input Current	1000mA
Voltage	36V
Power(Watts)	36W
IP Rating	IP20
Light Source	LED built in
LED Type	SMD 2835
LED Brand	Epistar
LED Number	288

Gear

Gear Type	Led Driver
Input Voltage	220-240V
50 Hz	Yes
60 Hz	Yes
Power(Watts)	30-42W
Power Factor	0,9
Constant Current	Yes
1000mA	30-42V
IP Rating	IP20
Safety Class	
Dimmable	No
Brand	ATG
Protection	0

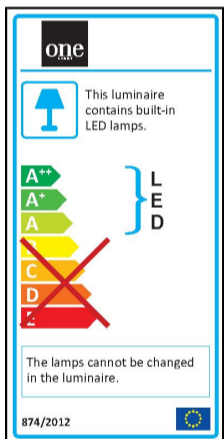
Illumination Data

Colour Temperature	4000K
Lumen Output	3400lm
Light Efficiency	85lm/W
CRI	80
Beam Angle	120°
Illumination Diagram	
UGR	19

Packing Info

Pcs/Carton	12
Barcode	5291889062394
HS Code	9405990090

Energy Label



Certification & Warranty

Warranty	3 Years
----------	---------

switch to
one light!

one
LIGHT

