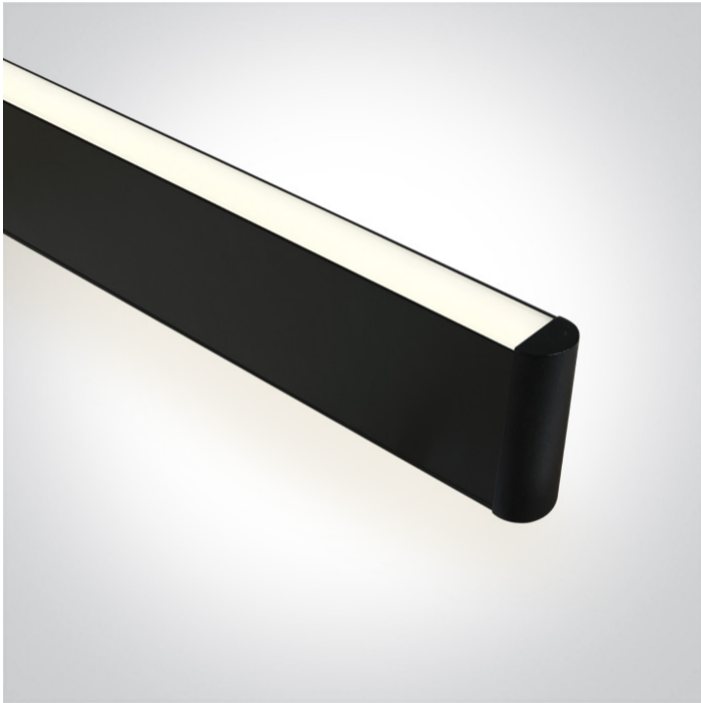


New 2020 Edition 2>Office & Kitchen

## 38140AU/B/C



40W suspended linear diffuser with uplight, ideal for offices.

Complete with 900mA driver and 3m suspension kit.

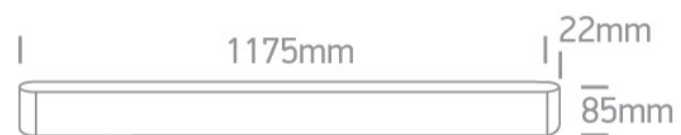
Complies with standard EN60598-1 and any other specific standards.



### Downloads



### Dimensions



### Gallery





### Physical Specification

Item Group	New 2020 Edition 2
Family	Office & Kitchen
Order Code	38140AU/B/C
Colour	Black
Material	Aluminium
Diffuser Material	Plastic
Shape	Rectangular

Length	1175mm
Width	22mm
Height	85mm
Suspended Ceiling	Yes
Indoor	Yes
Adjustable	No

## Electrical Characteristics

Gear	Built In
Fitting + Driver	
Input Voltage	220-240V
50 Hz	Yes
60 Hz	Yes
Safety Class	
Power(Watts)	40W
IP Rating	IP20
Light Source	LED built in
Dimmable	No
F Mark	

Fitting	
Input Type	Constant Current
Input Current	900mA
Voltage	40V
Power(Watts)	36W
IP Rating	IP20
Light Source	LED built in
LED Type	SMD 2835
LED Brand	Epistar

LED Number

144 Up 288 Down

Gear

Gear Type

Led Driver

Input Voltage

220-240V

50 Hz

Yes

60 Hz

Yes

Power(Watts)

27-38W

Power Factor

0,95

Constant Current

Yes

900mA

30-42V

IP Rating

IP20

Safety Class



Dimmable

No

Housing Material

Metal

Output Terminal

Connector

Brand

ATG

Illumination Data

Colour Temperature

4000K

Lumen Output

3600lm

Light Efficiency

90lm/W

CRI

80

Illumination Diagram



Packing Info

Pcs/Carton

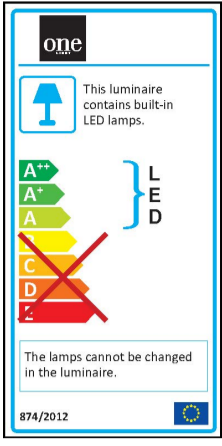
12

Barcode

5291889063896

HS Code

9405409900



Certification & Warranty

Warranty

3 Years

Weee Directive

Yes

switch to  
**one light!**

