

21 Industrial & Floodlights>The High Power IP65 LED Range Single

38136ME/C



Industrial Emergency fitting. Stainless steel clips included.
Polycarbonate body and diffuser.

Supplied with non-dimmable LED driver.

Complies with standard EN60598-1 and any other specific standards.



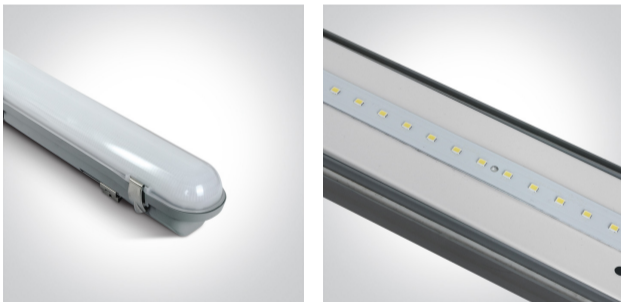
Downloads



Dimensions



Gallery





Physical Specification

Item Group	21 Industrial & Floodlights
Family	The High Power IP65 LED Range Single
Order Code	38136ME/C
Colour	Grey
Material	PC
Diffuser Material	PC
Shape	Rectangular

Length	1215mm
Width	84mm
Height	80mm
Surface Ceiling	Yes
Surface Wall	Yes
Indoor	Yes
Outdoor	Yes
Adjustable	No
IK Rating	8


Electrical Characteristics

Gear	Built In
Fitting + Driver	
Input Voltage	220-240V
50 Hz	Yes
60 Hz	Yes
Safety Class	
Power(Watts)	30W
IP Rating	IP65
Light Source	LED built in
Dimmable	No
F Mark	

Fitting	
Input Type	Constant Current
Input Current	500mA
Voltage	54V
Power(Watts)	27W
IP Rating	IP65
Light Source	LED built in

LED Type	SMD 2835
LED Brand	Bridgelux
LED Number	108

Gear

Gear Type	Led Driver
Input Voltage	220-240V
50 Hz	Yes
60 Hz	Yes
Power(Watts)	10-27W
Power Factor	0,9
Constant Current	Yes
500mA	20-54V
IP Rating	IP20
Safety Class	
Dimmable	No
Housing Material	Plastic
Output Terminal	Connector
Brand	Tridonic
Battery Capacity	1500mAh
Battery Voltage	6.4V
Operation Time	3hours
Charging Time	16hours
Maintained	Yes
Non Maintained	Yes

Illumination Data

Colour Temperature	4000K
Lumen Output	3000lm
Light Efficiency	100lm/W
CRI	80



Packing Info

Box Length	122cm
Box Width	8,3cm
Box Height	9cm
Box Weight	1.633kg
Pcs/Carton	9
Barcode	5291889073772
HS Code	9405114090

Certification & Warranty

Warranty	3 Years
Weee Directive	Yes

switch to
one light!

one
LIGHT

