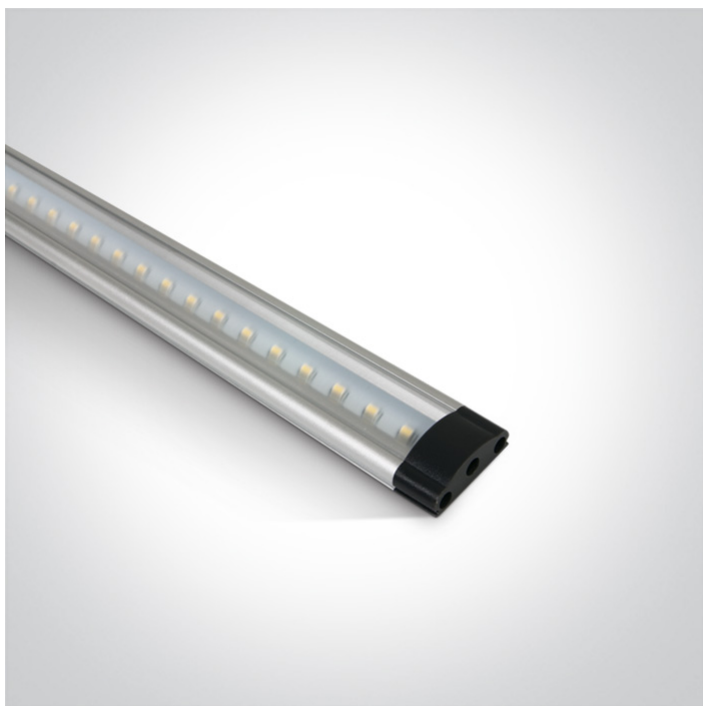


09 LED Strips & Profiles > The LED Shelf System

## 38110/W



10W LED Shelf system, IP20 .

Requires 24V DC constant voltage LED driver.

Complies with standard EN60598-1 and any other specific standards.



### Downloads



### Dimensions



### Accessories



38101A



38101B



38101C



38101D



38102A



38102B



38102C

## Physical Specification

Product Type	Gear
Item Group	09 LED Strips & Profiles
Family	The LED Shelf System
Order Code	38110/W
Material	Aluminium
Diffuser Material	PC
Shape	Rectangular
Length	1000mm
Width	25mm
Height	9mm
Surface Ceiling	Yes
Surface Wall	Yes
Indoor	Yes


## Electrical Characteristics

### Fitting

Input Type	Constant Voltage
Input Voltage	24V DC
Safety Class	
Power(Watts)	10W
IP Rating	IP20
Light Source	LED built in
LED Type	SMD 3014
LED Brand	Epistar
F Mark	

## Illumination Data

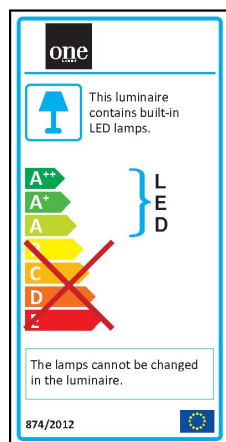
Colour Temperature	3000K
--------------------	-------

Lumen Output	750lm
Light Efficiency	75lm/W
CRI	80
Beam Angle	90°
Illumination Diagram	

## Packing Info

Box Length	100cm
Box Width	3cm
Box Height	3,5cm
Box Weight	0,18Kg
Pcs/Carton	25
Barcode	5291889038801
HS Code	9405409900

## Energy Label



## Certification & Warranty

Warranty

2 Years

Wee Directive

Yes

switch to  
**one light!**

one  
LIGHT

