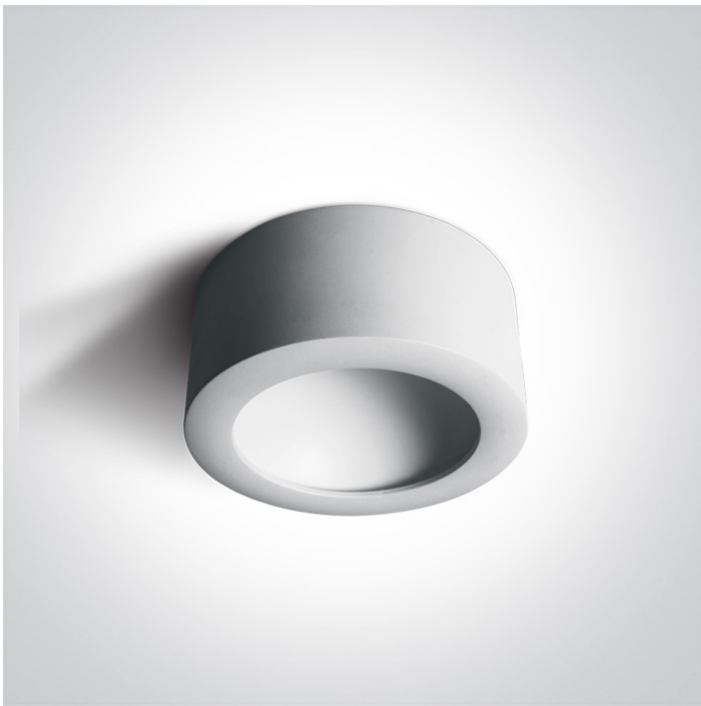


14 Wall & Ceiling LED > The Hidden Light Cylinders Range

**12116FD/W/W**



16W LED Hidden Light Cylinders Range.

Complete with non-dimmable LED driver.

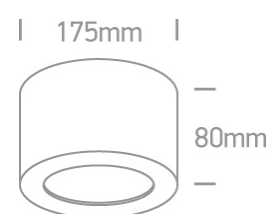
Complies with standard EN60598-1 and any other specific standards.



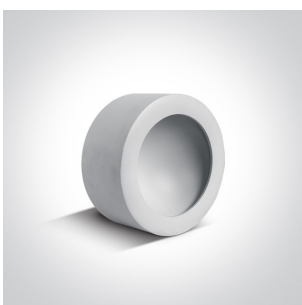
#### Downloads



#### Dimensions



#### Gallery



#### Physical Specification

Item Group	14 Wall & Ceiling LED
Family	The Hidden Light Cylinders Range
Order Code	12116FD/W/W
Colour	White
Material	Die Cast
Shape	Circular
Height	80mm

Diameter	175mm
Surface Ceiling	Yes
Indoor	Yes
Adjustable	No

#### Electrical Characteristics

Gear	Built In
------	----------

#### Fitting + Driver

Input Voltage	220-240V
50 Hz	Yes
60 Hz	Yes
Safety Class	
Power(Watts)	16W
IP Rating	IP20
Light Source	LED built in
Dimmable	No
F Mark	

#### Fitting


Input Type	Constant Current
Input Current	300mA
Voltage	50V
Power(Watts)	15W
IP Rating	IP20
Light Source	LED built in
LED Type	SMD 2835
LED Brand	Sanan

#### Gear

Gear Type	Led Driver
-----------	------------

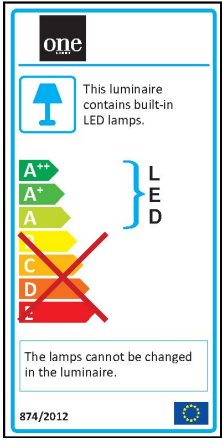
Input Voltage	220-240V
50 Hz	Yes
60 Hz	Yes
Power(Watts)	13,5-18W
Power Factor	0,9
Constant Current	Yes
300mA	45-60V
IP Rating	IP20
Safety Class	
Dimmable	No
Housing Material	Plastic
Brand	KEGU

#### Illumination Data

Colour Temperature	3000K
Lumen Output	1100lm
Light Efficiency	68,75lm/W
CRI	80
Illumination Diagram	
Dark Light	Yes

#### Packing Info

Box Length	18cm
Box Width	18cm
Box Height	8,5cm
Box Weight	0,94Kg
Pcs/Carton	20
Barcode	5291889053460
HS Code	9405409900



Certification & Warranty

Warranty

2 Years

Weee Directive

Yes

switch to  
**one light!**

