

04 Recessed Spots Adjustable LED>The Trimless COB Spot Die cast

11112T/W/W



12W COB LED recessed trimless adjustable spot, suitable for indoor applications, IP20.

Requires 700mA constant current LED driver.

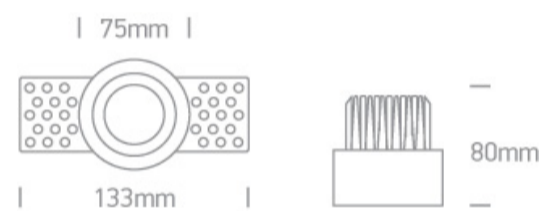
Complies with standard EN60598-1 and any other specific standards.



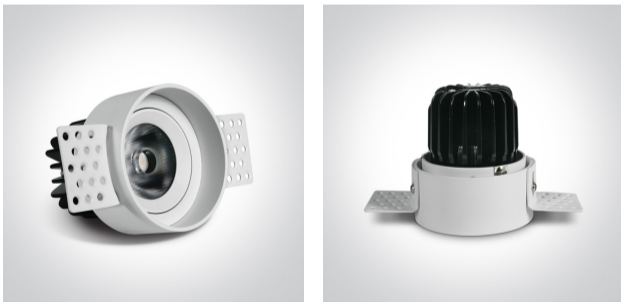
Downloads



Dimensions



Gallery



Must be ordered separately



89015A

Related items



89015AT


Physical Specification

Item Group	04 Recessed Spots Adjustable LED
Family	The Trimless COB Spot Die cast
Order Code	11112T/W/W
Colour	White
Material	Die Cast
Shape	Circular
Height	80mm
Diameter	75mm
Cutout Hole Diameter	75mm
Recessed trimless ceiling	Yes
Depth Required	100mm
Indoor	Yes
Adjustable	2 Directions


Electrical Characteristics

Fitting

Input Type	Constant Current
Input Current	700mA
Safety Class	III
Power(Watts)	12W
IP Rating	IP20
Light Source	LED built in
LED Type	COB

LED Brand	Bridgelux
LED Number	1
Cable Length	40cm
F Mark	

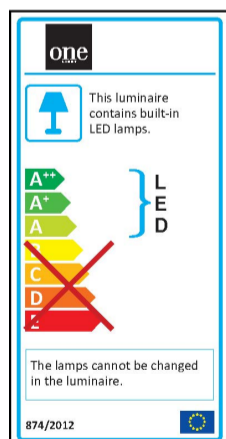
Illumination Data

Colour Temperature	3000K
Lumen Output	1100lm
Light Efficiency	91,67lm/W
CRI	80
Beam Angle	38°
Illumination Diagram	
Dark Light	Yes

Packing Info

Pcs/Carton	40
Barcode	5291889034933
HS Code	9405409900

Energy Label



Warranty

3 Years

Weee Directive

Yes

switch to
one light!

one
LIGHT

