

02 Recessed Spots Fixed LED>Fixed Spots

## 10103L/W/35



3x1W LED recessed spot IP20.

Requires 350mA driver.

Complies with standard EN60598-1 and any other specific standards.



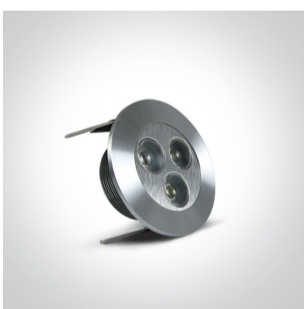
### Downloads



### Dimensions



### Gallery



### Must be ordered separately



89004

## Physical Specification

Item Group	02 Recessed Spots Fixed LED
Family	Fixed Spots
Order Code	10103L/W/35
Colour	Aluminium
Material	Natural Aluminium
Shape	Circular
Height	35mm
Diameter	72mm
Cutout Hole Diameter	60mm
Recessed Ceiling	Yes
Depth Required	40mm
Indoor	Yes
Adjustable	No


## Electrical Characteristics

### Fitting

Input Type	Constant Current
Input Current	350mA
Safety Class	
Power(Watts)	3x1W
IP Rating	IP20
Light Source	LED built in
LED Number	3
Cable Length	40cm
F Mark	

## Illumination Data

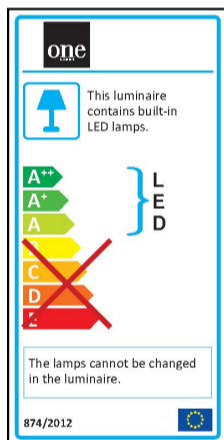
Colour Temperature	3000K
--------------------	-------

Lumen Output	135lm
Light Efficiency	45lm/W
Beam Angle	35°
Illumination Diagram	

## Packing Info

Box Length	8cm
Box Width	8cm
Box Height	4,5cm
Box Weight	0,137kg
Pcs/Carton	100
Barcode	5291889020431
HS Code	9405409900

## Energy Label



## Certification & Warranty

Warranty	2 Years
----------	---------

switch to  
**one light!**

one  
LIGHT

