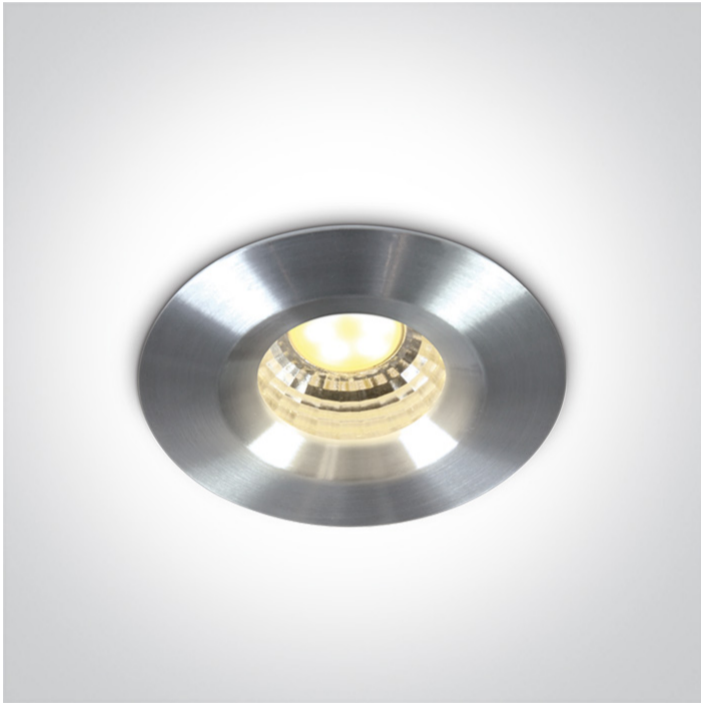


02 Recessed Spots Fixed LED>The 1W/3W LED Spots

10103B/AL/W



1W/3W COB LED recessed spot IP20.

Requires 350mA/700mA driver.

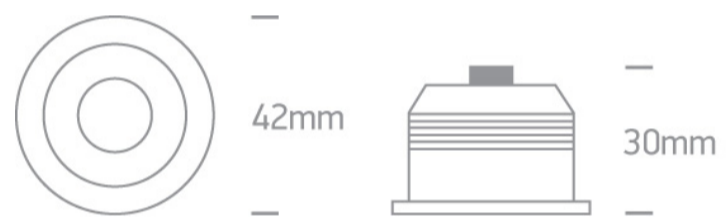
Complies with standard EN60598-1 and any other specific standards.



Downloads



Dimensions



Gallery



Must be ordered separately



89004





89004A

Physical Specification


| | |
|----------------------|-----------------------------|
| Item Group | 02 Recessed Spots Fixed LED |
| Family | The 1W/3W LED Spots |
| Order Code | 10103B/AL/W |
| Colour | Aluminium |
| Material | Aluminium |
| Shape | Circular |
| Height | 30mm |
| Diameter | 42mm |
| Cutout Hole Diameter | 35mm |
| Recessed Ceiling | Yes |
| Depth Required | 50mm |
| Indoor | Yes |
| Adjustable | No |

Electrical Characteristics

Fitting

| | |
|---------------|---|
| Input Type | Constant Current |
| Input Current | 350mA/700mA |
| Safety Class |  |
| Power(Watts) | 1W/3W |
| IP Rating | IP20 |
| Light Source | LED built in |
| LED Brand | Epistar |
| LED Number | 1 |
| Cable Length | 40cm |
| F Mark |  |

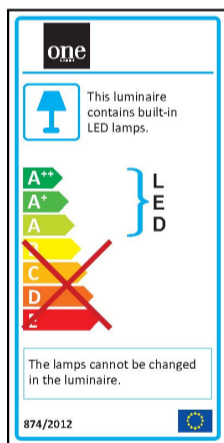
Illumination Data

| | |
|----------------------|---|
| Colour Temperature | 3000K |
| Lumen Output | 200lm@700mA |
| Light Efficiency | 66,67lm/W |
| CRI | 80 |
| Beam Angle | 40° |
| Illumination Diagram |  |

Packing Info

| | |
|------------|---------------|
| Box Length | 9cm |
| Box Width | 6cm |
| Box Height | 5,5cm |
| Box Weight | 0,074kg |
| Pcs/Carton | 100 |
| Barcode | 5291889042440 |
| HS Code | 9405409900 |

Energy Label



Warranty

2 Years

Weee Directive

Yes

switch to
one light!

one
LIGHT

