



COMMERCIAL PRODUCT CATALOG

TABLE OF CONTENTS

STATE COMMERCIAL PRODUCT CATALOG

The Eliminator™	1	COMMERCIAL TANKLESS	
PermaGlas® Ultra Coat™	1	Commercial Rack System.....	21-22
iCOMM™ Remote Monitoring System	2	Tankless High Efficiency Condensing	23
Building Management System BACnet & Modbus interface	3	Tankless Heavy-Duty	24
COMMERCIAL GAS		COMMERCIAL ELECTRIC	
Modulating Ultra Force®	5	Light-Service.....	26
Ultra Force® LV	6	Patriot®	27-28
Force® 90 HE Power Direct Vent.....	7	Sandblaster® CSB.....	29
Force® 90 HE Power Vent.....	8	Statesman.....	30-31
Unrivaled Venting Flexibility	9	Large Volume Electric SEV/SEH	32-34
Polaris® High Efficiency	10	COMMERCIAL HEAT PUMP	
TX1 Integrated Tankless on Tank.....	11	CHP Fully Integrated Heat Pump	36
Sandblaster® Self Cleaning	12	COMMERCIAL STORAGE TANKS	
Sandblaster® SBL Ultra-Low NOx	13	Factory Jacketed & Insulated Storage Tanks	38-39
Sandblaster® Light Duty	14	Standard Jacketed Storage Tanks.....	40
Sandblaster® Light Duty Ultra-Low NOx	15	Uninsulated Standard Stock Bare Storage Tanks	41
Sandblaster® Force Power Direct Vent.....	16	Heavy-Duty Large Volume Storage Tanks.....	42-43
Titan® Power Burner	17		
COMMERCIAL OIL-FIRED			
Titan® Power Oil Burner Low NOx.....	19		



For more than 70 years, State has committed to providing its valued partners with high quality products built to perform. State's comprehensive commercial product family is no exception. With products ranging from standard gas and electric, to high efficiency, hybrid and tankless, State can offer the right product for every job.

We view this accomplishment as a mere beginning, and will continue to work towards greater things--newer and more durable technologies. For everyone here at State, it's never been just about outdoing what we have achieved in the past—it's always been about growing beyond our expectations for the future. Solid. State.



THE ELIMINATOR™

SELF-CLEANING TECHNOLOGY



STATE DURABILITY & QUALITY... ENGINEERED INTO EVERY PRODUCT STARTING WITH PREMIUM COMPONENTS

As deposits of lime and other sediments accumulate inside the tank, they form a barrier between the burner and the water, concentrating heat around the critical weld areas. The result is reduced energy efficiency, higher operating costs, and greater risk of premature tank leaks.

The Eliminator directs incoming cold water under pressure to sweep the bottom of the tank to keep sediment moving so it doesn't accumulate. With the Eliminator, every Sandblaster® water heater can be expected to maintain its rated efficiency longer and deliver reliable service year after year.

PERMAGLAS® ULTRA COAT™ GLASS COATING



PermaGlas Ultra Coat is State's exclusive "slush coat" process that heat-bonds glass to each tank's inner surface after all connections and seams have been welded. Because of this, there is no chance of "weld burn" that can burn away normal glass lining and expose bare steel to water.



PermaGlas Ultra Coat provides protection for the tank's top, bottom, and outer shell and all weld seams.



All welds completed prior to PermaGlas Ultra Coat.



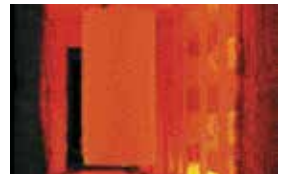
Once tanks are filled with PermaGlas, they are rotated (computer controlled) for precise, even coating.



Technician removes hand-hole clean-out to prepare it for the next step.



Tanks are then rotated further, allowing the excess PermaGlas to drain from the tank.



After pre-drying in 200°F ovens, the tanks are then fired to 1,600°F, fusing the PermaGlas to the steel tank.

iCOMM™ REMOTE MONITORING SYSTEM

iCOMM CONNECTIVITY

NOW STANDARD ON ALL SUF MODELS

The iCOMM connectivity service allows users to view and manage their water heater operation remotely. Detailed information on current status, usage history, set points and other key parameters is available within the iCOMM function on the State Water Heaters app. Fault and alert information is communicated via text message and/or e-mail providing valuable information needed to restore the unit to proper operation.

iCOMM now can be maintained and managed from the convenience of the State app available for iPhone and Android. Get real time information delivered to your phone directly from your water heater. There are no subscription or app fees related to the iCOMM connectivity service.



iCOMM SYSTEM REQUIREMENTS

- Standard equipment on Ultra Force® SUF 120-500 models with touch display (Series 300 to present)
- Internet connection via Wi-Fi or Ethernet.
- The latest version of the State app (available for iOS and Android devices).

iCOMM BENEFITS

- iCOMM connectivity helps ensure businesses have the hot water needed.
- Contractors can stay connected to their customers by monitoring operation and receiving fault notifications remotely.
- Operators with multiple locations can manage their fleet of water heaters remotely.

iCOMM FEATURES

- Remote monitoring via Wi-Fi or Ethernet cable. Once the unit is registered to iCOMM on the app, registered users can view current water heater status and all pertinent information available from the convenience of their phone.
- Automated service notifications in the event of any alarm or fault conditions. Registered users are notified by text and/or email.
- Appliance run time shows the total on time, cycle count and burner on time.
- Custom notification settings allow for alerts when tank temperatures are above or below user parameters.
- Users can view one or multiple water heaters associated with their user account.

COMMERCIAL WATER SYSTEMS BUILDING MANAGEMENT SYSTEM BACNET & MODBUS INTERFACE



MODELS:

- ETH-1000
Ethernet Connection
- XLTR-1000
Serial RS-485 Connection

INTRODUCING THE BMS GATEWAY FOR CONTROL OF STATE WATER HEATERS

Connect your State water heater to your building management system using the new Millennium control from ICC* (Industrial Control Communications, Inc.)

- Works with Force, SSE/SEV/SEH
- Use the ICC Control to enable/disable the water heater
- Change Temperature Set points and differentials
- Two models with four different configurations to connect to BACnet and Modbus thernet and Serial RS485 versions available
- 2 wire or 4 wire RS485 Network
- Power can be supplied via the USB cable, as a 7-24
- VDC input on the main terminal Block, or via IEEE 802.3af Power over Ethernet (PoE on ETH-1000 only)
- Configure protocols, network characteristics, and client/server object definitions
- Graphically interact with the internal database in real-time via USB connection
- Automatically discover and configure IP settings
- Ethernet gateways connected to the current subnet
- Update Firmware

ICC ENERGY MANAGEMENT INTERFACES			
PROTOCOL	PART NUMBER	CONNECTION TYPE	APPLICATION
BACnet	100121264	Serial (RS485)	Commercial Gas - Force 90 and Modulating Ultra Force-100
	100131365		Commercial Electric SSE, SEV, SEH
	100131370	Ethernet (IP)	Commercial Gas - Force 90 and Modulating Ultra Force-100
	100131371		Commercial Electric, SSE, SEV, SEH
Modbus	100131371	Serial (RS485)	Commercial Gas - Force 90 and Modulating Ultra Force-100
	100131368		Commercial Electric, SSE, SEV, SEH
	100131373	Ethernet (IP)	Commercial Gas - Force 90 and Modulating Ultra Force-100
	100131374		Commercial Electric, SSE, SEV, SEH

- Heater connection wiring supplied with unit
- For questions on this product Call 888-928-3702 Opt 1
- RTU and serial connect via RS485
- Ethernet and IP connect via RJ45



STATE
COMMERCIAL GAS
WATER HEATERS



COMMERCIAL GAS MODULATING ULTRA FORCE®



Up to 98% Efficient

Intelligent Control System with Touch Screen Display

- Exclusive State designed control system
- Provides detailed water heater status information
- Precise temperature control adjustable from 90 to 180 degrees
- Built-in diagnostics
- Run history information
- iCOMM remote monitoring on-board with Wi-Fi connectivity

Submerged Combustion Chamber, with Helical Heat Exchanger Coil

- Positioned in center of tank, surrounded by water to virtually eliminate radiant heat loss from chamber
- Direct spark ignition
- Spiral heat exchanger keeps hot burner gases swirling, uses centrifugal force to maximize efficiency of heat transfer to water in tank
- Spiral heat exchanger reduces lime scale from forming on water-side surfaces, which maintains energy efficiency over time

Modulating Pre-Mix Powered Burner

- Top-mounted down-fired burner modulates to match demand providing optimum fuel efficiency, and quiet operation.

Ultra-Low NOx Operation

- Complies with SCAQMD Rule 1146.2 and other Air Quality Management Districts with similar requirements for NOx emissions of less than 14 ng/J or 20 ppm.

Power Anodes Standard on All Models

- Provides long-lasting tank protection in varying water conditions
- Powered anodes are non-sacrificial
- Automatically adjusts output needed to properly protect the tank

3-Year Limited Tank and 1-Year Limited Parts Warranty

- For complete warranty information, consult written warranty or go to statewaterheaters.com.



GAS-FIRED



Model Number	Gallon Capacity	BTU/H Input	Recovery GPH Temperature Rise			Dimensions in Inches		Approx. Shipping Weight (lbs)	
			40°F	100°F	140°F	Height	Diameter	Standard	ASME
SUF60 120NE	60	120,000	345	138	99	55.5	27.75	460	490
SUF100 150NE	100	150,000	445	178	127	76	27.75	523	553
SUF100 199NE	100	199,900	588	235	168	76	27.75	523	553
SUF100 250NE	100	250,000	727	291	208	76	27.75	523	553
SUF119 300NE	119	300,000	873	349	249	75.75	33.12	855	855
SUF119 400NE	119	399,900	1151	460	329	75.75	33.12	855	855
SUF119 500NE	119	499,900	1439	576	411	75.75	33.12	855	855

Optional Concentric Vent Kits 100111100 (SUF60-120 through SUF100-250 models).

100113124 (SUF119 300-through SUF119-500 models).

Electrical characteristics- 120V-60 Hz A.C., 5.0A.

"A" in the model number represents ASME construction.

Models are certified from sea level to 10,100 ft. elevation.

COMMERCIAL GAS ULTRA FORCE® LV (LARGE VOLUME)



Up to 96% Efficient

Intelligent Control System with Touch Screen Display

- Exclusive State designed control system
- Provides detailed water heater status information
- Precise temperature control adjustable from 90 to 180 degrees
- Built-in diagnostics
- Run history information
- iCOMM remote monitoring on-board with Wi-Fi connectivity

Submerged Combustion Chamber, with Helical Heat Exchanger Coil

- Positioned in center of tank, surrounded by water to virtually eliminate radiant heat loss from chamber
- Direct spark ignition
- Spiral heat exchanger keeps hot burner gases swirling, uses centrifugal force to maximize efficiency of heat transfer to water in tank
- Spiral heat exchanger reduces lime scale from forming on water-side surfaces, which maintains energy efficiency over time

Modulating Pre-Mix Powered Burner

- Top-mounted down-fired burner modulates to match demand providing optimum fuel efficiency, and quiet operation

Ultra-Low NOx Operation

- Complies with SCAQMD Rule 1146.2 and other Air Quality Management Districts with similar requirements for NOx emissions of less than 14 ng/J or 20 ppm

Power Anodes Standard on All Models

- Provides long-lasting tank protection in varying water conditions
- Powered anodes are non-sacrificial
- Automatically adjusts output needed to properly protect the tank

3-Year Limited Tank and 1-Year Limited Parts Warranty

- For complete warranty information, consult written warranty or go to statewaterheaters.com



(All models except SUFL-220-500A)



Model Number	Gallon Capacity	BTU/H Input	Recovery GPH Temperature Rise			Dimensions in Inches		Approx. Shipping Weight (lbs) ASME
			40°F	100°F	140°F	Height	Diameter	
SUFL-250-150A	250	150,000	436	175	125	91-1/2	42-1/8	1125
SUFL-250-199A	250	199,900	575	230	164	91-1/2	42-1/8	1125
SUFL-250-250A	250	250,000	712	285	203	91-1/2	42-1/8	1125
SUFL-220-300A	220	300,000	855	342	244	91-1/2	42-1/8	1420
SUFL-220-400A	220	399,900	1127	451	322	91-1/2	42-1/8	1420
SUFL-220-500A	220	499,900	1394	557	398	91-1/2	42-1/8	1420

Optional Concentric Vent Kits 100111100 (SUFL-250-150A through SUFL-250-250A models), 100113124 (SUFL-220-300A through SUFL-220-500A models).
Optional Condensate Neutralization Kits available. 100112380 (SUFL-250-150A through SUFL-250-199A models), 100112381 (SUFL-250-250A through SUFL-220-500A models).

Electrical characteristics- 120V-60 Hz A.C., 5.0A.

"A" in the model number represents ASME construction.

Models are certified from sea level to 10,100 ft. elevation.

COMMERCIAL GAS FORCE® 90+ POWER DIRECT VENT



High Efficiency Condensing Design

- Operates at 96% thermal efficiency which saves money on operating costs compared to a standard 80% efficient gas water heater

Intelligent Control System with LCD Display

- Exclusive State designed control system
- Provides detailed water heater status information
- Precise temperature control
- Built-in diagnostics
- Run history information

Helical Internal Heat Exchanger

- Spiral heat exchanger keeps hot combustion gases in the tank longer to lengthen the heat transfer cycle
- Positioned in the center of the tank for more even heat distribution

Advanced Electronic Control

- Touch screen display with precise temperature control, built in diagnostics and status information.

Ultra-Low NOx Operation

- Complies with SCAQMD Rule 1146.2 and other Air Quality Management Districts with similar requirements for NOx emissions of less than 14 ng/J or 20 ppm.

Power Direct Vent Design

- Combined vertical and horizontal runs terminating through an outside wall. Vents using PVC, CPVC, or polypropylene piping. Canadian installations require ULC S636 approved pipe for venting.
- 2" pipe, vents up to 45 equivalent feet
- 3" pipe, vents up to 128 equivalent feet

Side-Mounted Hot and Cold Recirculating Taps

- Allows Force® 90+ to be installed as part of combination space heating/water heating applications.

3-Year Limited Tank and 1-Year Limited Parts Warranty

- For complete warranty information, consult written warranty or go to statewaterheaters.com.



Model Number	Gallon Capacity	BTU/H Input	Recovery GPH Temperature Rise			Dimensions in Inches		Approx. Shipping Weight (lbs)
			40°F	100°F	140°F	Height	Diameter	
SHE50	50	100,000	291	115	83	66-3/4	22	264
SHE75	75	100,000	291	115	83	65-1/4	27-3/4	382

Standard model certified from sea level to 10,100 ft. elevation.
Optional Concentric Vent Kits (100111100) and Condensate Neutralization Kits (100112380).

COMMERCIAL GAS FORCE® 90



Helical Coil Heat Exchanger

- Submerged heat exchanger provides much greater heat transfer surface than standard straight flue tube
- Produces 94% thermal efficiency, which saves money on operating costs, and increases hot water output compared to standard-efficiency water heaters

Versatile Power Vent Design

- System allows combined vertical and horizontal vent runs, terminating through an outside wall using Schedule 40 PVC, CPVC, or polypropylene pipe
- 2" pipe vents up to 25 equivalent feet
- 3" pipe vents up to 65 equivalent feet
- 4" pipe vents up to 128 equivalent feet

High Output With Small Footprint

- 22" diameter, combined with 94% efficiency, 76,000 BTU input means FORCE 90 can be installed in less space than a larger 75-gallon unit with equal or better performance

PermaGlas® Ultra Coat Glass Lining

- State exclusive process provides superior protection against corrosion
- Protects all interior tank surfaces including inside and outside of helical heat exchanger

**Intelli-Vent™ Gas Control

- Equipped with long-lasting silicon nitride hot surface ignitor—no standing pilot
- Advanced electronics for more precise control of water temperature and simplified system diagnostics
- 180°F maximum temperature setting

Side-Mounted Hot And Cold Recirculating Taps

- Allows FORCE 90 to be installed as part of combination space heating/water heating applications, or any system requiring a recirculating hot water loop
- Plugs for the recirculating taps are factory installed

Two Heavy-Duty Anode Rods

- Provide advanced protection against corrosion

3-Year Limited Tank and 1-Year Limited Parts Warranty

- For complete warranty information, consult written warranty or go to statewaterheaters.com.

**Intelli-Vent™ is a registered trademark of Emerson Electric Company

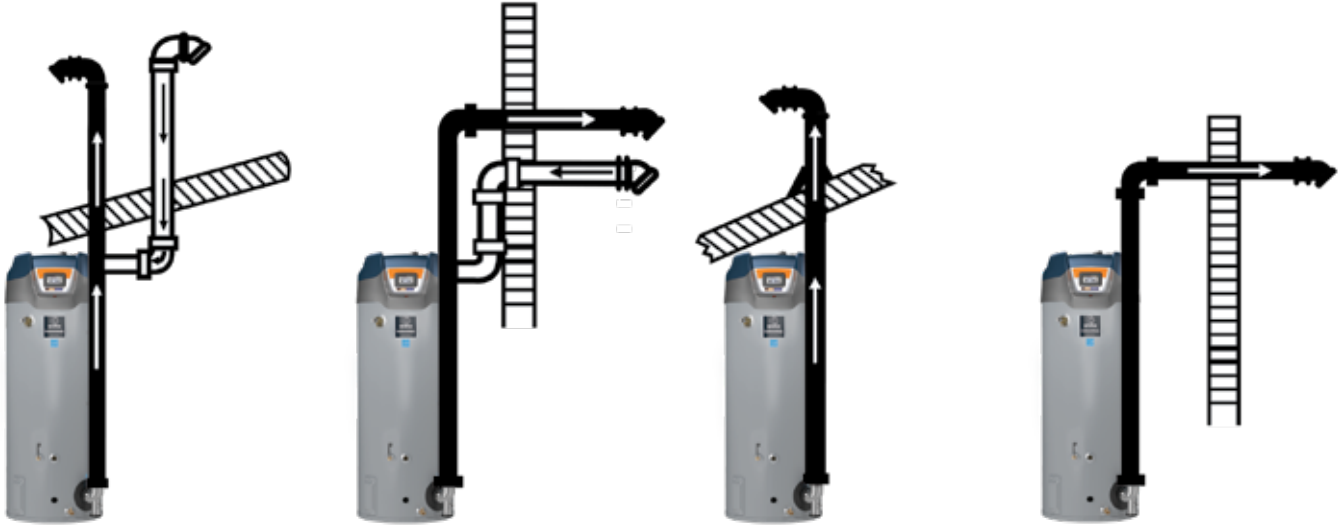


Model Number	Gallon Capacity	BTU/H Input	Recovery GPH Temperature Rise			Dimensions in Inches		Approx. Shipping Weight (lbs)
			40°F	100°F	140°F	Height	Diameter	
SHE50 76NE	50	76,000	215	86	61	71-1/8	22	225

Available in natural gas only.
Can be installed up to 5,300 feet without alteration.
Use SMR S54 for installation up to 10,100 Ft.

Unrivaled Venting Flexibility

The modulating ULTRA FORCE® features power-vent and power direct vent design, allowing combustion air to be drawn from the equipment room conventionally or directly from the outdoor atmosphere through a sealed intake air pipe. Vent systems can be terminated vertically through the ceiling or horizontally through a sidewall. Front located exhaust and condensate connections allow for easy installation and serviceability.



SEALED DIRECT
VENT VERTICAL

SEALED DIRECT
VENT SIDEWALL

INDOOR CONVENTIONAL
VERTICAL

INDOOR CONVENTIONAL
SIDEWALL

See instruction manual for complete venting instructions and allowable vents lengths.

Common Venting Kit Available

Up to three Modulating Ultra Force units can be common vented allowing for fewer wall penetrations, reduced installation costs, and greater flexibility in venting materials.



COMMERCIAL GAS POLARIS® HIGH EFFICIENCY



Condensing Design

- Operates at up to 96% thermal efficiency which saves money on operating costs compared to a standard 80% efficient gas water heater.
- Helical internal heat exchanger keeps hot combustion gases in the tank longer to extract more heat into the water.
- Modulating burner maintains high efficiency operation at lower input rates.

Stainless Steel Construction

- Tank and helical heat exchanger are constructed from 444 stainless steel for excellent corrosion resistance without the need for an anode.

Ultra-Low NOx Operation

- Complies with SCAQMD Rule 1146.2 and other air quality management districts with similar requirements for Ultra-Low NOx emissions requirements of 14 ng/l or 20 PPM.

Quiet Operation

- Quiet blower and burner minimize noise.

Power Direct Vent Design

- Direct vent using PVC (solid core only), CPVC or Polypropylene through a sidewall or roof.
- Optional concentric vent kit

Advanced Electronic Control

- Touch screen display with precise temperature control, built in diagnostics and status information.

Side-Mounted Hot And Cold Recirculating Taps

- Allows Polaris to be installed as part of combination space heating/water heating applications, or any system requiring a recirculating hot water loop.

3-Year Limited Tank and 1-Year Limited Parts Warranty

- For complete information, consult written warranty or go to statewaterheaters.com.

Model Number	Gallon Capacity	BTU/h Input Gallon Per Hour	Thermal Efficiency	Recovery @ 100° Rise Gallon Per Hour	Dimensions in Inches		Vent Connection	1" Water Connections		T&P	Gas Supply*	Approx. Shipping Weight (lbs)
					Height	Diameter						
SPC 34 130 NE	34	130,000	96%	149	48-1/2	22	2 or 3	15-3/4	40-1/2	41	6-3/8	150
SPC 34 150 NE	34	150,000	94%	171	48-1/2	22	2 or 3	15-3/4	40-1/2	41	6-3/8	150
SPC 50 130 NE	50	130,000	95%	149	62-3/8	22	2 or 3	15-3/4	54-1/2	55	6-3/8	176
SPC 50 150 NE	50	150,000	95%	171	63-3/4	22	2 or 3	15-3/4	55-3/4	56-1/4	6-3/8	180
SPC 50 175 NE	50	175,000	96%	200	63-3/4	22	3	15-3/4	55-3/4	56-1/4	6-3/8	180
SPC 50 199 NE	50	199,000	96%	227	63-3/4	22	3	15-3/4	55-3/4	56-1/4	6-3/8	180

Available in Propane (LP) gas. For Propane (LP) change NE to PE.
Models certified for sea level to 7,700 ft. elevation.

COMMERCIAL GAS TX1 INTEGRATED TANKLESS ON TANK



Delivers 96% Thermal Efficiency

Ultra-Low NOx Operation

- Complies with SCAQMD Rule 1146.2 and other Air Quality Management Districts with similar requirements for ultra low-NOx emissions

Integrated CT-199 Commercial Tankless

- Modulating burner
- Primary heat exchanger constructed of commercial grade copper
- Secondary heat exchanger constructed of 316 grade stainless steel
- Advanced electronic control with integrated diagnostics
- 185°F maximum temperature

119 Gallon Storage Tank

- 4.1 GPM pump
- Glass lined tank
- Multiple anodes to protect the tank
- Front water inlet and top water outlet

6 Year Limited Heat Exchanger and Tank, 5 Year Limited Parts Warranty

- For complete information, consult written warranty or go to statewaterheaters.com.



Model	Description	Gallon Capacity	Input BTU/HR	Thermal Efficiency	Dimensions			Recovery GPH Temperature Rise			Shipping Weight (lbs.)
					Height	Width	Depth	40°F	100°F	140°F	
STX-199-N	Indoor Nat	119	199,000	96%	72	29.4	41	579	232	165	520
STX-199-P	Indoor LP	119	199,000	96%	72	29.4	41	2,192	878	625	520

Electrical characteristics-120V-60Hz A.C., 5.0 A.
Models certified from sea level to 10,100 ft. elevation.

COMMERCIAL GAS SANDBLASTER® SELF CLEANING



Designed with Flexibility in Mind

- Hot and cold water connections can be made through front, top or rear of unit
- Low installation clearances

The ELIMINATOR Self-Cleaning System

- Designed to significantly reduce or eliminate sediment build-up inside the tank when using the front connection
- Helps maintain thermal efficiency and reduce water-heating costs.
- Maximizes tank life

Factory-Installed Draft Diverter and Flue Damper

- Low-profile draft diverter helps for installation in tight spaces
- Automatic motorized flue damper helps minimize standby heat loss
- SBD85 Uses Draft Inducer design

PERMAGLAS® ULTRA COAT Glasslining

- Exclusive process provides superior protection against corrosion

CoreGard Anode Rods with Stainless Steel Core Provide Additional Corrosion Protection

Intermittent Electronic Ignition

- Eliminates standing pilot, saves energy
- Includes power ON/OFF switch

CSA Certified and ASME rated T&P Relief Valve, Factory-Installed

Maximum Hydrostatic Working Pressure: 160 psi

Fully Automatic Control System

- Electric temperature control for precise temperature regulation adjustable 120°F–180°F

Handhole Clean Out

3-Year Limited Tank and 1-Year Limited Parts Warranty

- For complete information, consult written warranty or go to statewaterheaters.com.

Model Number	Gallon Capacity	BTU/H Input	Recovery GPH Temperature Rise			Dimensions in Inches		Approx. Shipping Weight (lbs)	
			40°F	100°F	140°F	Height	Diameter	Standard	ASME
SBD71 120NE	71	120,000	291	116	83	69.75	27.5	400	N/A
SBD81 154NE	81	180,000	434	174	124	67.5	27.5	470	N/A
SBD81 180NE	81	180,000	434	174	124	67.5	27.5	470	N/A
SBD100 199NET	100	199,000	482	193	132	75	27.5	603	N/A
SBD81 199NE	81	199,000	461	184	132	67.5	27.5	470	N/A
SBD100 199NES(A)	100	199,000	482	193	132	72	30.25	630	725
SBD100 250NE(A)	100	250,000	606	242	173	72	30.25	630	725
SBD65 251NE(A)	65	251,000	608	243	174	75	27.75	750	862
SBD100 275NE(A)	100	275,000	667	267	190	72	30.25	630	725
SBD65 305NE(A)	65	305,000	739	296	211	75	27.75	750	862
SBD85 365NE(A)	85	365,000	885	354	253	79.5	27.75	725	833
SBD100 390NE(A)	100	390,000	970	388	277	75.5	30.25	760	874
SBD85 500NE(A)	85	500,000	1212	485	346	81.5	27.75	812	857

Specify when ordering propane (LP) gas.

*Model SBD 120 is shipped with 6" x 5" flue outlet adapter. Models SBD 250, 251 and 275 are shipped with a 8" x 6" flue outlet adapter.

Standard models certified from sea level to 2,000 ft. elevation. Order SMR S54 for elevations up to 8,000 ft.

SBD-500 model features induced draft design and no damper.

*A" in the model number indicates optional ASME construction. e.g. SBD85 500 NEA

COMMERCIAL GAS SANDBLASTER® SBL ULTRA-LOW NOx



Complies with California SCAQMD Rule 1146.2 and other Air Quality Management Districts with Similar Requirements of 20 PPM and 14 NG/J Low NOx Requirements.

Rated Category 1 Appliance

Top, Front, and Back Plumbing Connections

Uses Standard Double Wall Type B Vent

No Draft Hood or Barometric Damper

CSA Certified and ASME rated T&P Relief Valve, Factory-Installed Handhole Cleanout

The ELIMINATOR Self-Cleaning Feature

CoreGard anode rods with stainless steel core provide additional corrosion protection

3-Year Limited Tank and 1-Year Limited Parts Warranty

- For complete information, consult written warranty or go to statewaterheaters.com.



Model Number	Gallon Capacity	BTU/H Input	Recovery GPH Temperature Rise			Dimensions in Inches		Approx. Shipping Weight (lbs)	
			40°F	100°F	140°F	Height	Diameter	Standard	ASME
SBL81 120NE	81	120,000	288	115	82	63-3/4	27-3/4	650	N/A
SBL81 154NE	81	154,000	370	148	106	63-3/4	27-3/4	650	N/A
SBL81 180NE	81	180,000	432	173	123	63-3/4	27-3/4	650	N/A
SBL81 199NE	81	199,000	478	191	137	63-3/4	27-3/4	650	N/A
SBL100 199NE	100	199,000	478	191	137	71-3/4	27-3/4	750	800
SBL100 250NE(A)	100	250,000	600	240	171	71-3/4	27-3/4	750	800
SBL100 275NE(A)	100	275,000	660	264	189	71-3/4	27-3/4	750	800
SBL86 310NE(A)	86	310,000	744	298	213	71-3/4	27-3/4	810	860
SBL86 366NE(A)	86	366,000	879	352	251	71-3/4	27-3/4	810	860
SBL86 390NE(A)	86	390,000	936	375	268	71-3/4	27-3/4	810	860

Electrical characteristics—120V-60 Hz A. C., 5.0A.

(A) after model number designates optional ASME construction.

LEG KITS FOR UL SANITATION TO MEET NSF-5 (increases overall height by 4”).

SBL models not available in LP gas.

COMMERCIAL GAS SANDBLASTER® LIGHT DUTY



SBS models provide reliable, efficient service for applications such as office buildings and duplex apartment homes.

CoreGard Anode Rods with Stainless Steel Core Provide Additional Corrosion Protection

PERMAGLAS® Glasslining

- Glass lining and anode rod protect steel tank from corrosion

Fully Automatic Controls

- Includes automatic safety shutoff gas if pilot is extinguished, and high temperature energy cutoff (ECO)

Compact Design

- Smaller diameters and shorter heights for greater installation flexibility

Available in Natural Gas and Propane

Piezo Ignitor

- Natural gas models only

CSA Certified and ASME Rated T&P Relief Valve, Factory-Installed

3-Year Limited Tank and 1-Year Limited Parts Warranty

- For complete information, consult written warranty or go to statewaterheaters.com



Model Number	Gallon Capacity	BTU/H Input	Recovery GPH Temperature Rise			Dimensions in Inches		Approx. Shipping Weight (lbs)
			40°F	100°F	140°F	Height	Diameter	
SBS75 76NE	74	75,100	182	73	52	61-1/8	26-1/2	275
SBS100 76NE	98	75,100	182	73	52	68-5/8	27-3/4	350

NSF leg kit 100111360.

COMMERCIAL GAS SANDBLASTER® LIGHT DUTY ULTRA LOW NOX



Compact Design

- Smaller diameters and shorter heights for greater installation flexibility

Fully Automatic Controls

- Includes automatic safety shutoff gas if pilot is extinguished, and high temperature energy cutoff (ECO)

PERMAGLAS® Glasslining

- Glass lining and anode rod protect steel tank from corrosion

Ultra-Low NOx Emissions

- Complies with SCAQMD Rule 1146.2 and other Air Quality Management Districts with similar requirements of 14 ng/J or 20 ppm

Easy-to-Install

- Completely factory-assembled
- Only gas, water and vent connections need to be made
- All connections are located in front and top of heaters for ease-of-installation and service

CSA Certified and ASME Rated T&P Relief Valve, Factory-Installed 3-Year Limited Tank and 1-Year Limited Parts Warranty

- For complete warranty information, consult written warranty or go to statewaterheaters.com



Model Number	Gallon Capacity	BTU/H Input	Recovery GPH Temperature Rise			Dimensions in Inches		Approx. Shipping Weight (lbs)
			40°F	100°F	140°F	Height	Diameter	
SBL75 76NE	74	75,100	182	73	52	62-1/16	25-1/4	285
SBL100 76NE	98	75,100	184	74	53	70-1/2	27-3/4	350

Natural gas only.

** Recovery based on 80% thermal efficiency.

* Recovery based on 81% thermal efficiency.

COMMERCIAL GAS SANDBLASTER® FORCE POWER DIRECT VENT



Power Direct Vent Design

- Combined horizontal and vertical vent runs up to 125' equivalent feet with 4" diameter venting (PVC, CPVC and polypropylene)
- Two-pipe sealed combustion system uses outside air, eliminating problems caused by insufficient indoor ventilation

Hot-surface Ignitor

- More robust and reliable than standing pilot, and reduces energy consumption

Dynaclean™ Diffuser Dip Tube

User-Friendly

- State-of-the-art electronic gas control provides more precise temperature control
- LED control light displays operation status and diagnostics information

Enhanced-Flow Brass Drain Valve

CSA Certified and ASME Rated T&P Relief Valve

Available in Natural Gas and Propane

3-Year Limited Tank/1-Year Limited Parts Warranty

- For complete information, consult written warranty or go to statewaterheaters.com



Model Number	Approx. Gallon Capacity	BTU/H Input	Recovery GPH Temperature Rise			Dimensions in Inches		Approx. Shipping Weight (lbs)
			40°F	100°F	140°F	Height	Diameter	
SDV75 76NE	75	76,000	185	74	52	70-5/8	26	277

Certified for operation upto 10,100 Ft. without alteration.

COMMERCIAL GAS TITAN[®] POWER BURNER



Small Volume GPG Quality Features:

- UL listed power burner
- CSA Certified and ASME rated T&P relief valve
- Handhole cleanout(s) for easy maintenance
- Fully automatic controls ensure safe, efficient operation
- Barometric draft damper ensures correct airflow in the vent
- Multiple anodes for extra protection against tank corrosion
- Flame inspection port opening for visual inspection of flame characteristics during operation
- Factory-installed burner for easy installation
- GPG85 540 and 650 comply with SCAQMD 1146.2 of 14 ng/J or 20 ppm. The 740 complies with Texas and other areas of 40 ng/J or 30 ppm.
- Exclusive PermaGlas[®] Ultra Coat Glasslined Tank protects tank surfaces and all welds from the corrosive effects of hot water
- Premix Combustion System provides super clean low-NOx flame. Helps eliminate hot spots and uneven heat transfer
- Sealed Combustion Chamber reduces heat loss

Options (Not Available On All Models)

- 3 vent options: atmospheric, sidewall and direct vent

3-Year Limited Tank and 1-Year Limited Parts Warranty

- Factory Start-Up included: required for activating warranty and assuring maximum operating performance (Continental U.S. only)
- For complete information, consult written warranty or go to statewaterheaters.com



Model Number	Gallon Capacity	BTU/H Input	Recovery GPH Temperature Rise		Dimensions in Inches		Approx. Shipping Weight (lbs)
			100°F	140°F	Height	Diameter	
GPG85 540NE(A)	85	540,000	523	374	93	29-1/2	950
GPG85 650NE(A)	85	650,000	630	450	93	29-1/2	950
GPG85 740NE(A)	85	740,000	718	512	93	29-1/2	950

Not available in propane (LP).

Vent Kit included in unit price when ordered with the heater.

"A" in the model number indicates optional ASME construction. e.g.GPG85-740NEA

STATE COMMERCIAL OIL-FIRED WATER HEATERS



COMMERCIAL OIL-FIRED TITAN® POWER OIL BURNER LOW NO_x



Efficient Combustion Chamber

- Precast, high temperature combustion chamber made of alumina silica ceramic fiber
- Engineered for maximum insulation and heat reflection
- Unique design assures more complete combustion by stabilizing flame pattern

Interrupted Ignition

- Reduces electrical consumption

Two Hand-hole Cleanouts

- Allows easy cleaning on standard models GPO-385 and larger and ASME models

Easy-to-Install Burner

- Three-bolt mounting of burner assures easy installations.

3-Year Limited Tank and 1-Year Limited Parts Warranty

- Factory Start-Up included: required for activating warranty and assuring maximum operating performance (Continental U.S. only)
- For complete information, consult written warranty or go to statewaterheaters.com



(Select Models)

Model Number	Gallon Capacity	Btuh Input	Recovery GPH Temperature Rise			Dimensions in Inches		Approx. Shipping Weight (lbs)	
			40°F	100°F	140°F	Height	Diameter	Standard	ASME
GP086 199 OE	86	199,000	477	191	136	74-1/2	27-3/4	553	N/A
GP086 245 OE	86	245,000	587	235	168	74-1/2	27-3/4	554	N/A
GP084 315 OE(A)	84	315,000	754	302	216	74-1/2	27-3/4	554	657
GP075 385 OE(A)	75	385,000	922	369	263	73-3/4	27-3/4	624	742
GP075 455 OE(A)	75	455,000	1090	436	311	73-3/4	27-3/4	700	747
GP069 700 OE(A)	69	700,000	1677	671	479	73-3/4	27-3/4	739	822

*Based on No. 2 fuel oil.

All models have 1/8 HP motor.

Add (A) to the model number for ASME construction, e.g. GPO-700A (not available on 199-245).

STATE
COMMERCIAL TANKLESS
WATER HEATERS



COMMERCIAL TANKLESS COMMERCIAL RACK SYSTEM



WALL MOUNT



FREE STANDING INLINE



FREE STANDING BACK-TO-BACK

The State Commercial Tankless Rack System is designed to give you all of the benefits of tankless water heaters in an easy-to-install package. The racks are available in a variety of configurations with up to 1,194,000 BTU on a single rack system. They feature our 199,000 BTU high efficiency condensing tankless heater for significant energy cost savings. The systems are pre-assembled, and only require three simple connections - cold water, hot water, and gas.

Multiple Design and Installation Configurations

- Wall mount, free standing in-line, and free standing back-to-back designs
- Indoor and outdoor rack designs

Expandable

- Up to 1,194,000 BTU on a single rack system
- Able to link up to 20 heaters together with Multi-Link system

Redundancy

- Multiple combustion systems provide piece of mind
- Easily isolate a unit for maintenance which extends the life of the heaters

Lightweight

- Anodized aluminum frame
- Utilizes the industry's lightest 199,000 BTU high efficiency condensing tankless heater

Easy Field Installation

- Reduce installation costs with three simple connections (cold water, hot water, and gas)
- 1-1/2" Schedule 40 gas manifold pipe
- 2" Copper hot/cold water manifold pipes

Ultra-Low NOx Emissions

- Complies with SCAQMD Rule 1146.2 NOx emission requirements of 14 ng/J or 20 PPM.

1-year limited warranty on rack parts

- For complete information, consult written warranty or go to statewaterheaters.com.

Continued on the following page.

COMMERCIAL TANKLESS COMMERCIAL RACK SYSTEM (CONTINUED)

Model*	Description	Configuration	Gas Consumption Input		Max GPM @ 100 F**	Dimensions			Shipping Weight (lbs.)
			Minimum BTU/HR	Maximum BTU/HR		Length	Width	Height	
SCI-CRS-22WM-N	2 Unit Indoor Wall Mount Natural Gas		15,000	398,000	7.6	46	13.02	57	240
SCI-CRS-23WM-N	2 Unit Indoor Wall Mount Natural Gas		15,000	398,000	7.6	66	13.02	57	250
SCI-CRS-33WM-N	3 Unit Indoor Wall Mount Natural Gas		15,000	597,000	11.4	66	13.02	57	350
SCI-CRS-24IL-N	2 Unit Indoor Inline Natural Gas		15,000	398,000	7.6	46	30.5	53.09	265
SCI-CRS-26IL-N	2 Unit Indoor Inline Natural Gas		15,000	398,000	7.6	66	30.5	53.09	285
SCI-CRS-24B2B-N	2 Unit Indoor Back-To-Back Natural Gas		15,000	398,000	7.6	46	30.5	53.09	265
SCI-CRS-36IL-N	3 Unit Indoor Inline Natural Gas		15,000	597,000	11.4	66	30.5	53.09	387
SCI-CRS-34B2B-N	3 Unit Indoor Back-To-Back Natural Gas		15,000	597,000	11.4	46	30.5	53.09	480
SCI-CRS-36B2B-N	3 Unit Indoor Back-To-Back Natural Gas		15,000	597,000	11.4	66	30.5	53.09	510
SCI-CRS-44B2B-N	4 Unit Indoor Back-To-Back Natural Gas		15,000	796,000	15.2	46	30.5	53.09	580
SCI-CRS-46B2B-N	4 Unit Indoor Back-To-Back Natural Gas		15,000	796,000	15.2	66	30.5	53.09	620
SCI-CRS-56B2B-N	5 Unit Indoor Back-To-Back Natural Gas		15,000	995,000	19	66	30.5	53.09	741
SCI-CRS-66B2B-N	6 Unit Indoor Back-To-Back Natural Gas		15,000	1,194,000	22.8	66	30.5	53.09	800

Racks utilize CT-199 tankless models.

Model Number Format:

- First number (2/3/4/5/6) = number of tankless units mounted
- Second number (2/3/4/6) = rack size (maximum number of units)
- Letters represent the rack configuration: WM = wall mount; IL = inline floor standing; B2B = back-to-back floor standing

Note: Inline models can be flush mounted against a wall by field removing back shipping leg.

For outdoor applications change SCI to SCO in the model number when ordering. Example: SCO-CRS-22WM-N

*For Propane, change N to P in the model number when ordering. (Example: SCI-CRS-23WM-P). **Outdoor installations require vent cap.

** Current numbers based on factory testing; 0.5 GPM required for activation; 0.4 GPM required for continuous fire after initial ignition.

COMMERCIAL TANKLESS TANKLESS HIGH EFFICIENCY CONDENSING



**OUTDOOR
MODEL**

INDOOR MODEL



ANSI Z21.10.3

CSA 4.3

ENERGY STAR® Qualified

Condensing Technology Provides 96% Thermal Efficiency

Ultra-Low NOx Emissions

- Complies with SCAQMD Rule 1146.2 NOx Emission Requirements Of 14 ng/J or 20 PPM

Link Multiple Units into a Combined System

- Common Vent up to 8 indoor units
- Easy-Link up to 4 units
- Multi-Link up to 20 units

Heat Exchanger

- Primary heat exchanger is constructed of a commercial-grade copper that is more resilient to erosion
- Copper is 25x better at heat transfer than stainless steel thus stabilizing outgoing water temperature quicker and reducing pressure drop across the heat exchanger
- Secondary heat exchanger is made of marine-grade 316L stainless steel to protect against corrosion

Maximum Continuous Flow Rates up to 10.0 GPM

Indoor Models

- Include integrated temperature controls and advanced diagnostics to simplify troubleshooting
- Factory-Installed Power Cord Included for Indoor Models

Outdoor Models

- Include a wall mount temperature remote controller and advanced diagnostics to simplify troubleshooting

Safety Features

- Air-Fuel Ratio (AFR) Sensor
- Exhaust & Water Temperature Safety Control
- Overheat Cut-off Fuse

Internal Freeze Protection System

Power Vent or Power Direct Vent Design

6-year limited heat exchanger in commercial applications; 5-year limited warranty on parts

- For complete information, consult written warranty or go to statewaterheaters.com

Model Number*	Type	Gas Consumption Input		Inlet Gas Pressure***		Thermal Efficiency	UEF	Maximum GPM‡	Connections		Dimensions in Inches			Approx Shipping Weight (lbs)
		Minimum** (BTU/H)	Maximum (BTU/H)	Minimum (in. W.C.)	Maximum (in. W.C.)				Water	Gas	Height	Width	Depth	
SCT-1991-N	Indoor	15,000	199,000	4.0	10.5	96%	0.93	10	3/4" NPT	3/4" NPT	23-5/8	17-3/4	11 1/4	63
SCT-1990-N	Outdoor	15,000	199,000	4.0	10.5	96%	0.95	10	3/4" NPT	3/4" NPT	23-5/8	17-3/4	11 1/4	63

*For Propane, change the N to P in the model number when ordering. (Example: SCT-1991-P)

**For Propane, minimum input is 13,000 BTU/H

***For Propane, inlet gas pressure is 8.0-14 in. W.C.

‡Current numbers based on factory testing; 0.5 GPM required for activation; 0.4 GPM required for continuous fire after initial ignition.

15-150 PSI water pressure. 40 PSI or above is recommended for maximum flow.

Indoor models are certified from sea level to 10,100 ft. elevation. Outdoor models are certified from sea level to 6,000 ft. elevation.

COMMERCIAL TANKLESS TANKLESS HEAVY DUTY

Commercial-Grade Copper Heat Exchanger (Non-ASME Models)

ASME Models Available

5" Category III Stainless Steel Venting

Vertical or Horizontal Venting
Installation

Power Vent Design

Electronic Ignition

Low NOx Emissions

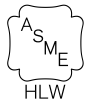
Combined Indoor/Outdoor Models

Easy-Link up to 4 Units

Multi-Link up to 10 Units

6-year limited heat exchanger in commercial applications; 5-year
limited warranty on parts

- For complete information, consult written warranty or go to statewaterheaters.com



Model Number*	Type	Gas Consumption Input		Inlet Gas Pressure***		Thermal Efficiency (NG / LP)	Maximum GPM‡	Connections		Dimensions in Inches			Approx Shipping Weight (lbs)
		Minimum (BTU/H)	Maximum (BTU/H)	Minimum (in. W.C.)	Maximum (in. W.C.)			Water	Gas	Height	Width	Depth	
GTS-910-N	Indoor	15,000	380,000	4.0	10.5	80% / 82%	14.5	1" NPT	1" NPT	25-1/4	24-7/8	12-3/4	113
GTS-910-AN**	Indoor	15,000	380,000	4.0	10.5	80% / 82%	14.5	1" NPT	1" NPT	25-1/4	24-7/8	12-3/4	113

*For Propane, change the N to P in the model number when ordering. (Example: GTS-910-P)

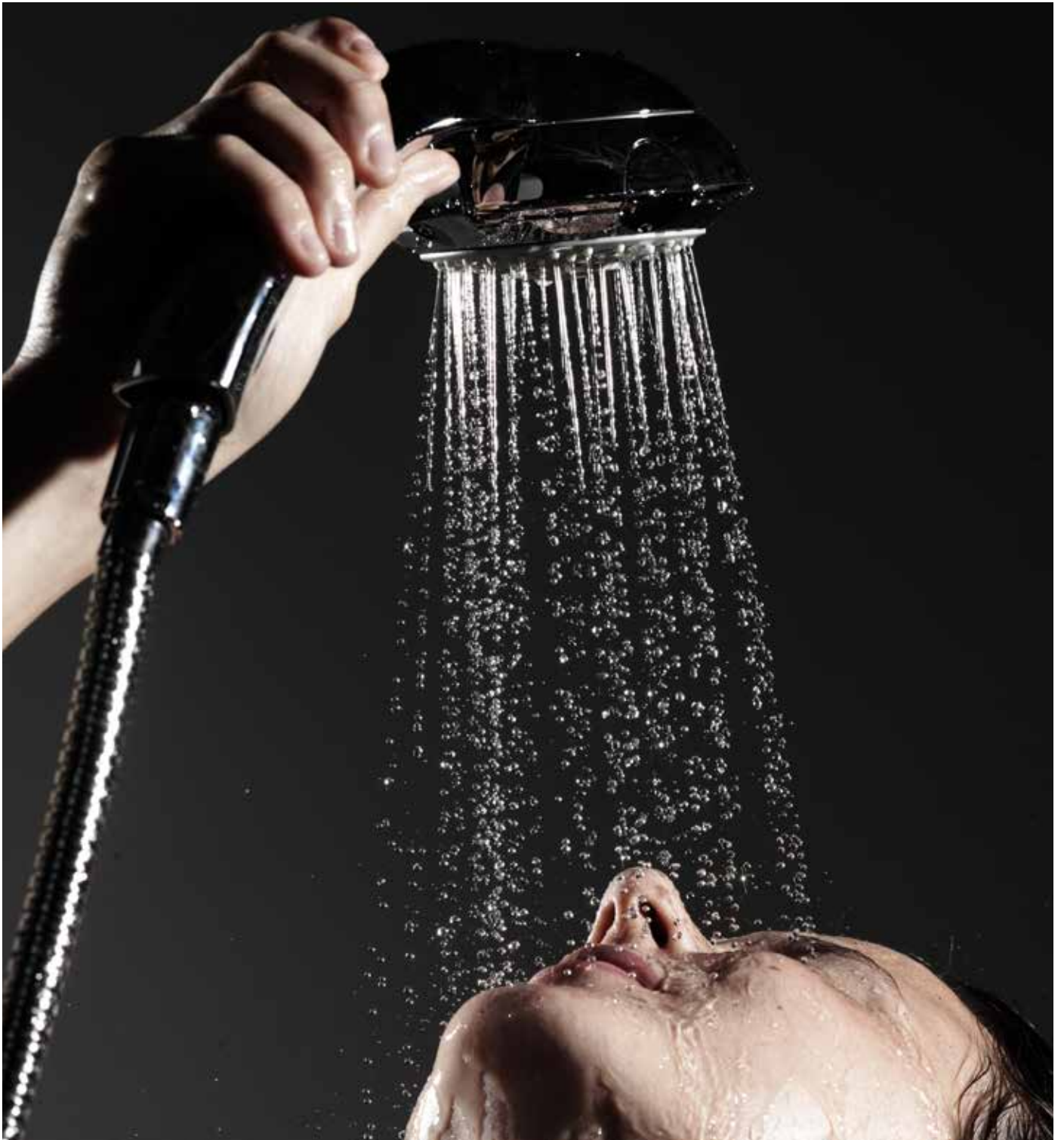
**ASME model

***For Propane, inlet gas pressure is 8.0-14 in. W.C.

‡Current numbers based on factory testing; 0.5 GPM required for activation; 0.4 GPM required for continuous fire after initial ignition.

15-150 PSI water pressure. 40 PSI or above is recommended for maximum flow.

STATE COMMERCIAL ELECTRIC WATER HEATERS



COMMERCIAL ELECTRIC LIGHT-SERVICE



Designed for light duty commercial applications with intermittent hot water loads

Glasslined Tank

- Tank interior is coated with glass specially designed by State for water heater use

Heating Elements

- Two 4.5 KW zinc plated copper sheathed elements are standard

Standard Voltages

- The standard voltage is 240V single phase
- Optional voltage is 208V single phase

Junction Box Controls

- Thermostat is adjustable through a range of 120° to 181°F with a manual reset high temperature cutoff
- The heater is wired for non-simultaneous single phase operation

Coregard Anode Rod

- Our anode rods have a stainless steel core that extends the life of the anode rod allowing superior tank protection for longer than standard anode rods

Enhanced-Flow Brass Drain Valve

- Solid brass, tamper resistant, enhanced-flow, ball type, drain valve

Maximum Working Pressure 150 psi Factory Installed CSA Certified and ASME Rated Temperature and Pressure Relief Valve

Certified to UL 1453 for Commercial Electric Water Heaters
Electric Water Heaters

6-Year Limited Tank and 1-Year Limited Parts Warranty

- For complete information, consult written warranty or go to statewaterheaters.com



Model Number	Gallon Capacity	Standard Wattage 240 VAC	Dimensions in Inches		Approx. Shipping Weight (lbs)
			Height	Diameter	
EDT 6620RT	66	4,500	60.13	22	146
EDT 8020RT	80	4,500	60.5	24	175
EDT 1200RT	119	4,500	61.38	28	268

Not available with top mounted T&P valve option.
Inlet and outlet connections: 3/4"

COMMERCIAL ELECTRIC PATRIOT LIGHT DUTY



Zinc-Plated Copper Sheath Heating Elements Standard

- Medium-watt density design disperses element temperature over larger surface contact area to minimize scale build-up, maximize efficiency and prolong element life
- Element options from 1.5 kW to 6 kW (non-simultaneous or simultaneous operation), recoveries from 6 gph to 49 gph at 100°F rise

Standard Voltages for Easy Installation

- 120V, 277V single-phase, and 208V, 240V and 480V unbalanced 3-phase delta
- Easily converted to single-phase at terminal block (except for 208V with 6000W elements)
- Single-element heater, single-phase only (see chart for dual-element options)

Factory Installed Terminal Block

- Provide electrical service to heater and connect to block (not supplied on 120V and 277V models)

Factory-Wired Controls

- Temperature control (adjustable from 110°F to 170°F on single element; 120°F to 181°F on dual-element models)
- Manual reset high temperature cutoff per element
- Wired for 3-Phase, easily convert-able to single phase

Glasslined Tank

- Provides long-lasting protection against corrosion
- Equipped with anode rod for additional protection against corrosion

Maximum Hydrostatic Working Pressure: 150 PSI

3-Year Limited Tank and 1-Year Limited Parts Warranty

- For complete information, consult written warranty or go to statewaterheaters.com

continued on the following page



COMMERCIAL ELECTRIC
PATRIOT LIGHT DUTY
 (CONTINUED)

Element Wattage (Upper/Lower)	U.S. Gallons/Hr at Temperature Rise Indicated	
	F°	100
Non-Simultaneous		
/1500	GPH	6
/2000	GPH	8
/2500	GPH	10
3000/3000	GPH	12
4000/4000	GPH	16
4500/4500	GPH	18
5000/5000	GPH	20
6000/6000	GPH	24
Simultaneous Operation		
3000/3000	GPH	24
4000/4000	GPH	32
4500/4500	GPH	36
5000/5000	GPH	41
6000/6000	GPH	49

Model Number	Gallon Capacity	Dimensions in Inches		Approx. Shipping Weight (lbs)
		Height	Diameter	
Compact Models				
PCE 6 10MS A	6	15-1/2	14-1/4	35
PCE 10 10MS A	10	18-1/4	18	54
PCE 15 10MS A	15	26	18	58
PCE 20 10MS A	20	22-1/4	21-3/4	73
Lowboy Models				
PCE 30 20LS A	30	30-7/8	21-3/4	100
PCE 40 20LS A	40	32-1/4	24	125
PCE 50 20LS A	50	32-1/4	26-1/2	166
Tall Models				
PCE 30 20RT A	30	34-1/2	20-1/2	98
PCE 40 20RT A	40	45-1/8	20-1/2	113
PCE 52 20RT A	50	54-7/8	20-1/2	131
PCE 66 20RT A	66	30-3/4	21-3/4	176
PCE 80 20RT A	80	59-3/8	24	211
PCE 120 20RT A	119	62-7/16	29-3/8	326

6 gallon model not available above 3.0 kW
 6/10/15/20 gallon model all C2 circuit (2 wire) only
 S= Single Element D= Dual Elements
 Dual element models wired for 3-phase 208/240/480 volt. Field convertible to 1-phase.

COMMERCIAL ELECTRIC SANDBLASTER® SELF CLEANING



Incoloy Sheath Heating Elements Standard

- Industrial-grade Incoloy sheathed heating elements are designed for rugged long-lasting commercial service, and can withstand sheath temperatures up to 1500°F
- Input options from 6 kW to 54 kW, recoveries from 25 gph to 221 gph at 100°F rise

Power Circuit Fusing for System Protection

- Safeguards elements and contactors from short circuits, overloading and line surges
- Meets National Electrical Code requirements that non-ASME tanks must have internal fusing when current draw exceeds 48 amps

208, 240 and 480V Options for Easy Installation

- Single-phase and 3-phase delta
- Field-convertible voltages 3-phase to single-phase (and vice versa) except for 208V/54 kW
- 277V single-phase also available

Factory-Installed Terminal Block

Other Standard CSB Features

- Two anode rods for maximum corrosion protection
- Simplified circuitry, color coded for ease of service
- Bonderized undercoated baked enamel finished cabinets
- Brass Drain Valve
- CSA/ASME temperature and pressure relief valve

CSB Model Controls

- CSB SFE models have surface mount temperature controls adjustable 120° to 181°F.
- Manual reset high-temperature cutoff

CSB IFE Model Features

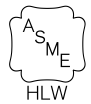
- Advanced Electronic Controls
- Displays operational, diagnostic and fault information in English.
- Heavy-Duty Magnetic Contactors

Precise Temperature Regulation

- Operating Set Point adjustable 90° to 190°F
- CSB IFE models are approved for 180 degree sanitizing
- Banks of heating elements (3 elements per bank) are energized according to adjustable (1° to 20°) differential set points for each bank. Helps reduce short cycling and operating costs by matching kW output to load conditions
- Linear sequencing - first bank on is last bank off
- Helps reduce current surge/spikes and avoid peak demand charges
- Helps reduce operating costs during low load conditions
- Manual reset high-temperature cutoff

3-Year Limited Tank and 1-Year Limited Parts Warranty

- For complete information, consult written warranty or go to statewaterheaters.com



ASME/CRN (optional)

Model Number	Gallon Capacity	Dimensions in Inches		Approx. Shipping Weight
		Height	Diameter	
CSB 52 6 SFE	50	55-3/4	21-3/4	265
CSB 82 36 SFE	80	60-1/4	25-1/2	280
CSB 120 54 SFE	119	62-1/4	29-1/2	390

Model Number	Tank Capacity	Dimensions			Inlet/Outlet (NPT)	Approx. Shipping Weight
		Height	Width	Diameter		
CSB 52 6 IFE	50	55-3/4	21-3/4	27	1-1/4	265
CSB 82 36 IFE	80	60-1/4	25-1/2	31	1-1/4	280
CSB 120 54 IFE	119	62-1/4	29-1/2	35	1-1/4	390

CSB is maximum 36kW
See specification sheets or contact your local rep for optional kW's available

COMMERCIAL ELECTRIC STATESMAN PREMIUM HEAVY DUTY ASME AND NSF CONSTRUCTION



Incoloy Sheath Heating Elements Standard

- Industrial-grade Incoloy sheathed heating elements are designed for rugged long-lasting commercial service, and can withstand sheath temperatures up to 1500°F
- Each heating element has three separate heating loops, which provides more heating surface, lower watt density, maximum recovery efficiency and longer life
- Input options from 3 kW to 90 kW, recoveries from 12 gph to 369 gph at 100°F rise

Standard Voltages for Easy Installation

- Single-phase and 3-phase
- All 208V and 240V at 24 kW and below are supplied as phase-convertible units (single-to 3-phase and vice versa)
- 277V single-phase also available (Contact State for 120V circuit availability)
- International voltages also available (check with factory)

Factory-Installed Terminal Block (Units with More than One Contactor)

Advanced Electronic Controls

- Plain English text and animated icons
- Displays detailed operational and diagnostic information
- Fault or alert messages appear if an operational issue occurs
- Last 9 fault and alert messages saved with time stamp

Progressive Sequencing

- First heating element on is first heating element off
- First heating element energized is rotated with each successive heating cycle on models with multiple heating elements
- Evens out wear between heating elements

Economy Operation Mode

- Control system automatically lowers the operating set point by a programmed value during user-defined time periods
- Helps reduce operating costs during unoccupied or low demand periods

Precise Temperature Regulation

- Operating Set Point adjustable 90° to 190°F
- Approved for 180 degree sanitizing
- Sequencing - Units with multiple element contactors are sequenced on with one second delay between stages. Adjustable modulating mode is optional
- Helps reduce current surge/spikes and avoid peak demand charges
- Manual reset high temperature cutoff

continued on the following page

**COMMERCIAL ELECTRIC
STATESMAN PREMIUM HEAVY DUTY ASME
AND NSF CONSTRUCTION (CONTINUED)**

Heavy-Duty Magnetic Contactors

Power Curcuit Fusing for System Protection (120 AMP CURRENT DRAW AND ABOVE)

Glasslined Tank, with ASME Construction

CSA Certified and ASME Rated T&P Relief Valve Compliance

Brass Drain Valve

3-Year Limited Tank and 1-Year Limited Parts Warranty

- For complete information, consult written warranty or go to statewaterheaters.com

Model Number	Gallon Capacity	Maximum kW Input	Dimensions in Inches		Approx. Shipping Weight (lbs)
			Height	Diameter	
SSE-5	5	3	22	16	82
SSE-10	10	6	28-1/4	18	116
SSE-20	20	18	31-3/4	22	145
SSE-30	30	24	43 1/4	22	218
SSE-40	40	36	54 3/4	22	190
SSE-50	50	90	66-1/2	22	221
SSE-65	65	90	57-1/4	26-1/2	267
SSE-80	80	90	58-1/4	28	285
SSE-100	100	90	70-1/4	28	354
SSE-120	120	90	70-1/4	31-1/8	420

COMMERCIAL ELECTRIC LARGE VOLUME ELECTRIC ASME SEV/SEH MODELS

SEV/SEH are the largest commercial electric units we manufacture. Ideal for use as recovery heaters for all types of large commercial and industrial applications, or for large process potable hot water requirements. They are customizable to meet any special application with the large selection of available options.

Advanced Electronic Control

Proprietary electronic water heater control provides precise + or - 1°F temperature control, ideal for industrial and food service applications where exact temperatures of hot water are needed.

- Plain Text – Animated icons display detailed operational and diagnostic information. Fault or Alert messages appear if an operational issue occurs
- Low Water Cut Off – Factory standard on board low water cut-off uses a remote electronic immersion type probe to prevent energizing of the elements in the event of low water condition and eliminates accidental dry firing
- Progressive Modulating – Sizes the input of available elements to match current load conditions. Rotates and lead lags element loads to provide long life and equal wear.
- Economy Mode Operation – Control system automatically lowers the operating set point by a programmed value during user defined time periods. Seven-day clock may be programmed for night set back and or weekend shutdown to reduce operating cost and save money.

Glasslined Tank

- Tank interior is coated with glass specially developed for use in water heaters. Tanks rated at 125 psi working pressure; 150 psi or 160 psi working pressure is optional. Vermin-proof fiberglass insulation reduces costly heat loss. Constructed to Section IV of ASME code, and UL standards. Tanks have channel skid base. A 4" x 6" handhole is furnished on 500, 600 and 700-gallon models; 12" x 16" manhole is furnished on 800-gallon and larger sizes.

Incoloy Immersion Heaters

- Heavy-duty elements (three per immersion heater) have Incoloy sheathing: provide excellent protection against oxidation and scaling
- The input ranges from 15kW to 900kW

Fusing

- Control and power circuit fusing to meet N.E.C.

Magnetic Contactor(s)

- Heavy duty UL rated for 100,000 cycles

Other Standard Features

- Color-coded circuitry for easier servicing
- Anode rods for maximum corrosion protection
- Standard voltages include 208, 240, 480, 600 volt single or three-phase
- Factory-installed terminal block(s)
- Temperature and pressure relief valve

continued on the following page



ASME

COMMERCIAL ELECTRIC LARGE VOLUME ELECTRIC ASME SEV/SEH MODELS (CONTINUED)

Optional Dual-Energy Source Capability

- Provides emergency backup energy source for winter/summer boiler operation
- Can be specified with optional water to water or steam to water heat exchangers
- Both single and double wall heat exchangers are available
- Complete control packages can be factory-installed for hook up and run capability

BMS COMPATIBLE

- Modbus/BACnet compatible with optional
- Gateway interface
- Call 888 WATER02 for more information

ASME CODE CONSTRUCTION

- All models are constructed to the requirements of ASME and are available in 125, 150 and 160 psi working pressures (125 psi working pressure - standard)
- Consult factory for ASME code tanks with greater or lesser working pressures and special configurations or materials

3-Year Limited Tank and 1-Year Limited Parts Warranty

- For complete information, consult written warranty or go to statewaterheaters.com

COMMERCIAL ELECTRIC LARGE VOLUME ELECTRIC ASME SEV/SEH (CONTINUED)

Vertical Electric Storage Heater				
Model Number	Gallon Capacity	Dimensions in Inches		
		Height	Width	Depth
Vertical Round Electric Storage Heater				
SEV-150A	150	65-1/2"	32"	38-3/4"
SEV-200A	200	78"	32"	38-3/4"
SEV-250A	250	92"	34"	40-3/4"
SEV-300A	300	80"	40"	46-3/4"
SEV-400A	400	80"	46"	52-3/4"
SEV-500A	500	92"	46"	52-3/4"
SEV-600A	600	92"	52"	60-3/4"
SEV-800A	750	104"	52"	60-3/4"
SEV-1000A	950	128"	52"	60-3/4"
Vertical Square Electric Storage Heater				
SEV-1250A	1,250	132-1/2"	64-1/2"	64-1/2"
SEV-1500A	1,500	128-1/2"	70-1/2"	70-1/2"
SEV-2000A	2,000	124-1/2"	78-1/2"	78-1/2"
SEV-2500A	2,500	146-1/2"	82-1/2"	82-1/2"

Horizontal Electric Storage Heater				
Model Number	Gallon Capacity	Dimensions in Inches		
		Height	Width	Depth
Horizontal Square Electric Storage Heater				
SEH-150A	150	37"	68-1/2"	34-1/4"
SEH-200A	200	37"	78"	34-1/4"
SEH-250A	250	39"	90-1/4"	36-1/4"
SEH-300A	300	45"	78-1/4"	42-1/4"
SEH-400A	400	52"	78-1/4"	48-1/4"
SEH-500A	500	52"	90-3/4"	48-1/4"
SEH-600A	600	58"	90-3/4"	54-1/4"
SEH-800A	750	58"	102-1/4"	54-1/4"
SEH-1000A	950	58"	126-1/4"	54-1/4"
SEH-1250A	1,250	64"	130-1/4"	60-1/4"
SEH-1500A	1,500	70"	126-1/4"	66-1/4"
SEH-2000A	2,000	82"	123-1/4"	78-1/4"
SEH-2500A	2,500	82"	144-1/4"	78-1/4"

Minimum installation clearances- refer to Installation Manual.
For units higher than 72kW, additional height will be added to the dimensions. Please consult the factory for those orders.

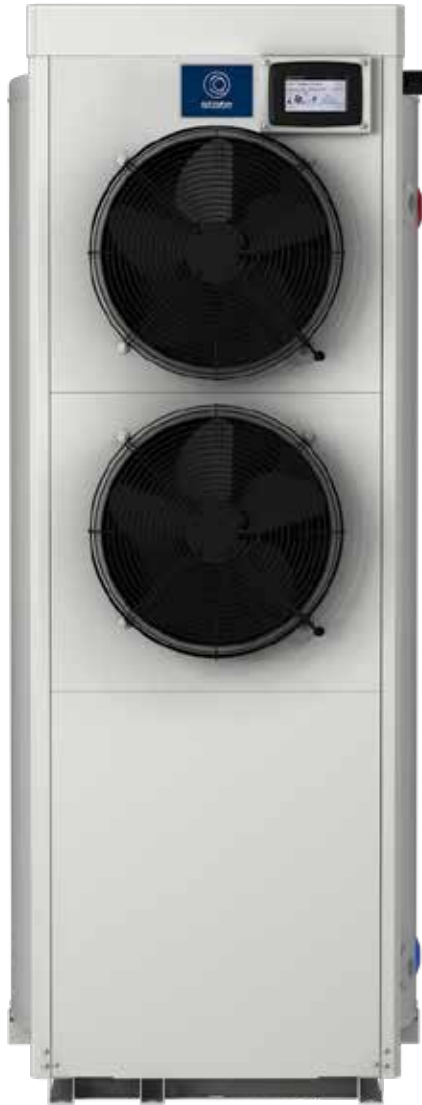
kW Input	GPH 100°F Rise	Btu/hr Equivalent	No of Elements/ kW Per
15	62	51,180	1-15kW
18	74	61,416	1-18kW
30	123	102,360	1-15kW
36	148	122,832	1-18kW
45	185	153,540	1-15kW
54	221	184,248	1-18kW
60	246	204,720	2-15kW
72	295	245,664	2-18kW
90	369	307,080	2-18kW
108	443	368,496	2-18kW
120	492	409,440	3-15kW
135	554	460,620	3-15kW
144	590	491,328	3-18kW
162	664	552,744	3-18kW
180	738	614,160	4-18kW
216	886	736,992	4-18kW
234	959	798,408	5-18kW
252	1,033	859,824	5-18kW
270	1,107	921,240	5-18kW
288	1,181	982,656	6-18kW
306	1,255	1,044,072	6-18kW
324	1,328	1,105,488	6-18kW
342	1,402	1,166,904	7-18kW
360	1,476	1,228,320	7-18kW
378	1,550	1,289,736	7-18kW
396	1,624	1,351,152	8-18kW
414	1,697	1,412,568	8-18kW
432	1,771	1,473,984	8-18kW

*Complete model number includes the desired kW at the end, e.g. SEV-300-150.
Minimum installation clearances required.

STATE COMMERCIAL STORAGE TANKS



COMMERCIAL HEAT PUMP CHP FULLY INTEGRATED HEAT PUMP



ENERGY SAVING & ENVIRONMENTALLY FRIENDLY

- Heat pump transfers heat from surrounding area into the tank
- Industry leading 4.2 COP
- Multiple operating modes maximize efficiency while meeting specific hot water needs
- Integrated, large capacity tank enables heat pump to operate more frequently than electric elements, saving money
- Meets standby loss requirements of U.S. Department of Energy and current edition of ASHRAE 118.1

COMMERCIAL PERFORMANCE

- First hour delivery of 150 GPH
- Electric heating element capacity of 12 kW (240Vac)
- Max. water temperature of 150° F. in Efficiency/Hybrid modes and 180° F. in Electric mode
- Ambient room temperature operating range of 20° to 110° F.
- Dual evaporator fans maximize performance and provide room cooling
- Low operating sound measured at 59 dB (A)

EASE OF OPERATION

- Integrated design and pre-charged refrigeration system facilitates fast, easy installation
- Large touch screen LCD display allows for mode selection, provides run information and includes troubleshooting alerts and detail
- Three operating modes: Efficiency, Hybrid or Electric

DEPENDABLE & LONG LASTING DESIGN

- State-developed glass coated tank
- Tank rated at 160 PSI working pressure
- Commercial grade anode protects the tank and extends service life
- Electric elements have incoloy sheathing and provide excellent protection from oxidation and scaling

3-YEAR LIMITED TANK AND 1-YEAR LIMITED PARTS/COMPRESSOR WARRANTY

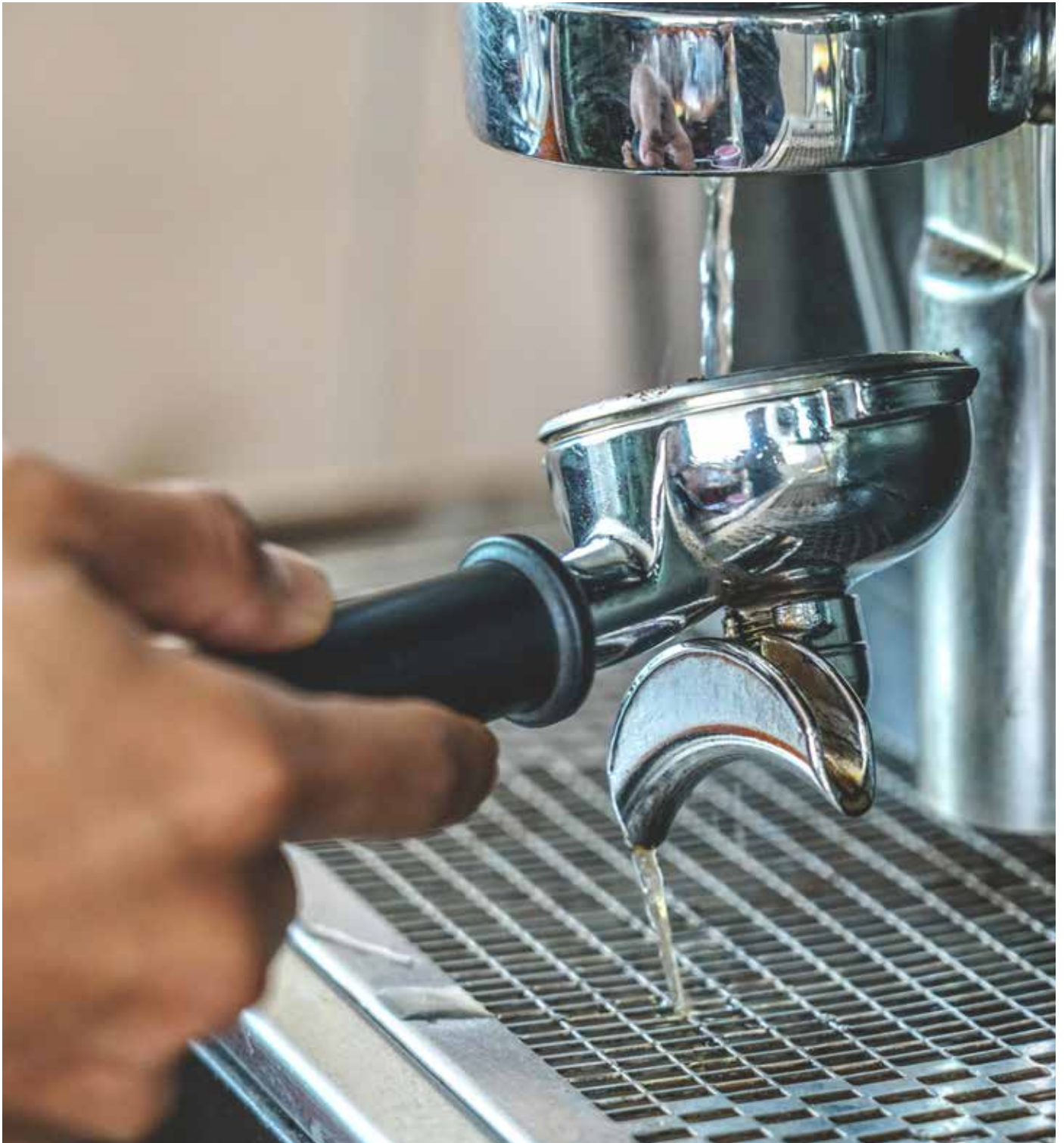
- For complete warranty information, consult written warranty or go to statewaterheaters.com



Model Number	Gallon Capacity	COP	Number of Elements	Total Element Wattage (both elements @ 240V)	First Hour Delivery in Hybrid Mode (GPH)	Recovery in GPH at 100° Temperature Rise	Approx. Shipping Weight (lbs)
CSHP 120	119	4.2	2	12,000	150	Efficiency = 41 Hybrid = 90 Electric = 50	620

Model Number	Dimensions							
	A	B	C	D	E	F	G	H
CSHP 120	69-11/16	28-1/32	39-11/64	23-5/8	58-7/64	57-51/64	6-1/32	30-29/32

STATE COMMERCIAL STORAGE TANKS



COMMERCIAL STORAGE TANKS FACTORY JACKETED & INSULATED STORAGE TANKS

Glasslined per ASME, HLW Procedures

Horizontal or Vertical Available

ASME Construction

Anodic Protection

Meets R12.5 Minimum Thermal Insulation Requirements of the U.S. Department of Energy and Current Edition of ASHRAE/IES 90.1

5-Year Limited Tank Warranty

- For complete information, consult written warranty or go to statewaterheaters.com



Vertical Round Jacketed ASME			
Model Number	Height	Diameter	Gallons
PVG-500-00VSA125	91	46	500
PVG-500-00VTA125	77	52	500
PVG-600-00VTA125	88	52	600
PVG-700-00VTA125	97	52	700
PVG-750-00VTA125	100	52	750
PVG-1000-00VTA125	124	52	1000
Vertical Square Jacketed ASME			
PVG-1200-00VTA125	133	60	1,250
PVG-1500-00VTA125	129	66	1,500
PVG-1750-00VTA125	153	66	1,750
PVG-2000-00VTA125	126	78	2,000
PVG-2500-00VTA125	146.5	78	2,500

**COMMERCIAL STORAGE TANKS
FACTORY JACKETED & INSULATED STORAGE
TANKS (CONTINUED)**

Horizontal Round Jacketed ASME Tanks				
Model Number	Height	Length	Diameter	Gallons
PVG-0250-00HTA125	41	87	34	250
PVG-0300-00HTA125	47	76	40	300
PVG-0400-00HTA125	53	76	46	400
PVG-0500-00HSA125	53	87	46	500
PVG-0500-00HTA125	59	77	52	500
PVG-0600-00HTA125	59	88	52	600
PVG-0700-00HTA125	59	97	52	700
PVG-0750-00HTA125	59	100	52	750
PVG-1000-00HTA125	59	124	52	1000

Horizontal Square Jacketed ASME Tanks				
Model Number	Height	Length	Depth	Gallons
PVG 1250 00HTA125	68.5	134	60.25	1,250
PVG 1500 00HTA125	74.5	127	66.25	1,500
PVG 2000 00HTA	86.5	127	78.25	2,000
PVG 2500 00HTA	86.5	144	78.25	2,500

COMMERCIAL STORAGE TANKS STANDARD JACKETED AND INSULATED STORAGE TANKS



Glasslined per ASME, HLW Procedures

Foam Insulation

Heavy Gauge Steel Jacket With Baked Enamel Finish

Fits through a 33" door

ASME Construction on select models

Anodic Protection

All Tanks Have 2" Threaded Openings

Meets R12.5 Minimum Thermal Insulation Requirements of the U.S. Department of Energy and Current Edition of ASHRAE/IES 90.1

5-Year Limited Tank Warranty

- For complete warranty information, consult written warranty or go to statewaterheaters.com.



Model Number	Gallon Capacity	Dimensions in Inches		Approx. Shipping Weight (lbs)
		Overall Length	Diameter	
PVG 0080 00VT	80	63	25-1/4	236
PVG 0120 00VT	119	62	29-3/8	320
PVG 0080 00VTA125	80	54-7/8	26-1/2	369
PVG 0120 00VTA125	119	61-3/4	28	411
PVG 0200 00VSA125	175	77	32	560

A denotes ASME construction. Example PVG 200 00VSA125

COMMERCIAL STORAGE TANKS UNINSULATED STANDARD BARE STORAGE TANKS



Glasslined per ASME, HLW Procedures

Horizontal or Vertical

ASME Construction

Anodic Protection

5-Year Limited Tank Warranty

- For complete warranty information, consult written warranty or go to statewaterheaters.com.

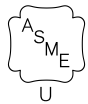


Model Number	Gallons	Overall Dimensions Inches	Diameter	Height	Weight (LBS) - Glass 160 psi
UVG-0080-00VT	80	20 x 62-1/8	20	61-1/2	170
UVG-0120-00VT	119	24-1/4 x 65	24-1/4	64-3/8	287
UVG-0200-00VT	200	30 x 72	30	70-3/4	460
UVG-0350-00VT	350	36 x 88	36	86	670
UVG-0140-00VTA125	140	24 x 76-1/4	24	75	400
UVG-0200-00VTA125	200	30 x 72	30	70-3/4	460
UVG-0250-00VTA125	250	30 x 84	30	84	505
UVG-0350-00VTA125	350	36 x 88	36	86	670
UVG-0400-00VTA125	400	36 x 97	36	96	775

Model Number	Gallons	Diameter	Height	Weight (LBS) - Glass 125 psi
UVG-0500-00VSA125	500	42	87	763
UVG-0500-00VTA125	500	48	77	1062
UVG-0600-00VTA125	600	48	88	1193
UVG-0700-00VTA125	700	48	97	1301
UVG-0750-00VTA125	750	48	100	1337
UVG-1000-00VTA125	1000	48	124	1623
UVG-1250-00VTA125	1250	54	128	2100
UVG-1500-00VTA125	1500	60	124	2709
UVG-1750-00VTA125	1750	60	148	3156
UVG-2000-00VTA125	2000	72	121	3397

Model Number	Gallons	Diameter	Length	Weight (LBS) - Glass 125 psi
UVG-0500-00HSA125	500	42	83	763
UVG-0500-00HTA125	500	48	73	1062
UVG-0600-00HTA125	600	48	84	1193
UVG-0700-00HTA125	700	48	93	1301
UVG-0750-00HTA125	750	48	96	1337
UVG-1000-00HTA125	1000	48	120	1623

COMMERCIAL STORAGE TANKS HEAVY-DUTY LARGE VOLUME STORAGE TANKS



OPTIONAL

Glasslined per ASME, HLW Procedures

Horizontal or Vertical Options Available

Insulated Jackets or Bare Steel Tanks

Cement or Epoxy Linings Available

ASME Construction

Anodic Protection

5-Year Limited Tank Warranty

- For complete warranty information, consult written warranty or go to statewaterheaters.com.

Continued on the following page.

Model Number	Gallons	Dimensions			Shipping Weight (lbs.)		
		Diameter	Vertical Height	Horizontal Length	125 psi	150 psi	Cement Lined
UGV24-0120-*A125	118	24"	64"	60"	368	368	-
UGV24-0140-*A125	141	24"	76"	72"	428	428	-
UGV24-0200-*A125	188	24"	100"	96"	556	556	-
UGV24-0250-*A125	235	24"	124"	120"	684	684	-
UGV28-0175-*A125	175	28"	65"	-	353	353	-
UGV28-0200-*A125	200	28"	76"	-	488	488	-
UGV30-0150-*A125	147	30"	52"	48"	400	400	695
UGV30-0185-*A125	184	30"	64"	60"	468	468	812
UGV30-0220-*A125	220	30"	76"	72"	548	548	958
UGV30-0250-*A125	257	30"	87"	83"	628	628	1,103
UGV30-0300-*A125	294	30"	100"	96"	701	701	1,242
UGV30-0375-*A125	367	30"	124"	120"	868	868	1,540
UGV36-0275-*A125	265	36"	64"	60"	577	577	995
UGV36-0325-*A125	318	36"	76"	72"	673	673	1,173
UGV36-0400-*A125	370	36"	87"	83"	770	770	1,343
UGV36-0425-*A125	423	36"	100"	96"	866	866	1,513
UGV36-0500-*A125	528	36"	124"	120"	1,058	1,058	1,861

All tanks built in Lebanon, TN

H horizontal V vertical

* for H or V

COMMERCIAL STORAGE TANKS HEAVY-DUTY LARGE VOLUME STORAGE TANKS (CONTINUED)

Model Number	Gallons	Dimensions			Shipping Weight (lbs.)		
		Diameter	Vertical Height	Horizontal Length	125 psi	150 psi	Cement Lined
UGV42-0450-*A125	432	42"	76"	72"	795	909	1,385
UGV42-0500-*A125	504	42"	88"	84"	908	1,050	1,587
UGV42-0600-*A125	576	42"	100"	96"	1,020	1,190	1,790
UGV42-0750-*A125	720	42"	124"	120"	1,245	1,470	2,195
UGV42-0900-*A125	864	42"	148"	144"	1,470	1,751	2,601
UGV42-1000-*A125	1,008	42"	172"	168"	1,695	2,031	3,006
UGV48-0700-*A125	658	48"	88"	84"	1,346	1,346	2,124
UGV48-0750-*A125	752	48"	100"	96"	1,507	1,507	2,392
UGV48-0950-*A125	940	48"	124"	120"	1,828	1,828	2,918
UGV48-1150-*A125	1,128	48"	148"	144"	2,150	2,150	3,444
UGV48-1300-*A125	1,315	48"	172"	168"	2,471	2,471	3,970
UGV54-1000-*A125	951	54"	100"	96"	1,721	1,972	2,729
UGV54-1200-*A125	1,189	54"	124"	120"	2,083	2,423	3,320
UGV54-1450-*A125	1,427	54"	148"	144"	2,451	2,881	3,919
UGV54-1700-*A125	1,665	54"	172"	168"	2,807	3,326	4,511
UGV54-1900-*A125	1,903	54"	196"	192"	3,168	3,777	5,102
UGV54-2150-*A125	2,141	54"	220"	216"	3,530	4,228	5,701
UGV60-1500-*A125	2,056	60"	172"	168"	3,749	4,425	5,658
UGV60-1750-*A125	2,350	60"	196"	192"	4,231	5,026	6,394
UGV60-2000-*A125	2,056	60"	172"	168"	3,749	4,425	5,658
UGV60-2400-*A125	2,350	60"	196"	192"	4,231	5,026	6,394
UGV60-2650-*A125	2,644	60"	220"	216"	4,713	5,628	7,130
UGV72-2100-*A125	2,115	72"	124"	120"	3,416	3,904	5,104
UGV72-2500-*A125	2,538	72"	148"	144"	3,995	4,627	5,995
UGV72-3000-*A125	2,961	72"	172"	168"	4,575	5,350	6,885
UGV72-3400-*A125	3,384	72"	196"	192"	5,154	6,073	7,767
UGV72-4000-*A125	3,807	72"	220"	216"	5,733	6,795	8,658

H horizontal V vertical
 * For H or V
 J for Jacketed and Insulated
 C for Cement and E for Epoxy

