

*Halsey Taylor*®



**2016 FULL LINE CATALOG**

## TABLE OF CONTENTS

Applications .....	3
The Halsey Taylor® Story .....	4
Certifications.....	5
Ordering and Contact Information .....	5
Filtration .....	6
Green .....	8
Mechanical (HAC).....	14
Electric (HTVZ) .....	17
Retrofit.....	19
Vandal-Resistant.....	22
Architectural OVL-II™ .....	27
Architectural Contour™ .....	30
In-wall and Surface Mount.....	33
Outdoor.....	35
Specialty.....	40
Legacy .....	42
Remote Chillers .....	46
Accessories.....	48





## Applications

### **Schools and Universities:**

Select from units that are ADA compliant and support sustainability.

### **Hospitality Environments:**

Ideal for both guest and staff use.

### **Indoor Fitness Centers:**

Rapid-fill, hands-free units minimize the spread of bacteria.

### **Office Buildings:**

Attractive, architectural designs perfect for all building styles.

### **Airports:**

On-the-go convenience allows travelers to quickly fill reusable bottles.

### **Parks and Recreation Areas:**

Fountains and bottle fillers with pet-friendly options.

### **Pool Environments:**

Designed with corrosion-resistant materials to look great over time.

### **Healthcare Facilities:**

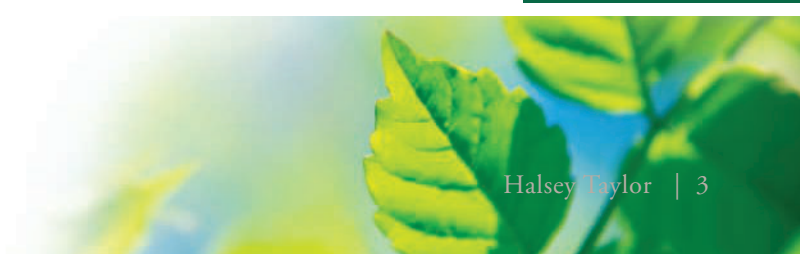
Touchless units help minimize the spread of bacteria.

### **Government Buildings:**

Durable units offer ADA options while supporting sustainability.

### **Public Facilities:**

Sturdy, vandal-resistant units look great year after year.



# The Halsey Taylor Story

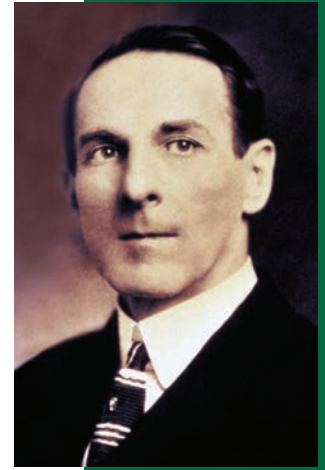
Satisfying Thirsts Since 1912

In 1896, Halsey W. Taylor lost his father to typhoid fever caused by contaminated water. Years later, as a plant superintendent for the Packard Motor Car Company, Taylor noticed dysentery spreading quickly through the workers, and again suspected drinking water.

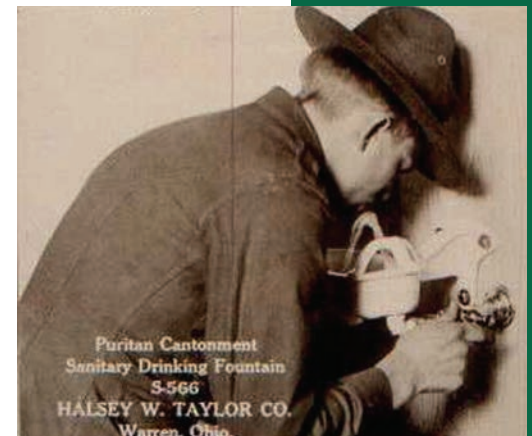
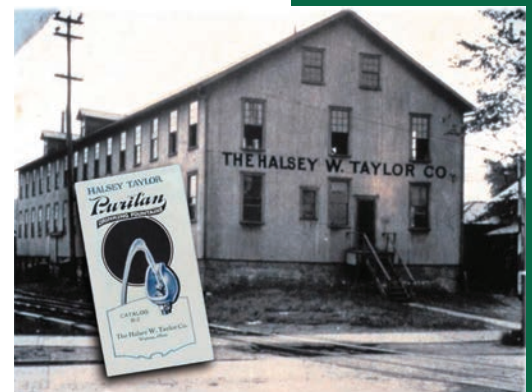
These personal experiences inspired him to dedicate his life to providing a safe drink of water in public places. In 1912, he developed the Puritan Sanitary Fountain and began producing it at the original manufacturing site in Warren, Ohio.

The era soon brought the dawn of World War I, and sanitary drinking water in overcrowded army camps was a major problem. Concerned, Taylor had an idea for a bubbler that would provide a safer drink, resulting in the development of the historic Halsey Taylor Double Bubbler™ which remains one of the industry's most important innovations ever. It projects the water stream farther away from the mouthpiece to lessen the spread of germs.

Today, you can find a Halsey Taylor water cooler or drinking fountain for just about any application. Our vast ADA compliant offerings include contemporary styles and classic shapes, two-station units and outdoor fountains, plus models with a hands-free electronic sensor.



Halsey W. Taylor



Our exclusive Halsey Taylor Double Bubbler provides a satisfying drink of water.



# Halsey Taylor - Certified Safe



• Halsey Taylor water coolers, drinking fountains, bottle filling stations and remote chillers are certified NSF/ANSI 61 and 372. Halsey Taylor filters are certified to NSF/ANSI 42 and 53.



• Halsey Taylor drinking water products are manufactured with lead-free materials and comply with federal and state lead legislation requirements.



• Most Halsey Taylor electrically-operated water coolers and chillers are certified to UL 399 and CAN/CSA 22.2 No. 120 to comply with U.S. and Canadian requirements.



• Halsey Taylor electrically-operated bottle filling stations are certified to UL 399 and CAN/CSA 22.2 No. 120 to comply with U.S. and Canadian requirements.



• Halsey Taylor is manufactured at our Savanna, Illinois, plant which is ISO 9001 registered.



• Many Halsey Taylor products are ADA compliant when properly installed.



• Many Halsey Taylor products are GreenSpec Listed.



Our exclusive Halsey Taylor Double Bubbler provides a fuller, more satisfying drink of water.



## RECYCLED CONTENT

At Halsey Taylor, we believe in doing our part to help sustain the earth's natural resources. Our products are manufactured with recycled content whenever possible. The amount of recycled content varies from product to product.



## BUILT IN THE USA

Our fountains, coolers, chillers and bottle filling stations are proudly built in the Midwest.

---

## Contact Us:

For the name of your nearest Halsey Taylor Sales Representative or wholesaler, visit the Where to Buy section on [www.halseytaylor.com](http://www.halseytaylor.com) or call our Customer Care at the number below.

### TECHNICAL SERVICES:

Our trained technicians are available during normal business hours for any troubleshooting, maintenance or setup help you may need. When calling, please have the model and serial number information from the data label available.

### PRODUCT SPECIFICATION SHEETS:

Visit [www.halseytaylor.com](http://www.halseytaylor.com) for specification sheets on our bottle filling stations, coolers and fountains. Halsey Taylor Customer Care: 800.476.4106

Visit us at [www.halseytaylor.com](http://www.halseytaylor.com) to see our complete line of products.

# FILTRATION



*Reduce harmful contaminants and discoloration from incoming water.*



55897C

## WaterSentry® VII Lead Reduction Filter

- 1,500-gallon replacement filter.
  - Reduces lead, chlorine, taste and odor, Class I particulate.
  - Certified to NSF/ANSI 42 and 53.
- 



55898C

## WaterSentry Plus Filter

- 3,000-gallon replacement filter.
  - Reduces lead, chlorine, taste and odor, Class I particulate.
  - Certified to NSF/ANSI 42 and 53.
  - Available in multi-packs.
- 



WSF6000R-2PK

## WaterSentry Fresh Filter - 2-Pack

Ideal for new construction. Check with your local municipality for water filtration guidelines.

- 6,000-gallon replacement filter.
- Reduces chlorine, taste and odor, Class I particulate.
- Certified to NSF/ANSI 42.

GREEN



*Providing fresh, clean water with sustainability in mind.*





HTHB-HVRGRN8-WF

## HVR Green Cooler with HydroBoost® Bottle Filler

Includes increased efficiency refrigeration system with energy efficiency greater than the average market performance.

- Bottle filler features sanitary, no-touch sensor activation with automatic 20-second shut-off timer.
- Quick fill rate is 1.1 GPM.
- Our Green Counter™ counts the quantity of 20 oz. plastic bottles of water served; without the plastic bottles.
- LED filter monitor to indicate when the filter needs replacing (filtered models only).
- Vandal-resistant SmartFlow™ bubbler reduces the water usage by nearly 40% over average market performance.
- Rated for indoor use.

### AVAILABLE OPTIONS:

- Filtered/non-filtered.
- Single/bi-level.

### ACCESSORIES:

- WaterSentry filters (see page 7).
- Cane apron (see page 50).



HTHB-HVRGRN8BL-WF



HVRGRN8

## Wall Mount HVR Green Cooler

Includes increased efficiency refrigeration system with energy efficiency greater than the average market performance.

- Uses a green refrigeration system that is more efficient by using less water.
- Single-action mechanical push button is self-closing.
- Vandal-resistant pinned Torx screws.
- Vandal-resistant SmartFlow bubbler reduces the water usage by nearly 40% over average market performance.
- Filtered models rated for indoor use; non-filtered rated for indoor and outdoor use.

### AVAILABLE OPTIONS:

- Filtered/non-filtered.
- Single/bi-level.
- Glass filler.

### ACCESSORIES:

- WaterSentry filters (see page 7).
- Cane apron (see page 50).



HVRGRN8BL



HTHB-HACG8SS-WF

## HAC Green Cooler with HydroBoost Bottle Filler

Includes increased efficiency refrigeration system with energy efficiency greater than the average market performance.

- Bottle filler features sanitary, no-touch sensor activation with automatic 20-second shut-off timer.
- Quick fill rate is 1.1 GPM.
- Our Green Counter counts the quantity of 20 oz. plastic bottles of water served; without the plastic bottles.
- LED filter monitor to indicate when the filter needs replacing (filtered models only).
- Exclusive Halsey Taylor Double Bubbler.
- Rated for indoor use.

### AVAILABLE OPTIONS:

- Filtered/non-filtered.
- Single/bi-level.
- Platinum vinyl/stainless steel.

### ACCESSORIES:

- WaterSentry filters (see page 7).
- In-wall carrier (see page 49).
- Cane apron (see page 50).



HTHB-HACG8BLSS-WF



## Wall Mount HAC Green Cooler

Includes increased efficiency refrigeration system with energy efficiency greater than the average market performance.

- Easy-to-operate front and side push-bar activation.
- Exclusive Halsey Taylor Double Bubbler.
- Rated for indoor use.

### AVAILABLE OPTIONS:

- Filtered/non-filtered.
- Single/bi-level.
- Platinum vinyl/stainless steel.

### ACCESSORIES:

- WaterSentry filters (see page 7).
- In-wall carrier (see page 49).
- Cane apron (see page 50).





## OVL-II Green Architectural Refrigerated Fountains

Includes increased efficiency refrigeration system with energy efficiency greater than the average market performance.

- Vandal-resistant SmartFlow bubbler reduces the water usage by nearly 40% over average market performance.
- Sophisticated oval styling.
- Removable louvered front panel for easy servicing.
- Rated for indoor use.

### AVAILABLE OPTIONS:

- Filtered/non-filtered.
- Single/bi-level/bi-level reverse.

### ACCESSORIES:

- WaterSentry filters (see page 7).
- Cane apron (see page 50).



# MECHANICAL



*Ensure that water is always available, even during power disruptions.*



HTHB-HAC8PV-WF

## Bottle Filling Station with ADA Cooler

The HydroBoost works alongside our mechanical cooler ensuring water is always available even during power disruptions.

- Bottle filler features sanitary, no-touch sensor activation with automatic 20-second shut-off timer.
- Quick fill rate is 1.1 - 1.5 GPM.
- Our Green Counter counts the quantity of 20 oz. plastic bottles of water served; without the plastic bottles.
- LED filter monitor to indicate when the filter needs replacing (filtered models only).
- Exclusive Halsey Taylor Double Bubbler.
- Rated for indoor use.

### AVAILABLE OPTIONS:

- Filtered/non-filtered.
- Single/bi-level/bi-level reverse.
- Refrigerated/non-refrigerated.
- Platinum vinyl/stainless steel.

### ACCESSORIES:

- WaterSentry filters (see page 7).
- In-wall carrier (see page 49).
- Cane apron (see page 50).



HTHB-HAC8BLPV-WF

# Mechanical Cooler



## Wall Mount ADA Cooler

Ideal for areas prone to service disruptions.

- Easy-to-operate front and side push-bar activation.
- Exclusive Halsey Taylor Double Bubbler.
- Rated for indoor use.

### AVAILABLE OPTIONS:

- Filtered/non-filtered.
- Single/bi-level/bi-level reverse.
- Refrigerated/non-refrigerated.
- Platinum vinyl/stainless steel.
- Sensor-activated/push-bar activated.
- Glass filler prepped.

### ACCESSORIES:

- WaterSentry filters (see page 7).
- In-wall carrier (see page 49).
- Cane apron (see page 50).





# ELECTRIC ADA COOLERS



*Front push-bar coolers adapt easily to existing plumbing systems.*



## Wall Mount

The Halsey Taylor HTVZ model has a versatile design, allowing bi-levels to be installed as high-low or low-high.

- Easy-to-operate solenoid-activated controls.
- Extra deep basin minimizes splashing and features an integral drain for a cleaner basin.
- WaterSentry 1,500-gallon capacity filter (filtered models only).
- Exclusive Halsey Taylor Double Bubbler.
- Rated for indoor use.

## AVAILABLE OPTIONS:

- Filtered/non-filtered.
- Single/bi-level.
- Refrigerated/non-refrigerated.
- Platinum vinyl/stainless steel.

## ACCESSORIES:

- WaterSentry filters (see page 7).
- In-wall carrier (see page 49).
- Cane apron (see page 50).



# RETROFIT



*Add a bottle filling station to existing fountains and coolers.*



## Bottle Filler Retrofit for HAC Models

Retrofit existing HAC push-bar activated coolers with a bottle filling station.

- Able to retrofit onto single and bi-level units.
- Bottle filler features sanitary, no-touch sensor activation with automatic 20-second shut-off timer.
- Quick fill rate is 1.1 - 1.5 GPM depending on cooler.
- Our Green Counter counts the quantity of 20 oz. plastic bottles of water served; without the plastic bottles.
- LED filter monitor to indicate when the filter needs replacing (filtered models only).
- Exclusive Halsey Taylor Double Bubbler.
- Rated for indoor use.

### AVAILABLE OPTIONS:

- Filtered/non-filtered.

# Retrofit HydroBoost



HTHBWF-OVL-RF



HTHBWF-HRF-RF

## Bottle Filler Retrofit for Architectural Refrigerated Models

In-wall retrofit system will update existing refrigerated bi-level OVL or Contour installations with an integrated bottle filler system.

- Reuses existing fountain, chiller and half the mounting frame.
- Bottle filler features sanitary, no-touch sensor activation with automatic 20-second shut-off timer.
- Quick fill rate is 1.1 GPM.
- Our Green Counter counts the quantity of 20 oz. plastic bottles of water served; without the plastic bottles.
- LED filter monitor to indicate when the filter needs replacing (filtered models only).
- Exclusive Halsey Taylor Double Bubbler.
- Rated for indoor use.

### AVAILABLE OPTIONS:

- Filtered/non-filtered.
- OVL/Contour styles

### ACCESSORIES:

- WaterSentry filters (see page 7).
- Cane apron (see page 50).

# VANDAL-RESISTANT



*Heavy-duty units are ideal for public spaces with high traffic.*



## Vandal-Resistant Bottle Filling Station with ADA Cooler

Full stainless steel construction is durable and easy to clean.

- Vandal-resistant cooler and bottle filling station in a consolidated space-saving ADA compliant design.
- Push-button activation with automatic 20-second shut-off timer on bottle filler.
- Quick fill rate is 1.1 to 1.5 GPM.
- Our Green Counter counts the quantity of 20 oz. plastic bottles of water served; without the plastic bottles.
- LED filter monitor to indicate when the filter needs replacing (filtered models only).
- Filtered models rated for indoor use; non-filtered rated for indoor and outdoor use.

### AVAILABLE OPTIONS:

- Filtered/non-filtered.
- Single/bi-level/bi-level reverse.
- Refrigerated/non-refrigerated.

### ACCESSORIES:

- WaterSentry filters (see page 7).
- In-wall carrier (see page 49).
- Cane apron (see page 50).





## Wall Mount ADA Cooler

Features tamper-resistant push-button activation and one-piece bubbler.

- Single-action mechanical push button is self-closing.
- Vandal-resistant pinned Torx screws.
- Vandal-resistant bubbler.
- Filtered models rated for indoor use; non-filtered rated for indoor and outdoor use.

### AVAILABLE OPTIONS:

- Filtered/non-filtered.
- Single/bi-level/bi-level reverse.
- Refrigerated/non-refrigerated.
- Frost resistant/standard.
- Louvered screens.

### ACCESSORIES:

- WaterSentry filters (see page 7).
- In-wall carrier (see page 49).
- Cane apron (see page 50).





# Heavy Duty Vandal-Resistant

HDF-EBP



## 14 Gauge ADA Fountain

Architectural drinking fountain in 14 gauge, heavy-duty construction features softly rounded corners and a contoured basin designed to provide a splash-resistant surface.

- Vandal-resistant front push button provides easy operation.
- Contoured profile offers safe, unobstructed access (non-refrigerated models).
- Removable louvered front ventilating grill encloses refrigeration and plumbing (refrigerated models).
- Slim profile is ideal for areas where children will be present (child models).
- Filtered models rated for indoor and outdoor use; non-filtered models rated for outdoor use.

### AVAILABLE OPTIONS:

- Child ADA/adult ADA
- Single/bi-level/bi-level reverse.
- Freeze resistant/standard.

### ACCESSORIES:

- WaterSentry filters (see page 7).
- In-wall carrier (see page 49).
- Cane apron (see page 50).

HDFB-BLEBP



# Heavy-Duty Vandal-Resistant



## Heavy-Duty, Vandal-Resistant Water Coolers

Ideal for schools and other heavy-use installations.

- Heavy-duty 14 gauge stainless steel cabinet with integrated basin.
- Built to last, resists stains and corrosion for years of service.
- Vandal-resistant bubbler and push button with pinned Torx screws.
- Filtered models rated for indoor use; non-filtered models rated for indoor and outdoor use.

### AVAILABLE OPTIONS:

- Filtered/non-filtered.
- Single/bi-level.
- Refrigerated/non-refrigerated.

### ACCESSORIES:

- WaterSentry filters (see page 7).
- In-wall carrier (see page 49).
- Cane apron (see page 50).





ARCHITECTURAL OVL-II™

*Attractively designed fountains complement any building style.*

# Architectural OVL-II



HTHBWF-OVLSER-I

## In-wall with OVL Style Fountains

Fully recessed in-wall design.

- Sanitary, no-touch sensor activation with automatic 20-second shut-off timer.
- Quick fill rate is 1.1 - 1.5 GPM.
- Exclusive Halsey Taylor Double Bubbler.
- Our Green Counter counts the quantity of 20 oz. plastic bottles of water served; without the plastic bottles.
- WaterSentry plus 3,000-gallon capacity filter (filtered models only).
- LED filter monitor to indicate when the filter needs replacing (filtered models only).
- Rated for indoor use.

### AVAILABLE OPTIONS:

- Filtered/non-filtered.
- Refrigerated/non-refrigerated/green refrigeration.
- Halsey Taylor Double Bubbler/vandal-resistant bubbler.
- Integrated or paired with in-wall fountains.

### ACCESSORIES:

- WaterSentry filters (see page 7).
- Mounting frame (see page 49).
- Cane apron (see page 50).



HTHBWF-OVLSERGRN



## ADA Fountain

Features sleek styling with a contoured oval basin designed to provide a splash-resistant surface.

- Standard with surface mounting plate.
- Removable louvered front ventilating grill encloses refrigeration and plumbing (refrigerated models).
- Exclusive Halsey Taylor Double Bubbler.
- Filtered models rated for indoor use; non-filtered, vandal-resistant bubbler models rated for outdoor use.

### AVAILABLE OPTIONS:

- Filtered/non-filtered.
- Single/bi-level.
- Refrigerated/non-refrigerated.
- Sensor-activated/push button.
- Halsey Taylor Double Bubbler/vandal-resistant bubbler.
- Freeze resistant/standard.
- Marblyte™/stainless steel.

### ACCESSORIES:

- WaterSentry filters (see page 7).
- In-wall carrier (see page 49).
- Mounting frame (see page 49).
- Cane apron (see page 50).



# ARCHITECTURAL CONTOUR™



*Bottle fillers and fountains designed to look great with all architectural building styles.*



Note: Shown with optional access panel (see page 51).

## Bottle Filling Station Paired with Soft Sides® Fountain

Complete in-wall, water station includes recessed bottle filler and architectural water fountain.

- Bottle filler features sanitary, no-touch sensor activation with automatic 20-second shut-off timer.
- Quick fill rate is 1.1 to 1.5 GPM.
- Our Green Counter counts the quantity of 20 oz. plastic bottles of water served; without the plastic bottles.
- LED filter monitor to indicate when the filter needs replacing (filtered models only).
- Rated for indoor use.

### AVAILABLE OPTIONS:

- Filtered/non-filtered.
- Single/bi-level.
- Refrigerated/non-refrigerated.
- Halsey Taylor Double Bubbler/vandal-resistant bubbler.
- Integrated or paired with in-wall fountains.

### ACCESSORIES:

- WaterSentry filters (see page 7).
- Cane apron (see page 50).
- Access panel (see page 51).



HTHBWF-HRFSER



## ADA Fountain

Soft Sides architectural drinking fountain features softly rounded corners and a contoured basin.

- Automatic stream height regulator. provides constant stream.
- Attractive curved profile offers safe, unobstructed access.
- Removable louvered front ventilating grill encloses refrigeration and plumbing (refrigerated models).
- Standard with mounting frame.
- Exclusive Halsey Taylor Double Bubbler is standard.
- Filtered models rated for indoor use; non-filtered, vandal-resistant bubbler models rated for outdoor use.

### AVAILABLE OPTIONS:

- Filtered/non-filtered.
- Single/bi-level/bi-level reverse.
- Refrigerated/non-refrigerated
- Halsey Taylor Double Bubbler/vandal-resistant bubbler.
- Freeze resistant/standard.
- Marblyte, gray or black.

### ACCESSORIES:

- WaterSentry filters (see page 7).
- In-wall carrier (see page 49).
- Cane apron (see page 50).
- Access panel (see page 51).







IN-WALL AND SURFACE MOUNT

*Bottle fillers designed to easily install in areas where space is limited.*

# In-Wall and Surface Mount



HTHB8-WF

## In-wall and Surface Mount Bottle Filling Station

Ideally suited for installation in public areas with limited space.

- Sanitary, no-touch sensor activation with automatic 20-second shut-off timer.
- Quick fill rate is 1.1 to 1.5 GPM.
- Our Green Counter counts the quantity of 20 oz. plastic bottles of water served; without the plastic bottles.
- LED filter monitor to indicate when the filter needs replacing (filtered models only).
- Rated for indoor use.

### AVAILABLE OPTIONS:

#### In-wall

- Filtered/non-filtered.
- Refrigerated/non-refrigerated.
- Paired with fountains or stand alone.
- Standard refrigerated/green refrigeration.

#### Surface Mount

- Filtered/non-filtered.
- Paired with remote chiller/non-refrigerated.

### ACCESSORIES:

- WaterSentry filters (see page 7).



HTHBSM-WF



OUTDOOR

*Weather-resistant finish is ideal for parks, campuses, golf courses and other outdoor venues.*



4405BFRED



4400BFBLU



4420BFDBEVG

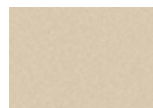
## Bottle Filling Stations

Corrosion-resistant, tubular wall-mounted and pedestal bottle fillers are perfect for busy parks and recreational areas.

- Constructed from heavy-duty, 1/4" thick cold rolled steel.
- Vandal-resistant bubbler with push-button activation.
- Quick fill rate is 1.1 GPM.
- Powder-coated exterior over a corrosion-resistant primary coating to provide superior protection from the elements.
- Pet fountain features slow drainage for easy drinking.

### AVAILABLE OPTIONS:

- Wall mount, freestanding single, bi-level, triple stations and pet fountains.
- (SFRK) Sanitary, freeze resistant/(FRK) freeze resistant/standard.
- Available in 12 finish colors (see below). Use three letter code to order.



Beige (BGE)



Black (BLK)



Blue (BLU)



Brown (BRN)



Evergreen (EVG)



Gray (GRY)



Orange (ORN)



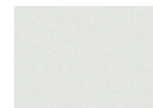
Purple (PUR)



Red (RED)



Terracotta (TER)



White (WHT)



Yellow (YLW)

### ACCESSORIES:

- Locking hose bib (see page 50).
- Non-locking hose bib (see page 50).
- Direct bury kit (see page 50).



4405ORN



4400DBGY



4420PUR

## Wall Mount, Pedestal and ADA Pedestal Fountains

Heavy-duty construction and attractive design come together to provide hydration that is ideal for outdoor pavilions, park pools, schools and buildings of all types.

- Constructed from heavy-duty, 1/4" thick cold rolled steel.
- Vandal-resistant bubbler with push-button activation.
- Powder-coated exterior over a corrosion-resistant primary coating to provide superior protection from the elements.
- Pet fountain features slow drainage for easy drinking.

### AVAILABLE OPTIONS:

- Wall mount, freestanding single, bi-level, triple stations and pet fountains.
- (SFRK) Sanitary, freeze resistant/(FRK) freeze resistant/standard.
- Available in 12 finish colors (see previous page). Use three letter code to order.

### ACCESSORIES:

- Locking hose bib (see page 50).
- Non-locking hose bib (see page 50).
- Direct bury kit (see page 50).



## Sierra™ Stone Aggregate Fountains

Durable fountains are ideal for public spaces such as parks and recreational areas.

- Weather-resistant stone aggregate finish.
- Single-stream push-button bubbler (on select models).
- Rust-resistant stainless steel access door with vandal-resistant screws.

### AVAILABLE OPTIONS:

- Vandal-resistant bubbler/standard bubbler.
- Freeze resistant/standard.
- Wall mount, single and dual stations.





### Outdoor Cast Iron Fountains

Attractive fountain with chrome-plated exposed fittings.

- Cast iron base with stainless steel basin.
- Automatic stream height regulator.
- Forest green powder-coated exterior finish.

#### AVAILABLE OPTIONS:

- Freeze resistant (select models).



# SPECIALTY



*Specialty fountains are ideal for unique installation settings.*





## Bracket Drinking Fountain

- Durable stainless steel basin.
- Chrome-plated exposed fittings for appearance and added durability.



## Countertop Drinking Fountain

- Durable stainless steel basin is contoured to minimize splashing.



## Multi-Station Drinking Fountain

- Built-in backsplash.
- Vandal-resistant bottom cover plate included.

### AVAILABLE OPTIONS:

- Some models available with circular or oval basin.
- Some models available with push-button bubblers.
- Some models available with two or three stations.

# LEGACY



*Traditional styling is ideal for replacement applications.*



HBW8A PV

## Fully and Semi-recessed Backsplash Drinking Fountains

Classic one-piece stainless steel backplash and basin.

- Deeply recessed backplash provides ample headroom.
- Easy-clean and anti-splash rim basin.
- Includes chiller.
- Exclusive Halsey Taylor Double Bubbler.
- Rated for indoor use.

### AVAILABLE OPTIONS:

- Filtered/non-filtered.
- Refrigerated/non-refrigerated.
- Some models available in color options.

### ACCESSORIES:

- WaterSentry filters (see page 7).
- Some models available with push-button glass filler in basin (see page 51).



WC8FS PV



BFMR



WM8A PV

## Wall Mount Water Coolers

Classic style wall-mounted cooler with compact cabinet.

- Easy-clean and anti-splash rim basin.
- Push-button activation.
- Removable panels for easy servicing.
- Exclusive Halsey Taylor Double Bubbler.
- Rated for indoor use.

### AVAILABLE OPTIONS:

- Filtered/non-filtered.
- Single/bi-level.
- Refrigerated/non-refrigerated.
- A variety of GPH options.
- Some models available in color options.

### ACCESSORIES:

- WaterSentry filters (see page 7).



SWA4 PV



S500 PV

## Floor Model Coolers

Classic style free-standing or wall-tight cooler with compact cabinet.

- Compact design for floor installations.
- Easy clean and anti-splash rim basin.
- Exclusive Halsey Taylor Double Bubbler.
- Rated for indoor use; some models available for outdoor use.

### AVAILABLE OPTIONS:

- Filtered/non-filtered.
- Refrigerated/non-refrigerated.
- A variety of GPH options.
- Some models available in color options.
- Some models available with hot/cold service.
- Some models available with glass filler option.

### ACCESSORIES:

- WaterSentry filters (see page 7).



SCWT8 PV



## REMOTE CHILLERS

*Convert fountains into refrigerated coolers by installing a compact chiller within or behind walls.*



SJ8GRN

## Remote Chillers

For use with drinking fountains or under-counter applications to dispense chilled water.

- Galvanized steel cabinet.
- Hermetically sealed compressor.
- Chillers can handle multiple units.
- Rated for indoor use.

### AVAILABLE OPTIONS:

- Variety of GPH options and high-efficiency green units available.

### ACCESSORIES:

- Chiller shelves (see page 50).
- Chiller wall box (see page 50).



SJ1

# ACCESSORIES



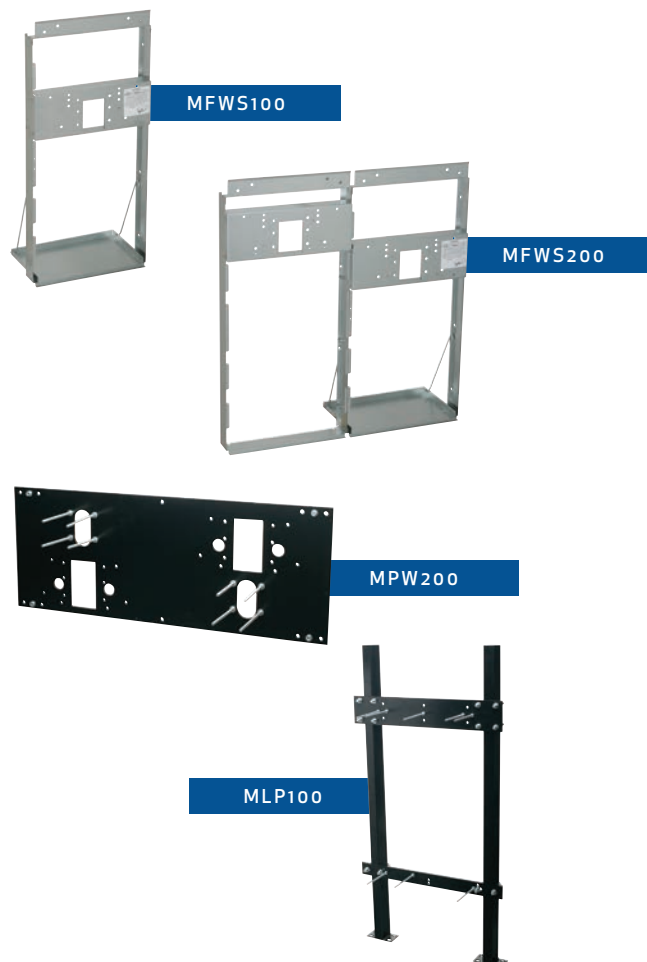
*Custom accessories can add to the functionality of your cooler, fountain or bottle filling station.*





## Bubblers

Replacement styles for any need.



---

## Mounting Frames and In-wall Carriers

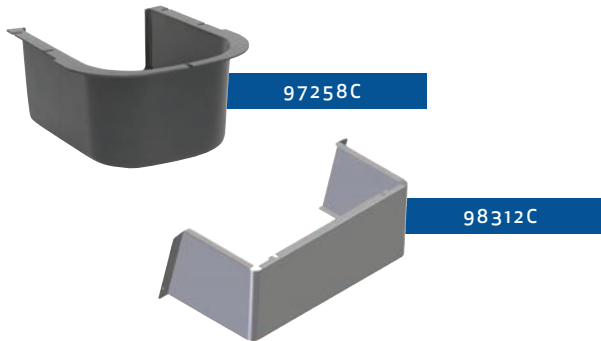
Frames for attaching a variety of styles of coolers and fountains. Available for single and bi-level models.



## Outdoor Accessories

For additional functionality on specific outdoor units.

- Non-locking hose bib.
- Locking hose bib.
- Direct bury kit.



## Cane Aprons

For use in specific bi-level applications.



## Chiller Accessories

For additional functionality on remote chillers.

- Wall shelf.
- Wall box.

96852CA



## Glass Fillers

Add a filler to certain water coolers and fountains.

730240851640



---

## Access Panel

For behind the wall access to architectural fountains, coolers and bottle fillers (shown with Contour HydroBoost).

ACCESS12X38-5



*Halsey Taylor*

Home Office:  
2222 Camden Court | Oak Brook, Illinois 60523  
630.574.8484  
Customer Care: 800.476.4106

When calling, have the model and serial number information  
from the data label available.

©2016 Halsey Taylor

Note: This catalog supercedes all previously printed catalogs.



Printed in the U.S.A. on recycled paper

Continued product improvements makes specifications and products subject to change without notice.