

DOUBLE DRUM ROLLER



**POWER
YOUR
WORLD**

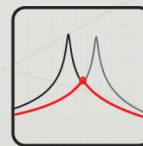


Specifications

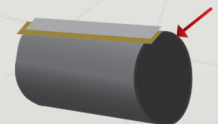
Engine Type	Honda GX630
Power	20.8 HP
Drum Width	35.4 in
Drum Diameter	22 in
Number of Vibrating Drums	1/Front Wheel
Driving System	Hydraulic
Number of Driving Drums	2/Front and Rear Wheels
Dynamic Centrifugal Force per Drum	15 kN
Frequency	60 Hz
Left Side Clearance	3.54 in
Right Side Clearance	3.94 in
Left Curb Clearance	8.19 in
Right Curb Clearance	9.45 in
Forward/Reverse Speed	0 - 4.7 mph
Maximum Gradeability	30%
Turning Radius	8.22 ft
Water Tank Capacity	26 gal
Fuel Tank Capacity	6 gal
Light	2(Front), 2(Back), Warning Lamp (Overhead)
Dimensions	71.81 x 41.34 x 90.16 in
Net Weight	2315 lbs
Operating Weight	2491 lbs

FEATURES

- Air-cooled 630cc / 20.8 HP Honda GX630 Engine
- 35.4 inch seamed edge drums for markless compaction
- Compact design allows for flush compaction near walls
- Articulated power-assist for greater maneuverability
- Connected hydraulic pump & motor for smooth operation
- Easy accessible flip-open hood for daily maintenance
- Large 26-gal pressurized tank for consistent water flow
- Adjustable seat to maximize operator comfort



Optimum vibration



**Seamed edge drums
for markless compaction**



**Easy & safe
to operate**



**1-year product warranty
3-year warranty on engine**