

JXPT36K / JXPT46K

Specifications

Model	JXPT36K	JXPT46K
Size	36 Inch	46 Inch
Engine	Kohler CH260	Kohler CH440
Displacement	208cc	429cc
Rotor Speed	60-120 RPM	60-120 RPM
Blades	4 Combo Blades	4 Combo Blades
Blade Pitch	0-28°	0-28°
Includes Pan	Yes	Yes
Package Dimensions	34"x41"x41"	41"x41"x33"
Package Weight	286 lbs	404 lbs



A BICYCLE HANDLEBARS
Wider handlebars allow for higher stability, balance, and maneuverability

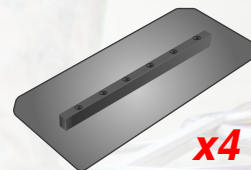
B BLADE PITCH CONTROL
Adjust the trowel's steel blades from 0-28 degrees to achieve a matte, light gloss, or gleaming finish!

C HANDLE ADJUSTMENT
Make quick adjustments to the handle's height for greater trowel maneuverability.

**KOHLER
ENGINES**

Powered by Kohler Engines
CH260 / CH440

Adjustable Blade Speed
from 60-120 RMP



x4

Hardened/Tempered
Combination Steel Blades



Steel Float Pan
for Super Flat Floors



Easy to Pick Up
with Two People



3 Year Engine Warranty
1 Year Product Warranty

FEATURES

- Powered by Kohler Engines
- Blade pitch control adjusts from 0-28 degrees
- Includes float pan and 4 combo hardened, steel blades
- Safety Shut Off Switch for greater job site protection
- Heavy duty gearbox design provides maximum torque
- Blades interchangeable with most manufacturers
- Economically replaceable parts for lower service costs
- 3 Year Kohler Engine Warranty / 1 Year Total Warranty