

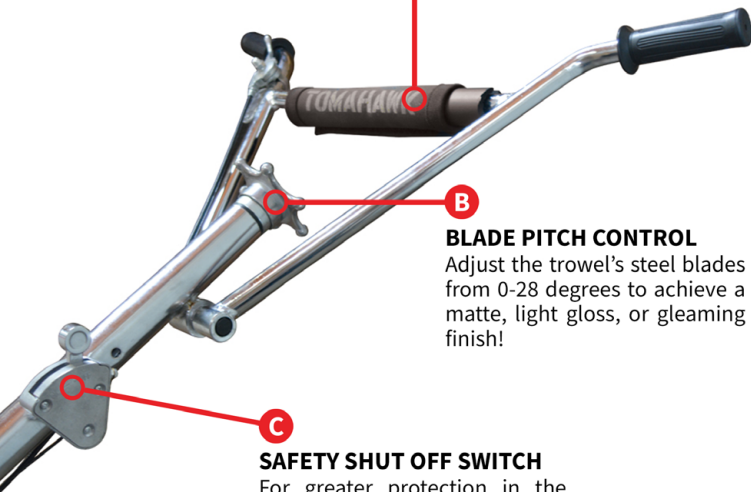
JXPT36K / JXPT46K

Specifications

Model	JXPT36K	JXPT46K
Size	36 Inch	46 Inch
Engine	Kohler CH260	Kohler CH440
Displacement	208cc	429cc
Rotor Speed	60-120 Max RPM	60-120 Max RPM
Blades	4 Combo Blade	4 Combo Blade
Blade Pitch	0-28°	0-28°
Includes Pan	Yes	Yes
Dimensions	70"x36"x41"	75"x46"x41"
Operating Weight	204 lbs	281 lbs



A BICYCLE HANDLEBARS
Wider handlebars allow for higher stability, balance, and maneuverability



B BLADE PITCH CONTROL
Adjust the trowel's steel blades from 0-28 degrees to achieve a matte, light gloss, or gleaming finish!

C SAFETY SHUT OFF SWITCH
For greater protection in the event an operator loses control of the trowel, this switch will shut down the engine.

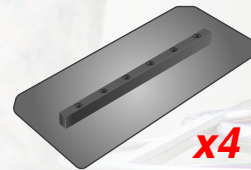
FEATURES

- Powered by Kohler Engines
- Blade pitch control adjusts from 0-28 degrees
- Includes float pan and 4 combo hardened, steel blades
- Safety Shut Off Switch for greater job site protection
- Heavy duty gearbox design provides maximum torque
- Blades interchangeable with most manufacturers
- Economically replaceable parts for lower service costs
- 3 Year Kohler Engine Warranty / 1 Year Total Warranty

KOHLER
ENGINES

Powered by Kohler Engines
CH260 / CH440

Adjustable Blade Speed
from 60-120 RMP



x4

Hardened/Tempered
Combination Steel Blades



Steel Float Pan
for Super Flat Floors



Easy to Pick Up
with Two People



3 Year Engine Warranty
1 Year Product Warranty