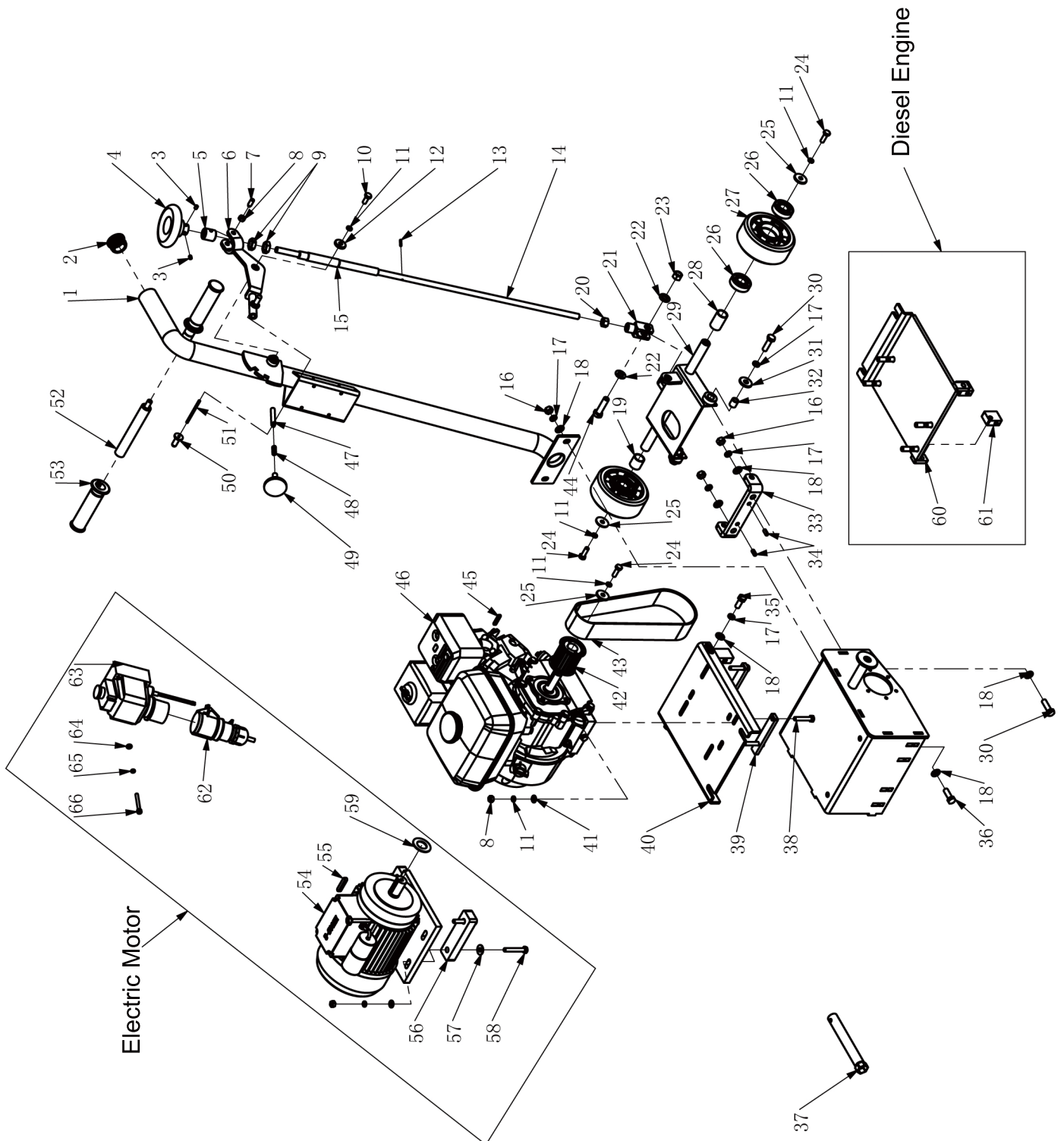


SPARE PARTS LIST



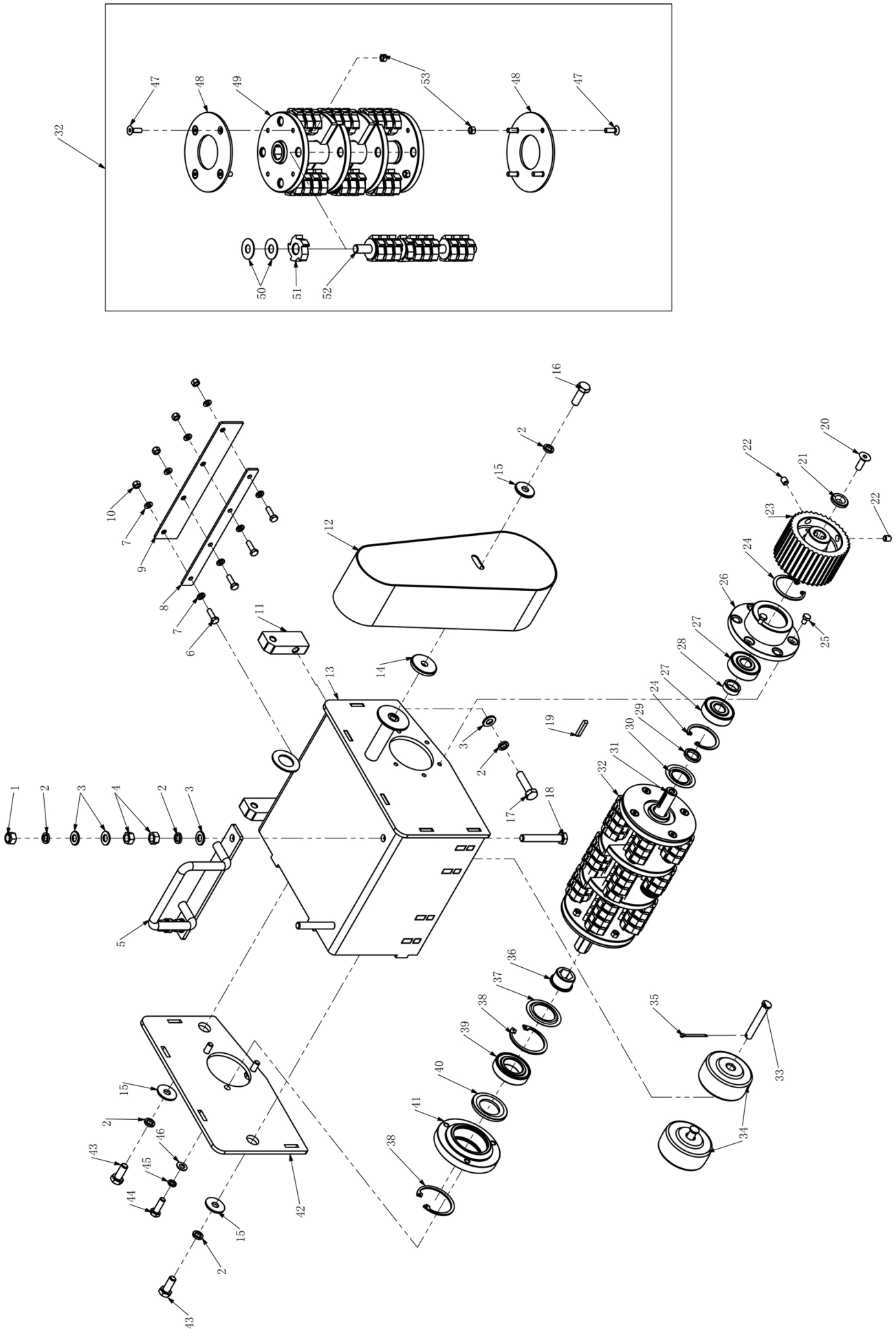
## Handle And Engine

No.	Description	Drawing No.	Qty
1	Handle Bar Assy.	1001-09000-3	1
2	Vac Cap	1001-00024-4	1
3	Set Screw M6x8	16060805	2
4	Handle Wheel	1001-00027-4	1
5	Bushing	1001-00018-1	1
6	Lift-Off Handle	1001-10000-3	1
7	Set Screw M8x20	150802016	2
8	Nut M8	13080000	9
9	Nut M16	13160004	2
10	Bolt M8x20	15080200	1
11	Spring Washer M8	12080000	11
12	Washer M8x26x4	11082604	1
13	Spring Pin $\Phi$ 3x16	19031601	1
14	Adjustment Bar	1001-00017-1	1
15	Adjustment Tube	1001-02000-3	1
16	Nut M10	13100000	4
17	Spring Washer M10	12100000	8
18	Washer M10	11100000	10
19	Bushing	1001-00012-1	1
20	Nut M12	13120000	1
21	Fork Head	1001-00020-4	1
22	Washer M12	11120000	2
23	Lock Nut M12	13120001	1
24	Bolt M8x25	15080250	3
25	Washer M8x30x3	11083003	3
26	Bearing 6204	216204-2R	4
27	Wheel	24125501	2
28	Bushing (Long)	1001-00013-1	1
29	Wheel Shaft Assy.	1001-07000-3	1
30	Bolt M10x35	15100350	4
31	Washer M10x30x3	11103003	2
32	Washer	1001-00035-4	2
33	Wheel Balance Holder	1001-00003-2	1
34	Spring Pin $\Phi$ 6x16	19061603	2
35	Bolt M10x25	15100250	2
36	Bolt M10x30	15100300	2
37	Wrench	89218-ZE1-000C	1
38	Bolt M8x45	15080450	4
39	Base Plate for Engine	1001-00015-2	2
40	Base Support for Engine	1001-00001-2	1
41	Washer M8	11080000	7
42	Gear	1001-06100-4	1
43	Belt	27HTD720-8M	1
44	Bolt M12x45	15120450	1
45	Key 5x30	12050530A	1

## Handle And Engine

No.	Description	Drawing No.	Qty
46	Engine	25160001	1
47	Fixation Pin	1001-00019-1	1
48	Spring	1001-00023-4	1
49	Knob M10x20	1001-00026-4	1
50	Finger Knob	1001-00025-4	2
51	Shaft for Finger Knob	1001-00022-4	1
52	Handle	1001-03000-3	2
53	Handle Grip	70220000	2
54	Electric Motor	25000019	1
55	Key 8x40	20080740A	1
56	Rubber Plate for Electric Motor	1001-00036-4	2
57	Washer M8x22x2	11082202	4
58	Bolt M8x55	15080550	4
59	Washer	1001-00050-2	1
60	Diesel Engine Plate	1001-15000-3	1
61	Support, Diesel Engine Plate	1001-00051-2	2
62	Wire Assy.	1001-14000-1	1
63	Safety Switch	1001-00045-4	1
64	Washer M6	11060000	2
65	Spring Washer M6	12060000	2
66	Allen Screw M6x55	16065503	2

# SPARE PARTS LIST





**Body**

<b>No.</b>	<b>Description</b>	<b>Drawing No.</b>	<b>Qty</b>
1	Lock Nut M10	13100001	2
2	Spring Washer M10	12100000	9
3	Washer M10	11100000	10
4	Nut M10	13100000	4
5	Handle Bar	1001-01000-3	1
6	Bolt M6x20	15060200	4
7	Washer M6	11060000	8
8	Wear Plate	1001-00014-2	1
9	Dust Skirt	1001-00030-4	1
10	Lock Nut M6	13060001	4
11	Base Plate Support	1001-00002-2	2
12	Belt Cover	1001-05000-3	1
13	Housing for Cutter	1001-08000-3	1
14	Washer M10x40x5	11104005	1
15	Washer M10x30x3	11103003	3
16	Bolt M10x30	15100300	1
17	Bolt M10x40	15100400	2
18	Bolt M10x70	15100700	2
19	Key 5x30	12050530A	1
20	Allen Screw M8x25	16082504	1
21	Washer	1001-00049-1	1
22	Set Screw M8x10	16081005	2
23	Shaft Gear	1001-00016-4	1
24	Circlip $\Phi$ 47	18470002	2
25	Bolt M6x10	15060100	6
26	Bearing Housing Left	1001-00004-4	1
27	Bearing 6303	216303-2Z	2
28	Collar (Long)	1001-00005-1	1
29	Collar (Short)	1001-00032-1	1
30	Spacer (Small)	1001-00033-4	1
31	Hexagon Shaft	1001-00009-4	1
32	Drum Assy.	1001-12000-1	1
33	Front Axle	1001-00010-1	2
34	Front Wheel	1001-00029-1	2
35	Pin 3x30	19032003	2
36	Hexagon Bushing	1001-00011-1	1
37	Spacer (Big)	1001-00034-4	1
38	Circlip $\Phi$ 55	18550002	2
39	Bearing 6006	216006-2Z	1
40	Spacer	1001-00008-4	1
41	Bearing Housing Right	1001-00007-4	1
42	Housing Cover Right	1001-00006-2	1
43	Bolt M10x25	15100250	2
44	Bolt M8x25	15080250	3
45	Spring Washer M8	12080000	3
46	Washer M8	11080000	3
47	Allen Screw M6x20	16062004	8

**Body**

<b>No.</b>	<b>Description</b>	<b>Drawing No.</b>	<b>Qty</b>
48	Safety Plate Cover	1001-00021-2	2
49	Drum Body of Cutter	1001-04000-3	1
50	Washer 12x30x1	1001-00040-4	144
51	Cutter	1001-0004X-4	42/84
52	Cutter Shaft	1001-00031-4	4
53	Lock Nut M6	13060001	8