

DO WALL
OUTDOORS



FLYWAY 90

INCLUDED PARTS



Trap Head



(4) Legs



Trap Head Base with (4) 19MM head Bolts, (4) Steel Washers and (4) Rubber Washers to connect Trap Head to Base



(4) 14MM Bolts to attach Legs to Trap Base



Main Spring and Spade Bolt



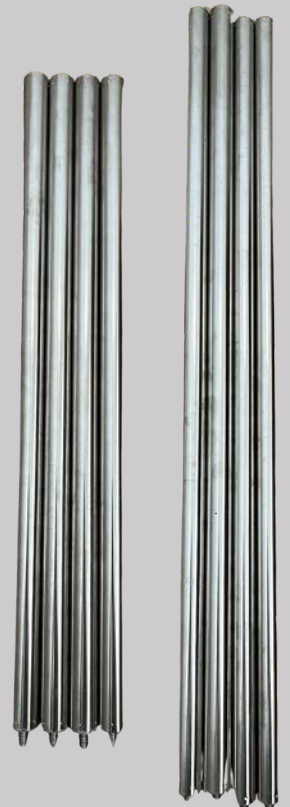
(2) Horseshoes and (4) 10mm Bolts



Foot Pedal

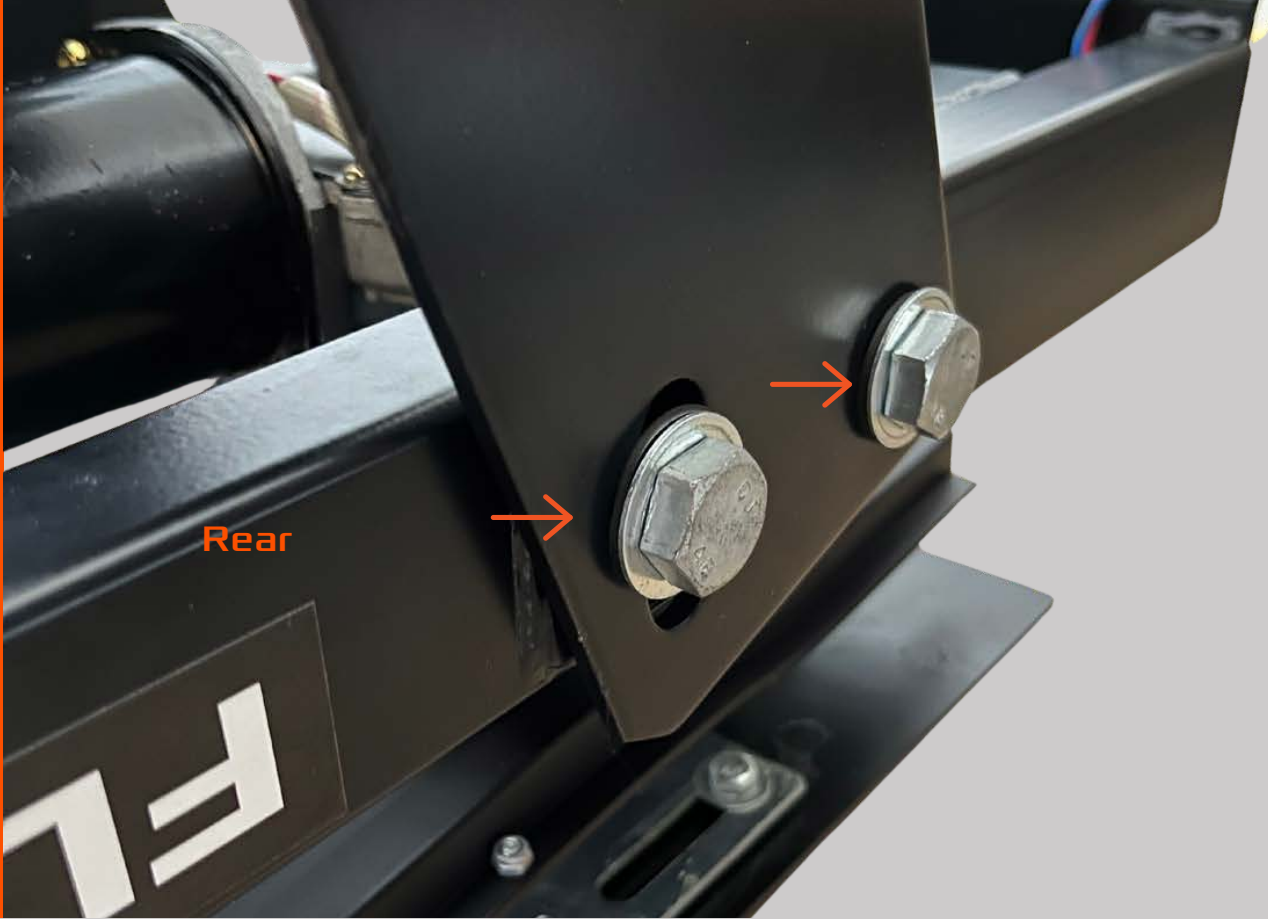


Safety Ring



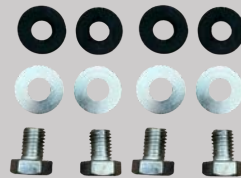
Stacker Poles (2) small diameter long, (2) short diameter long and (4) short

TOOLS NOT INCLUDED

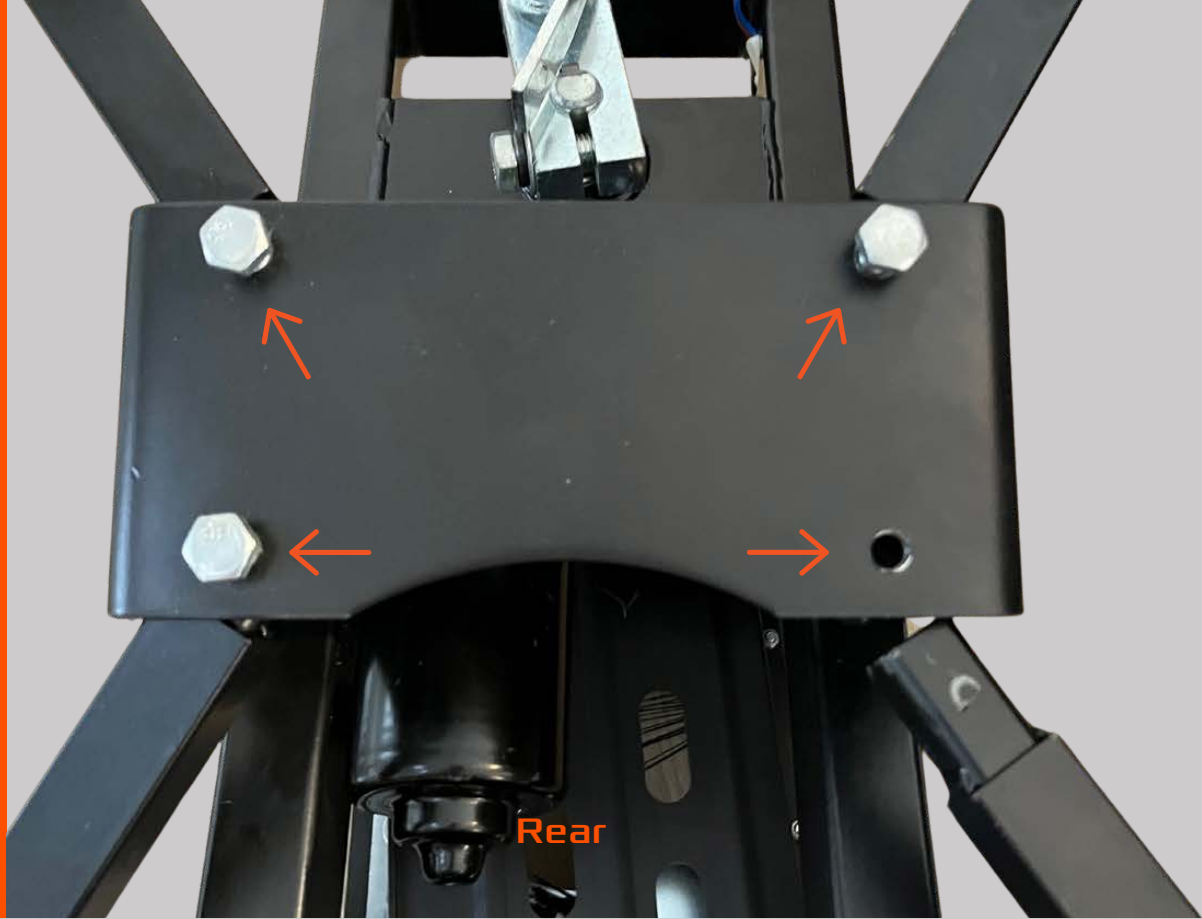


Rear

STEP 1



Begin by flipping the Trap Head upside down. First, attach the Trap Base to the Trap Head using the provided 19mm Bolts, Steel Washers and Rubber Washers, which thread from the outside in on each side of the rear of the trap, as shown above. Tighten with a socket. Be sure the adjustable bolt holes are closer to the rear of the Trap.



STEP 2



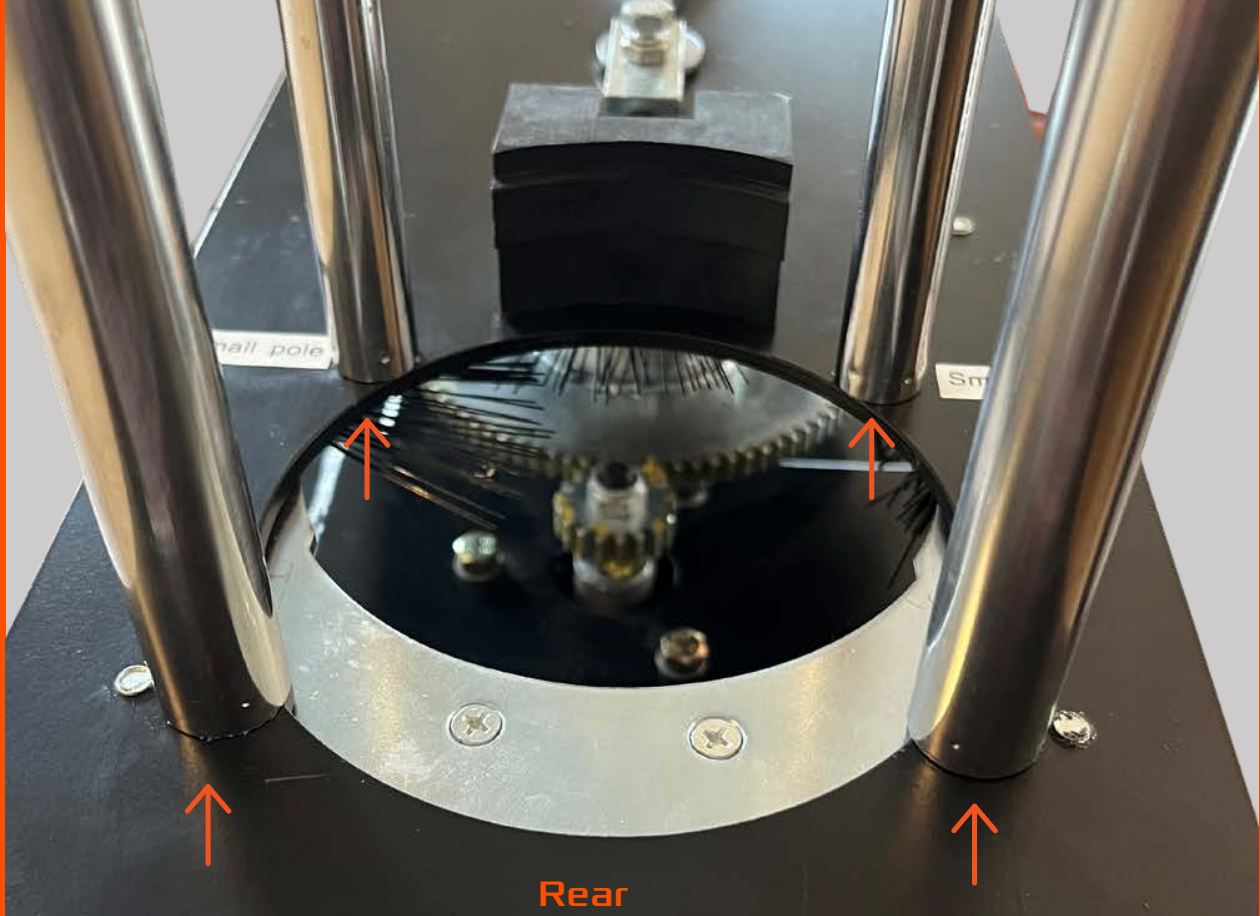
own above. Tighten with a socket. Be sure the adjustable bolt holes are closer to the rear of the Trap.



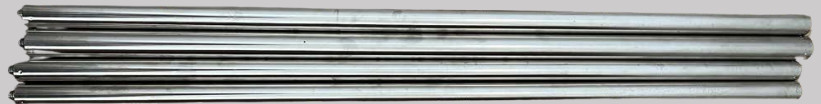
STEP 3



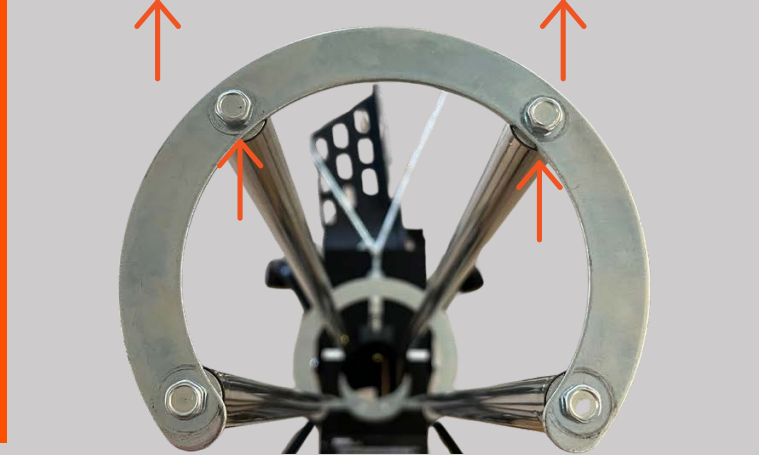
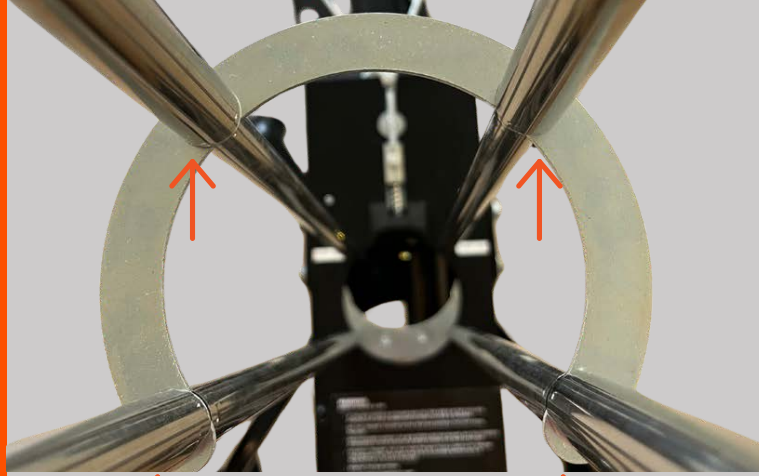
Now, rotate the throwing arm out to the 12 o'clock position as depicted above. Hook Main Spring onto the eyelet towards the front of the Trap Head. Remove the outer nut and slide the Spade Bolt through the hole in the rear of the trap. Then, secure the nut back onto the Spade Bolt. Tighten until 3-4 threads are exposed on the rear of the Spade Bolt. Use this as a starting point for your trap, tighten or loosen to desired tension after testing the trap's throw once the remaining assembly is complete. **NOTE: Do not adjust interior nut on Spade Bolt, indicated by a black arrow above.**



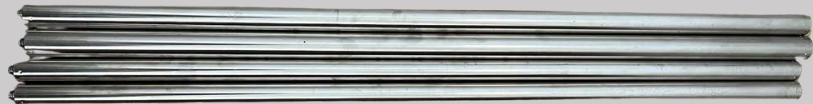
STEP 4



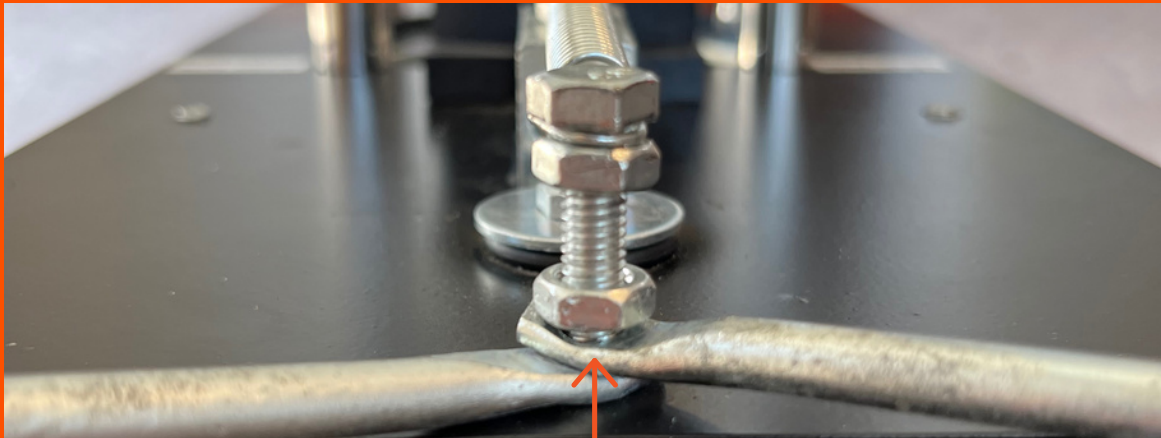
With the Trap now standing upright, thread the 4 longer Stacker Poles on to the top of the Trap Head. The 2 smaller diameter poles go in the front, which are indicated with stickers.



STEP 5



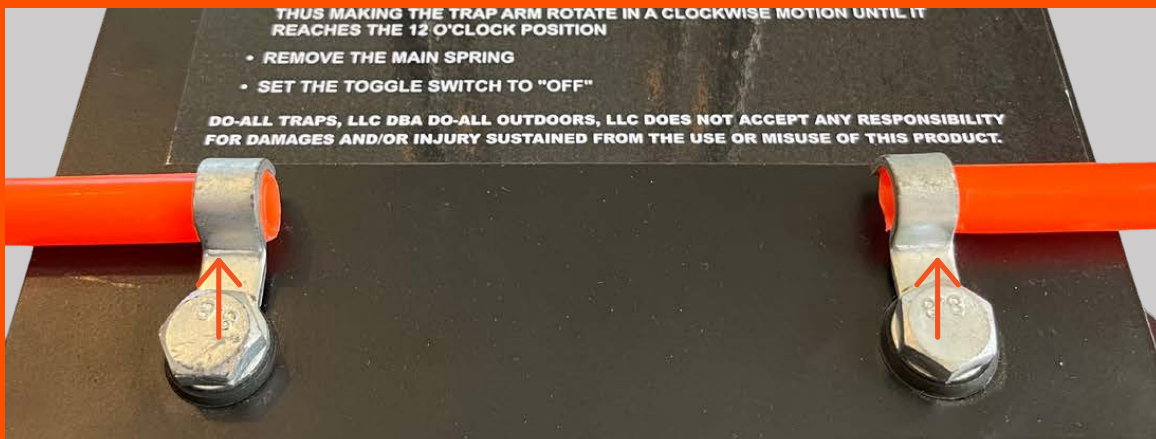
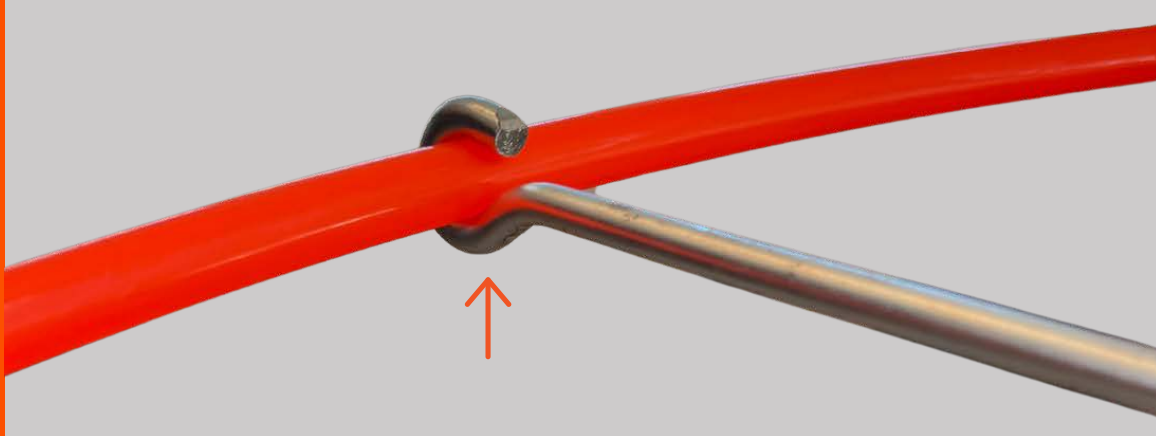
Thread the male end of the remaining 4 poles through the first horseshoe into the long poles and tighten. Place the last horseshoe facing the rear of the trap on top of the pole setup and thread the 11MM screws through the horseshoe into the poles and tighten.



STEP 6



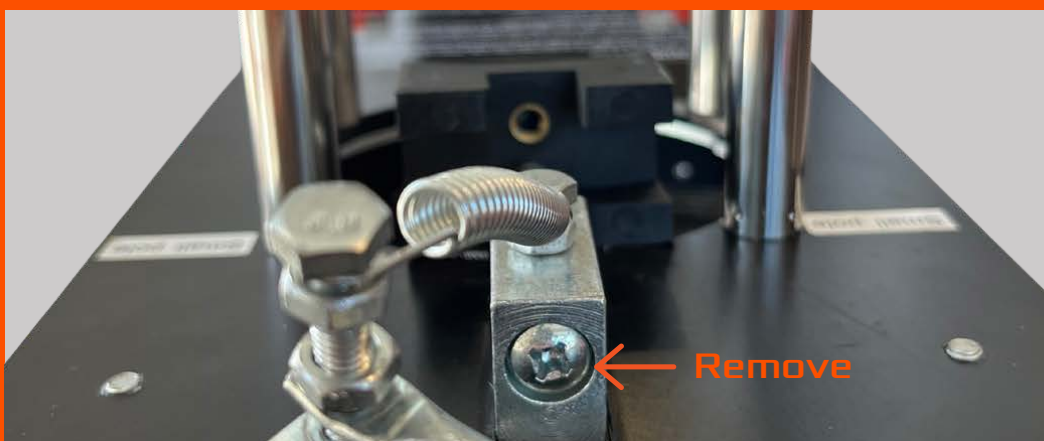
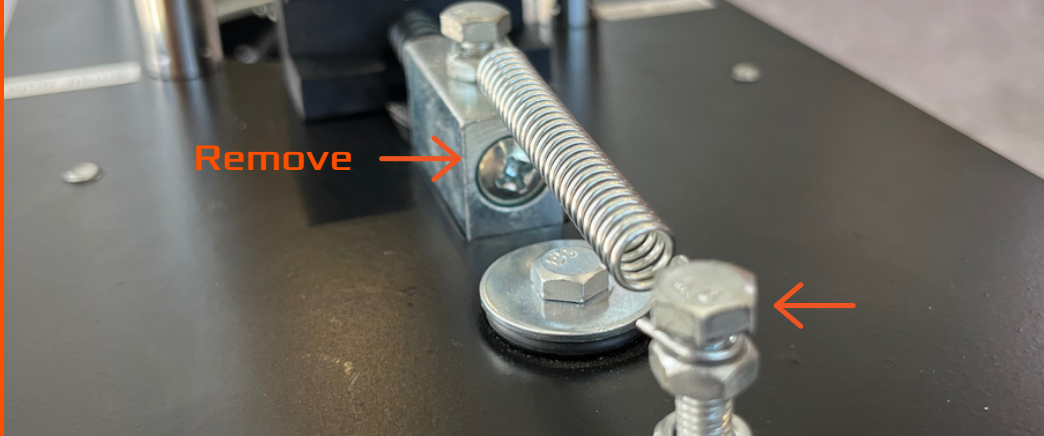
Using a 10MM socket, remove the bolt with the plunger spring attached. The spring will want to pull the bolt back so as you get close to removing the bolt be sure to hold the bolt and spring. Take the safety ring arms and push the bolt through the two holes in the arms making sure the two nuts stay on the bolt. Thread the bolt back into the hole you just unscrewed it from. When it seats far enough to hold the spring in, take the bottom nut and hand tighten it to the top of the safety ring arm and the top nut and hand tighten it to hold the spring in place against the head of the bolt.



STEP 7



Loosen the 14MM bolts towards the back of the trap head and slide each side of the safety ring under the clip. Snap the ring into each arm hook so it makes a full circle around the trap and tighten the 14MM bolts to hold down the ends.



Switching between Singles and Doubles



With the trap disengaged, the throwing arm at 12 o'clock, the battery disconnected, and the pigeon stack empty. Use a 10MM socket/wrench to unscrew the bolt holding the plunger spring and safety ring arms. Remember to hold the spring as the bolt comes out as it will try pull it back. Once the spring has been removed, use a Phillips head screwdriver to remove the plunger back into the feeding hole and rotate 180 degrees. Push the plunger back and reinstall spring and bolt into the lower threads on the plunger. This process will switch the trap from throwing singles to doubles.



THANK YOU

ONCE THE MAIN SPRING IS INSTALLED, THE TRAP IS NOW LIVE AND CAN GO OFF IF LEFT IN THE COCKED POSITION. PLEASE USE EXTREME CAUTION AND ALWAYS REMOVE SPRING WHEN TRANSPORTING, ADJUSTING, OR STORING THE TRAP.

Operation

1. Make sure deep cycle battery (not included) is fully charged. Before clamping trap alligator clips to battery, make sure the toggle switch on the trap is set to off. ****NEVER CARRY TRAP BY THROWING ARM - THIS CAN BEND AND AFFECT PERFORMANCE!**
2. Connect foot pedal to the corded 3 prong plug coming out of the trap. ****NEVER PLUG THIS INTO A WALL.**
3. Connect red alligator clip to the positive battery post and the black alligator clip to the negative battery post.
4. Flip the toggle switch on the trap up to "disarm." Once arm moves to 12 o'clock position, turn the machine back off and load **STANDARD SIZE CLAYS ONLY** into the stacker tube assembly. Once the trap is loaded, you can flip the toggle switch down to "on." The arm will rotate counter-clockwise and automatically load a clay onto the throwing arm. **THE TRAP IS NOW COCKED. PLEASE USE EXTREME CAUTION.**
5. **ALWAYS** set trap up pointing away from bystanders, trees, and animals with a recommended 400 meter open field/shot fall zone. Always look over the trap for damage and test throw a few clay pigeons before use to make sure the trap is operating properly. **NEVER ADJUST TRAP WHEN COCKED AND IN FIRING POSITION!!!**
6. With the shooter/bystanders standing to the left or behind the trap, press the foot pedal to throw the clay!
7. When you are done shooting, switch the toggle switch to disarm, hold the foot pedal down until the throwing arm reaches 12 o'clock, and turn the toggle switch to off. The trap is now safe to unload/move.

Troubleshooting

*****ALWAYS REMOVE MAIN SPRING PRIOR TO TROUBLESHOOTING*****

MACHINE NOT TURNING ON

1. CHECK BATTERY CONNECTION. THE MACHINE DRAWS 16 AMPS TO WORK PROPERLY. WE RECOMMEND A DEEP CYCLE BATTERY WITH A MINIMUM OF 675 COLD CRANKING AMPS.
2. CHECK THE 15A AUTOMOTIVE BLADE FUSE IN THE REAR OF THE TRAP HEAD. REMOVE THE COVER AND PULL THE FUSE OUT TO INSPECT. REPLACE AS NEEDED. SEE FIGURE 1 ON THE NEXT PAGE.
3. CHECK RELAY. PLEASE EMAIL OR CALL CUSTOMER SERVICE IF ISSUES CONTINUE.

AUTO FIRING/NOT FIRING

1. IF THE TRAP CONTINUES TO FIRE, UNPLUG THE FOOT PEDAL. IF IT STOPS, THE SCREWS ON THE FOOT PEDAL NEED TO BE LOOSENED TO DEPRESS THE PEDAL DURING OPERATION.
2. IF FOOT PEDAL ISSUES CONTINUE, PLEASE SEE OUR TROUBLESHOOTING PAGE ON OUR WEBSITE FOR TESTING YOUR FOOT PEDAL.
3. ONCE YOU HAVE ESTABLISHED YOUR FOOT PEDAL IS NOT THE ISSUE, MOVE ON TO THE LIMIT SWITCH. SEE FIGURE 2 ON THE NEXT PAGE FOR LOCATION. IF YOUR TRAP CONTINUES TO AUTO FIRE, USE A 2.5MM ALLEN WRENCH TO LOOSEN THE ALLEN SCREW AND ADJUST THE LIMIT SWITCH UP SO THE ARM WILL TRIGGER THE LIMIT SWITCH EARLIER TO STOP THE ARM FROM CONTINUOUS FIRING
4. IF THE TRAP WILL NOT FIRE AND COINCIDES WITH THE LIMIT SWITCH, THIS MEANS THE ARM IS STOPPING TOO SOON. THE LIMIT SWITCH NEEDS TO BE ADJUSTED DOWN AND THEN RECHECKED TO ENSURE PROPER FIRING
5. A GOOD RULE OF THUMB FOR ARM PLACEMENT WHEN LOADED IS TO MAKE SURE THE CLAY LOADS BETWEEN 1/2 AND 1 INCH FROM THE RUBBER STRIP. IF IT'S FARTHER, THE ARM IS STOPPING TOO SOON.

BREAKING CLAY PIGEONS

1. MAKE SURE THE STACKER TUBE HORSESHOE OPENING IS FACING THE REAR OF THE TRAP. IF IT IS FACING FORWARD, REMOVE THE CLAYS AND TURN IT AROUND SO THE OPENING FACES THE BACK OF TRAP AND THE ARM SHOULD ALWAYS BE IN THE 12 O'CLOCK POSITION WHEN LOADING CLAY PIGEONS.
2. IF TRAP IS "JUMPING" AROUND WHEN THE ARM SWINGS, THIS COULD BREAK CLAYS IN THE STACK OR WHILE LOADING ONTO ARM. THE TRAP SHOULD BE SECURED USING STAKES (NOT INCLUDED) OR BY MOUNTING TO A BOARD OR PIECE OF PLYWOOD FOR STABILITY.
3. SOMETIMES WHEN THE STACK IS DOWN TO A FEW CLAYS, THE MOTION OF THE TRAP CAN THROW THE CLAY PIGEONS AROUND AND THEY BREAK. ONCE YOU GET DOWN TO 2-3 CLAYS LEFT, ADD MORE TO WEIGH DOWN THE STACK AND CONTINUE SHOOTING!
4. CHECK TO SEE WHERE THE BASE OF FEEDER BRUSHES ARE TO THE TOP OF THE CLAY ARM. THE MOUNTING HARDWARE SHOULD NEVER TOUCH THE TOP OF THE BIRD. IF THIS IS HAPPENING, THE ARM OR CHASSIS IS BENT

OTHER

1. IF THE CLAY IS FLYING WITH A WOBBLE, THE THROWING ARM IS BENT AND WILL NEED TO BE BENT BACK OR REPLACED. NEVER CARRY THE TRAP BY THE ARM.

2. IF THE MAIN GEAR AND MOTOR ARE MOVING BUT THE THROWING ARM ISN'T THEN THERE MAY BE AN ISSUE WITH THE CLUTCH ASSEMBLY. PLEASE REFER TO THE CLUTCH TEST INSTRUCTIONS ON THE TROUBLESHOOTING PAGE ON OUR WEBSITE.

3. ALWAYS CHECK THE GREASE ON MAIN GEAR & MOTOR SPROCKET. ADD SILICONE GREASE WHEN NECESSARY TO KEEP GEARS IN PROPER WORKING ORDER

Warranty & Customer Service

Register your product online at www.doalloutdoors.com. Receipt is required for warranty registration. ONE YEAR PARTS WARRANTY.

DO-ALL OUTDOORS LLC
1(866)SHOT-DOC Monday - Friday
8:00 AM to 4:00 PM
customerservice@doalloutdoors.com
Nashville, Tennessee, USA

Find tech tips, instructions, troubleshooting videos,
and more online at doalloutdoors.com



1-866-SHOT-DOC

(1-866-746-8362)

DOALLOUTDOORS.COM

CUSTOMERSERVICE@DOALLOUTDOORS.COM



facebook.com/doalloutdoors



tiktok.com/@doalloutdoors



youtube.com/doalloutdoors



instagram.com/doalloutdoors