



FLYWAY ONE

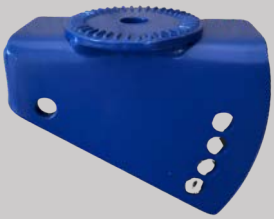
INCLUDED PARTS



Trap Head



Main Spring and Spade Bolt



Angle Mount



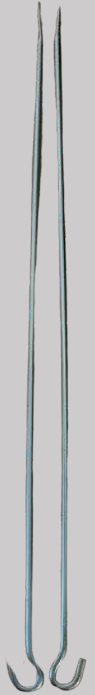
Foot Pedal



Leg Cross Arm



Parallel Leg Frame Base



Safety Ring Arms



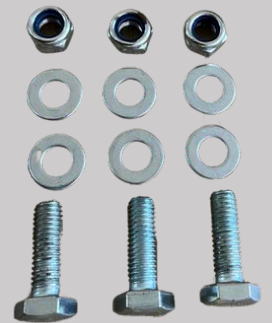
Frame Angle Mount



Bolts, Washers, one Nut and one Hand Knob for Angle Mounts



Long Bolt, Washers and Nut



3 Bolts, 6 Washers and 3 Nuts for Frame Assembly



Safety Ring



Large Bolt and Nut



Safety Ring Studs



Allen Bolts for Safety Ring Arms



Ground Stake

TOOLS NOT INCLUDED



STEP 1



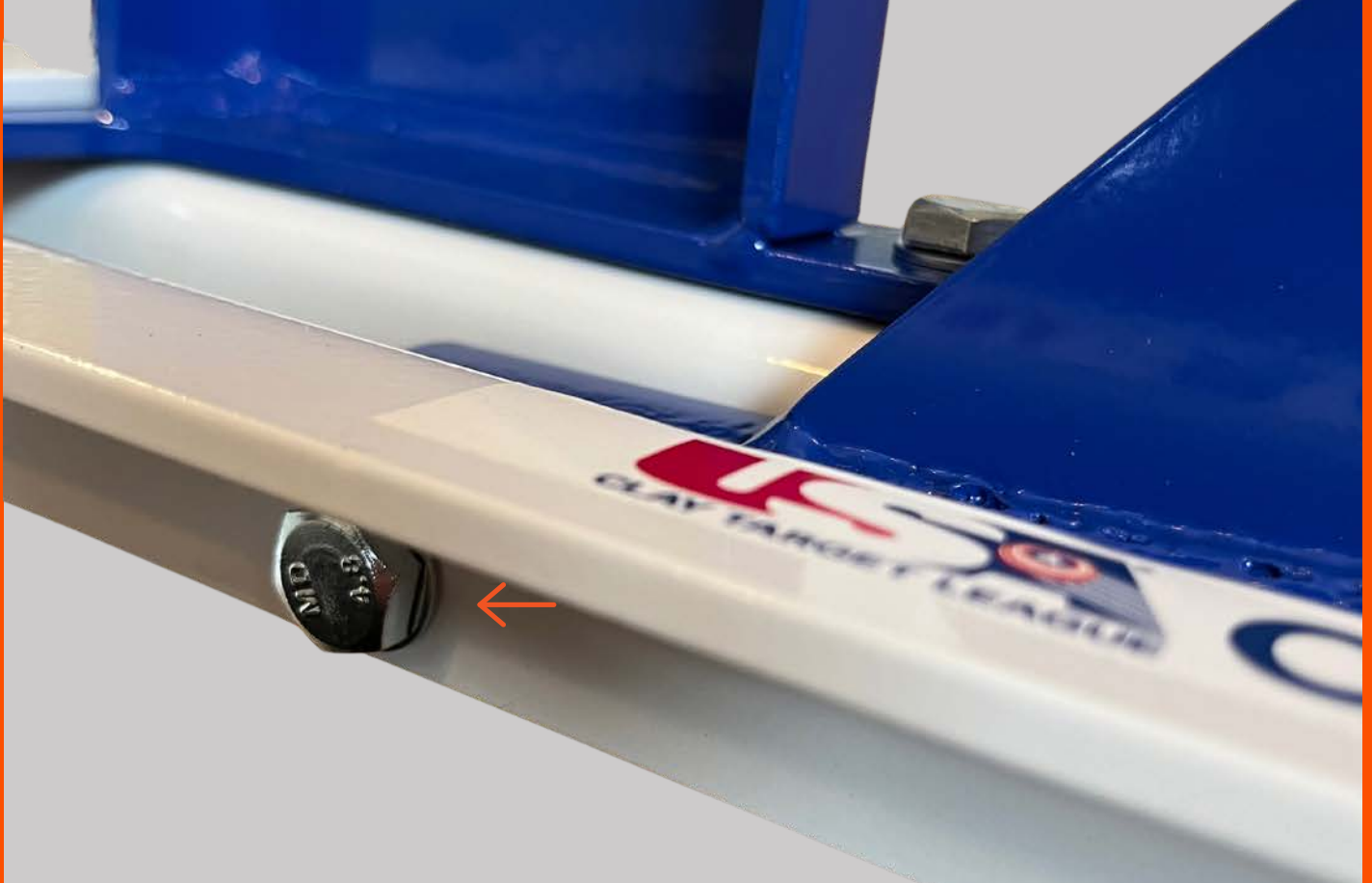
Begin by placing the Frame Angle Mount below the Leg Cross Arm, and the open end of the Parallel Leg Frame Base below the Frame Angle Mount. Then, place one washer on each bolt, then slide through all 3 parts above, secure on the bottom with another washer, followed by a nut.



STEP 2



Attach the Angle Mount to the Base Angle Mount using the 2 short bolts, with washers, one nut and one hand knob. The Hand Knob goes in the back for easy height adjustment.



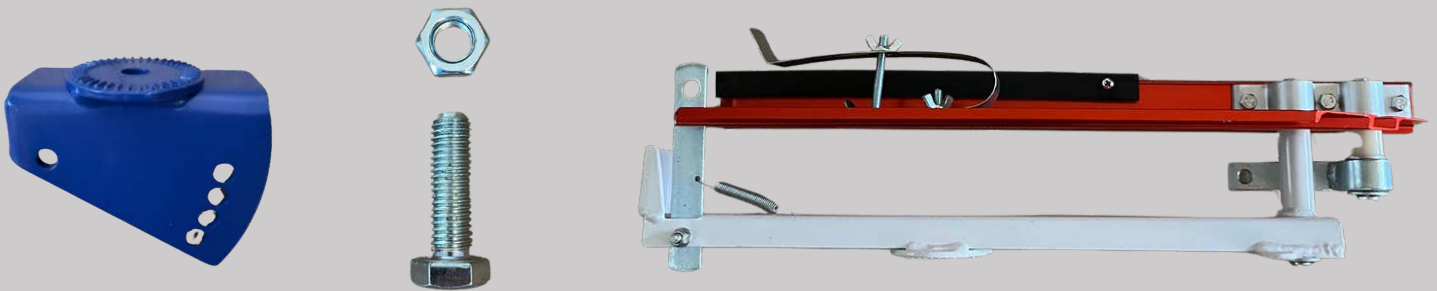
STEP 3



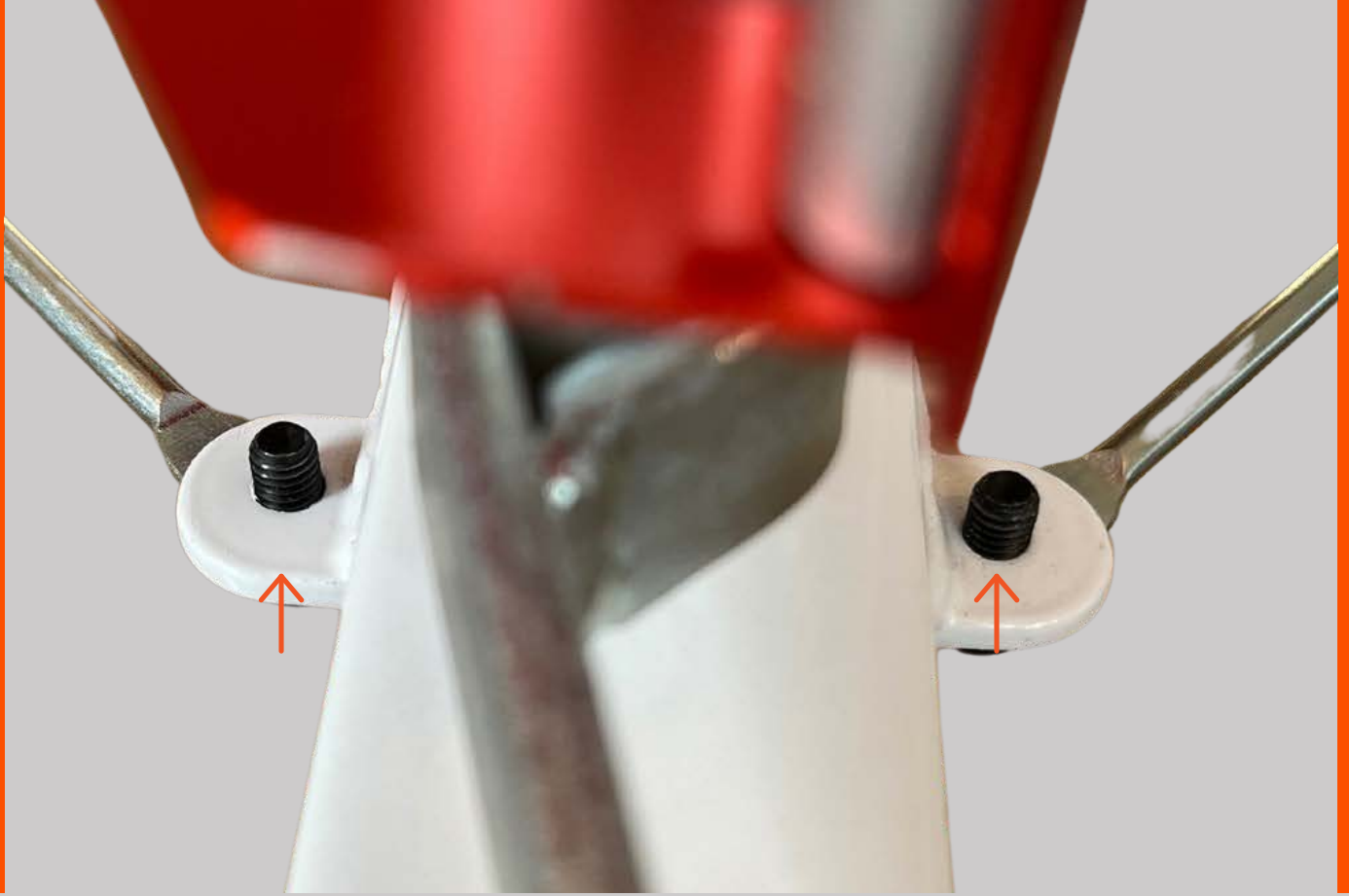
Attach the Foot Pedal to the Parallel Leg Frame Base by using the Long Bolt, Washers, and Nut. Attach one Washer to the Bolt, then push the Bolt through the front hole in the Frame, through the hole in the Front of the Foot Pedal, then through the other side of the Frame. Secure with the other Washer and the Nut on the outside of the opposite side of the Frame.



STEP 4



Attach the Trap Head to the Angle Mount using the Large Bolt and Nut.



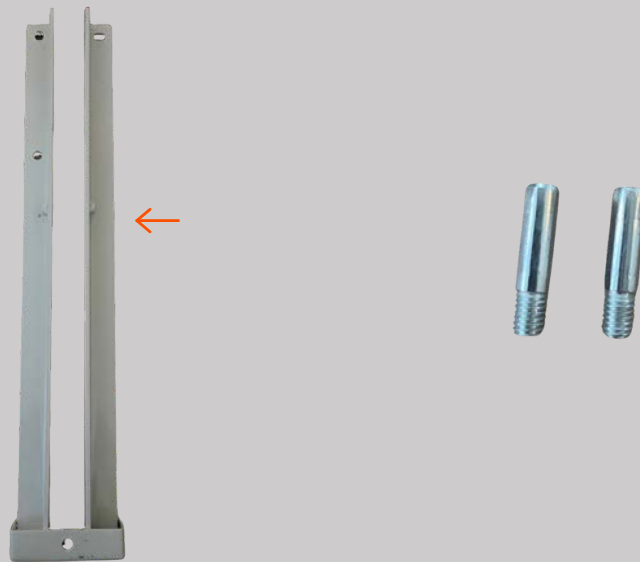
STEP 5



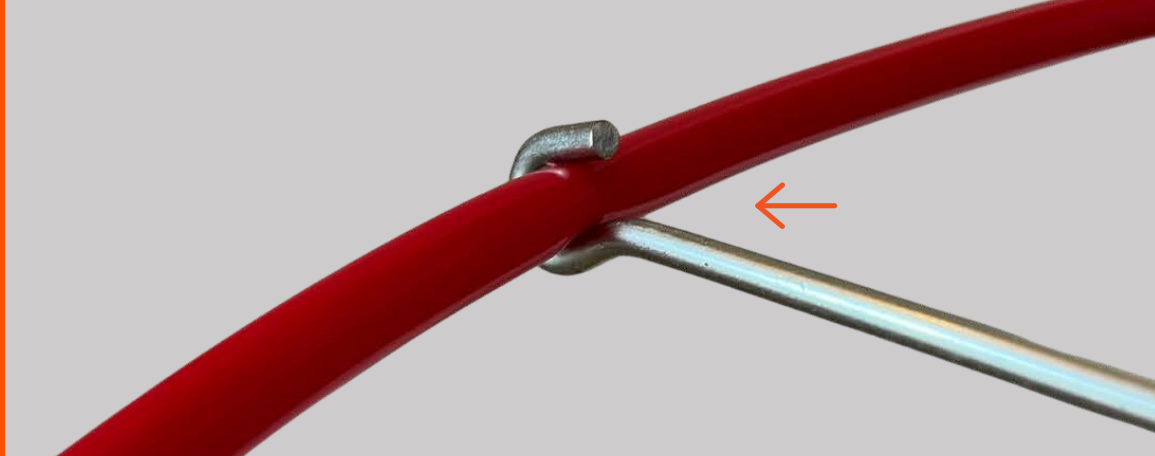
Mount the Safety Ring Arms onto the threaded front tabs located on the Trap Head using the provided Allen Bolts



STEP 6



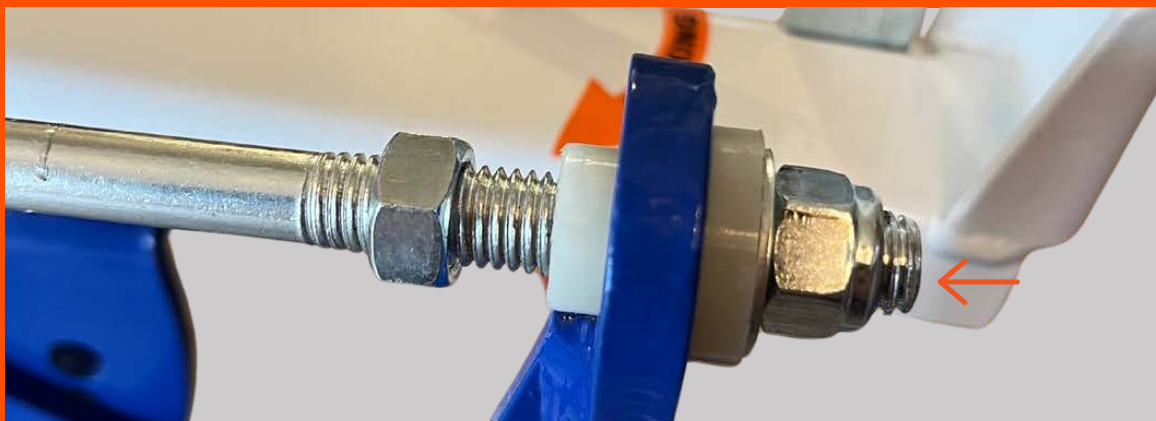
Mount the Safety Ring Studs to the Parallel Leg Frame Base, threading from the outside in on each side of the Base.



STEP 7



Slide the Safety Ring through the Safety Ring Arms and feed through them to loop around the Trap Head and secure by sliding each end of the Safety Ring onto the Safety Ring Studs.



STEP 8



Hook the end of the Main Spring onto the Eyelet on the Trap Head indicated above.

Then, remove the plastic grommet, washer and nut from the Spade Bolt. Slide the Spade Bolt through the hole in the Foot pedal as indicated above. Then, resecure the Grommet, Washer, and tighten nut until 3-4 threads are exposed. This can be adjusted later but is a starting point for spring tension.



STEP 9



Set the Clip on the end of the Foot Pedal's Chain to desired length. Then attach clip to the top of the Trigger on the Trap Head.



THANK YOU

ONCE THE MAIN SPRING IS INSTALLED, THE TRAP IS NOW LIVE AND CAN GO OFF IF LEFT IN THE COCKED POSITION. PLEASE USE EXTREME CAUTION AND ALWAYS REMOVE SPRING WHEN TRANSPORTING, ADJUSTING, OR STORING THE TRAP.

OPERATION

1. Position trap in desired location suitable for shooting trap.

ALWAYS MAKE SURE YOU POINT THE TRAP IN A SAFE DIRECTION AWAY FROM BYSTANDERS, TREES, OR ANIMALS WITH AT LEAST A 400 METER OPEN FIELD/SHOT FALL ZONE.

2. Once trap has been inspected to ensure it's in good working order, place ground stake through the hole in the rear of the trap. This will help hold the trap in place.

3. Elevation can be adjusted by using the plastic hand crank on the Angle Mount & direction can be adjusted by loosening the Large Nut below the Pivot mount.

When desired elevation and direction is achieved, hand tighten both the nut and hand crank.

NEVER ADJUST THE TRAP WHILE IT IS COCKED!

4. With the throwing arm in the 12 o'clock position, place a clay pigeon under the clay pigeon clamp and rotate clockwise until it reaches the 6 o'clock position and locks into the trigger. **BE SURE TO TEST THROW PRIOR TO CONTINUOUS USE TO ENSURE TRAP IS IN GOOD WORKING ORDER.**

5. With the shooter positioned to the left of the trap, press the foot pedal to release the arm to throw the clay.

TROUBLESHOOTING

1. Clay pigeons only throwing a short distance -

Make sure the Trap is firmly secured and won't move or bounce. Tighten the nut on the spring which will increase arm swing speed.

2. Clay pigeons breaking during use -

Clay pigeon clamp is too close to the trigger. Un-cock the machine and loosen the wing nut and slide the clamp forward on the arm. Re-tighten wing nut.

Warranty & Customer Service
Register your product online at
www.doalldoors.com. Receipt is required for
warranty registration.
ONE YEAR PARTS WARRANTY.

customerservice@doalldoors.com
1(866)SHOT-DOC
Monday - Friday 8:00 AM to 4:00 PM
DO-ALL OUTDOORS LLC - Nashville, Tennessee, USA
Find tech tips, instructions, troubleshooting videos,
and more online!



1-866-SHOT-DOC

(1-866-746-8362)

DOALLOUTDOORS.COM

CUSTOMERSERVICE@DOALLOUTDOORS.COM



facebook.com/doalloutdoors



tiktok.com/@doalloutdoors



youtube.com/doalloutdoors



instagram.com/doalloutdoors