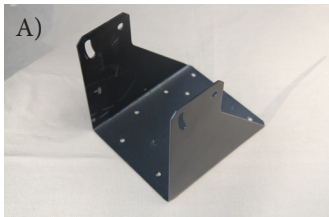


The Raven Auto Trap Assembly Instructions:



Carefully Remove Trap From Box.



A)



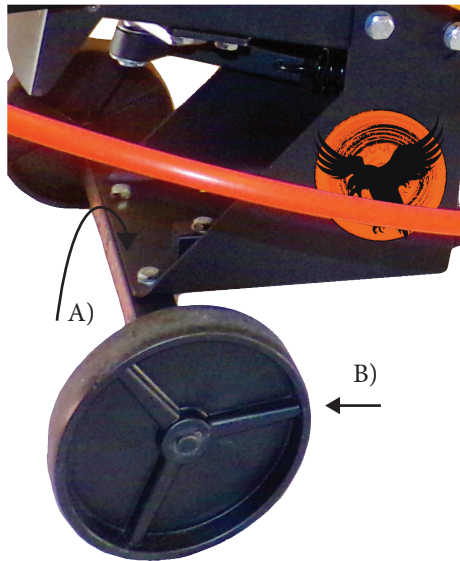
B)

A) Bolt Axle Onto Base.
B) Install Wheels On Axle. Insert Washer, Wheel, And Clamps Onto Axle.



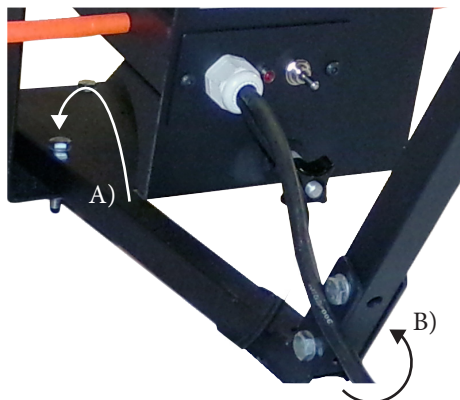
A) Bolt On First Section On Pull Handle Underneath The Base.

B) Bolt On Handle Section Of Pull Handle.



A)

B)



A)

B)

OPERATION:

- Make Sure Toggle Switch Is Set To Off
- Insert Safety Pin
- Load Clay Pigeons Into Stacking Poles
- Connect The Foot Pedal
- Before Connecting To Battery, Read All Safety Guidelines
- Connect Electrical Clamps To 12V Deep Cycle Marine Battery
- Turn Operating Switch To "On". The Trap Will Cock At This Time. The Trap Is Now Live And Ready For Operation And Extreme Caution Must Be Used
- Remove Safety Pin Before Firing
- Depress Foot Pedal To Throw Clay
- **While Not In Use**, Always "Release" The Trap By Flipping The Release Switch. The Release Feature Will Fire The Arm And A Live Bird If Loaded. The Arm Should Now Be In The Eight O'clock Relaxed Position. Never Let The Trap Sit Unattended While Cocked.
- Insert Safety Pin And Remove Clamps From Battery

WARNING: PLEASE READ BEFORE USE

SAFETY WARNINGS:

- If The Main Spring Is Attached, The Unit Is Considered Armed And Extreme Caution Must Be Used.
- Stand Only Behind Unit. Not To Either Side.
- To "Release" The Unit For When The Unit Is Not In Use, Flip The Release Button. The Release Switch Will Fire The Arm And The Arm Will Then Set The Arm To The Eight O'clock "Released" Position.
- Always Have The Safety Pin Inserted When Not In Use. Failure To Insert Safety Pin Could Result In Bodily Injury.
- Before Unit Is Used, Install The Orange Safety Ring. The Safety Ring Is A Visual Indicator Only For The Path Of The Throwing Arm. Do Not Penetrate This Area When Unit Is Armed.
- Never Attempt To Work On Or Alter The Unit When Main Spring Is Attached, Unit Is In The Cocked Position, Or Unit Is Connected To Battery.
- Always Disconnect Unit From Battery When Not In Use.
- Never Place Any Part Of Body Near The Throwing Arm Or Inside The Safety Ring When The Unit Is Cocked Or Connected To The Battery.
- Never Let The Trap Sit Unattended While Cocked.
- Once The Knob For The Main Spring Bolt Is Installed, Never Back It All The Way Off Of The Bolt. The Spring Is Under Constant Pressure.

If Unit Is Not Operating Properly, Please Contact
1-866-SHOTDOC For Assistance

DO-ALL TRAPS, LLC DBA DO ALL OUTDOORS, LLC
DOES NOT ACCEPT ANY RESPONSIBILITY FOR DAMAGES AND/OR INJURY SUSTAINED FROM THE USE OR MISUSE OF THIS PRODUCT.

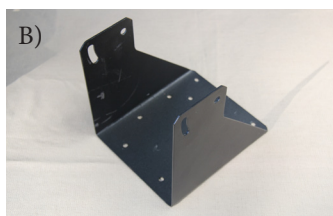
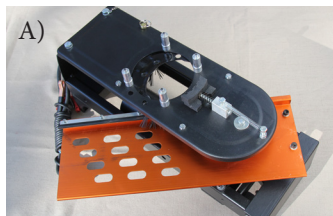
Customer Service:

1-866-SHOT-DOC

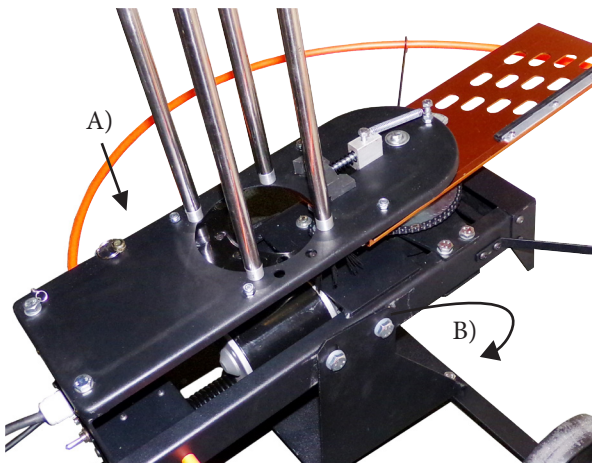
Email:

customerservice@doalloutdoors.com



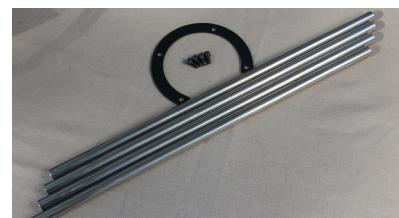
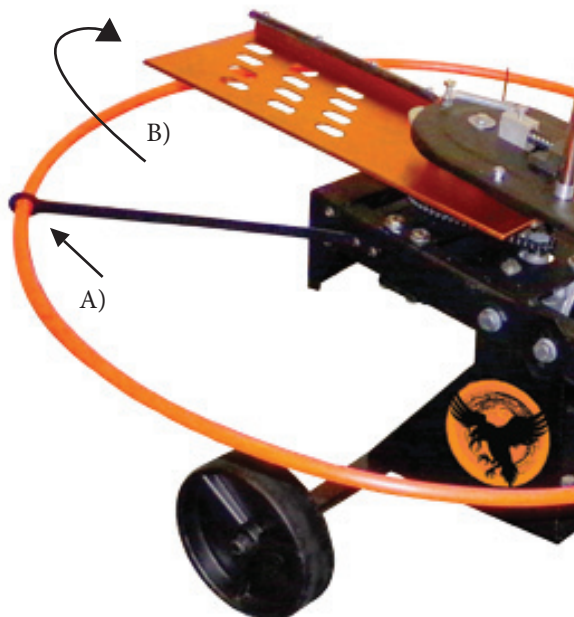


Carefully Mount Trap Body To Base.



A) Install Safety Ring Hardware At The Front And Back Of Trap. Install Safety Ring.

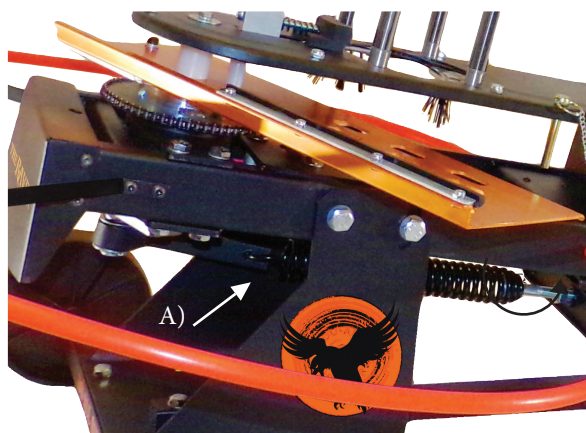
B) Move Throwing Arm To The Twelve O' Clock Position.



Install Stacker Poles. Install Horseshoe Ring Onto Stacker Poles, Open Side Facing The Back Of The Trap. Install All Four Safety Ring Holders. 2 Front And 2 Back.



A) Insert Front Hook Of Spring Into Eyelet.
B) Push The Main Spring Bolt Through The Hole Located At The Back Of The Trap.



Install Collar And Tension Knob Onto Main Spring Bolt. Turn Knob Until Sufficient Tension Is Present. Do Not Over-Tighten.