

# DOVALL

OUTDOORS



FLYWAY 80

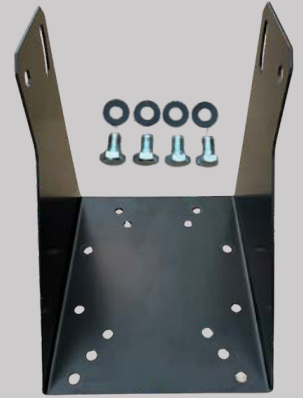
# INCLUDED PARTS



Cart Assembly



Cart and Axle Assembly  
Hardware: Total of (7) Bolts,  
(14) Washers, and (7) Nuts.



Trap Head Base with (4)  
M10X15 Bolts and (4) plastic  
washers to connect Trap  
Head to Base



Trap Head



Cart Axle & (4) Washers, (2)  
Spacers, and (2) "C" Clips



(2) Safety Ring Arms and (4)  
M6X7 Allen Screws



Main Spring and  
Spade Bolt



Stacker Poles



Wheels



Wobbler Adapter Plate



Safety  
Ring



Foot Pedal



Wireless Remote



(2) Horseshoes and  
(4) 5mm Allen Screws



(2) M8X10 Studs

**TOOLS NOT INCLUDED**



## STEP 1



Begin by flipping the Trap Head upside down. First, thread in the studs for the safety ring, which thread, by hand, from the outside in on each side of the rear of the trap, as shown above.



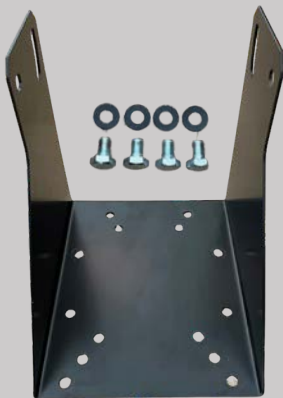
## STEP 2



While the trap is still upside down, install the Front Leg Brackets and Safety Ring Arms (pointing forward, in the direction that the arm will throw the clays) using the (4) provided allen head screws. Secure the bolts with a 4mm allen wrench.



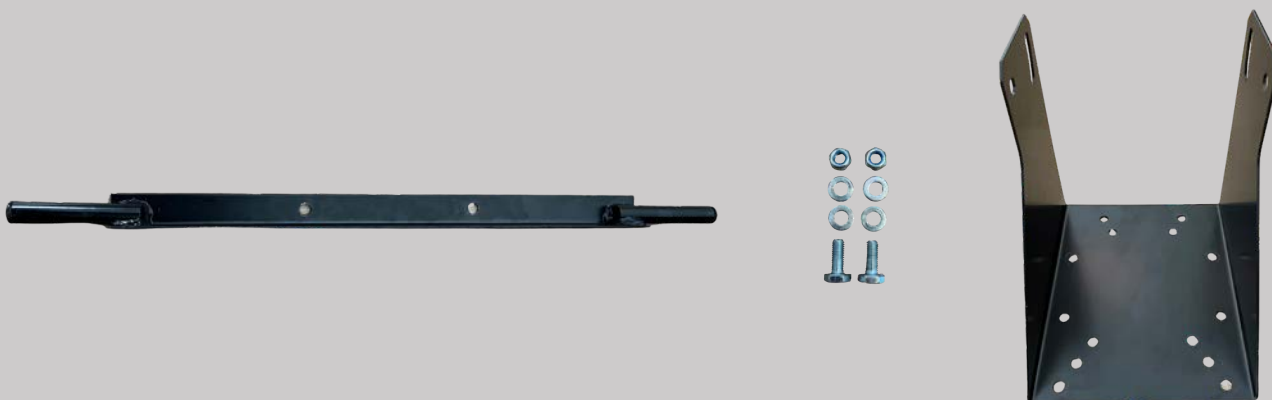
## STEP 3



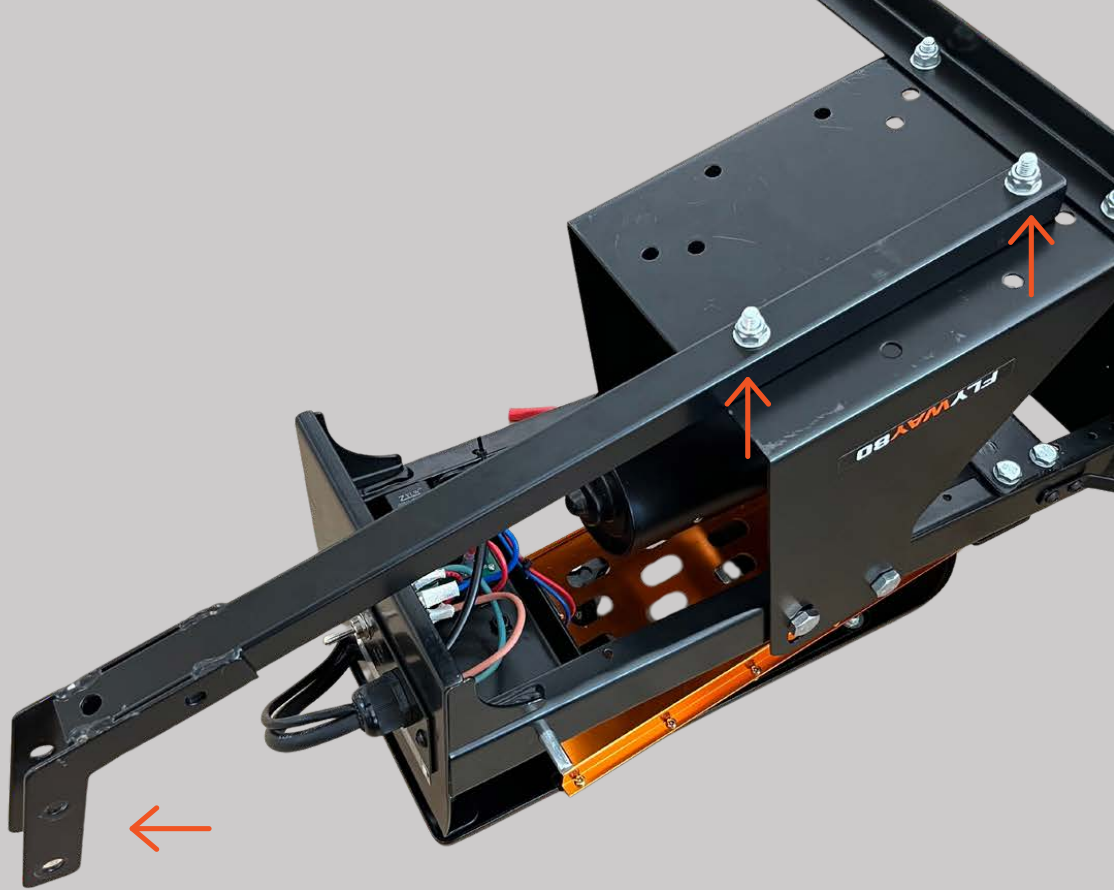
While the trap is still upside down, attach the Trap Head to the Trap Head Base using the (4) M10X15MM bolts and (4) plastic washers. (In order: Bolt, trap base, washer, trap head)



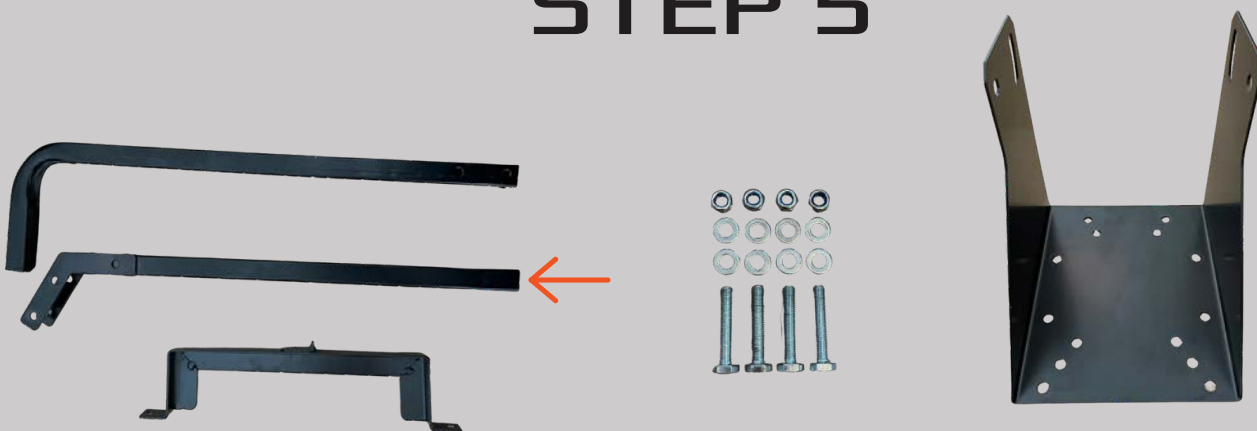
## STEP 4



While the trap is still upside down, install the Cart Axle using the (2) short Axle Assembly bolts with (4) washers and (2) nuts. Slide one washer on the bolt, then push the bolt through the trap base and the Axle, as shown above. Secure with another washer, followed by a nut.



## STEP 5



Using (2) of the long Cart Assembly Bolts, along with (4) washers and (2) Nuts, fasten the Lower Arm of Cart Assembly to the Trap Base. Slide one washer on the bolt, then push the bolt through the trap base and the Cart Arm, as shown above. Secure with another washer, followed by a nut. Note that the angled end of the Cart Arm is pointed towards the ground while the Trap is upside down.



## STEP 6



With the throwing arm facing 12 o'clock (straight forward), hook the spring to the eyelet underneath the front of the trap head. With the tension knob, washer and plastic grommet removed from the spade bolt, push the threaded end of the bolt inside the spring through the hole in the bottom of the rear of the trap head. Push the plastic grommet, followed by the washer, into the hole to support the bolt and tighten the knob until it is snug with the trap and there is no play in the spring. NOTE: Do not adjust interior nut on Spade Bolt, indicated above. This nut indicates the maximum point to which you can tighten the Spade Bolt.



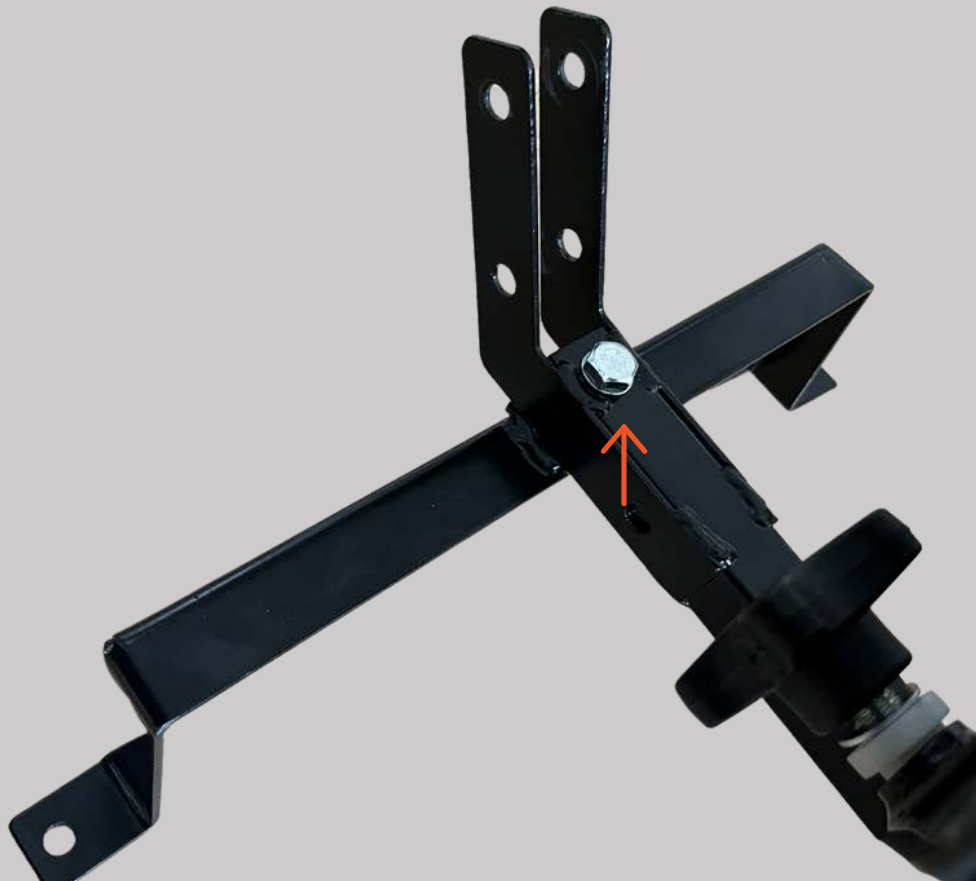


## STEP 7

⊂ ○ ○ ○ ○ ○ ○ ○ ⊃



Next, install the wheels onto the Axle in the following order: Washer, Spacer, Wheel, Washer, then lock them into place with the "C" style Clip.



## STEP 8



This step is optional (for varied angles). With the trap to the flipped upright position, using (1) of the long Cart Assembly Bolts, (2) Washers, an (1) Nut, attach the Rear Cart Stand to the Lower Cart Arm.



## STEP 9



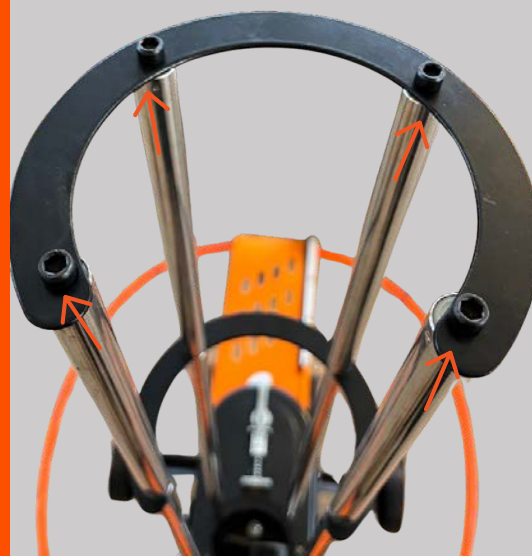
Using the last (2) Cart Assembly Bolts, (4) Washers, and (2) Nuts, secure the Upper Cart Arm to the Lower Cart Arm. Slide one washer on each bolt, slide the bolts through both of the cart arms, then slide a washer on the bolts and secure with a nut.



## STEP 10



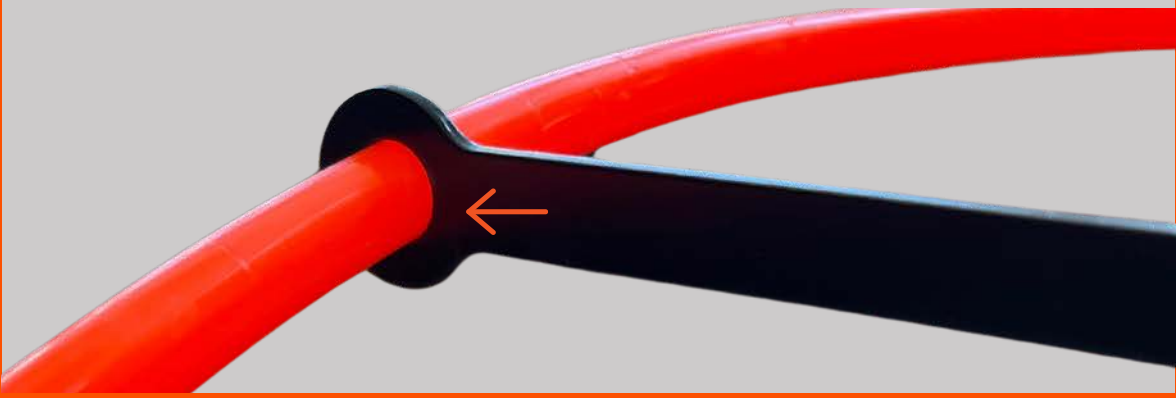
Remove the (4) rubber caps on top of the Trap Head, then slide each of the 4 longer Stacker Poles onto the now exposed mounts.



## STEP 11



Place the first horseshoe with the opening facing the rear of the trap on top of the long stacker poles. Thread the shorter poles through the horseshoe into the long poles and tighten. Place the last horseshoe facing the rear of the trap on top of the tube setup and thread the 5mm allen screws through the horseshoe into the poles and tighten.



## STEP 12



Slide the Safety Ring through the Safety Ring arms and connect to each of the M8X10 Studs towards the rear of the Trap.



# THANK YOU

ONCE THE MAIN SPRING IS INSTALLED, THE TRAP IS NOW LIVE AND CAN GO OFF IF LEFT IN THE COCKED POSITION. PLEASE USE EXTREME CAUTION AND ALWAYS REMOVE SPRING WHEN TRANSPORTING, ADJUSTING, OR STORING THE TRAP.

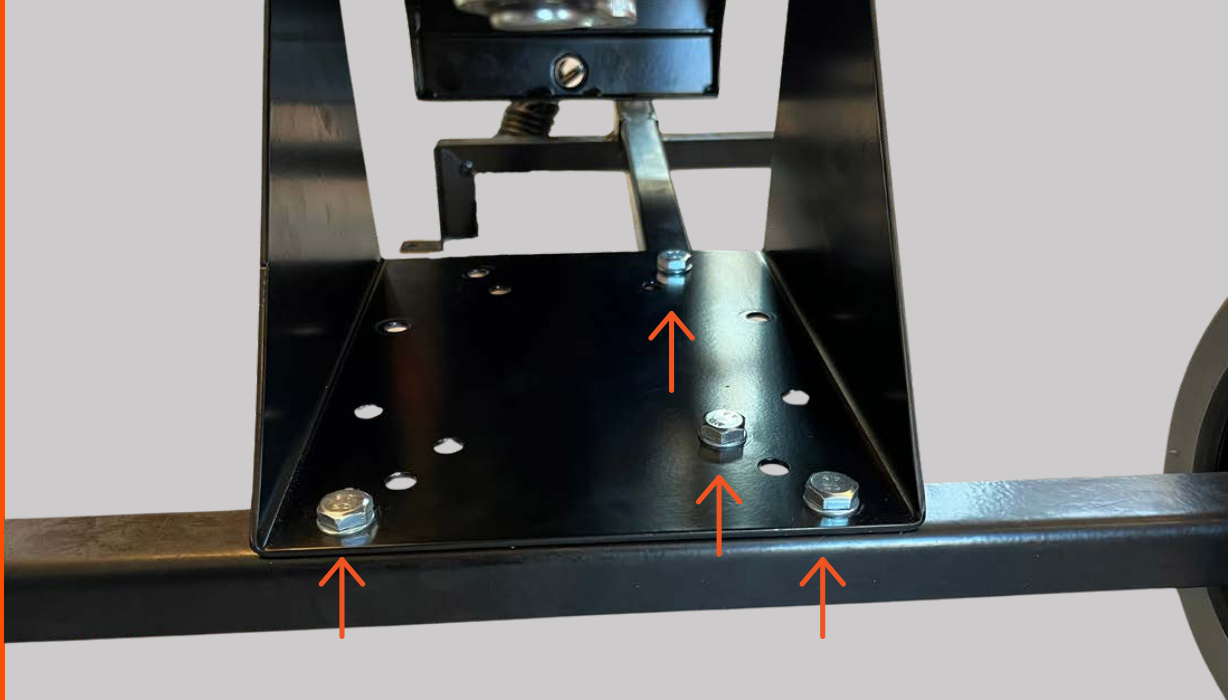


**FLYWAY 80**

**+**

**AWK45**



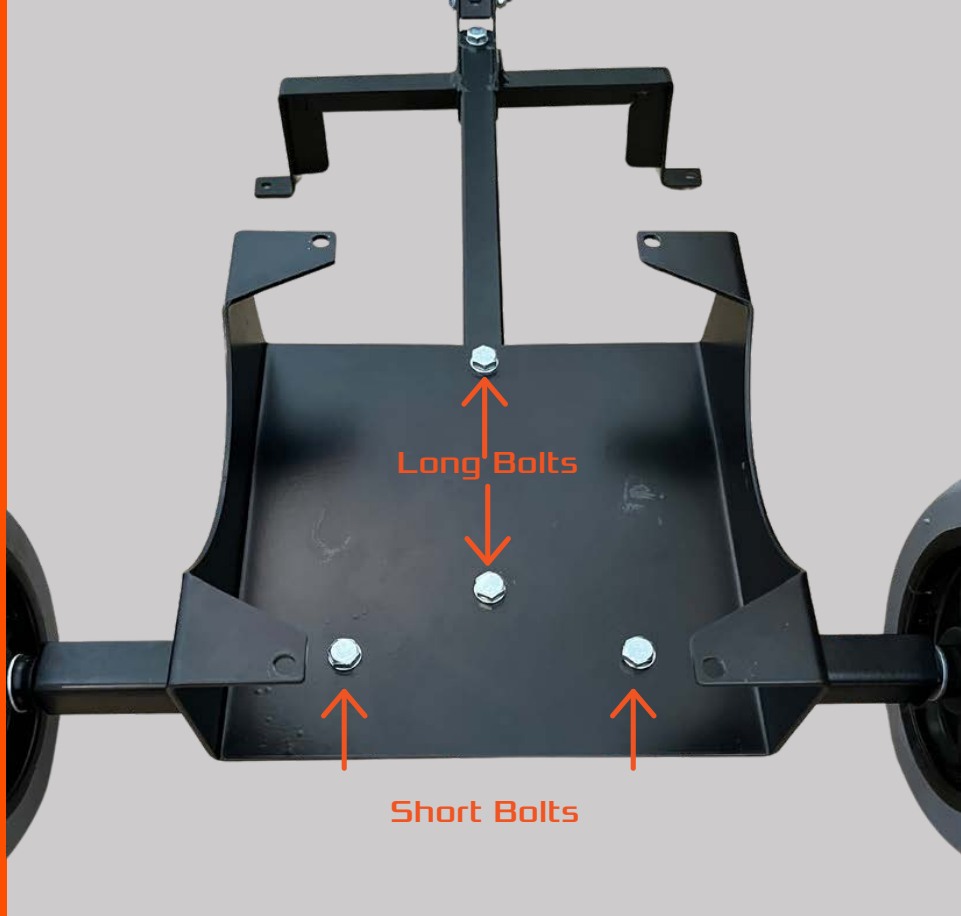


## STEP 1

Cart Assembly



Remove the 4 bolts, along with washers and nuts, that connect the Trap Base to the Axle and Cart Assembly.



## STEP 2

Cart Assembly

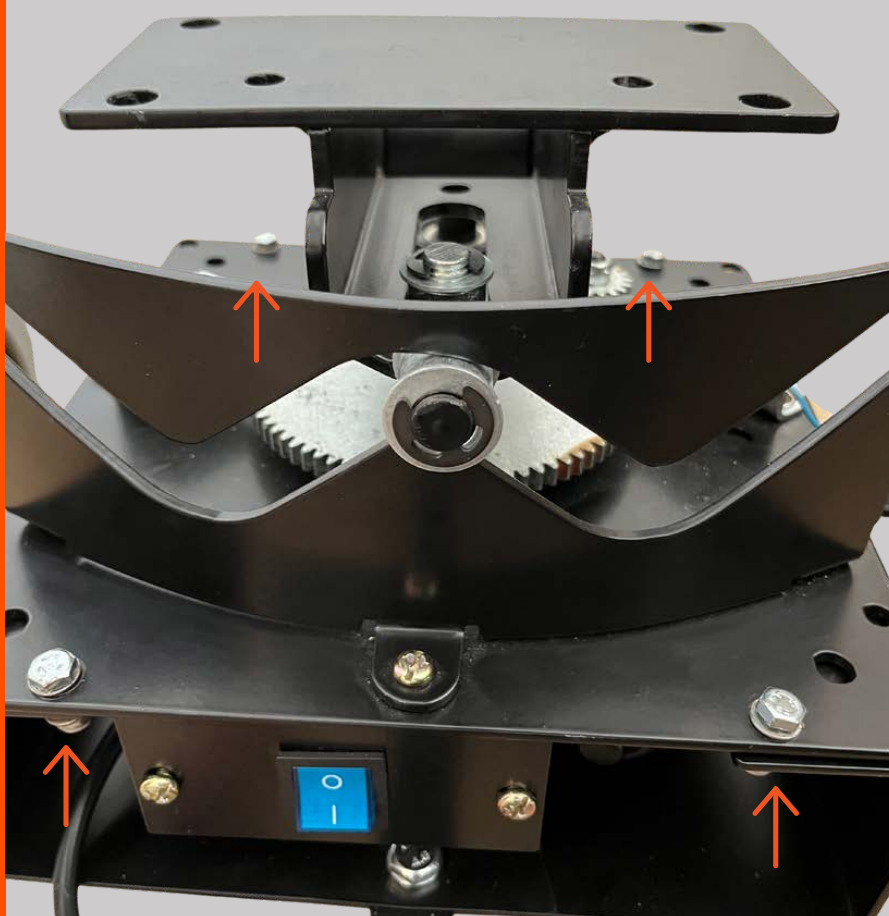


Wobbler Adapter Plate

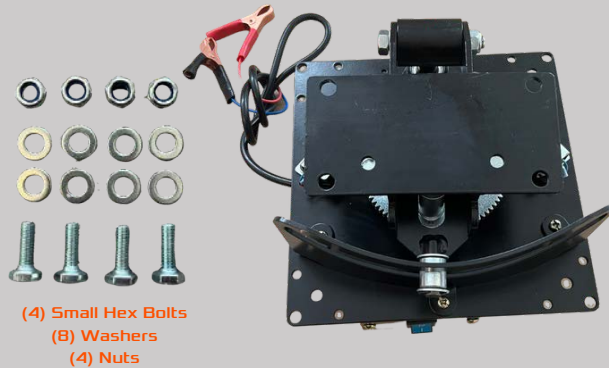
Cart Axle



Using the same 4 bolts, along with washers and nuts, attach the Wobbler Adapter Plate to the Cart Axle and Assembly.

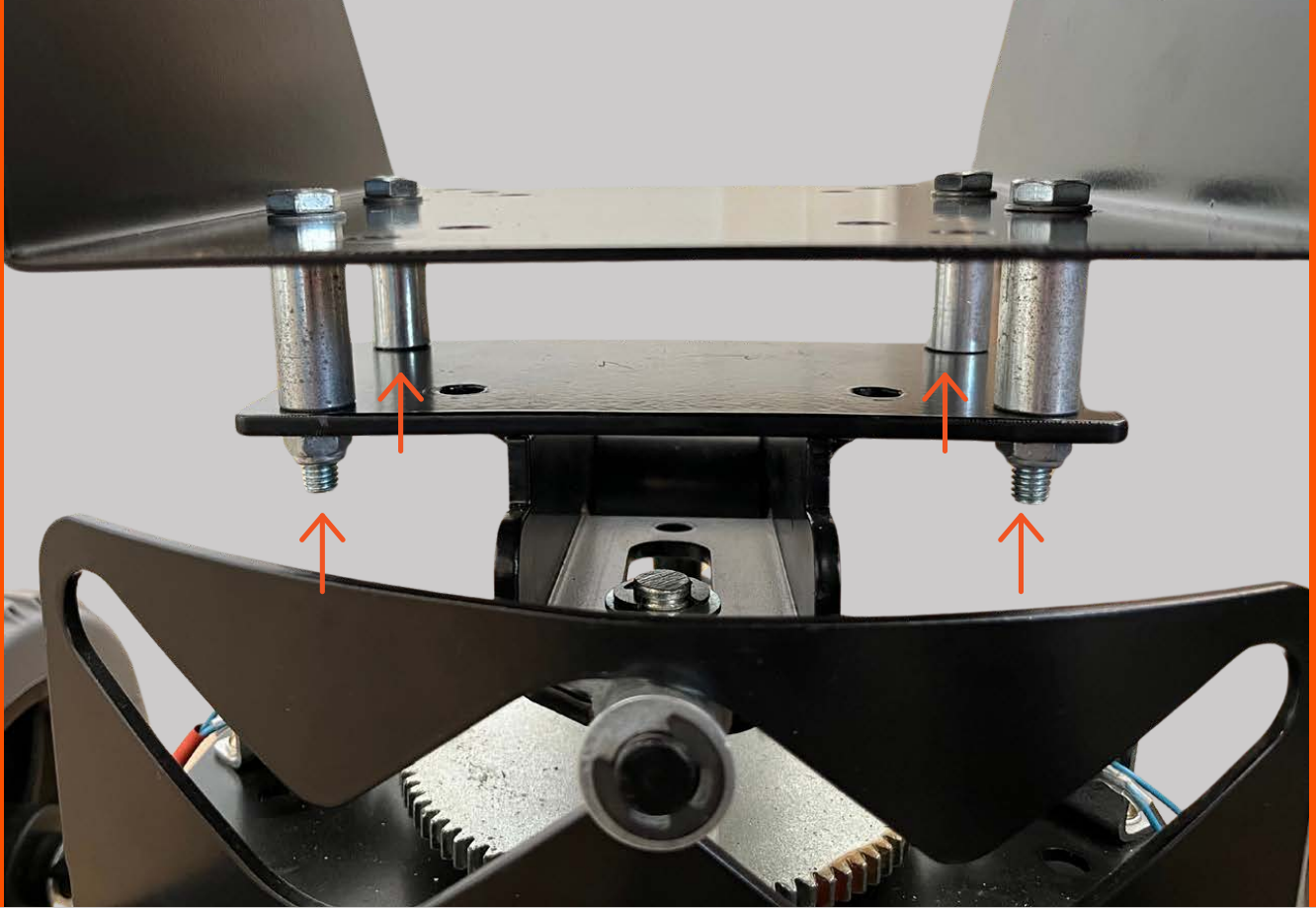


## STEP 3

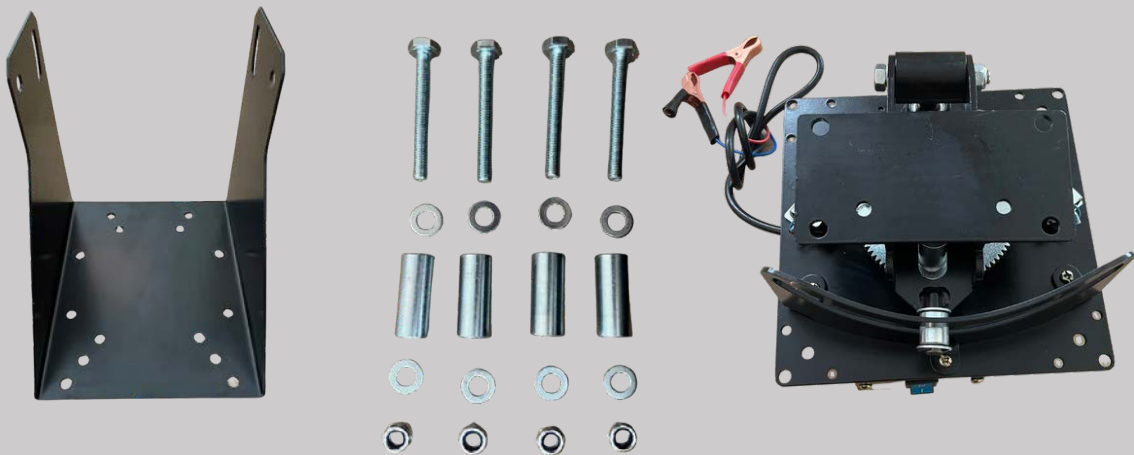


For installing Wobbler to  
Wobbler Adapter Plate

Using the (4) small 10MM Hex Bolts, along with washers and nuts, attach the Wobbler to the Wobbler Adapter Plate.



## STEP 3



With the power switch facing the Cart Handle, attach the Trap Head Base to the Wobbler using the supplied bolts, washers, spacers, and nuts.

(In order: Bolt, washer, trap head, spacer, Wobbler, washer, nut.)

Be sure that the spacers are set between the top of the Wobbler and the Trap Base, and that both of the power switches are facing the rear/handle of the Cart.



**THANK YOU**

ONCE THE MAIN SPRING IS INSTALLED, THE TRAP IS NOW LIVE AND CAN GO OFF IF LEFT IN THE COCKED POSITION. PLEASE USE EXTREME CAUTION AND ALWAYS REMOVE SPRING WHEN TRANSPORTING, ADJUSTING, OR STORING THE TRAP.

# Operation

1. Make sure deep cycle battery (not included) is fully charged. Before clamping wobbler and trap alligator clips to battery, make sure the toggle switch on the trap is set to off. **\*\*NEVER CARRY TRAP BY THROWING ARM - THIS CAN BEND AND AFFECT PERFORMANCE!**
2. Connect foot pedal to the corded 3 prong plug coming out of the trap. **\*\*NEVER PLUG THIS INTO A WALL.**
3. Connect red alligator clips to the positive battery post and the black alligator clips to the negative battery post.
4. Flip the toggle switch on the trap up to "disarm." Once arm moves to 12 o'clock position, turn the machine back off and load **STANDARD SIZE CLAYS ONLY** into the stacker tube assembly. Once the trap is loaded, you can flip the toggle switch down to "on." The arm will rotate counter-clockwise and automatically load a clay onto the throwing arm. **THE TRAP IS NOW COCKED. PLEASE USE EXTREME CAUTION.**
5. To turn the wobbler on, flip the switch to on. The wobbler will begin moving the trap head side to side until it is manually turned off.
6. **ALWAYS** set trap up pointing away from bystanders, trees, and animals with a recommended 400 meter open field/shot fall zone. Always look over the trap for damage and test throw a few clay pigeons before use to make sure the trap is operating properly. **NEVER ADJUST TRAP WHEN COCKED AND IN FIRING POSITION!!!**
7. With the shooter/bystanders standing to the left or behind the trap, press the foot pedal to throw the clay!
8. When you are done shooting, switch the toggle switch to disarm, hold the foot pedal down until the throwing arm reaches 12 o'clock, and turn the toggle switch to off. The trap is now safe to unload/move.

## Changing the Wobbler Directional Plates



Figure 1

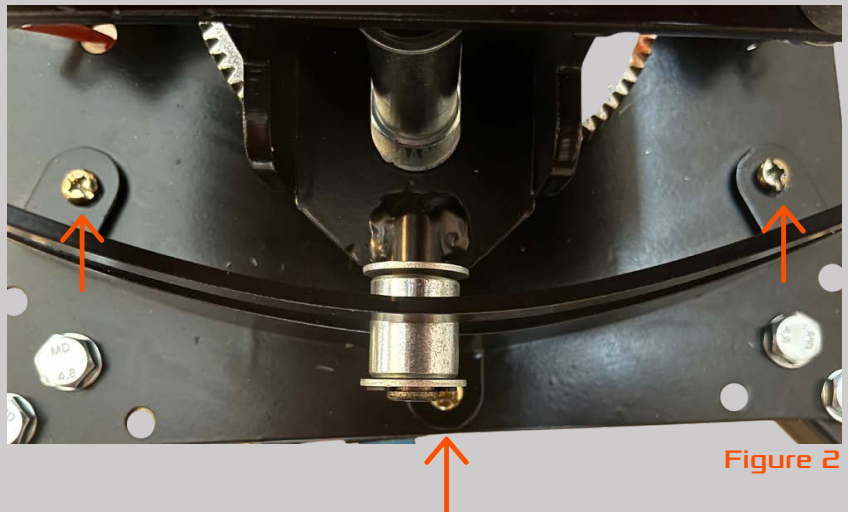


Figure 2

To change directional plates, completely disarm trap and remove alligator clamps from the battery. Remove the roller clip found at the rear of the Wobbler (See figure 1 above) with a snap ring or needle nose pliers, slide washer off, and unscrew the three phillips head screws (indicated by arrows in figure 2 above). Remove the plate. To install, slide the roller through the directional plate guide hole. Slide the washer over the roller and snap clip back on. Thread in the three phillips screws and tighten.

# Troubleshooting

**\*\*\*ALWAYS REMOVE MAIN SPRING PRIOR TO TROUBLESHOOTING\*\*\***

## MACHINE NOT TURNING ON

1. CHECK BATTERY CONNECTION. THE MACHINE DRAWS 16 AMPS TO WORK PROPERLY. WE RECOMMEND A DEEP CYCLE BATTERY WITH A MINIMUM OF 675 COLD CRANKING AMPS.
2. CHECK THE 15A AUTOMOTIVE BLADE FUSE IN THE REAR OF THE TRAP HEAD. REMOVE THE COVER AND PULL THE FUSE OUT TO INSPECT. REPLACE AS NEEDED.
3. CHECK RELAY. PLEASE EMAIL OR CALL CUSTOMER SERVICE IF ISSUES CONTINUE.

## AUTO FIRING/NOT FIRING

1. IF THE TRAP CONTINUES TO FIRE, UNPLUG THE FOOT PEDAL. IF IT STOPS, THE SCREWS ON THE FOOT PEDAL NEED TO BE LOOSENED TO DEPRESS THE PEDAL DURING OPERATION.
2. IF FOOT PEDAL ISSUES CONTINUE, PLEASE SEE OUR TROUBLESHOOTING PAGE ON OUR WEBSITE FOR TESTING YOUR FOOT PEDAL.
3. ONCE YOU HAVE ESTABLISHED YOUR FOOT PEDAL IS NOT THE ISSUE, MOVE ON TO THE LIMIT SWITCH. IF YOUR TRAP CONTINUES TO AUTO FIRE, USE A 2.5MM ALLEN WRENCH TO LOOSEN THE ALLEN SCREW AND ADJUST THE LIMIT SWITCH UP SO THE ARM WILL TRIGGER THE LIMIT SWITCH EARLIER TO STOP THE ARM FROM CONTINUOUS FIRING
4. IF THE TRAP WILL NOT FIRE AND COINCIDES WITH THE LIMIT SWITCH, THIS MEANS THE ARM IS STOPPING TOO SOON. THE LIMIT SWITCH NEEDS TO BE ADJUSTED DOWN AND THEN RECHECKED TO ENSURE PROPER FIRING
5. A GOOD RULE OF THUMB FOR ARM PLACEMENT WHEN LOADED IS TO MAKE SURE THE CLAY LOADS BETWEEN 1/2 AND 1 INCH FROM THE RUBBER STRIP. IF IT'S FARTHER, THE ARM IS STOPPING TOO SOON.

## BREAKING CLAY PIGEONS

1. MAKE SURE THE STACKER TUBE HORSESHOE OPENING IS FACING THE REAR OF THE TRAP. IF IT IS FACING FORWARD, REMOVE THE CLAYS AND TURN IT AROUND SO THE OPENING FACES THE BACK OF TRAP AND THE ARM SHOULD ALWAYS BE IN THE 12 O'CLOCK POSITION WHEN LOADING CLAY PIGEONS.
2. IF TRAP IS "JUMPING" AROUND WHEN THE ARM SWINGS, THIS COULD BREAK CLAYS IN THE STACK OR WHILE LOADING ONTO ARM. THE TRAP SHOULD BE SECURED USING STAKES (NOT INCLUDED) OR BY MOUNTING TO A BOARD OR PIECE OF PLYWOOD FOR STABILITY.
3. SOMETIMES WHEN THE STACK IS DOWN TO A FEW CLAYS, THE MOTION OF THE TRAP CAN THROW THE CLAY PIGEONS AROUND AND THEY BREAK. ONCE YOU GET DOWN TO 2-3 CLAYS LEFT, ADD MORE TO WEIGH DOWN THE STACK AND CONTINUE SHOOTING!
4. CHECK TO SEE WHERE THE BASE OF FEEDER BRUSHES ARE TO THE TOP OF THE CLAY ARM. THE MOUNTING HARDWARE SHOULD NEVER TOUCH THE TOP OF THE BIRD. IF THIS IS HAPPENING, THE ARM OR CHASSIS IS BENT



## OTHER

1. IF THE CLAY IS FLYING WITH A WOBBLE, THE THROWING ARM IS BENT AND WILL NEED TO BE BENT BACK OR REPLACED. NEVER CARRY THE TRAP BY THE ARM.
2. IF THE MAIN GEAR AND MOTOR ARE MOVING BUT THE THROWING ARM ISN'T THEN THERE MAY BE AN ISSUE WITH THE CLUTCH ASSEMBLY. PLEASE REFER TO THE CLUTCH TEST INSTRUCTIONS ON THE TROUBLESHOOTING PAGE ON OUR WEBSITE.
3. MAKE SURE TO NEVER TIGHTEN THE SPRING PAST THE STOP NUT PERMANENTLY MOUNTED ON THE MAIN SPRING BOLT. THE OUTSIDE NUT, HOWEVER CAN BE SLIGHTLY LOOSENED FOR ADJUSTMENT IN THROWING DISTANCE.
4. ALWAYS CHECK THE GREASE ON MAIN GEAR & MOTOR SPROCKET. ADD SILICONE GREASE WHEN NECESSARY TO KEEP GEARS IN PROPER WORKING ORDER
5. IF WOBBLER DOES NOT TURN ON, CHECK TERMINAL CONNECTIONS AT BATTERY. IF BATTERY IS LOW AND DOES NOT HAVE ENOUGH CHARGE, THE WOBBLER WILL NOT TURN ON. UNPLUG THE ALLIGATOR CLAMPS FROM THE BATTERY AND RECHARGE TO FULL CHARGE.

## Warranty & Customer Service

Register your product online at [www.doalloutdoors.com](http://www.doalloutdoors.com). Receipt is required for warranty registration. ONE YEAR PARTS WARRANTY.

DO-ALL OUTDOORS LLC  
1(866)SHOT-DOC Monday - Friday  
8:00 AM to 4:00 PM  
[customerservice@doalloutdoors.com](mailto:customerservice@doalloutdoors.com)  
Nashville, Tennessee, USA

Find tech tips, instructions, troubleshooting videos,  
and more online at [doalloutdoors.com](http://doalloutdoors.com)





1-866-SHOT-DOC

(1-866-746-8362)

DOALLOUTDOORS.COM

CUSTOMERSERVICE@DOALLOUTDOORS.COM



[facebook.com/doalloutdoors](https://facebook.com/doalloutdoors)



[tiktok.com/@doalloutdoors](https://tiktok.com/@doalloutdoors)



[youtube.com/doalloutdoors](https://youtube.com/doalloutdoors)



[instagram.com/doalloutdoors](https://instagram.com/doalloutdoors)