



FLYWAY 180X

INCLUDED PARTS



Clay Stack Turret Assembly with (12) male/female stacker poles, (12) female/female stacker poles, and (24) bolts (these come fastened to the poles).



Main Spring and Spadebolt



(4) 17mm Hex Bolts & (4) Plastic Washers to connect Trap Head to Trap Head Base



Trap Head Base with (4) Short 14mm Hex Bolts with (8) Washers and (4) Nuts to connect Base to the top of Wobbler



Safety Ring



Corded Foot Pedal



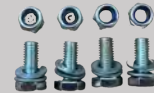
Wireless Remote



Ground Stake

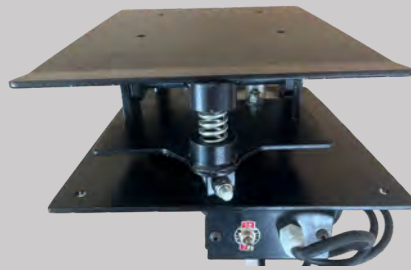


Cart Handle Assembly
With (2) Long & (1) Medium 14mm Hex Bolts with (6) Washers and (3) Nuts



(4) Short 14mm Hex Bolts, (8) washers and (4) nuts to connect Wobbler to Wobbler Base

Wobbler Base with (2) Long 14mm Hex Bolts and (2) Short 14mm Hex Bolts with (8) Washers and (4) Nuts to connect Wobbler Base to Cart and Axle Assembly



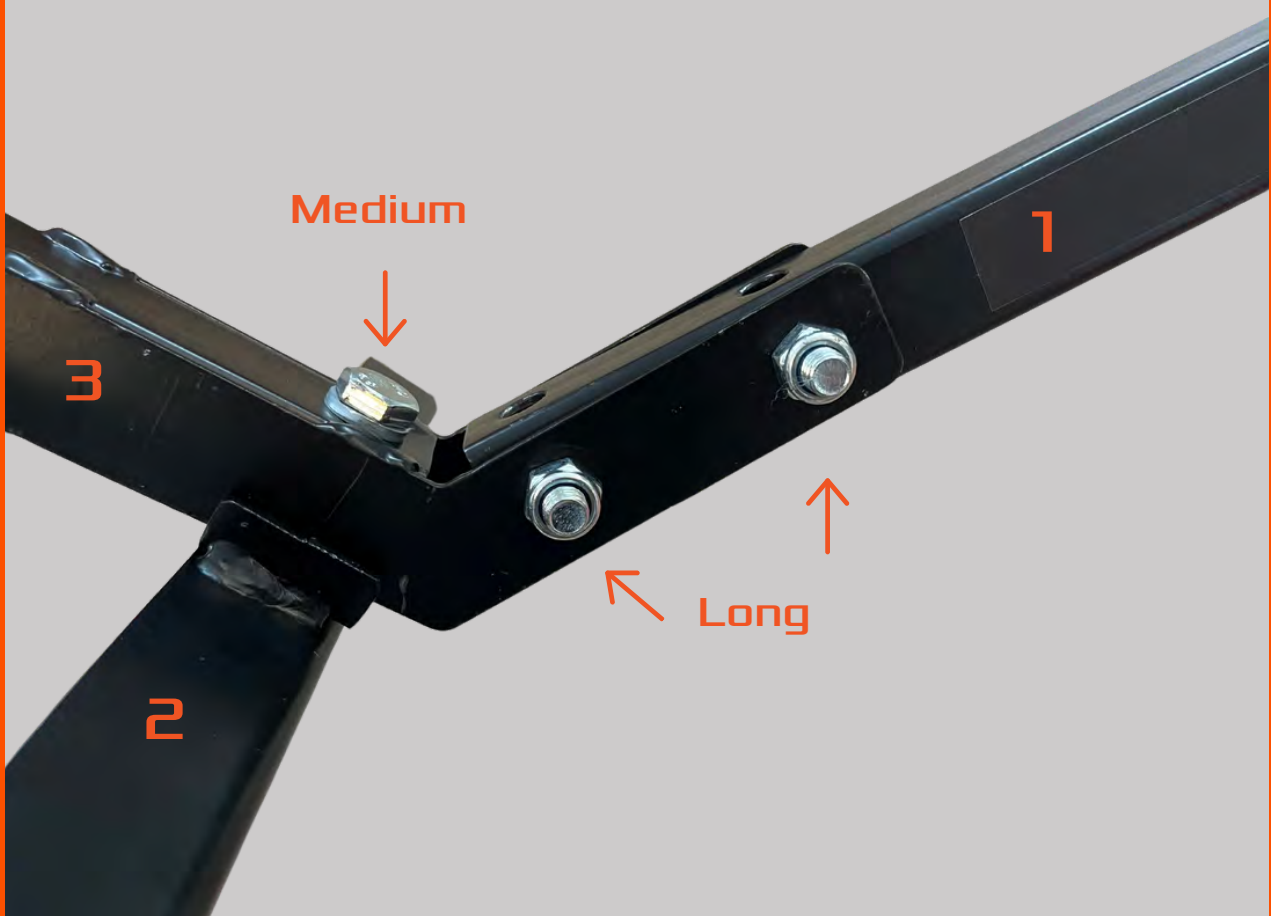
Wobbler



Axle and (2) Wheels with (4) Washers and (2) "C" Clips

TOOLS NOT INCLUDED

NOTES

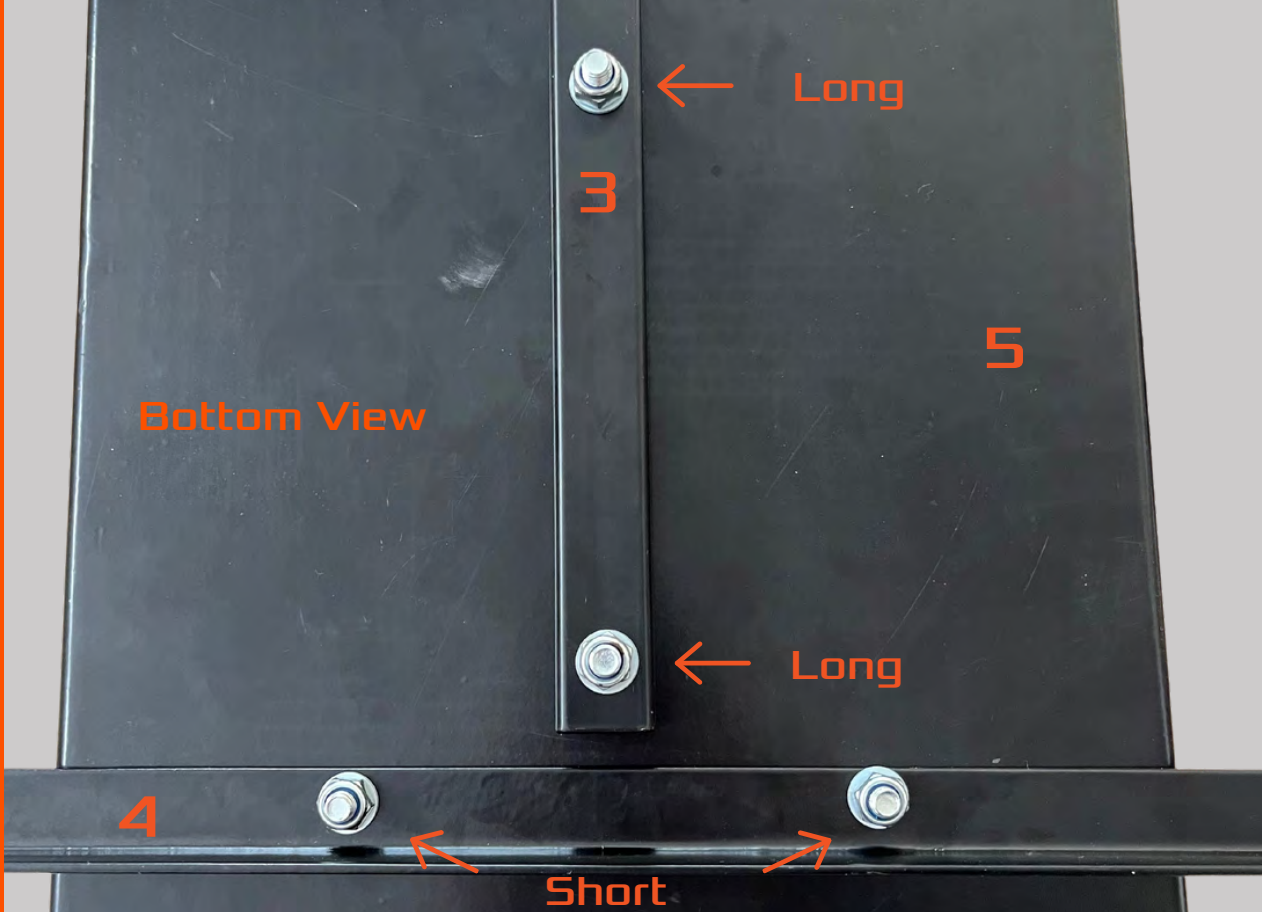


STEP 1



Prior to assembly, please be sure that all zip ties, cardboard, styrofoam, and bubble wrap are removed from the unit.

Using a 14MM socket for the bolts and a 13MM for the nuts, assemble the cart handle using the 2 long and 1 medium length bolts. (In order: Bolt, Washer, Cart Assembly, Washer, secure with Nut)



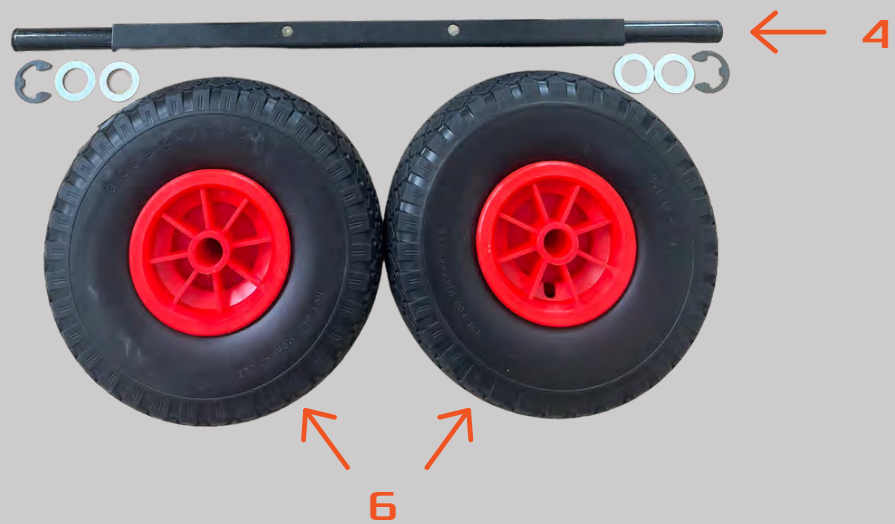
STEP 2



Using a 14MM socket for the bolts and 13MM for the nuts, attach the Wobbler base to the Axle and Cart Handle using the 2 long and 2 short length 14mm bolts. (In order: Bolt, washer, Wobbler Base, axle/cart handle, washer, and secure with nut.)



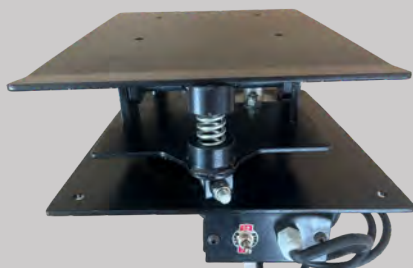
STEP 3



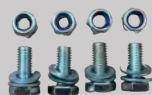
Slide a Washer, then a Wheel, then another Washer onto one side of the axle, Secure with a "C" clip. Repeat this for the second side.



STEP 5



↑
7



↑
5

Using a 14MM Socket for the Bolts and a 13MM for the Nuts, secure the Wobbler to the Wobbler base using the (4) provided bolts, 1 Bolt, 2 Washers, 1 Nut on each corner.
(In order: Bolt, Washer, Wobbler, Wobbler Base, Washer, secure with Nut)

Front side



Rear side

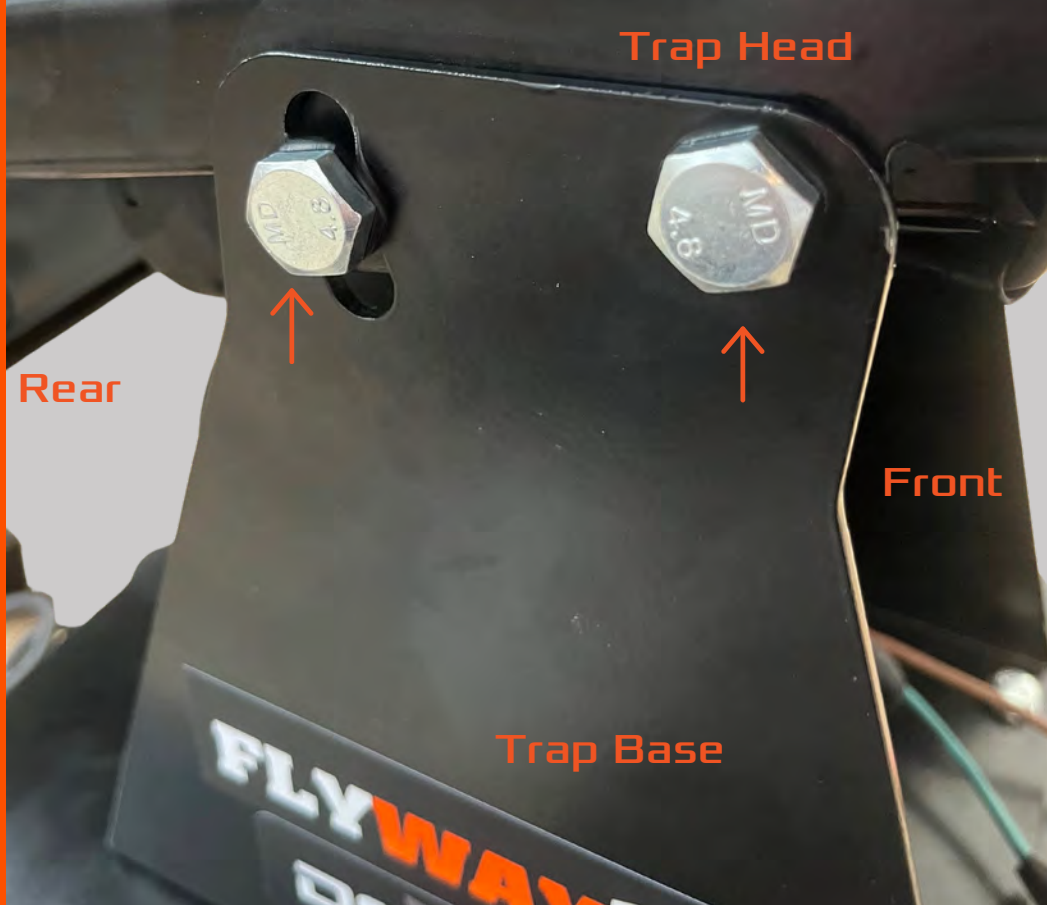
STEP 6



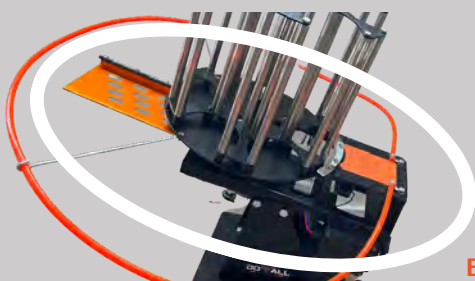
This side towards rear of trap

Using a 14MM Socket for the Bolts and a 13MM for the Nuts, secure the Trap Base to the top of the Wobbler using the (4) provided bolts, 1 Bolt, 2 Washers, 1 Nut on each corner.

(In order: Bolt, Washer, Trap Base, top of Wobbler, Washer, secure with Nut underneath)



STEP 7



9

(Circled in white, stacker poles and safety ring not yet installed)



Bolts and Plastic Washers



8

Using a 17MM Socket for the Bolts and a 13MM for the Nuts, secure the Trap Head (9) to the Trap Base (8) using the (4) provided bolts and (4) plastic Washers.

(In order: Bolt, Trap Base, Plastic Washer, then into the threads on the Trap Head)

Note: This step may take 2 people as the Trap Head is fairly heavy.



Figure 1



Figure 2

STEP 8



10



11

Hook the Safety Ring onto the Safety Ring Arms (top of Figure 1), then secure to the rear of the Trap Head by loosening the two bolts (bottom of Figure 1) slightly, then push the ends of the ring under the clamps and resecure the 2 bolts.

Thread in each of the Stacker Poles to the top of the Trap Head (Figure 1), then, using the (24) supplied bolts, secure the Top piece of the Turret Assembly to the top of the Stacker Poles. (Figure 2)



Figure 1



Figure 2

STEP 9



12

Hook the Main Spring under the Trap Head Pivot. (Figure 1)

Push the Spade Bolt through the hole in the rear of the Trap, then secure with the provided tension knob until you feel tension on the spring. (Figure 2)



THANK YOU

ONCE THE MAIN SPRING IS INSTALLED, THE TRAP IS NOW LIVE AND CAN GO OFF IF LEFT IN THE COCKED POSITION. PLEASE USE EXTREME CAUTION AND ALWAYS REMOVE SPRING WHEN TRANSPORTING, ADJUSTING, OR STORING THE TRAP.

Warranty & Customer Service

Register your product online at www.doalloutdoors.com. Receipt is required for warranty registration. ONE YEAR PARTS WARRANTY.

DO-ALL OUTDOORS LLC
1(866)SHOT-DOC Monday - Friday
8:00 AM to 4:00 PM
customerservice@doalloutdoors.com
Nashville, Tennessee, USA

Find tech tips, instructions, troubleshooting videos,
and more online at doalloutdoors.com

Operation

1. Make sure deep cycle battery (not included) is fully charged. Before clamping wobbler and trap alligator clips to battery, make sure the toggle switch on the trap is set to off. ****NEVER CARRY TRAP BY THROWING ARM - THIS CAN BEND AND AFFECT PERFORMANCE!**
2. Connect foot pedal to the corded 3 prong plug coming out of the trap. ****NEVER PLUG THIS INTO A WALL.**
3. Connect red alligator clips to the positive battery post and the black alligator clips to the negative battery post.
4. Flip the toggle switch on the trap up to "disarm." Once arm moves to 12 o'clock position, turn the machine back off and load **STANDARD SIZE CLAYS ONLY** into the stacker tube assembly. Once the trap is loaded, you can flip the toggle switch down to "on." The arm will rotate counter-clockwise and automatically load a clay onto the throwing arm. **THE TRAP IS NOW COCKED. PLEASE USE EXTREME CAUTION.**
5. To turn the wobbler on, flip the switch to on. The wobbler will begin moving the trap head side to side until it is manually turned off.
6. **ALWAYS** set trap up pointing away from bystanders, trees, and animals with a recommended 400 meter open field/shot fall zone. Always look over the trap for damage and test throw a few clay pigeons before use to make sure the trap is operating properly. **NEVER ADJUST TRAP WHEN COCKED AND IN FIRING POSITION!!!**
7. With the shooter/bystanders standing to the left or behind the trap, press the foot pedal to throw the clay!
8. When you are done shooting, switch the toggle switch to disarm, hold the foot pedal down until the throwing arm reaches 12 o'clock, and turn the toggle switch to off. The trap is now safe to unload/move.

NOTES

Troubleshooting

*****ALWAYS REMOVE MAIN SPRING PRIOR TO TROUBLESHOOTING*****

MACHINE NOT TURNING ON

1. CHECK BATTERY CONNECTION. THE MACHINE DRAWS 16 AMPS TO WORK PROPERLY. WE RECOMMEND A DEEP CYCLE BATTERY WITH A MINIMUM OF 675 COLD CRANKING AMPS.
2. CHECK THE 15A AUTOMOTIVE BLADE FUSE IN THE REAR OF THE TRAP HEAD. REMOVE THE COVER AND PULL THE FUSE OUT TO INSPECT. REPLACE AS NEEDED.
3. CHECK RELAY. PLEASE EMAIL OR CALL CUSTOMER SERVICE IF ISSUES CONTINUE.

AUTO FIRING/NOT FIRING

1. IF THE TRAP CONTINUES TO FIRE, UNPLUG THE FOOT PEDAL. IF IT STOPS, THE SCREWS ON THE FOOT PEDAL NEED TO BE LOOSENED TO DEPRESS THE PEDAL DURING OPERATION.
2. IF FOOT PEDAL ISSUES CONTINUE, PLEASE SEE OUR TROUBLESHOOTING PAGE ON OUR WEBSITE FOR TESTING YOUR FOOT PEDAL.
3. ONCE YOU HAVE ESTABLISHED YOUR FOOT PEDAL IS NOT THE ISSUE, MOVE ON TO THE LIMIT SWITCH. IF YOUR TRAP CONTINUES TO AUTO FIRE, USE A 2.5MM ALLEN WRENCH TO LOOSEN THE ALLEN SCREW AND ADJUST THE LIMIT SWITCH UP SO THE ARM WILL TRIGGER THE LIMIT SWITCH EARLIER TO STOP THE ARM FROM CONTINUOUS FIRING
4. IF THE TRAP WILL NOT FIRE AND COINCIDES WITH THE LIMIT SWITCH, THIS MEANS THE ARM IS STOPPING TOO SOON. THE LIMIT SWITCH NEEDS TO BE ADJUSTED DOWN AND THEN RECHECKED TO ENSURE PROPER FIRING
5. A GOOD RULE OF THUMB FOR ARM PLACEMENT WHEN LOADED IS TO MAKE SURE THE CLAY LOADS BETWEEN 1/2 AND 1 INCH FROM THE RUBBER STRIP. IF IT'S FARTHER, THE ARM IS STOPPING TOO SOON.

BREAKING CLAY PIGEONS

1. MAKE SURE THE TURRET ASSEMBLY IS INSTALLED CORRECTLY AND ALL BOLTS AND POLES ARE SECURELY TIGHTENED.
2. IF TRAP IS "JUMPING" AROUND WHEN THE ARM SWINGS, THIS COULD BREAK CLAYS IN THE STACK OR WHILE LOADING ONTO ARM. THE TRAP SHOULD BE SECURED USING STAKES (NOT INCLUDED) OR BY MOUNTING TO A BOARD OR PIECE OF PLYWOOD FOR STABILITY.
3. SOMETIMES WHEN THE STACK IS DOWN TO A FEW CLAYS, THE MOTION OF THE TRAP CAN THROW THE CLAY PIGEONS AROUND AND THEY BREAK. ONCE YOU GET DOWN TO 2-3 CLAYS LEFT, ADD MORE TO WEIGH DOWN THE STACK AND CONTINUE SHOOTING!
4. CHECK TO SEE WHERE THE BASE OF FEEDER BRUSHES ARE TO THE TOP OF THE CLAY ARM. THE MOUNTING HARDWARE SHOULD NEVER TOUCH THE TOP OF THE BIRD. IF THIS IS HAPPENING, THE ARM OR CHASSIS IS BENT



1-866-SHOT-DOC

(1-866-746-8362)

DOALLOUTDOORS.COM

CUSTOMERSERVICE@DOALLOUTDOORS.COM



facebook.com/doalloutdoors



tiktok.com/@doalloutdoors



youtube.com/doalloutdoors



instagram.com/doalloutdoors