

AS8177



AIR STRIKE PELLET TRAP

Model: AS8177
Instruction Manual



Rated for 800 fps at a minimum of 10 yards & 1100 fps at a minimum of 30 yards.

DO-ALL TRAPS, LLC DOES NOT ACCEPT ANY RESPONSIBILITY FOR DAMAGES AND/OR INJURY SUSTAINED FROM THE USE OR MISUSE OF THIS PRODUCT.

WARRANTY & CUSTOMER SERVICE

Register your product online at www.doaloutdoors.com or call customer service at 1(866)SHOT-DOC. Receipt is required for warranty registration. ONE YEAR PARTS GUARANTY.

1(866)SHOT-DOC

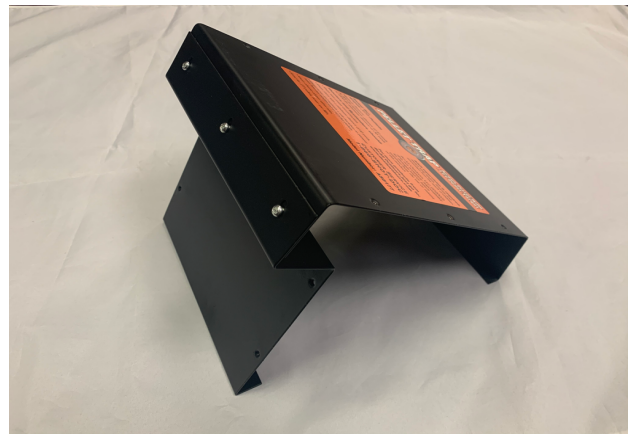
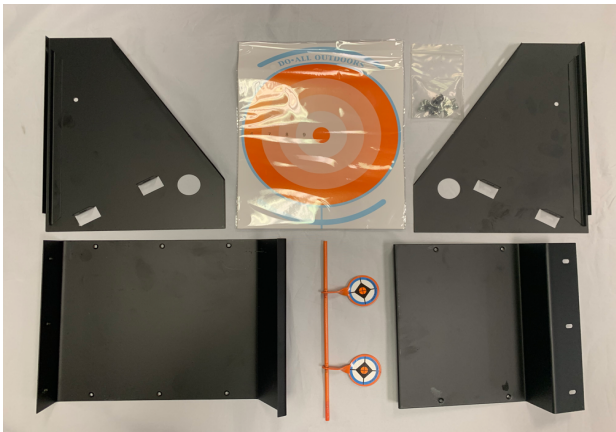
customerservice@doaloutdoors.com

Monday - Friday 8:00 AM to 4:00 PM

DO-ALL OUTDOORS, LLC. NASHVILLE, TN - U.S.A.

**WARNING: TO AVOID SERIOUS INJURY, PLEASE READ
AND FOLLOW ALL INSTRUCTIONS PRIOR TO USE**





1. Carefully take all parts out of the box and begin with assembling the back base to the bottom base with three phillips screws. not fully tighten the screws until the end.



2. Attach the first side wall using three phillips screws through the back then two through the bottom of base into the tabs on side wall. Make sure the tabs go underneath the base. Do not fully tighten screws until the end.



3. Repeat step two with the remaining side wall. Once this is complete, you can now tighten all the screws. Then, insert the spi targets one end at a time through the holes as shown in the picture. Place stopper over the end of both sides. Shoot at either spinning targets inside or insert the provided paper targets in the slot in front of the box.

PELLET TARGET RATED FOR: 10 YARDS MINIMUM DISTANCE FOR 800 FPS, 30 YARDS MINIMUM DISTANCE FOR 1100 FPS. **FOR STEEL PELLETS ONLY! DO NOT USE BB'S** . ALWAYS WEAR PROPER EAR AND EYE PROTECTION. ALWAYS KNOW WHAT IS BEYOND YOUR TARGET AND BE SURE TO MAINTAIN THE PROPER BACKDROP WHEN SHOOTING TO PREVENT INJURY FROM MISDIRECTED OR RICOCHET PROJECTILES. ADULT SUPERVISION REQUIRED FOR CHILDREN UNDER 18 YEARS OLD.