

LADY OF THE WOODS

Creative Paradise Inc.



Example 1

Materials:

- [DT32 Lady of the Woods](#)
- [GMI32 XL Sushi](#)
(Optional for Slumping)
- COE96 Glass (See Right)
- Suitable Glass Separator/ZYP
- Frit Placement Tools
- Kiln Shelf Posts

Begin by treating the mold thoroughly with suitable glass separator, making sure to cover all the details. We recommend using spray-on ZYP. **Make sure to always wear a mask when applying spray-on separator or using powder frits.**

Suggested Glass:

- FI Powder Frits:
 - Bronze
 - Teal Green
 - Pale Purple
 - F2 Fine Frits:
 - Hunter Green
 - Medium Amber
 - Olive Green
 - Pale Purple
 - Sheet Glass:
 - 12" x 12" Sour Apple
 - 12" x 12" Standard Clear
- OR**
- 12" x 12" Ming Green
 - 12" x 12" Clear Iridescent



Image 1

Once the separator has dried, begin by adding FI Bronze around the edges of the face and lightly into the facial features themselves.



Image 2

Add FI Teal Green along the outsides and veins of each leaf.



Image 3

To get the frit into the leaf veins you can press it down gently with a clean finger. Take care not to remove or disturb any separator as you do.



Image 4

Place FI Pale Purple into the deep areas of the flowers.

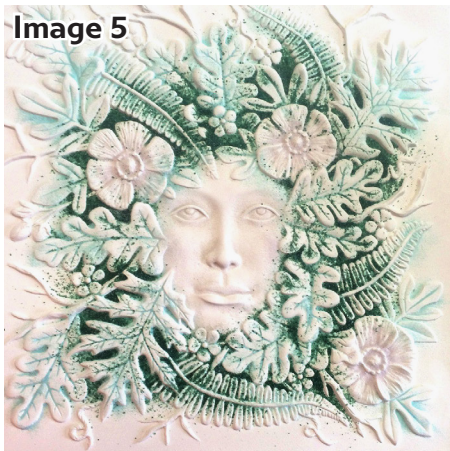


Image 5

Sprinkle F2 Hunter Green into the shadowed areas between the leaves and flowers near the face.

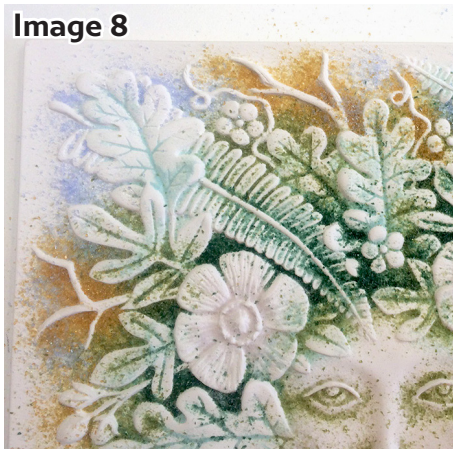


Image 6

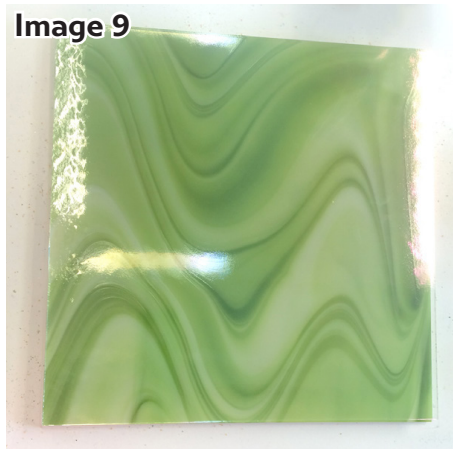
Add F2 Olive Green into the spaces between the plants outside the Hunter Green area and blend together. Add a light sprinkling of F2 Olive Green into the facial features.



Sprinkle F2 Medium Amber around each twig and tendril and add a bit more F2 Hunter Green under the foliage at the bottom edge of the scene.



Place F2 Pale Blue into some of the "sky" areas along the top of the scene and add a bit of F2 Pale Purple into the flowers.



For an opaque Lady such as in **Example 1** on **Page 1**, center a 12" square of Sour Apple onto the filled mold with the stronger swirl pattern facing away from the mold. Cover with a 12" square of Standard Clear.



For an iridescent and transparent Lady such as **Example 2** below, center a 12" square of Iridized Clear on the filled mold with the irid coating facing the texture. Top the Irid with a 12" square of Ming Green.



Place the filled mold onto kiln posts on a level shelf in the kiln. Orient each post so the majority is outside the mold and fire using the suggested schedule in **Table 1** or your own preferred Full Fuse.

Table 1: Full Fuse*

Seg.	Rate	Temp (°F)	Hold
1	200	1215	45
2	50	1250	30
3	250	1330	10
4	300	1465	10
5	9999	950**	90
6	100	500	05

**If using COE90, adjust this to 900°F

Table 2: Slump*

Seg.	Rate	Temp (°F)	Hold
1	200	1215	45
2	50	1250	30
3	9999	950**	90
4	100	500	05

**If using COE90, adjust this to 900°F

*Before firing, it's important to know your kiln. For tips on how to do that, [please click here to see our Important Firing Notes!](#)



Example 2

To slump into a piece like **Example 2**, center the textured glass on the prepared GMI32. Transfer to a level shelf in the kiln and fire using the suggested schedule in **Table 2** or your own favorite Slumping schedule.

Example 3 features the same example shown in **Image 11**, only viewed from the textured side with light projected through the back.



Example 3