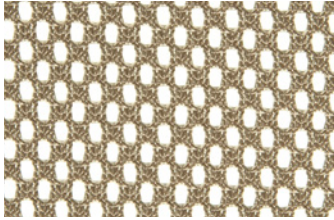
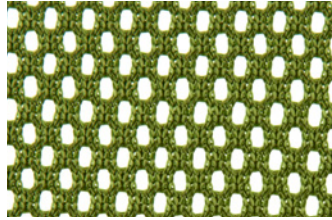


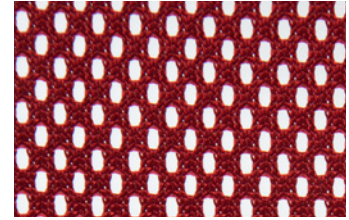
# MESH | M7 M8



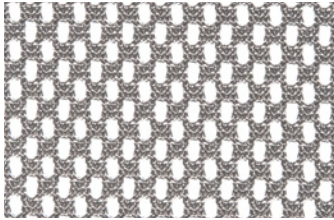
M7 Sandstone



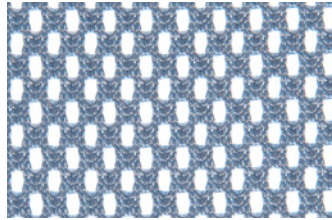
Green Apple



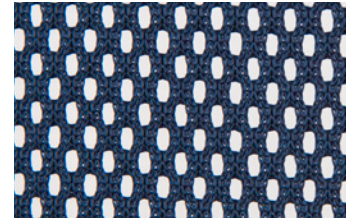
Flare



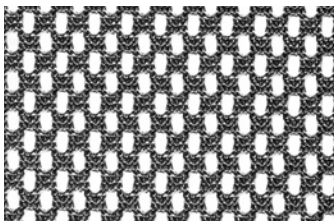
Silver



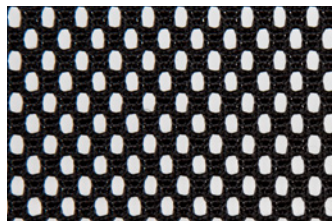
Sky Blue



Navy



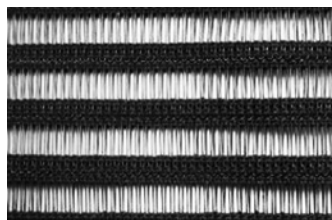
Grey



Black



M8 Sheer Latitude



Horizontal

## Technical Information

Width/ Pattern	Applicable Chairs	Fiber Content & Backing	Weight	Protective Finish	Abrasion Resistance	Light- fastness	Approx. Repeats	Cl. Code
M7 60"    	Inertia	100% Polyester	N/A	N/A	100,000 Martindale	N/A	Full Repeat Shown	N/A
M8 Sheer Latitude	Zip	63% Polyester yarns, 37% Spandex	240 g / 1 m	N/A	18,000 cycles	Level 6	Full Repeat Shown	N/A
M8 Horizontal	Zip	68% Polyester yarns, 32% Spandex	240 g / 1 m	N/A	18,000 cycles	Level 6	Full Repeat Shown	N/A

### EXPLANATION OF ACT ICONS FOR UPHOLSTERY

#### Fire Retardancy

Flammability testing determined as fabric's resistance to burning.

#### Colorfastness to Wet and Dry Crocking

Colorfastness to wet & dry crocking refers to the rubbing off of color from the fabric onto clothing, hands or other materials and can occur under wet or dry conditions.

#### Colorfastness to Light

Colorfastness to light is the degree to which fabric will retain its color when exposed to light.

#### Physical Properties

3 physical property tests include: brush pill test to determine a fabric's pilling. Breaking/tensile strength is the ability of a fabric to withstand tension without breaking or tearing. Seam slippage is the pulling apart of fabrics at the seams.

#### Abrasion

Abrasion is the ability of a fabric to withstand damage from wear and rubbing. There is a general contract specification as well as heavy duty specification.

#### TORONTO

5800 Avebury Road, Unit 2  
Mississauga, ON L5R 3M3

SKU BF9839

#### CHICAGO\*

325 North Wells Street, Suite 210  
Chicago, IL 60654

Printed in Canada 04/2017

#### NEW YORK\*

1140 Broadway, Suite 307  
New York, NY 10001

\*By appointment only

#### TO VIEW OUR ENTIRE MESH

COLLECTION, VISIT [ALLSEATING.COM](http://ALLSEATING.COM)

† 1 800 563 3502 ‡ 1 800 272 9911