

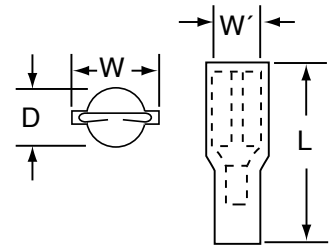


# Data Sheet

# 3M Specialty Terminals

TFSN3-R110

Female Disconnect, Nylon Fully Insulated,  
Butted Seam



Product Number	Wire Range (AWG)	Male Tab Width (W') x Thickness	L	W	D	Barrel Length	Barrel I.D.	Maximum Insulation Diameter
TFSN3-R110	26-20	0.110 x 0.020 0.125 x 0.020	0.66	0.22	0.15	0.13	0.055	0.093

## Specifications

Wire Size:	26-20 AWG Copper
Barrel Seam:	Butted
Maximum Operating Temp:	221°F (105°C)
Maximum Current:	Same as Wire
Insulator Material:	Nylon
Terminal Material:	Brass
Plating:	Tin

## Engineering Specification

Crimp-Type Female Disconnects shall, electrically and mechanically, connect permanently to a prestripped end of a stranded copper wire, and have a tongue portion with fingers which grip a Male Quick-Slide and a tongue extension to be gripped by a Female Quick-Slide, in a separable, reusable manner, thus forming a Quick Connect Wiring Termination.

The miniature connector line shall offer tongue variations (sized to grip Male Tabs: 0.110" x 0.020" or 0.125" x 0.020") and barrel variations in construction, nylon fully insulated, nylon fully insulated with insulation grip, etc. The tongue portion shall be marked with the wire range and manufacturer's symbol (↑).

The Nylon Fully Insulated Miniature 0.110" Female Disconnect shall be tin plated 0.010" thick brass, with a tongue for gripping a 0.020" Male Tab of either 0.110" or 0.125" width x 0.020" thick and a 0.13" long butted seam barrel covered by a molded nylon sleeve which extends to cover the tongue, color coded and sized for a specified (AWG) wire range (26-20).

## Installation Information

### ⚠ WARNING

Turn power off before installing or removing terminal. All electrical work should be done according to appropriate electrical codes.

For use on stranded copper (AWG) wire only.

Strip away the end 3/8 inch of wire insulation.

Make the crimp in the proper station of a recommended 3M crimp tool: TH-450 (scissor style) hand tools.



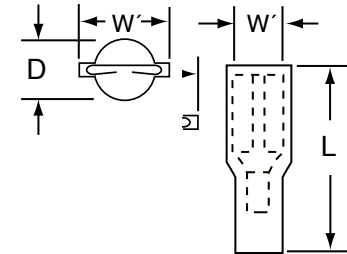
Barrel Crimp (Electrical)



# Data Sheet

## 3M Specialty Terminals

TFSN3-R187, TFSN3-B187  
 Female Disconnect, Nylon Fully Insulated,  
 Butted Seam



Product Number	Wire Range (AWG)	Mates with Male Tab Width (W') x Thickness	L	W	D	Barrel Length	Barrel I.D.	Maximum Insulation Diameter
TFSN3-R187	22-18	0.187 x 0.020	0.81	0.30	0.23	0.25	0.085	0.145
TFSN3-B187	16-14	0.187 x 0.020	0.81	0.30	0.23	0.25	0.085	0.145

### Specifications

Wire Size: See Table Above  
 Barrel Seam: Butted  
 Insulator Max. Volt Rating: 600 V Building Wire  
 1000 V Signs or Fixtures (Luminaires)  
 Maximum Operating Temp: 221°F (105°C)  
 Maximum Current: Same as Wire  
 Insulator Material: Nylon  
 Terminal Material: Brass  
 Plating: Tin

### Engineering Specification

Crimp-Type Female Disconnects shall, electrically and mechanically, connect permanently to the prestripped end of a stranded copper wire, and have a tongue portion with fingers which grip a Male Quick Slide in a separable, reusable manner, forming a Quick Connect Wiring Termination.

The connector line shall offer a tongue variations (sized to grip male tabs: 0.250" x 0.032" or 0.187" x 0.020" per ANSI/NEMA CD-2) and barrel variations in wire (AWG) size (22-18, 16-14, 12-10) and construction, non-insulated, vinyl insulated, nylon fully, etc. The Female Disconnects shall have regulatory agency coverage, UL Listing, CSA Certification. The tongue portion shall be marked with the wire range and manufacturer's symbol (↑).

The Nylon Fully Insulated 0.187" Female Disconnect shall be tin plated 0.016" thick brass, with a tongue for gripping a 0.187" x 0.020" Male Tab, per ANSI/NEMA CD-2 and a 0.250" long barrel covered by a molded nylon funnel entry sleeve, which extends to cover the tongue, color coded and sized for a specified (AWG) wire range (Red, 22-18: Blue, 16-14).

### Installation Information

#### ⚠ WARNING

Turn power off before installing or removing terminal. All electrical work should be done according to appropriate electrical codes.

UL Listed and CSA Certified for use on stranded copper (AWG) wire only.

Strip away the end 3/8 inch of wire insulation.

Make the crimp in the proper station of a recommended 3M crimp tool: TH-440, TH-450 (scissor style), or TR-490 (ratchet style) hand tools.



Barrel Crimp (Electrical)

Suitable for factory installation on steel or brass tabs. UL and CSA.

Suitable for field application on brass tabs, strain relief is required. UL only.

Insulated connectors shall be UL Listed and CSA Certified for 600 V building wire; 1000V signs or fixtures (luminaires); and temperature rated 221°F (105°C) maximum.

Female Disconnects shall be suitable for field or factory wiring, with a UL Recognized strain relief required.

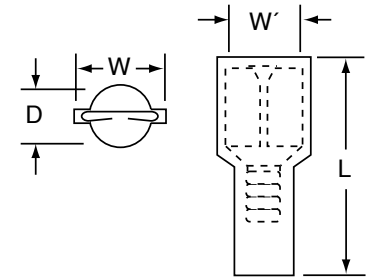


# Data Sheet

## 3M Specialty Terminals

TFSN3-R250, TFSN3-B250

Female Disconnect, Nylon Fully Insulated,  
Butted Seam



Product Number	Wire Range (AWG)	Male Tab Width (W') x Thickness	L	W	D	Barrel Length	Barrel I.D.	Maximum Insulation Diameter
TFSN3-R250	22-18	0.250 x 0.032	0.87	0.37	0.23	0.25	0.080	0.145
TFSN3-B250	16-14	0.250 x 0.032	0.87	0.37	0.23	0.25	0.080	0.145

### Specifications

Wire Size: See Table Above  
 Barrel Seam: Butted  
 Maximum Voltage Rating: 600 V Building Wire  
 1000 V signs or fixtures (Luminaires)  
 Maximum Operating Temp: 221°F (105°C)  
 Maximum Current: Same as Wire  
 Insulator Material: Nylon  
 Terminal Material: Brass  
 Plating: Tin

### Engineering Specification

Crimp-Type Female Disconnect Terminals shall, electrically and mechanically, connect permanently to a prestripped end of a stranded copper wire, and have a tongue portion with fingers which grip a Male Disconnect in a separable, reusable manner, forming a Quick Connect Wiring Termination.

The connector line shall offer tongue variations (sized to grip Male Tabs: 0.187" x 0.250") and barrel variations in construction, non-insulated, nylon insulated with insulation grip, etc. The tongue portion shall be marked with the wire range and manufacturer's symbol (↑).

The Nylon Fully Insulated 0.250" Female Disconnect shall be tin plated 0.020" thick brass with a tongue for gripping a 0.250" x 0.032" per ANSI/NEMA CD-2 and a 0.25" long barrel covered by a nylon funnel entry sleeve, which extends to cover the tongue, color coded and sized for a specified (AWG) wire range (22-18, 16-14).

### Installation Information

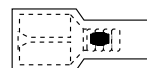
#### ⚠ WARNING

Turn power off before installing or removing terminal. All electrical work should be done according to appropriate electrical codes.

UL Listed and CSA Certified for use on stranded copper (AWG) wire only.

Strip away the end 3/8 inch of wire insulation.

Make the crimp in the proper station of a recommended 3M crimp tool: TH-440, TH-450 (scissor style), or TR-490 (ratchet style) hand tools.



● Barrel Crimp (Electrical)

Suitable for factory installation on steel or brass tabs, UL and CSA.

Suitable for field application on brass tabs, strain relief is required, UL only.

Insulated connectors shall be UL Listed and CSA Certified for 600 V building wire: 1000 V signs or lighting fixtures (luminaires) and temperature rated 221°F (105°C) maximum.

Female Disconnects shall be suitable for field or factory wiring, with a UL Recognized strain relief required



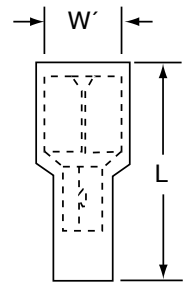
# Data Sheet

# 3M Specialty Terminals

TFSN3-Y250

Female Disconnect, Interlock Barrel,

Nylon Fully Insulated



Product Number	Wire Range (AWG)	Mates with Male Tab Width (W') x Thickness	L	Barrel Length	Barrel I.D.	Maximum Insulation Diameter
TFSN3-Y250	12-10	0.250 x 0.032	0.99	0.25	0.128	0.250

## Specifications

Wire Size: See Table Above  
 Barrel Seam: Interlock  
 Maximum Voltage Rating: 600 V Building Wire  
 1000 V Signs or Fixtures (Luminaires)  
 Maximum Operating Temp: 221°F (105°C)  
 Maximum Current: Same as Wire  
 Insulator Material: Nylon  
 Terminal Material: Brass  
 Plating: Tin

## Engineering Specification

Crimp-Type Female Disconnect shall, electrically and mechanically, connect permanently to a prestripped end of a stranded copper wire and have a tongue portion with fingers which grip a Male Disconnect in a separable, reusable manner, forming a Quick Connect Wiring Termination.

The connector line shall offer tongue variations (sized to 0.250" x 0.032" or 0.187" x 0.020" per ANSI/NEMA CD-2) and barrel variations in wire (AWG) size (22-18, 16-14, 12-10) and construction, non-insulated, vinyl insulated, nylon fully insulated, etc. The female disconnect shall have regulatory agency coverage, UL Listed, CSA Certification. The tongue portion shall be marked with the wire range and manufacturer's symbol (↑).

The Nylon Fully Insulated 0.250" Female Disconnect with interlocking barrel shall be tin plated 0.020" thick brass with a tongue for gripping a 0.250" x 0.032" Male Tab per ANSI/NEMA CD-2 and a 0.25" long barrel covered by a molded nylon sleeve, which extends to cover the tongue, color coded and sized for a specified (AWG) wire range (22-18, 16-14, 12-10).

## Installation Information

### ⚠ WARNING

Turn power off before installing or removing terminal. All electrical work should be done according to appropriate electrical codes.

UL Listed and CSA Certified for use on stranded copper (AWG) wire only.

Strip away the end 3/8 inch of wire insulation.

Make the crimp in the proper station of a recommended 3M crimp tool: TH-440, TH-450 (scissor style), or TR-490 (ratchet style) hand tools.



● Barrel Crimp (Electrical)

Suitable for factory installation on steel or brass tabs, UL and CSA.

Suitable for field application on brass tabs, strain relief is required, UL only.

Insulated connectors shall be UL Listed and CSA Certified for 600 V building wire: 1000 V signs or lighting fixtures (luminaires) and temperature rated 221°F (105°C) maximum.

Female Disconnects shall be suitable for field or factory wiring, with a UL Recognized strain relief required.



UNDERWRITERS  
LABORATORIES  
STANDARD NO. UL 486A  
3M FILE NO. E70512



CANADIAN STANDARDS  
ASSOCIATION  
STANDARD NO. 22.2  
NO. 0.65  
3M FILE NO. LR22190

3M is a trademark of 3M Company.



is a trademark of Underwriters Laboratories.



is a trademark of Canadian Standards Association.

#### IMPORTANT NOTICE

Before using this product, you must evaluate it and determine if it is suitable for your intended application. You assume all risks and liability associated with such use.

**Warranty; Limited Remedy; Limited Liability.** This product will be free from defects in material and manufacture as of the date of purchase. **3M MAKES NO OTHER WARRANTIES INCLUDING, BUT NOT LIMITED TO, ANY IMPLIED WARRANTY OF MERCHANTABILITY OR FITNESS FOR A PARTICULAR PURPOSE.** If this product is defective within the warranty period stated above, your exclusive remedy shall be, at 3M's option, to replace or repair the 3M product or refund the purchase price of the 3M product. **Except where prohibited by law, 3M will not be liable for any loss or damage arising from this 3M product, whether direct, indirect, special, incidental or consequential regardless of the legal theory asserted.**