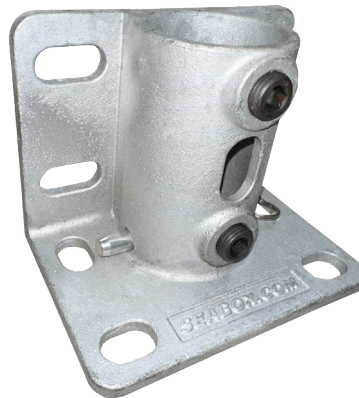
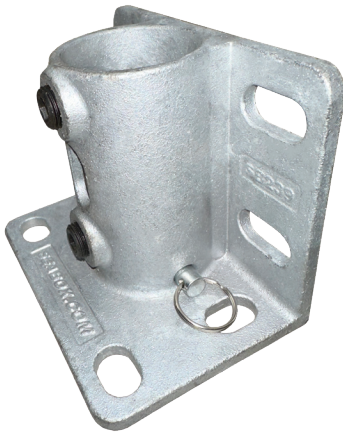
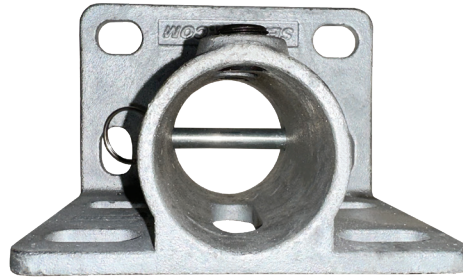
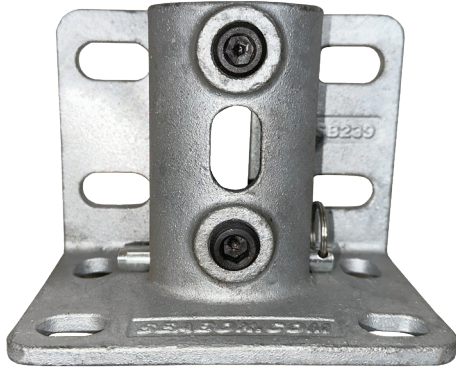




## Pole Mounting Bracket

**SB239**  
Pole Mounting Bracket



### PRODUCT SPECIFICATIONS

- Material: Cast Steel (Yield = 60KSI)
- Finish: Hot Dipped Galvanized
- Rated capacity shear 8 tons
- 3/8" dia. quick release pin included
- Pin shear rating 5,500lb
- To be used with 1 1/2 pipe (SCH 40 or 80)

- Tare weight 3.7 lbs, 1.68 kg
- (4) .560" x .26" Slot
- (4) .560" x .26" Slot

### STANDARD FEATURES

- Compatible with all ISO type containers

101323-R00

ISO 9001



CERTIFIED QUALITY  
MANAGEMENT SYSTEM

	TALL	WIDE	THICKNESS
Inches	4	5.25	3.25
Metric	101.6	133	76.2

ALL DIMENSIONS AND WEIGHTS ARE NOMINAL AND SUBJECT TO MINOR VARIATIONS THAT MAY OCCUR DURING THE MANUFACTURING PROCESS